



REVISED STARTING
SERIAL # 260210193

PARTS LIST MANUAL

CRETE-PLANE® MODEL CPM-8



GASOLINE MODEL



PROPANE MODEL



ELECTRIC MODEL

8" WALK BEHIND CRETE-PLANERS®

*SKU #	MODEL #	POWER OPTION
79300	CPM-8G	HONDA GASOLINE ENGINE MODEL GX270
72600	CPM-8P	PROPANE POWER SYSTEMS 305cc ENGINE
79500	CPM-8E	BALDOR ELECTRIC MOTOR 5HP 60Hz 1PH 230V
69600	CPM-8E	BALDOR ELECTRIC MOTOR 3HP 50Hz 1PH 220V
79400	CPM-8E	BALDOR ELECTRIC MOTOR 5HP 60Hz 3PH 230V/460V
79400-50	CPM-8E	BALDOR ELECTRIC MOTOR 5HP 50Hz 3PH 230-400V

* Add a "PCD" suffix for units with a 8" PCD Drum. The 8" Loaded Cutter Drum is standard.

**READ AND UNDERSTAND THE OPERATOR'S SAFETY MANUAL THOROUGHLY
BEFORE ATTEMPTING TO OPERATE THIS EQUIPMENT.**

Death or serious injury could occur if this machine is used improperly.

Machine specific Operator's Instruction Manuals are offered at edcoinc.com/customer-support

READ AND UNDERSTAND THE ENGINE MANUFACTURERS INSTRUCTIONS AND OPERATORS MANUAL BEFORE OPERATION.



EQUIPMENT DEVELOPMENT COMPANY, INC.

100 Thomas Johnson Drive, Frederick, MD 21702-4600 USA
Phone: 800-638-3326 or 301-663-1600 • Fax: 800-447-3326 or 301-663-1607
Website: www.edcoinc.com • E-mail: techsupport@edcoinc.com

Printed in USA
JWA © 2026

**SAFETY INFORMATION****SAFETY MESSAGES**

• Safety Instructions are preceded by a graphic alert symbol of DANGER, WARNING, or CAUTION.



Indicates an imminent hazard which, if not avoided, will result in death or serious injury.



Indicates an imminent hazard which, if not avoided, can result in death or serious injury.



Indicates hazards which, if not avoided, could result in serious injury and or damage to the equipment.

GASOLINE / PROPANE POWERED EQUIPMENT

• Engine exhaust from this product contains chemicals known to the State of California to cause cancer, birth defects or other reproductive harm.



• Tilting a gasoline powered machine fitted with an EPA approved vented charcoal filter gas cap, beyond 20° can cause fuel leakage. If a leak occurs, do not start or run the engine until the leak is fixed. Eliminate all other ignition sources in the immediate area (no smoking, flares, sparks or flames). Use approved gasoline absorbing material to contain the fuel leakage. Then use clean, non-sparking tools to collect absorbed materials then dispose of these contaminants properly.



• Gasoline is extremely flammable and poisonous. It should only be dispensed in well ventilated areas, and with a cool engine.

• Small gasoline engines produce high concentrations of carbon monoxide (CO) example: a 5 HP 4 cycle engine operation in an enclosed 100,000 cu. ft. area with only one change of air per hour is capable of providing deadly concentrations of CO in less than fifteen minutes. Five changes of air in the same area will produce noxious fumes in less than 30 minutes. Gasoline powered equipment should not be used in enclosed or partially enclosed areas. Symptoms of CO poisoning include, head-ache, nausea, weakness, dizziness, visual problems and loss of consciousness. If symptoms occur - get into fresh air and seek medical attention immediately.

- Never refuel a hot engine or an engine while it is running.
- Engines are shipped from factory without fuel/oil.



• Propane is extremely flammable and is heavier than air and tends to settle in low areas where a spark or flame could ignite gas. DO NOT start or operate this propane engine in a poorly ventilated area where leaking propane gas could accumulate and endanger safety of persons in area. If headache develops, shut off machine. Have it checked for carbon monoxide emissions by a qualified technician before using it again. To ensure personal safety, installation and repair of propane fuel supply systems must be performed only by qualified technicians. Carbon monoxide emissions from this machine are greatly increased due to a dirty combustion air cleaner.

ELECTRICAL POWERED EQUIPMENT

Extreme care must be taken when operating electric models with water present: Ensure power cord is properly grounded, is attached to a Ground-Fault-Interrupter (GFI) outlet, and is undamaged.

- Check all electrical cables - be sure connections are tight and cable is continuous and in good condition. Be sure cable is correctly rated for both the operating current and voltage of this equipment.
- Improper connection of the equipment grounding conductor can result in a risk of electric shock. Check with qualified electrician or service person if there is any doubt as to whether the outlet is properly grounded. Adhere to all local codes and ordinances.
- NOTE: In the event of a malfunction or breakdown, grounding provides a path of least resistance for the electric current to dissipate. The motor is equipped with a grounded plug and must be connected to an outlet that is properly installed and properly grounded. DO NOT modify the plug provided on the motor. If the plug does not fit the outlet have a qualified electrician install the proper receptacle.

ELECTRICAL POWERED EQUIPMENT CONTINUED

- Do not disconnect power by pulling cord. To disconnect, grasp the plug, not the cord.
- Unplug power cord at the machine when not in use and before servicing.
- Switch motor OFF before disconnecting power.
- Never use frayed, damaged, taped or under rated extension cords. Electrical shock could result in death or serious injury to the operator and damage to the equipment.
- Assure you are using the proper extension cord length.

GENERAL INSTRUCTIONS

- Equipment should only be operated by trained personnel in good physical condition and mental health (not fatigued). The operator and maintenance personnel must be physically able to handle the bulk weight and power of this equipment.
- This is a one person tool. Maintain a safe operating distance to other personnel. It is the operators' responsibility to keep other people (workers, pedestrians, bystanders, etc.) away during operation. Block off the work area in all directions with roping, safety netting, etc. Failure to do so may result in others being injured by flying debris or exposing them to harmful dust and noise.
- This equipment is intended for commercial use only.
- For the operator's safety and the safety of others, always keep all guards in place during operation.
- Never let equipment run unattended.



- Personal Protection Equipment and proper safety attire must be worn when operating this machinery. The operator must wear approved safety equipment appropriate for the job such as hard hat and safety shoes when conditions require. Hearing protection MUST be used when operational noise levels of this equipment may exceed 85db. Eye protection MUST be worn at all times.



Keep body parts, loose clothing and accessories away from moving parts. Failure to do so could result in dismemberment or death.

- Do not modify the machine.
- Stop motor/engine when adjusting or servicing this equipment. Maintain a safe operating distance from flammable materials. Sparks from the cutting-action of this machine can ignite flammable materials or vapors.

**DUST WARNING**

Some dust created by power sanding, sawing, grinding, drilling, and other construction activities contains chemicals known to cause cancer, birth defects, or other reproductive harm. Materials being removed can be toxic or hazardous. A breathing respirator is required to help protect the operator. Some examples of these chemicals are:

- Lead from lead-based paints.
- Crystalline silica from bricks, concrete and other masonry products. Your risk of exposure to these chemicals varies depending on how often you do this type of work. To reduce your risk: work in a well ventilated area, use a dust control system, such as an industrial-style vacuum, and wear approved personal safety equipment, such as a dust/particle respirator designed to filter out microscopic particles.
- See more on the importance of dust prevention and silica warnings at: osha.gov/silica
- More concrete and silica dust suppression training and educational materials available at edcoinc.com/silica-standards or scan the QR code on page 5.
- Written exposure plans are provided at <http://www.edcoinc.com/written-exposure-control-plans/>



PARTS LIST MANUAL

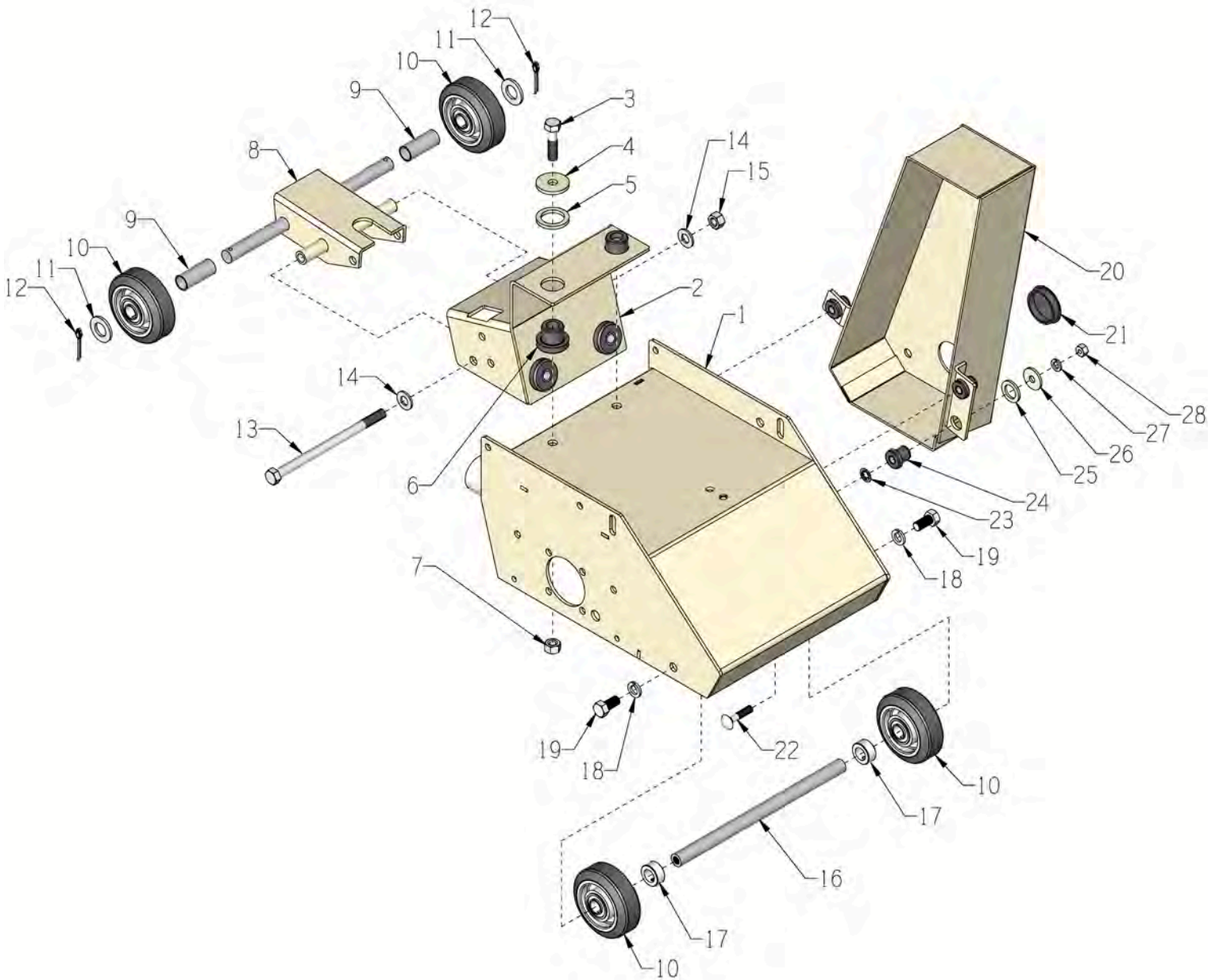
MODEL CPM-8

8" WALK BEHIND CRETE-PLANER®

TABLE OF CONTENTS

<u>Section</u>	<u>Page Number</u>
Safety Information	2
Illustration 1: Main Grouping	4, 5
Illustration 2: Rubber Seal Grouping	6
Illustration 3: Engine/Motor Mount Grouping	7
Illustration 4: Handle Bar Grouping	8, 9
Illustration 5: Depth Control Grouping	10, 11
Illustration 6: Drum, Shaft & Bearing Grouping	12
Illustration 7: Cutter Drum Assembly (Standard - 8" Width)	13
Illustration 8: Optional Edger Assembly	14
Illustration 9: Optional Edger Cutter Drum Assembly (4" Width)	15
Illustration 10: 8" PCD Flat Tooth Drum Assembly	16
Illustration 11: 4" PCD Flat Tooth Drum Assembly	17
Illustration 12: Optional Diamond Grooving Head Assembly	18
Diamond Grooving Head Set-Ups	19, 20, 21
Illustration 13: Optional Water System Kit	22
Illustration 14: Optional Lifting Bail Assembly	23
Illustration 15: Gasoline Engine Grouping	24, 25
Wiring Diagram for Honda Engine	27
Illustration 16: Propane Engine Grouping	28, 29
Illustration 17: Propane Engine & Fuel Conversion Kit	30, 31
Illustration 18: Propane Tank Deck Grouping	32, 33
Illustration 19: Propane Tank Grouping	34, 35
Illustration 20: Single Phase Motor Grouping	36, 37
Wiring Diagram for Rotary Cam Switch	38
Wiring Diagram for 60Hz 1-Phase Motor	39
Illustration 21: 1-Phase 50Hz Motor Grouping	40, 41
Wiring Diagram for Starter & Remote Switch	42
Wiring Diagram for 3HP1-Phase 50Hz Motor	43
Illustration 22: 5HP 3-Phase Motor Grouping	44, 45
Illustration 23: Switch Assembly	46
Illustration 24: Advanced Controls, Inc. (aci) Brand Reset Starter Assembly	47
Wiring Diagram for Starter & Remote Switch	48
Wiring Diagram for 60Hz 3-Phase Motor	49
Wiring Diagram for 50Hz 3-Phase Motor	50
Decal Sheet	52
Decals Continued	53
Limited Equipment Warranty of Sale	55
EDCO's Online Customer Support	56

ILLUSTRATION 1: MAIN GROUPING



PARTS LISTING

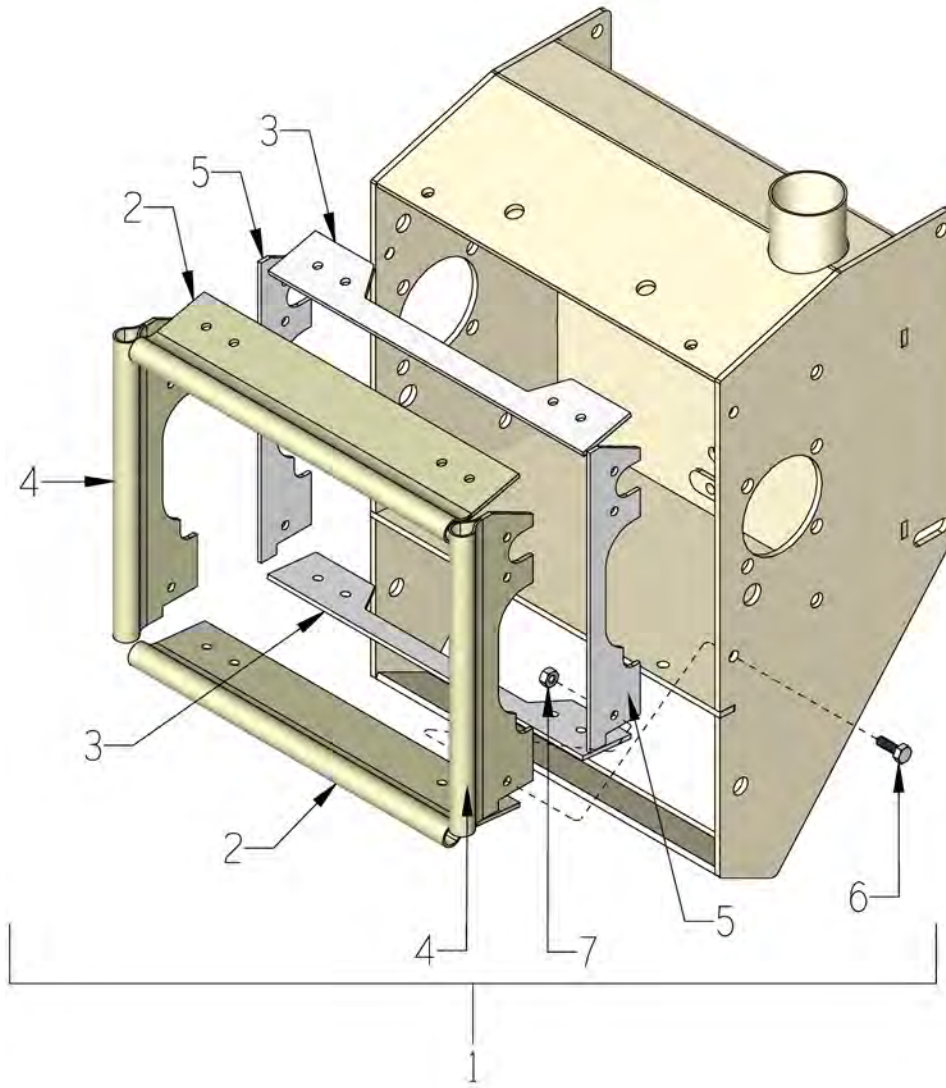
ILLUSTRATION 1: MAIN GROUPING

ITEM #	PART #	DESCRIPTION	QTY.
1	65113	MAIN FRAME, CPM-8 HAV	1
2	65114	DECK WELDMENT, REAR, CPM-8 HAV	1
3	10322	SCREW, CAP 1/2-20 X 2 ZINC	4
4	65117	WASHER 17/32 X 1-3/4 X 3/16	4
5	65118	WASHER 1-1/4 X 1-3/4 X 3/16	4
6	65116	MOUNT, CENTER BONDED, CB-1121-2	4
7	10205	NUT, HEX LOCK 1/2-20 ZINC	4
8	65004	FORK, CPM-8	1
9	65005	SPACER, REAR WHEEL, 2-1/8", CPL/M-8	2
10	52001	WHEEL 4 X 1-1/2 X 3/4"BRG. ALUM/RUB	4
11*	11597 10009	WASHER .755"ID X 1.25"OD X .060"THK WASHER, FLAT 3/4 SAE ZINC .134"THK	2*
12	10306	PIN, COTTER 3/16 X 1-1/2	2
13	65015	SCREW, CAP 1/2-13 X 8 ZINC	1
14	10312	WASHER, FLAT 1/2 SAE ZINC	2
15	10407	NUT, HEX LOCK 1/2-13 ZINC	1
16	65014	AXLE SHAFT 3/4"DIA. X 12-3/16"L	1
17	10428	COLLAR, LOCKING 3/4"ID	2
18	10045	WASHER, LOCK 1/2 ZINC	2
19	10304	SCREW, CAP 1/2-20 X 1 ZINC	2
20	65115	COVER, BELT, CPM-8 HAV	1
21	65022	PLUG, HOLE 2"	1
22	10087	BOLT, CARRIAGE 3/8-16 X 1-3/4	3
23	10468	RETAINER, 3/8" BOLT PUSH NUT	3
24	72007	MOUNT, CENTER BONDED, CB-1120-1	3
25	65119	WASHER 13/16 X 1-1/4 X 1/8	3
26	72006	WASHER, 1-1/4OD X 13/32ID X 1/8THK	3
27	10811	WASHER, LOCK 3/8 ZINC	3
28	10404	NUT, HEX 3/8-16 ZINC	3

*NOTE: ITEM 11 MAY VARY. USE AS REQUIRED FOR EACH REAR WHEEL.

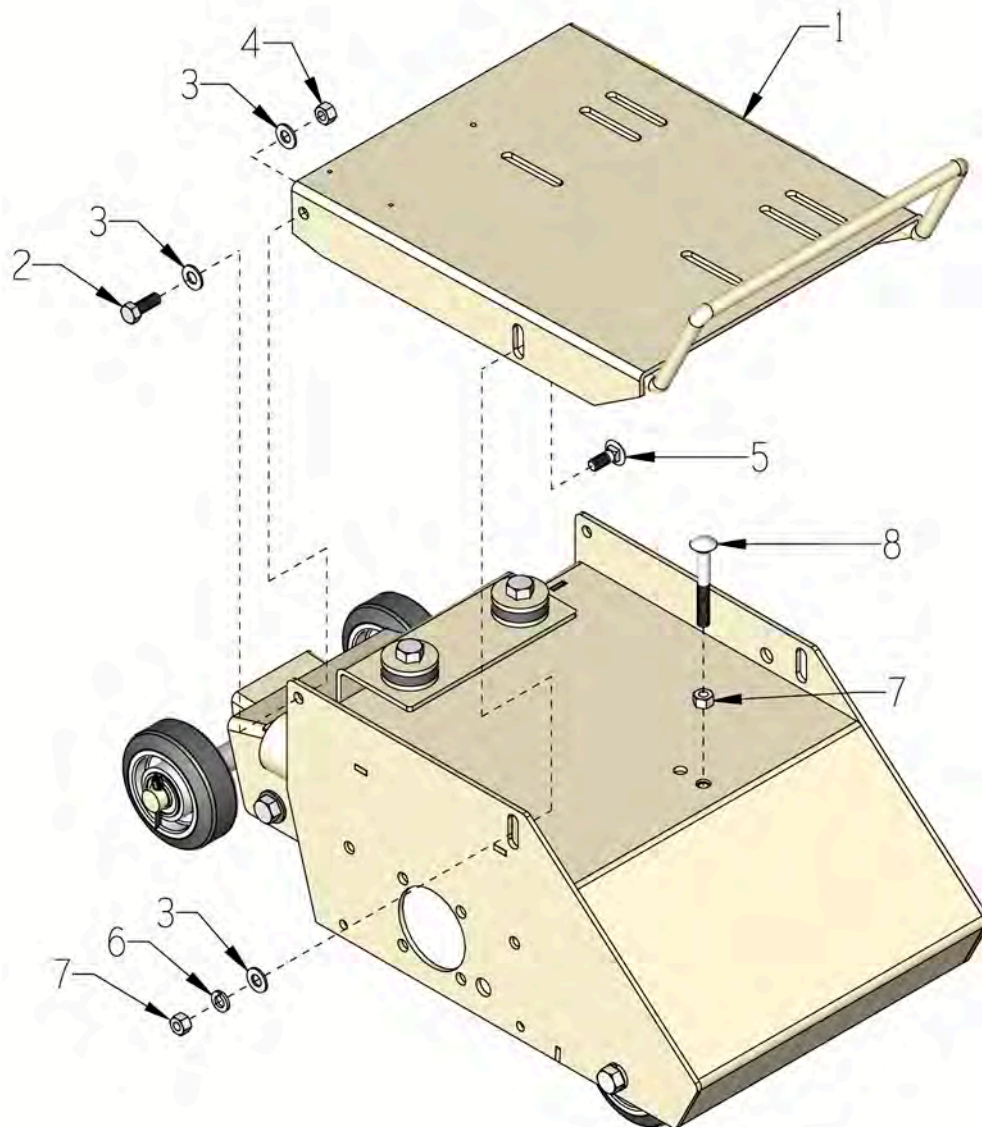
ILLUSTRATION 2: RUBBER SEAL GROUPING

SET PART # 65036-R



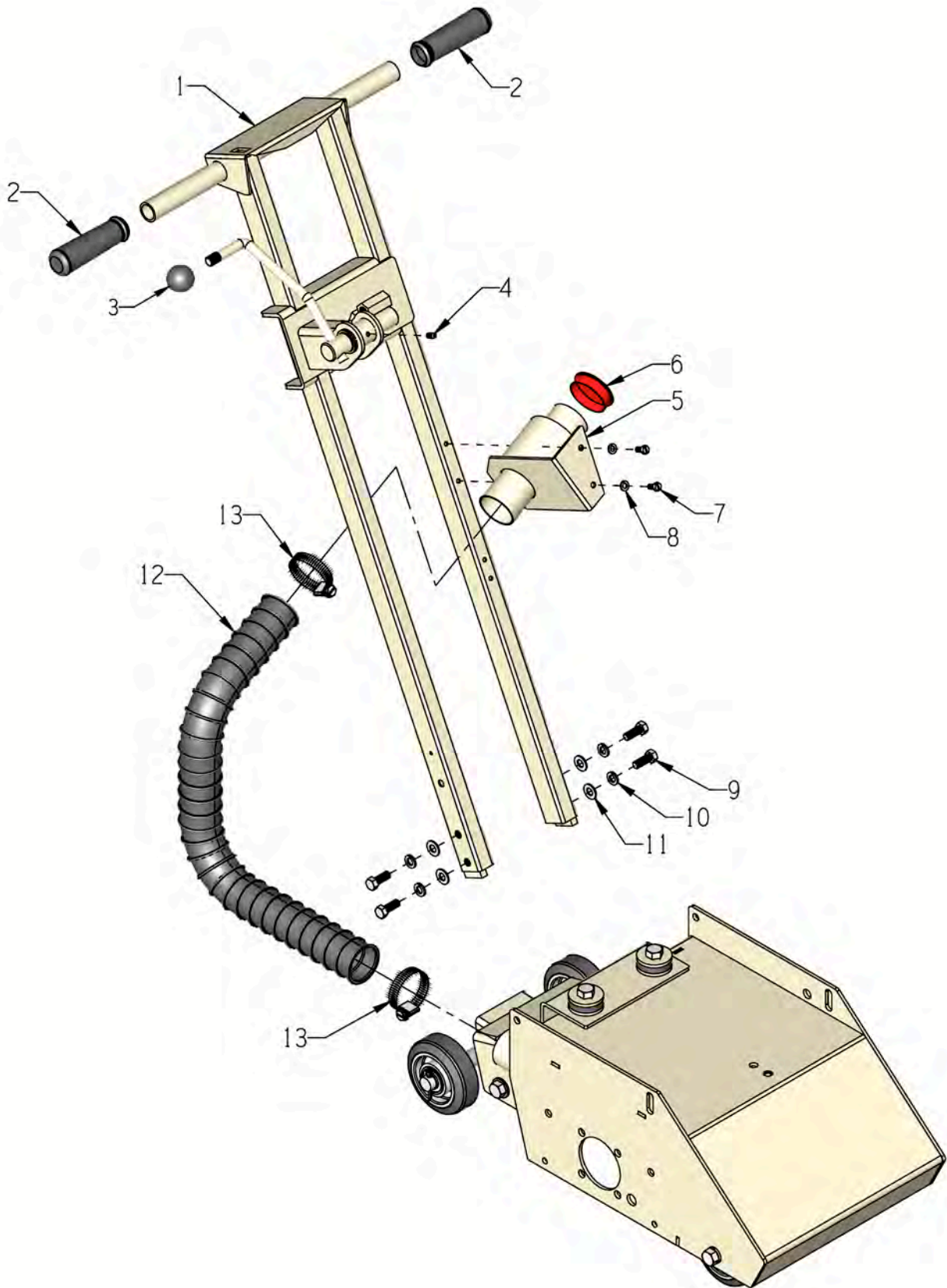
ITEM #	PART #	DESCRIPTION	QTY.
1	65036-R	RUBBERS (SET OF 4), CPM-8 INCLUDES ITEMS 2 THRU 7)	1
2	65152	RUBBER DUST SKIRT, FRONT/REAR CPM-8	2
3	65153	RUBBER DUST SKIRT RET, FRONT & REAR	2
4	65151	RUBBER DUST SKIRT, SIDE CPM-8	2
5	65154	RUBBER DUST SKIRT RETAINER, SIDE	2
6	10018	SCREW, CAP 1/4-20 X 3/4	8
7	10015	NUT, HEX LOCK 1/4-20 ZINC	8

ILLUSTRATION 3: ENGINE/MOTOR MOUNT GROUPING



ITEM #	PART #	DESCRIPTION	QTY.
1	65002 100408	MOUNT, ENGINE/MOTOR, CPM-8G/E MOUNT, PROPANE ENGINE, CPM-8P	1
2	10021	SCREW, CAP 3/8-24 X 1 ZINC	2
3	10025	WASHER, FLAT 3/8 SAE ZINC	6
4	10058	NUT, HEX LOCK 3/8-24 W/ NYLON PATCH	2
5	10802	BOLT, CARRIAGE 3/8-16 X 1 ZINC	2
6	10811	WASHER, LOCK 3/8 ZINC	2
7	10404	NUT, HEX 3/8-16 ZINC	3
8	10909	BOLT, CARRIAGE 3/8-16 X 3 ZINC	1

ILLUSTRATION 4: HANDLE BAR GROUPING

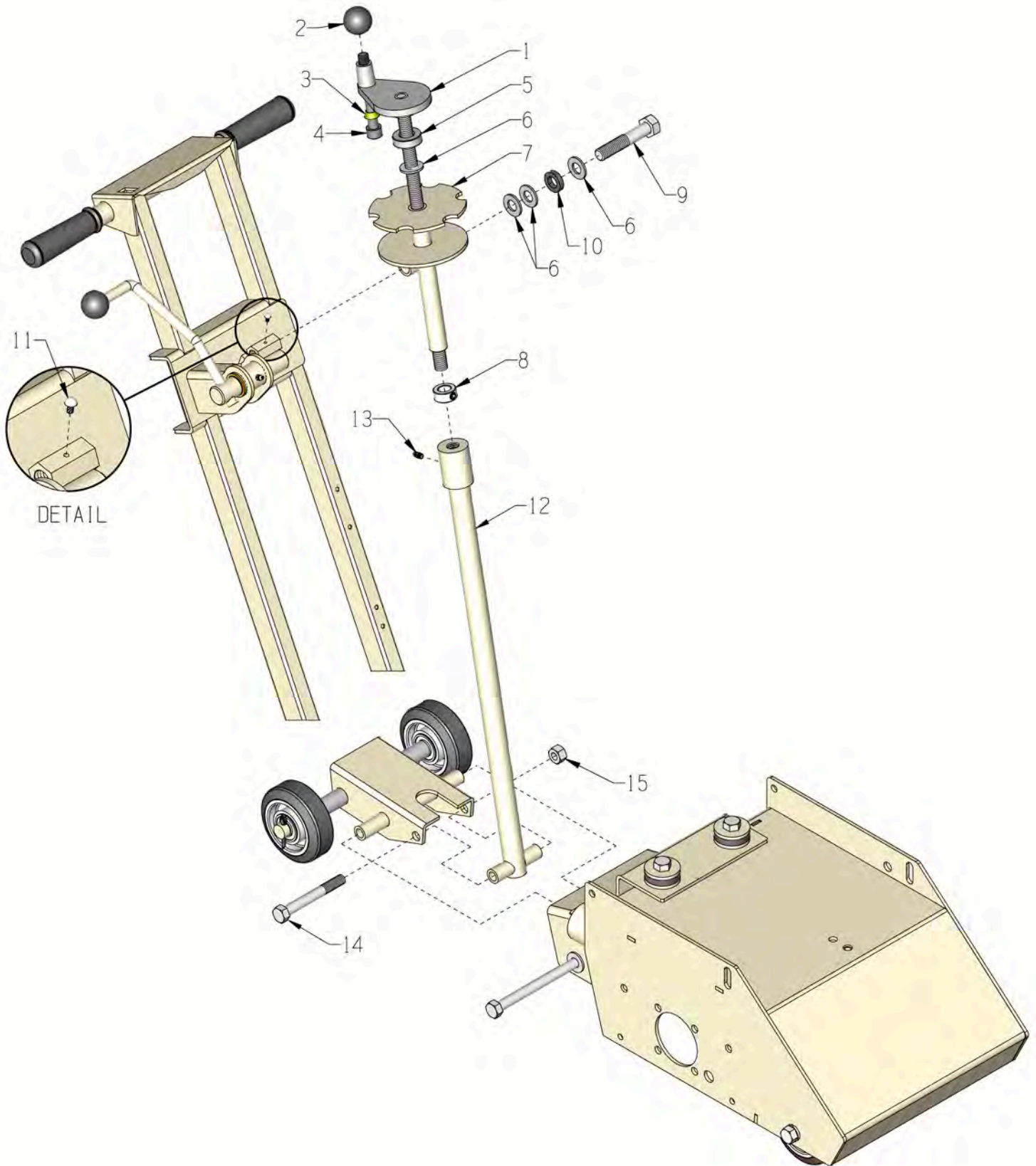


PARTS LISTING

ILLUSTRATION 4: HANDLE BAR GROUPING

ITEM #	PART #	DESCRIPTION	QTY.
1	65009	HANDLE BAR, CPM-8	1
2	10608	GRIP, HAND 1" MODEL AT	2
3	14023	KNOB, BALL 1-3/8 W/ 1/2-13THD, BLK.	1
4	10808	FITTING, GREASE 1/4-28 STRAIGHT	1
5	86347	BRACKET, MULTI-VAC PORT 2-3"	1
6	65021	CAP/PLUG 2" RED PLASTIC, FLANGED	1
7	10846	SCREW, CAP STSHW 1/4-20 X 5/8	2
8	10038	WASHER, LOCK 1/4 ZINC	2
9	10055	SCREW, CAP 3/8-16 X 1 ZINC	4
10	10811	WASHER, LOCK 3/8 ZINC	4
11	10025	WASHER, FLAT 3/8 SAE ZINC	4
12	65098	HOSE, FLEX 2"ID X 22"L	1
13	10766	CLAMP, HOSE, SAE #32, ADJ. TO 2-1/2	2

ILLUSTRATION 5: DEPTH CONTROL GROUPING

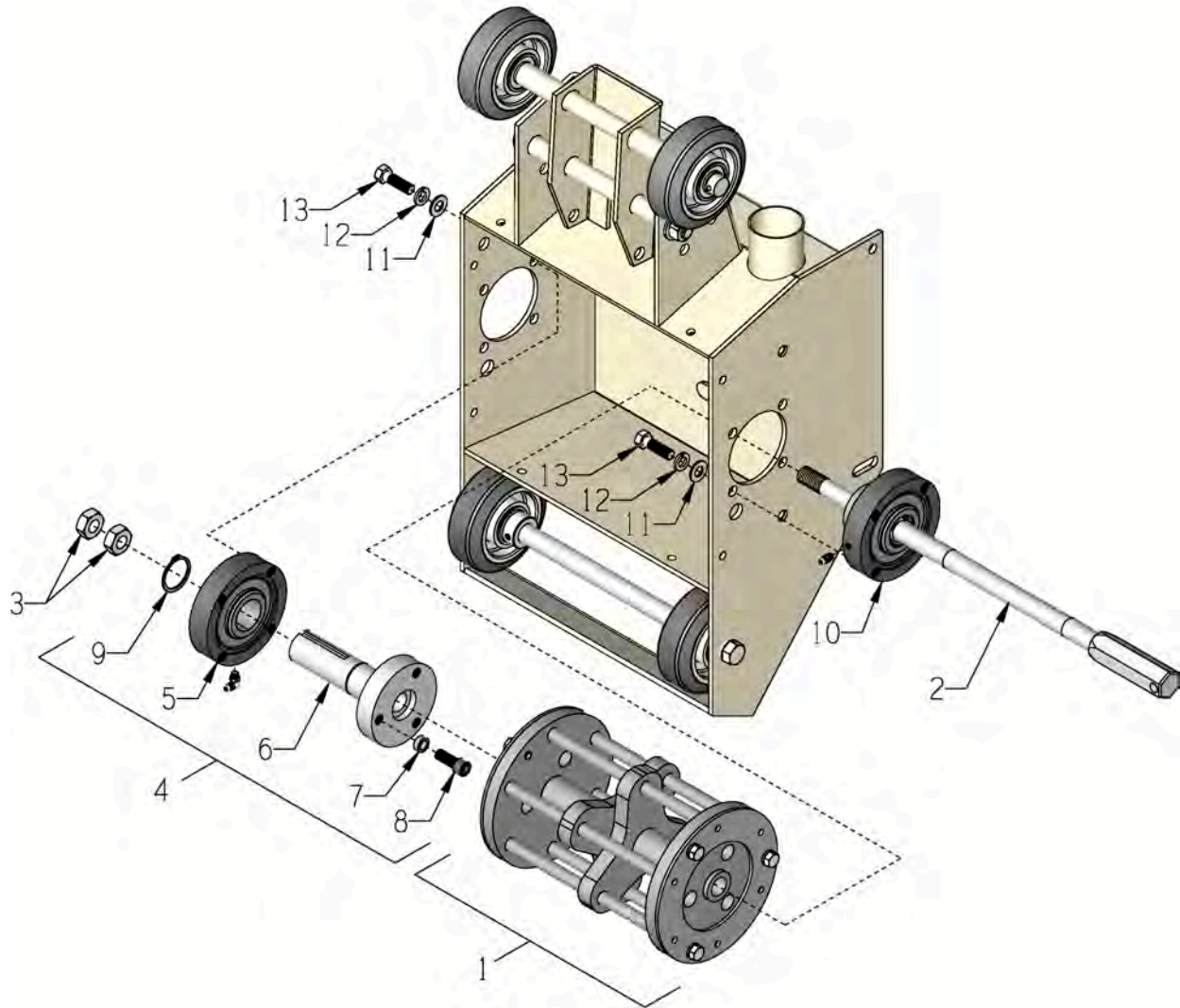


PARTS LISTING

ILLUSTRATION 5: DEPTH CONTROL GROUPING

ITEM #	PART #	DESCRIPTION	QTY.
1	41012	HANDWHEEL, SMALL W/ 5/8-8 X 15"ROD	1
2	14023	KNOB, BALL 1-3/8 W/ 1/2-13THD, BLK.	1
3	50550	SLEEVE, BRASS 1/2" TAPERED	1
4	10411	SCREW, SKT. HD. CAP 1/2-13 X 4 ZINC	1
5	85005	BEARING, THRUST BALL 5/8	1
6	10073	WASHER, FLAT 5/8 SAE ZINC	5
7	101278	LINKAGE SUPPORT, FEATHER, CPM-8	1
8	10096	COLLAR, LOCKING 5/8"ID	1
9	10359	SCREW, CAP 5/8-11 X 3-1/4 ZINC	1
10	79035	BUSHING, RUBBER 1-1/16 X 5/8 X 1/4	1
11	10127	SCREW, DRIVE 1/8 X 1/4"L	1
12	65006	LINKAGE, LOWER, CPM-8	1
13	10808	FITTING, GREASE 1/4-28 STRAIGHT	1
14	81001	SCREW, CAP 1/2-13 X 4	1
15	10407	NUT, HEX LOCK 1/2-13 ZINC	1

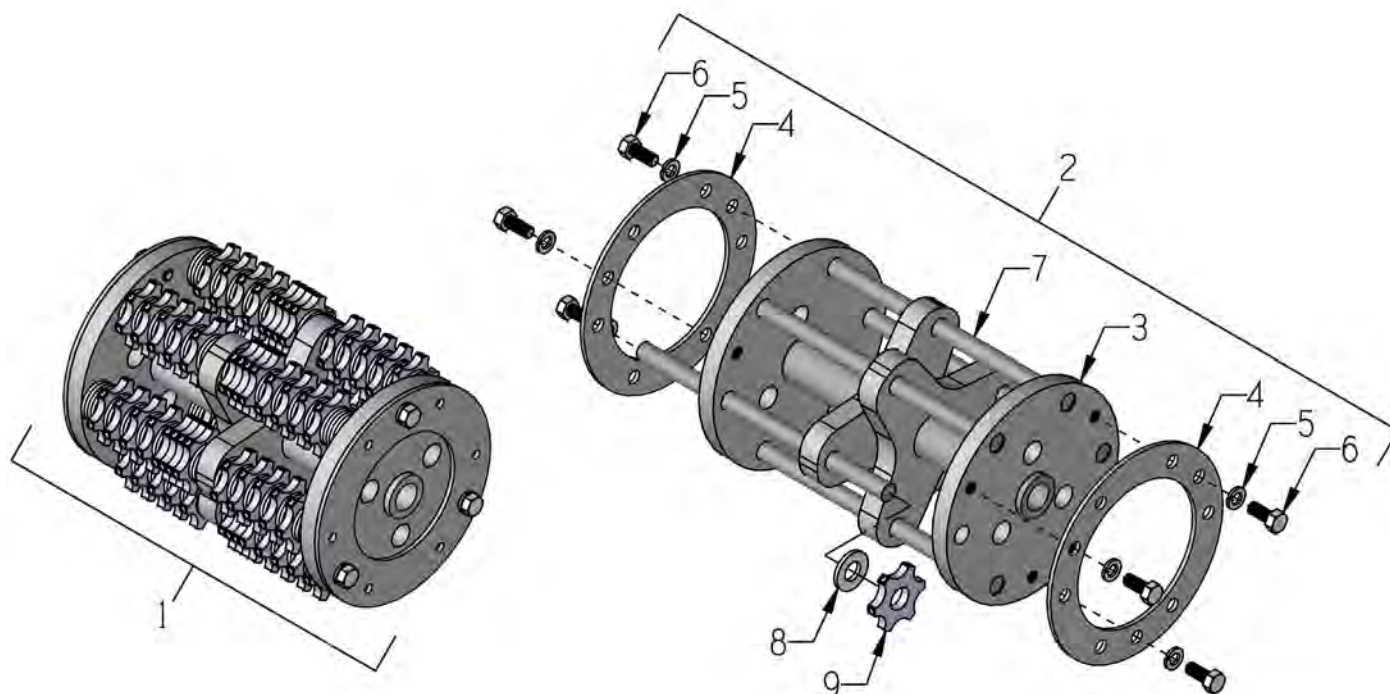
ILLUSTRATION 6: DRUM, SHAFT & BEARING GROUPING



ITEM #	PART #	DESCRIPTION	QTY.
1	65050	DRUM ASSY. COMP. CPM-8 CUTTER (REFER TO ILLUS. 7 FOR BREAKDOWN)	1
2	65037	DRUM SHAFT 18-3/8"L, CPL/M-8	1
3	65039	NUT, HEX JAM 5/8-11 LEFT-HAND, ZINC	2
4	65038A	DRIVER W/ BEARING ASSY., CPL/M-8 (INCLUDES ITEMS 5 THRU 9)	1
5	65056 10961	BEARING ASSY. COMPLETE, 1-1/4"DIA. FITTING, GREASE 1/4-28 X 90° (INCLUDED)	1 1
6	65038	DRIVER, CPL-8 & CPM-8	1
7	10113	SPACER, STEEL 9/16OD X 3/8ID X 7/32	3
8	10878	SCREW, SKT. HD. CAP 3/8-24 X 1 ZINC	3
9	10873	RETAINING RING, EXT. 1-1/4"	1
10	65057 10808	BEARING ASSY. COMPLETE, 1"HEX BORE FITTING, GREASE 1/4-28 STR. (INCLUDED)	1 1
11	10025	WASHER, FLAT 3/8 SAE ZINC	8
12	10811	WASHER, LOCK 3/8 ZINC	8
13	10309	SCREW, CAP 3/8-24 X 1-1/4 ZINC	8

ILLUSTRATION 7: CUTTER DRUM ASSEMBLY

STANDARD - 8" WIDTH

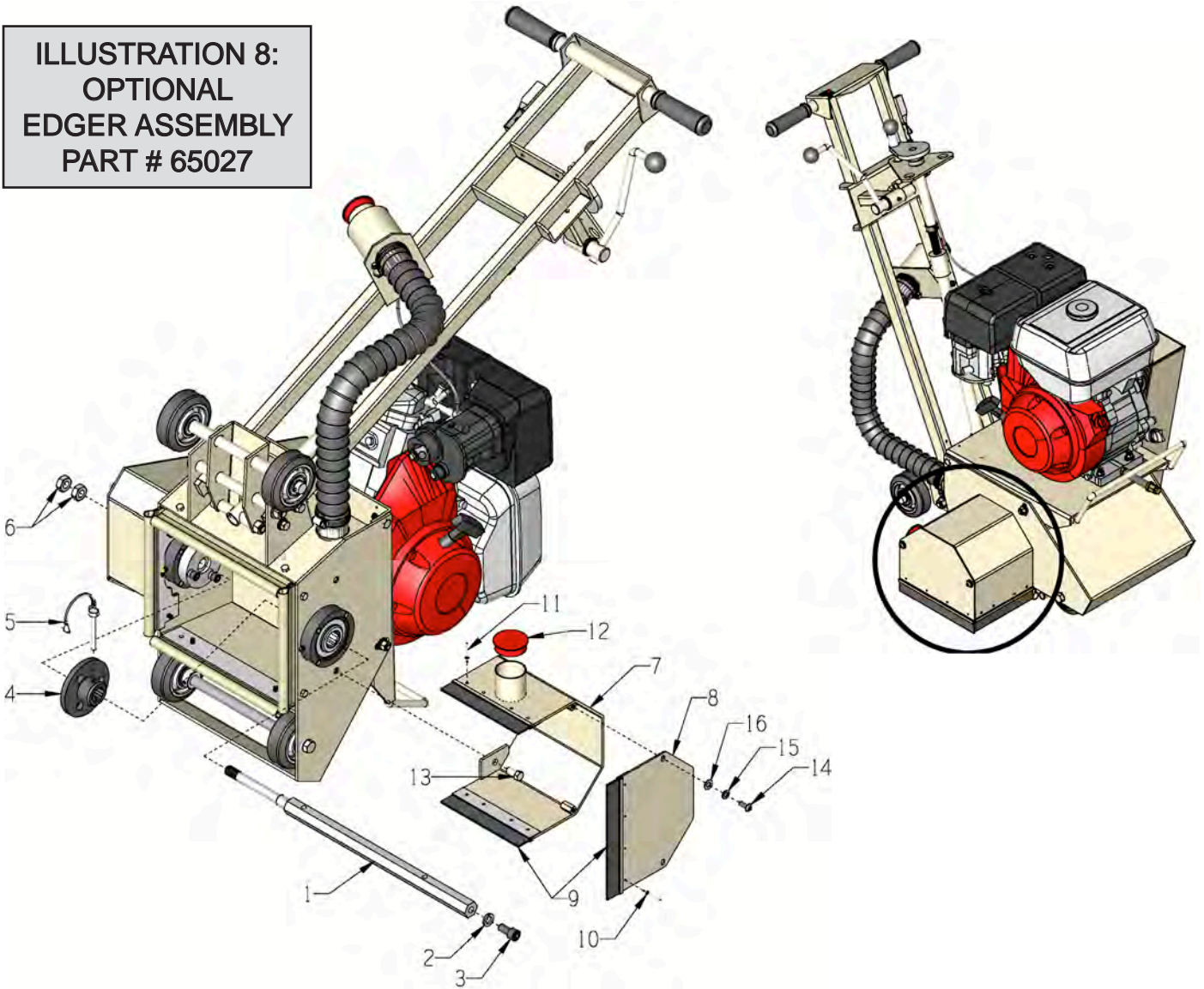


ITEM #	PART #	DESCRIPTION	QTY.
1	65050C	DRUM ASSY LOADED W/ CUTTERS CPM-8 LOADED WITH 78 CP206T CUTTERS & 210 CG227 SPACERS	1
2*	65050	DRUM ASSY. COMP., CPM-8 CUTTER (INCLUDES ITEMS 2 THRU 6)	1
3	65051	DRUM ONLY, CUTTER, CPM-8	1
4	65054	RETAINING PLATE, CUTTER SHAFT	2
5	10801	WASHER, LOCK 5/16 ZINC	6
6	10053	SCREW, CAP 5/16-18 X 3/4	6
7	20150	CP407 SHAFT 1/2 X 8-17/32, CPL/M-8	6
8*	12230	CG227 SPACER 1/2"ID	SEE NOTE
9*		CUTTERS:	
	20156	CP206T 6-PT. CARBIDE 1-3/4"OD x 5/8"ID x 1/4"THK (SHOWN)	SEE NOTE
	20336	CP207T 7-PT. SOLID CARBIDE MILLING 1-1/2"OD x 1/2"ID x 1/2"THK	
	12206	JRS501P 18-PT. POINTED STEEL 2"OD x 1/2"ID x 3/16"THK	
	20206	CP305 12-PT. FLAT TIP STEEL 2"OD x 5/8"ID x 5/32"THK	

***NOTE:**

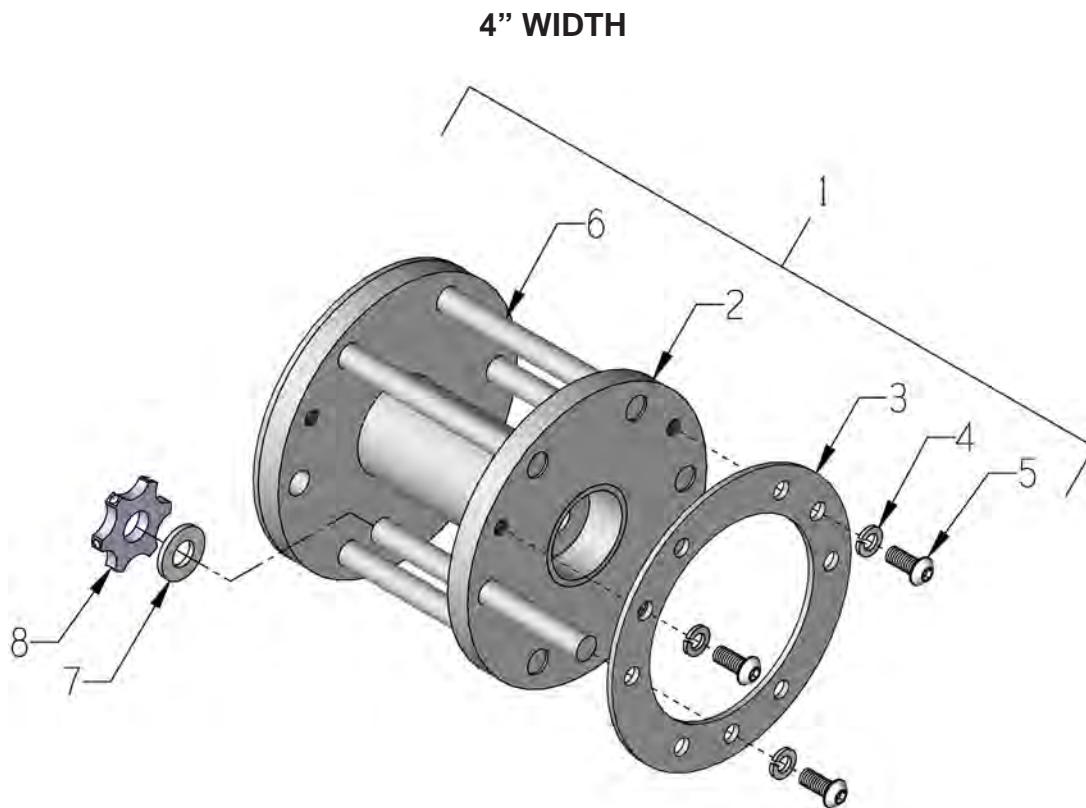
CUTTER WHEELS AND SPACERS ARE NOT INCLUDED WITH THE DRUM ASSEMBLY.
THE NUMBER OF CUTTER WHEELS AND SPACERS VARY WITH TYPE OF SET-UP USED.
REFER TO ASSEMBLY PROCEDURES FOR SUGGESTED SET-UPS AND QUANTITIES.

**ILLUSTRATION 8:
OPTIONAL
EDGER ASSEMBLY
PART # 65027**



ITEM #	PART #	DESCRIPTION	QTY.
1	65025	DRUM SHAFT, CPM-8 EDGER	1
2	10420	WASHER, LOCK 1/2 HEAVY-DUTY	1
3	10490	SCREW, SKT. HD. CAP 1/2-13 X 1	1
4	65026	FLANGE, DRIVER, CPM-8 EDGER	1
5	65028	PIN, WIRE LOCK 5/16"DIA. X 2.75"GRP	1
6	65039	NUT, JAM 5/8-11 LEFT-HAND THD. ZINC	2
7	65023	COVER W/ BRUSHES, CPM-8 EDGER	1
8	65024	COVER SIDE PNL W/ BRUSH, CPM8 EDGER	1
9	65029	BRUSHES (SET OF 3), CPM-8 EDGER	1-SET
10	10128	RIVET, BLIND 1/8 X .250L X .262HD	4
11	10134	RIVET, BLND 3/16X.450"L X.375HD DIA	8
12	65021	CAP/PLUG 2" RED PLASTIC, FLANGED	1
13	10055	SCREW, CAP 3/8-16 X 1	2
14	10627	SCREW, SKT. BUTTON HD. 5/16-18 X3/4	2
15	10801	WASHER, LOCK 5/16 ZINC	2
16	10213	WASHER, FLAT 5/16 SAE ZINC	2

ILLUSTRATION 9: OPTIONAL EDGER CUTTER DRUM ASSEMBLY

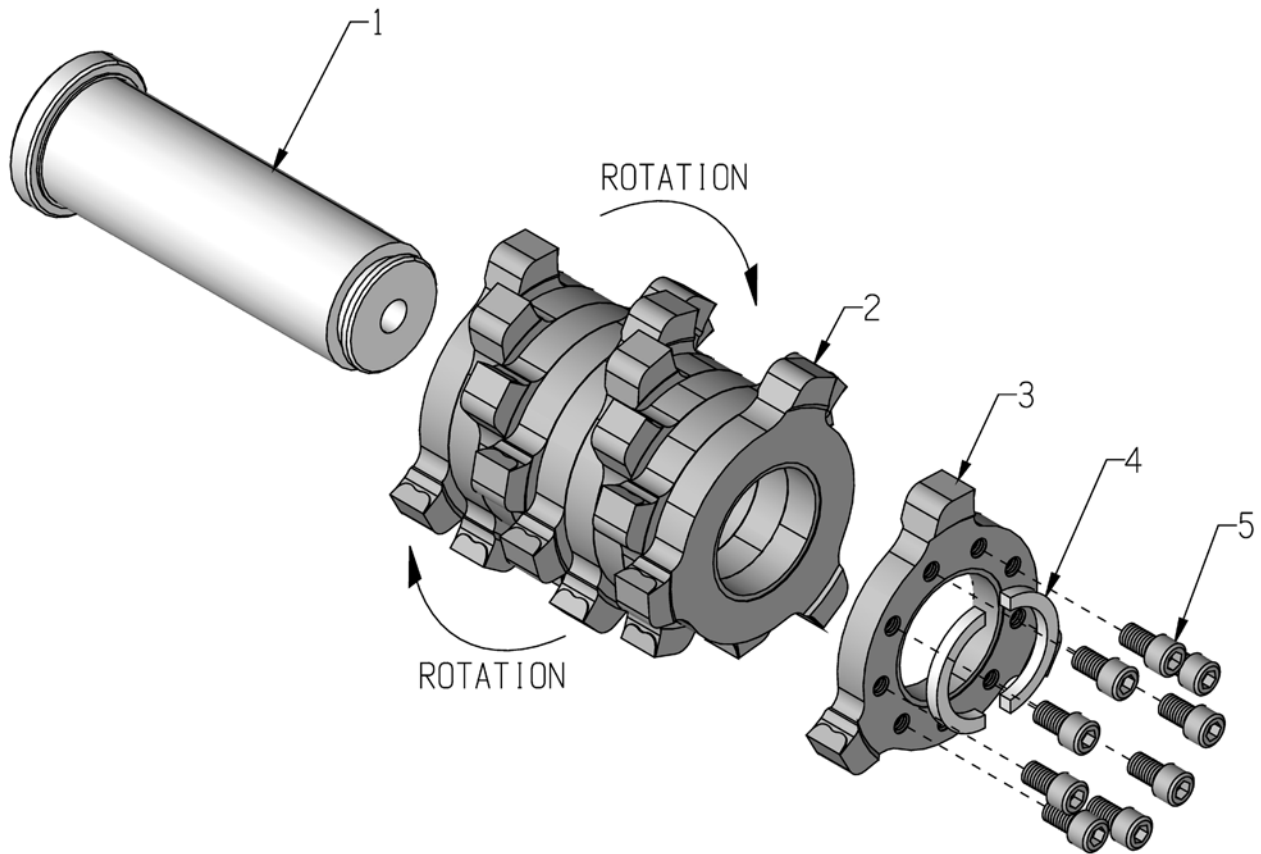


ITEM #	PART #	DESCRIPTION	QTY.
1*	C66040	DRUM ASSY. COMPLETE, CPM-4 CUTTER (INCLUDES ITEMS 2 THRU 6)	1
2	C66041	DRUM ONLY, CUTTER, CPM-4	1
3	65054	RETAINING PLATE, CUTTER SHAFT	1
4	10801	WASHER, LOCK 5/16 ZINC	3
5	10627	SCREW, SKT. BUTTON HD. 5/16-18 X3/4	3
6	C66043	CP410 SHAFT 1/2 X 5-3/16"L, CPM-4	6
7*	12230	CG227 SPACER 1/2"ID	SEE NOTE
8*		CUTTERS:	
	20156	CP206T 6-PT. CARBIDE 1-3/4"OD x 5/8"ID x 1/4"THK (SHOWN)	SEE NOTE
	20336	CP207T 7-PT. SOLID CARBIDE MILLING 1-1/2"OD x 1/2"ID x 1/2"THK	
	12206	JRS501P 18-PT. POINTED STEEL 2"OD x 1/2"ID x 3/16"THK	
	20206	CP305 12-PT. FLAT TIP STEEL 2"OD x 5/8"ID x 5/32"THK	

***NOTE:**

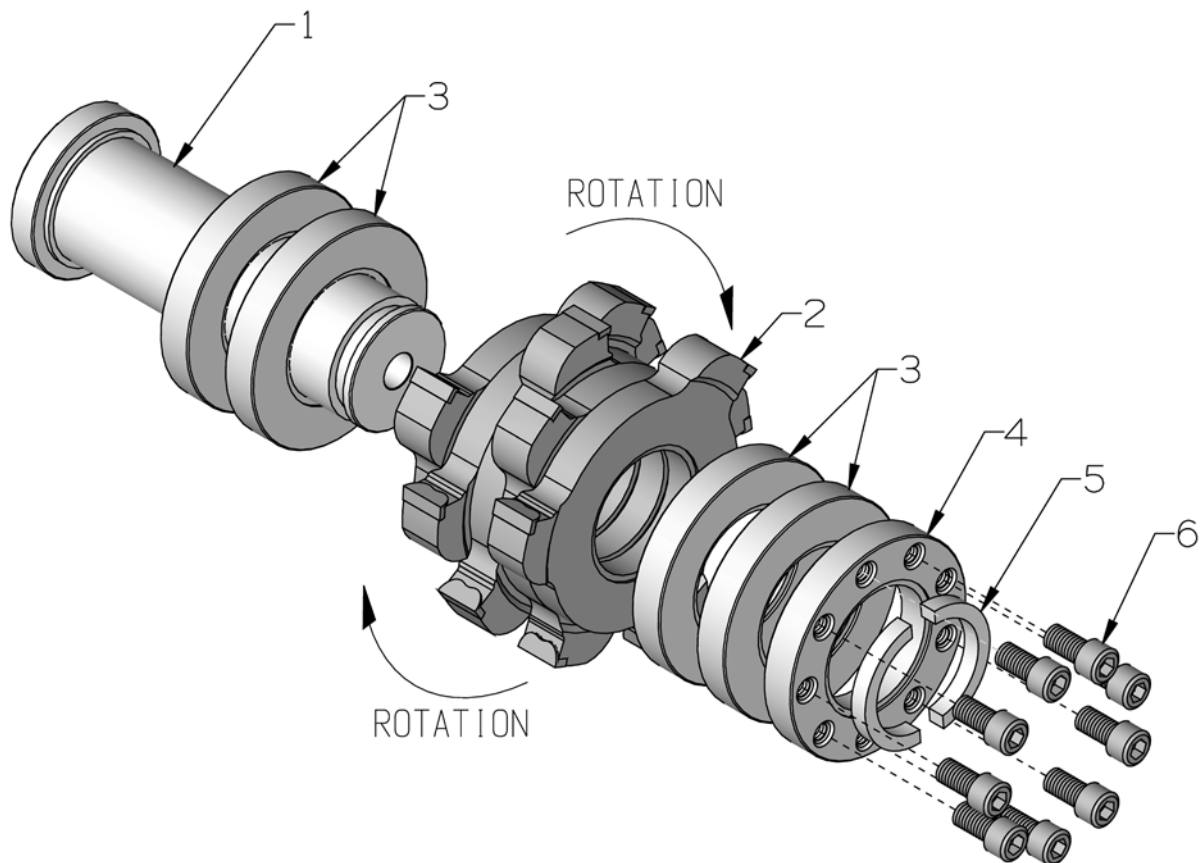
CUTTER WHEELS AND SPACERS ARE NOT INCLUDED WITH THE DRUM ASSEMBLY.
THE NUMBER OF CUTTER WHEELS AND SPACERS VARY WITH TYPE OF SET-UP USED.
REFER TO ASSEMBLY PROCEDURES FOR SUGGESTED SET-UPS AND QUANTITIES.

**ILLUTRATION 10:
8" PCD FLAT TOOTH DRUM ASSEMBLY
PART #65160**



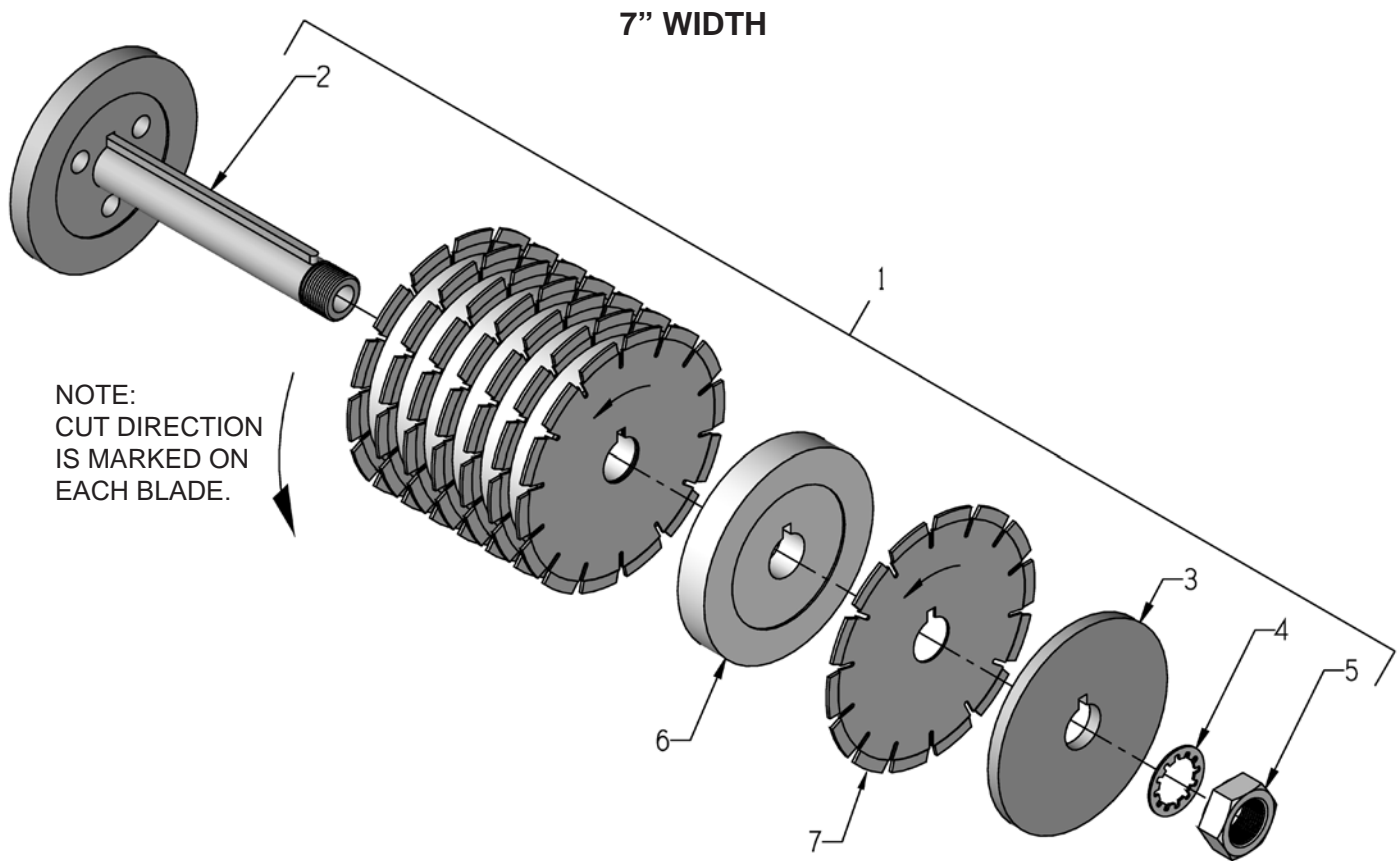
ITEM #	PART #	DESCRIPTION	QTY.
1	65161	MANDREL, CPM-8 PCD DRUM	1
2	65164	PCD PLATE, 7" FLAT TOOTH	9
3	65163	THREADED PRESURE RING	1
4	65162	LOCK RINGS (PAIR)	2
5	10490	SCREW, SKT. HD. CAP 1/2-13 X 1	9

**ILLUTRATION 11:
4" PCD FLAT TOOTH DRUM ASSEMBLY
PART #65170**



ITEM #	PART #	DESCRIPTION	QTY.
1	65161	MANDREL, CPM-8 PCD DRUM	1
2	65164	PCD PLATE, 7" FLAT TOOTH	5
3	65171	SPACER W/O HOLES, PCD DRUM 3/4"W	4
4	65172	SPACER W/ HOLES, PCD DRUM 3/4"W	1
5	65162	LOCK RINGS (PAIR)	2
6	10490	SCREW, SKT. HD. CAP 1/2-13 X 1	9

**ILLUSTRATION 12:
OPTIONAL DIAMOND GROOVING HEAD ASSEMBLY**



ITEM #	PART #	DESCRIPTION	QTY.
1*	65077	HEAD ASSY., DIAMOND GROOVING, CPM-8 (INCLUDES ITEM 2 THRU 5)	1
2	65070	ARBOR, DIAMOND GROOVING HEAD,CPM-8	1
3	65071	ARBOR BLADE CAP 6", CPM-8	1
4	65075	WASHER, LOCK, INT. TOOTH 1-1/4"	1
5	65076	NUT, HEX JAM 1 1/4-12	1
6*	65072 65073 65155 65078 65074	SPACERS: 6"OD X 1-1/4"ID X .063 (MINIMUM BLADE SPACING) 6"OD X 1-1/4"ID X .430 6"OD X 1-1/4"ID X .594 6"OD X 1-1/4"ID X .625 6"OD X 1-1/4"ID X .930 (SHOWN)	SEE NOTE
7*	39808 39837 39806	7"DIA. DIAMOND BLADES WITH 1.25" HOLE & KEYWAY: DIAM.BLADE DCC05S 7X.090X1.25 W/ KW (3/32"THK.) DIAM.BLADE DCC05S 7X.125X1.25 W/ KW (1/8"THK.) DIAM.BLADE DCC05S 7X.250X1.25 W/ KW (1/4"THK.)	SEE NOTE

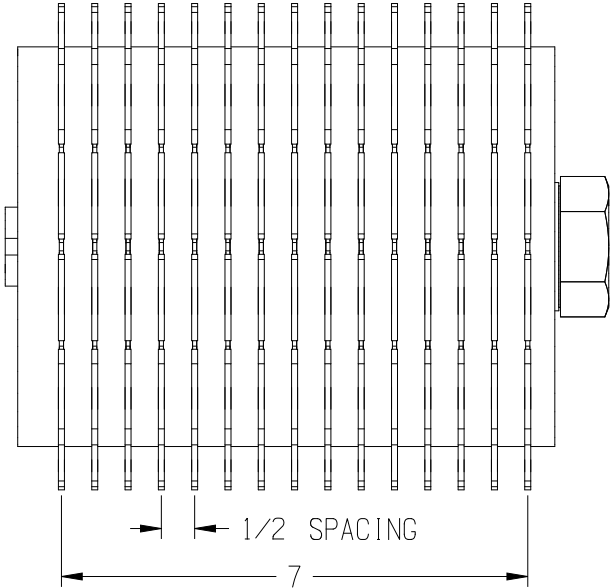
*NOTE:
DIAMOND BLADES AND SPACERS ARE NOT INCLUDED WITH THE HEAD ASSEMBLY.
THESE QUANTITIES VARY WITH THE TYPE OF SET-UP USED.
REFER TO SET-UP DRAWINGS ON PAGES 15, 16 AND 17 FOR QUANTITIES.

1/2" DIAMOND GROOVING HEAD SET-UP WITH 3/32" THICK BLADES

1/2" CENTER-TO-CENTER SPACING

(QTY. 15) 39808 .090"THK BLADES

(QTY. 14) 65073 .430"THK SPACERS

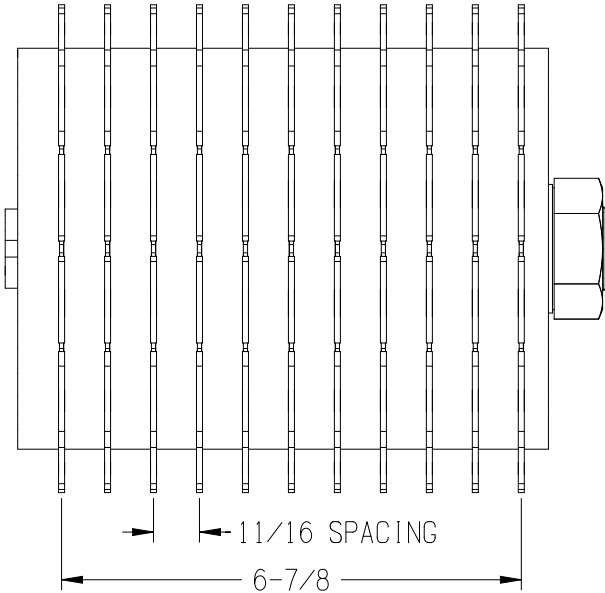


11/16" DIAMOND GROOVING HEAD SET-UP WITH 3/32" THICK BLADES

11/16" CENTER-TO-CENTER SPACING

(QTY. 11) 39808 .090"THK BLADES

(QTY. 10) 65078 .625"THK SPACERS

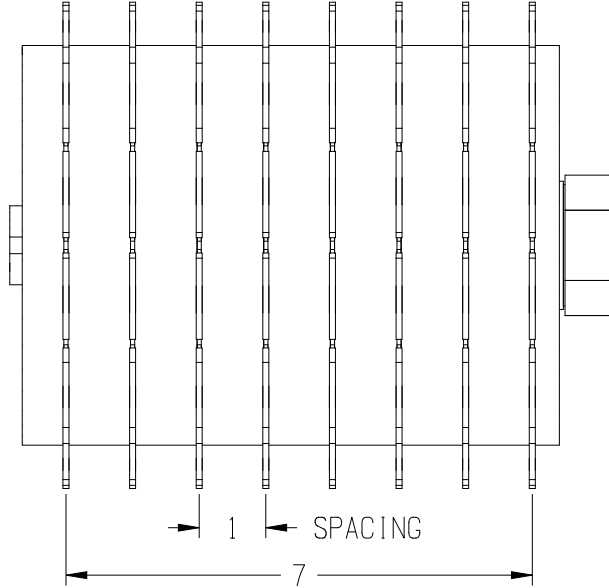


1" DIAMOND GROOVING HEAD SET-UP WITH 3/32" THICK BLADES

1" CENTER-TO-CENTER SPACING

(QTY. 8) 39808 .090"THK BLADES

(QTY. 7) 65074 .930"THK SPACERS



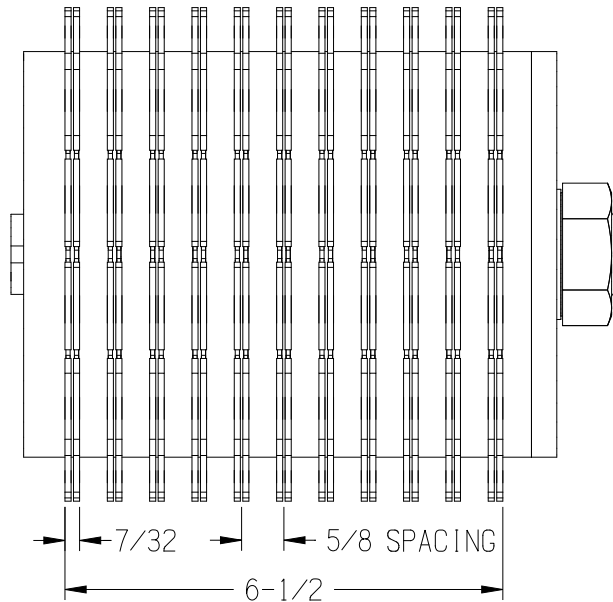
5/8" DIAMOND GROOVING HEAD SET-UP WITH 3/32" THICK BLADES (PAIRED)

5/8" CENTER-TO-CENTER SPACING

(QTY. 22) 39808 .090"THK BLADES

(QTY. 11) 65072 .063"THK SPACERS (BETWEEN BLADES)

(QTY. 11) 65073 .430"THK SPACERS (BETWEEN PAIRS)

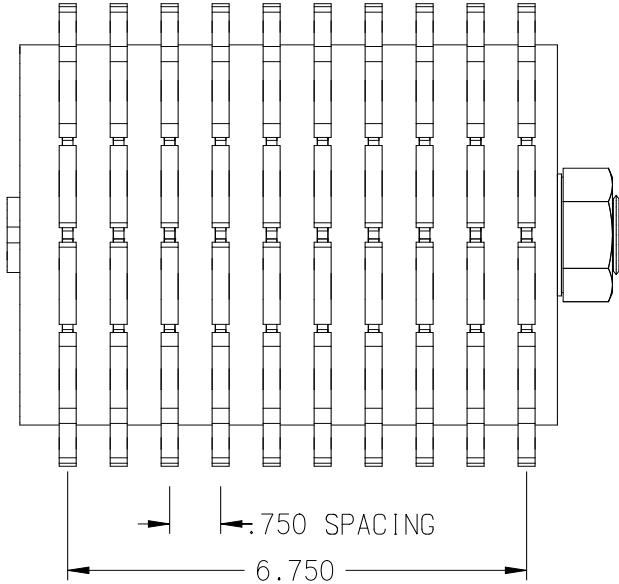


3/4" DIAMOND GROOVING HEAD SET-UP WITH 1/4" THICK BLADES

3/4" CENTER-TO-CENTER SPACING

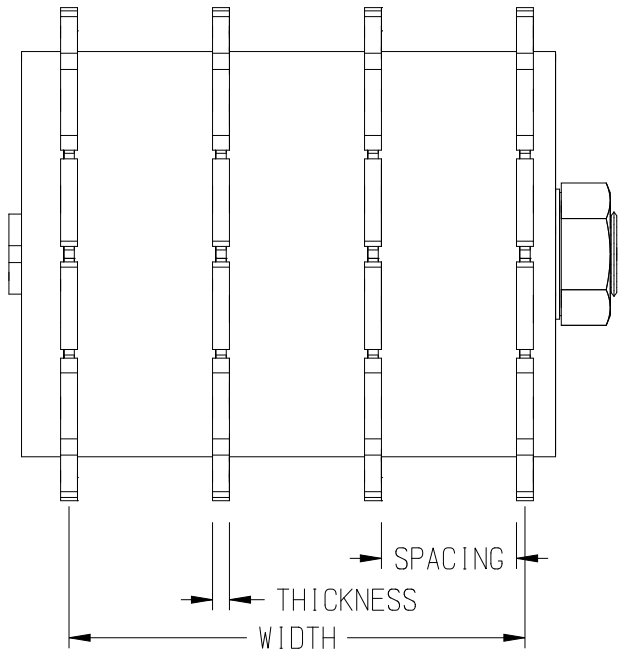
(QTY. 10) 39806 .250"THK BLADES

(QTY. 9) 65155 .594"THK SPACERS

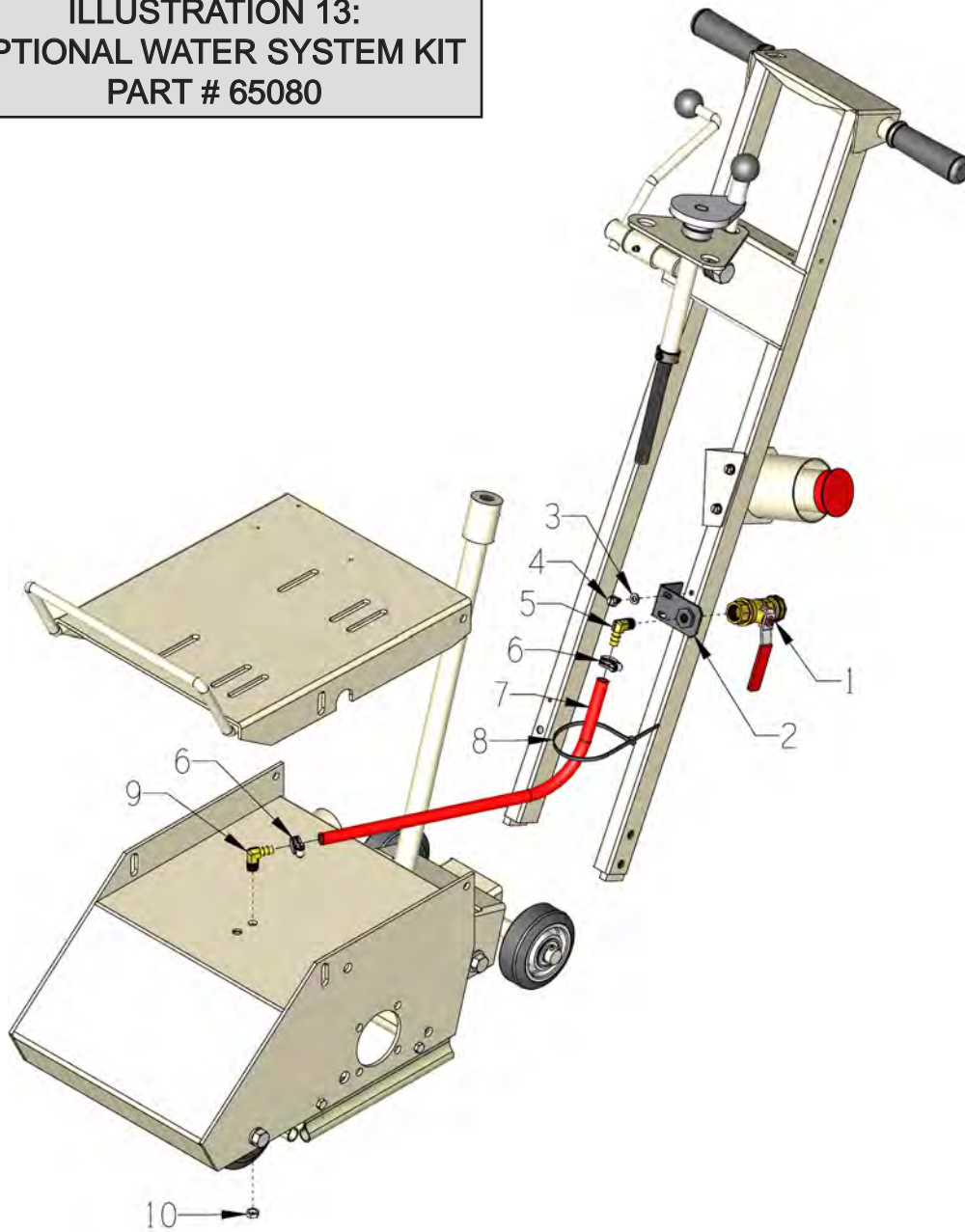


CUSTOM SET-UPS CAN BE CREATED UPON REQUEST

Specify spacing, thickness and a width that is 7 inches or less as shown below.

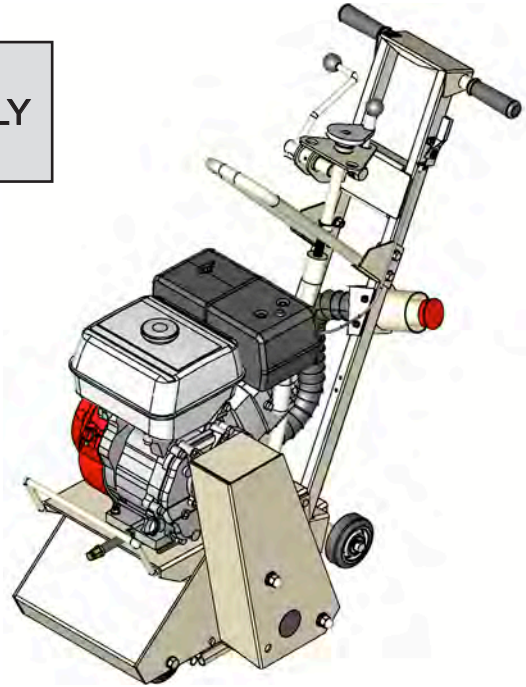
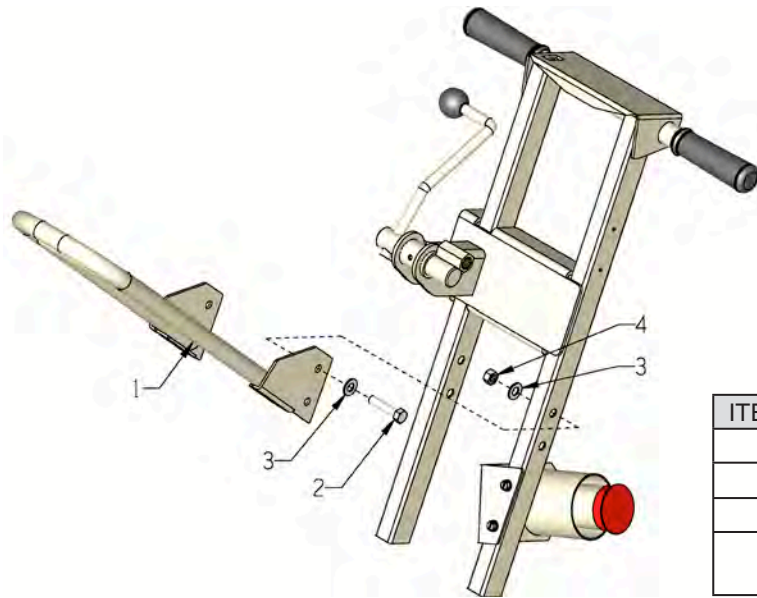


**ILLUSTRATION 13:
OPTIONAL WATER SYSTEM KIT
PART # 65080**



ITEM #	PART #	DESCRIPTION	QTY.
1	10711A	VALVE & HOSE CONNECTOR ASSY.	1
2	56022	BRACKET, WATER VALVE	1
3	10038	WASHER, LOCK 1/4 ZINC	2
4	10846	SCREW, CAP STSHW 1/4-20 X 5/8	2
5	10799	BARB ELBOW 90, 3/8HOSE X 1/4MPT	1
6	10714	CLAMP, HOSE, SAE #4, ADJ. TO 5/8"	2
7	65089	HOSE, WATER 3/8"ID X 20"L	1
8	10982	TIE, CABLE, BLACK NYLON 12"	1
9	11562	BARB ELBOW 90, 3/8HOSE X 1/8MPT	1
10	10864	NUT, HEX PANEL 1/8-27 NPSM ZINC	1

**ILLUSTRATION 14:
OPTIONAL LIFTING BAIL ASSEMBLY
PART # 65096A**



ITEM #	PART #	DESCRIPTION	QTY.
1	65096	BAIL ONLY, LIFTING	1
2	10029	SCREW, CAP 3/8-24 X 1-3/4	4
3	10025	WASHER, FLAT 3/8 SAE ZINC	8
4	10058	NUT, HEX LOCK 3/8-24 W/ NYLON PATCH	4

INSTRUCTIONS FOR MOUNTING LIFTING BAIL

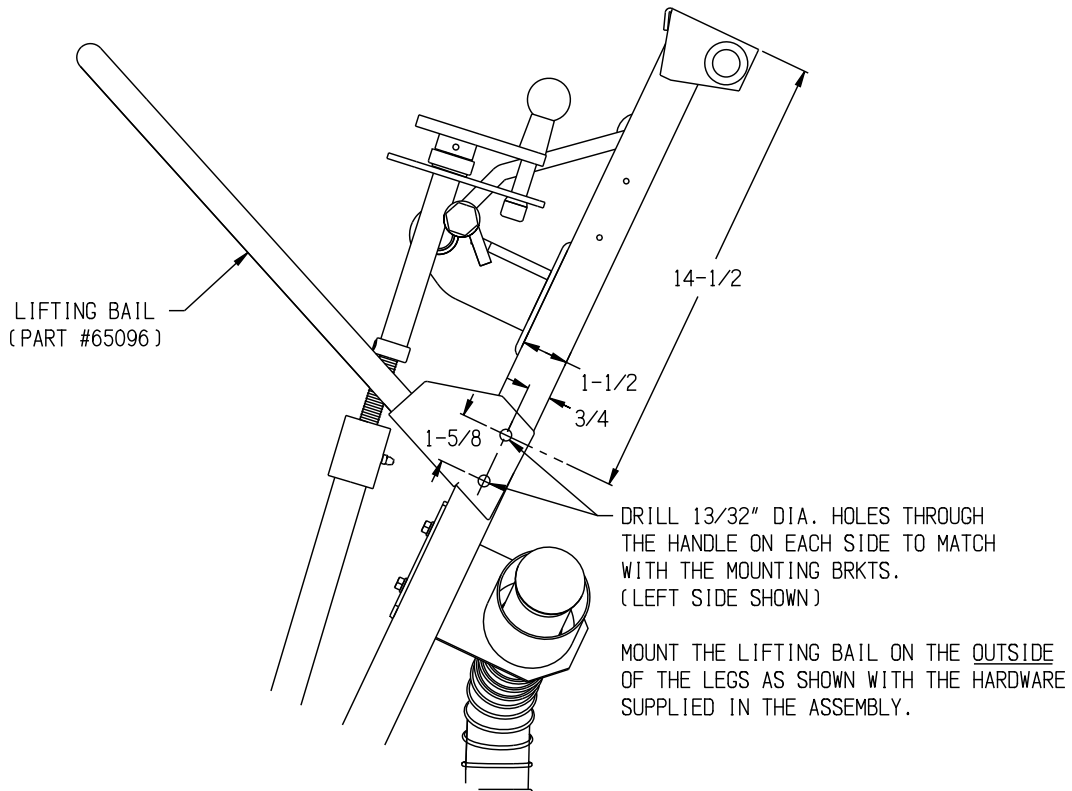
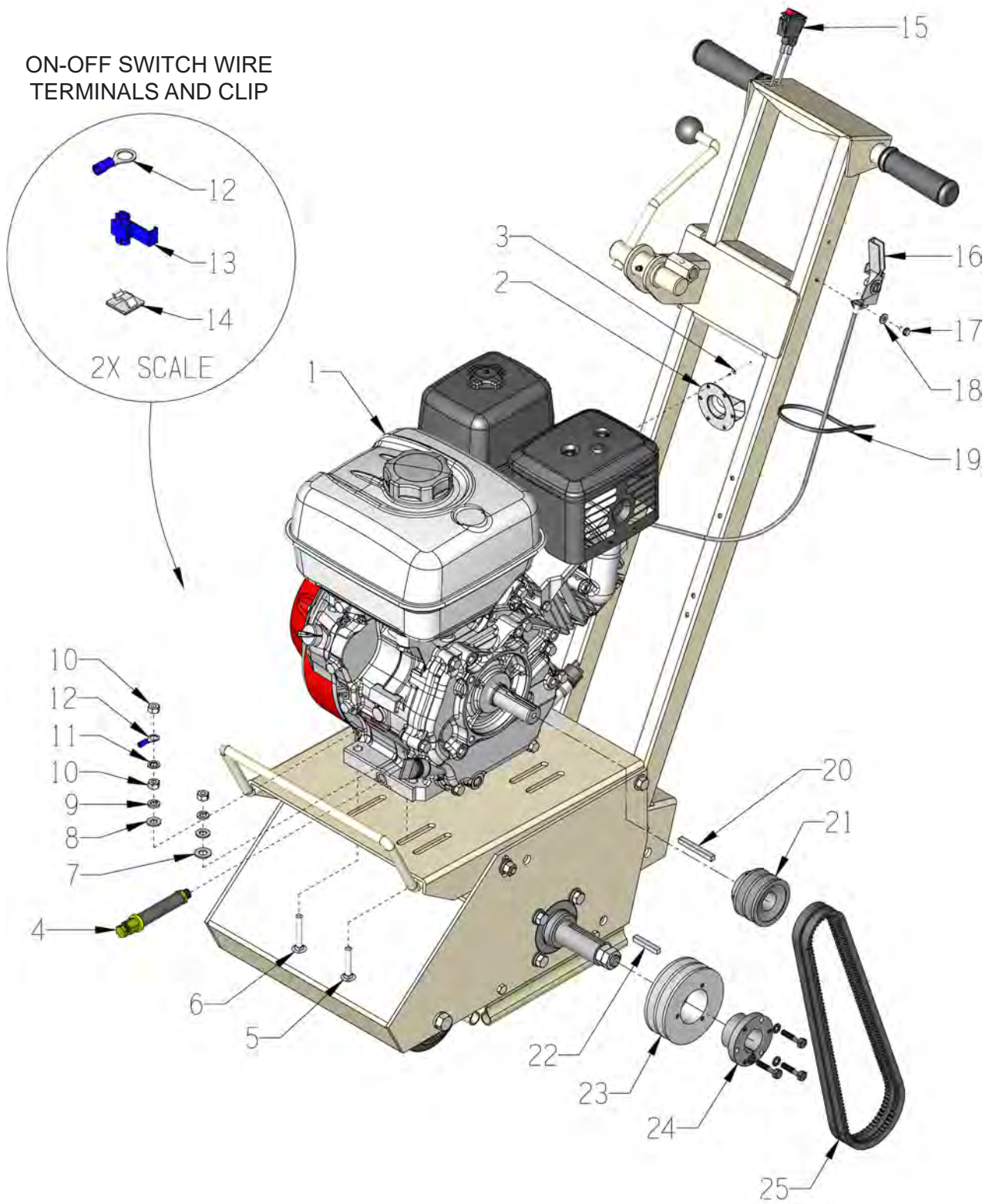


ILLUSTRATION 15: GASOLINE ENGINE GROUPING



PARTS LISTING

ILLUSTRATION 15: GASOLINE ENGINE GROUPING

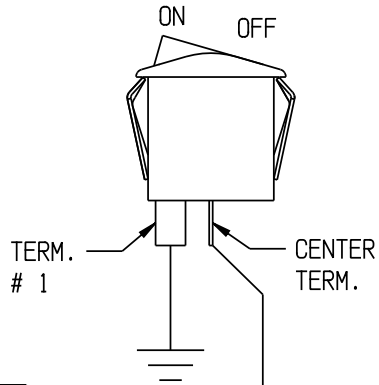
ITEM #	PART #	DESCRIPTION	QTY.
1	15027	ENGINE, HONDA GX270UT2QC9	1
2	10625	MUFFLER CAP, HONDA #18331-ZE3-811	1
3	10128	RIVET, BLIND 1/8 X .250L X .262HD	2
4	40328	OIL DRAIN KIT, 9/11/13 HP HONDA	1
5	10918	BOLT, CARRIAGE 5/16-18 X 1-3/4	3
6	10056	BOLT, CARRIAGE 5/16-18 X 2	1
7	10025	WASHER, FLAT 3/8 SAE ZINC	1
8	10213	WASHER, FLAT 5/16 SAE ZINC	4
9	10801	WASHER, LOCK 5/16 ZINC	4
10	10054	NUT, HEX 5/16-18 ZINC	5
11	10452	WASHER, LOCK, INT. TOOTH 5/16"	1
12	10968	TERM., RING 5/16 16-14GA. INSULATED	1
13	10970	CONN., WIRE QUICK-SPLICE 18-14 GA. (SEE WIRING DIAGRAM ON PAGE 27)	1
14	36042	ADHESIVE CORD CLIP 5/8"SQ.	2
15	15201A	SWITCH W/ WIRES, ROCKER RED ON-OFF	1
16	40388	CABLE, THROTTLE, LEVER-TYPE 24"	1
17	10877	SCREW, CAP STSHW 10-24 X 1/2	2
18	10831	WASHER, LOCK, INT. TOOTH #10	2
19	10982	TIE, CABLE, BLACK NYLON 12"	1
20	10307	KEY 1/4SQ X 2-1/4	1
21	10553	SHEAVE 2.5"OD X 2GR.A X 1"BORE	1
22	40317	KEY 1/4SQ X 1-5/8	1
23	65045	SHEAVE 4.05"OD X 2GR.A X SH	1
24	10505	BUSHING, SHEAVE SH X 1-1/4"BORE	1
25	81007	BELT AX-33	2

THIS PAGE WAS LEFT BLANK INTENTIONALLY

MODEL CPM-8G

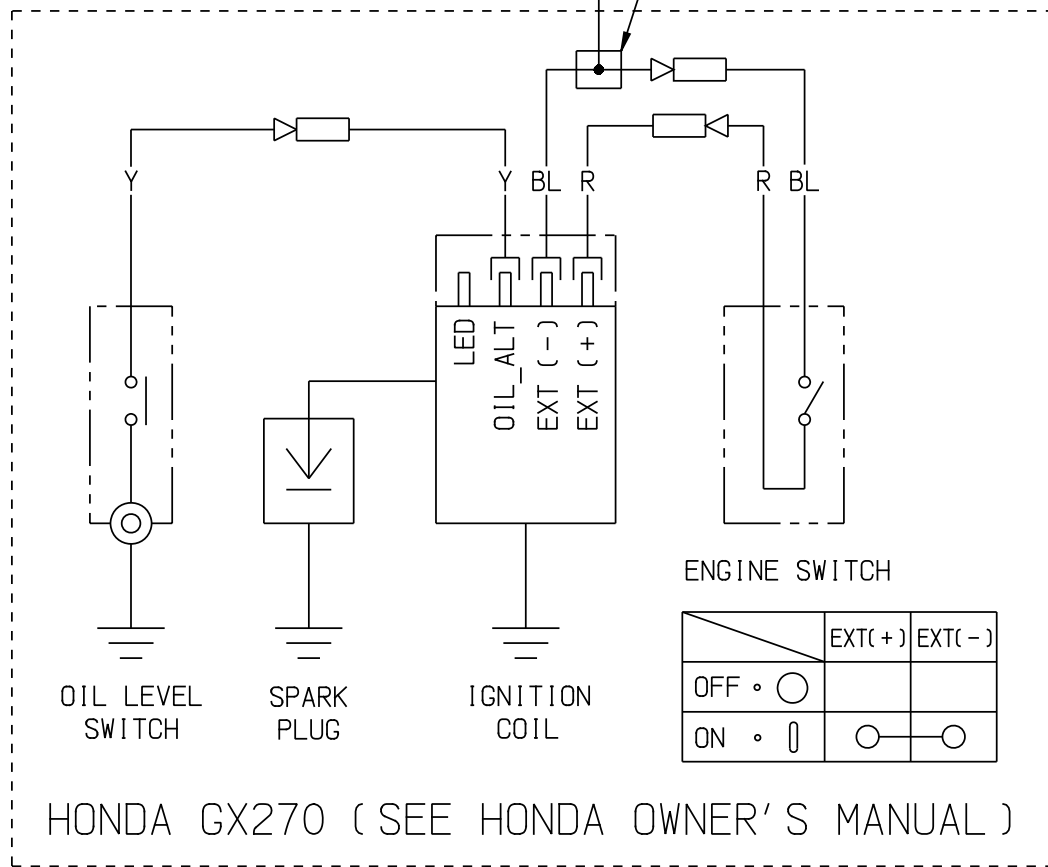
WIRING DIAGRAM FOR HONDA ENGINE

ON-OFF ROCKER SWITCH
P/N 15201A
(LOCATED ON HANDLE)



WIRE COLORS
BL = BLACK
R = RED
Y = YELLOW

QUICK-SPLICE
WIRE CONNECTOR
P/N 10970



OIL LEVEL SWITCH

SPARK PLUG

IGNITION COIL

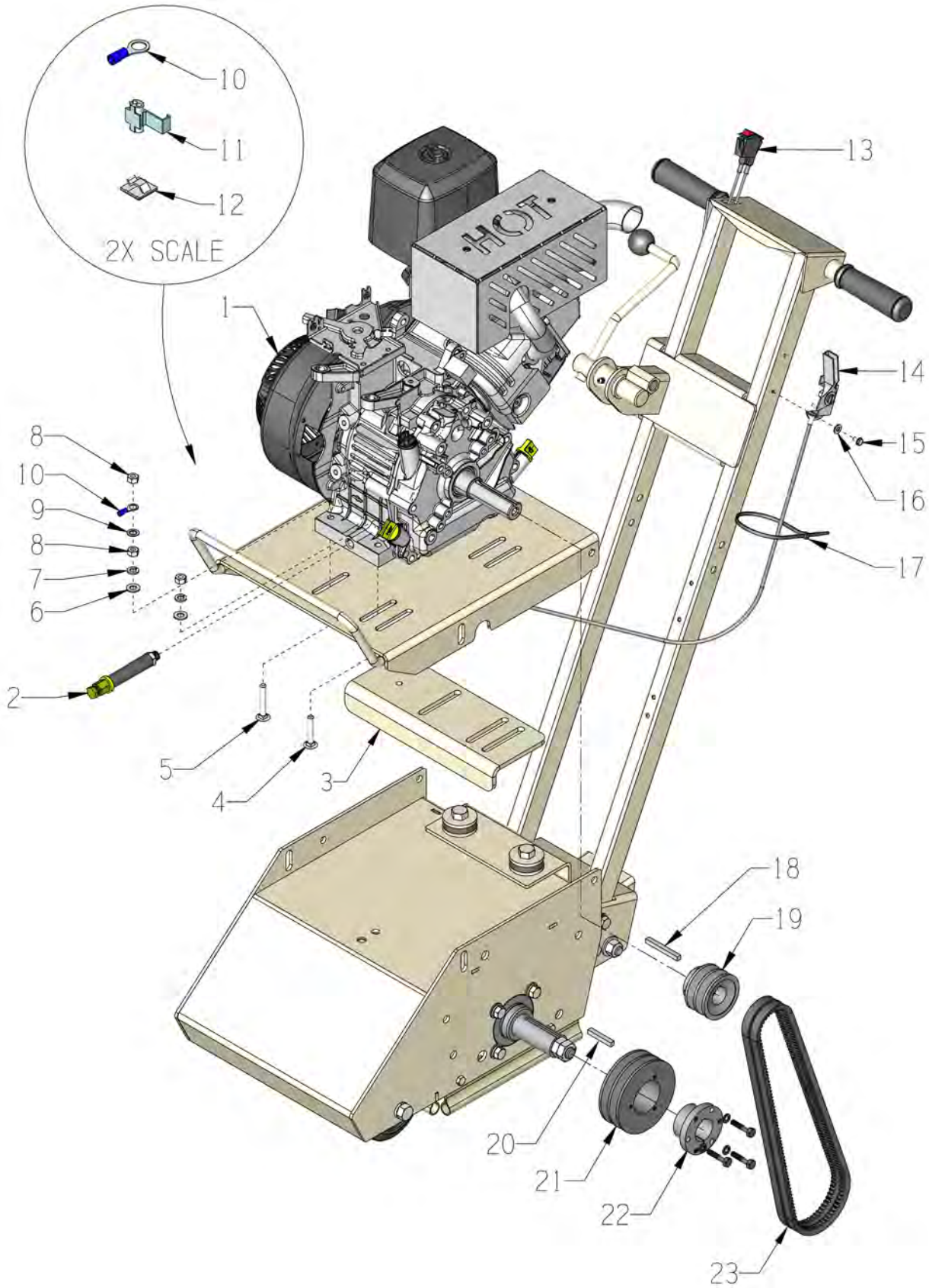
ENGINE SWITCH

	EXT(+)	EXT(-)
OFF • ○		
ON •	○	○

HONDA GX270 (SEE HONDA OWNER'S MANUAL)

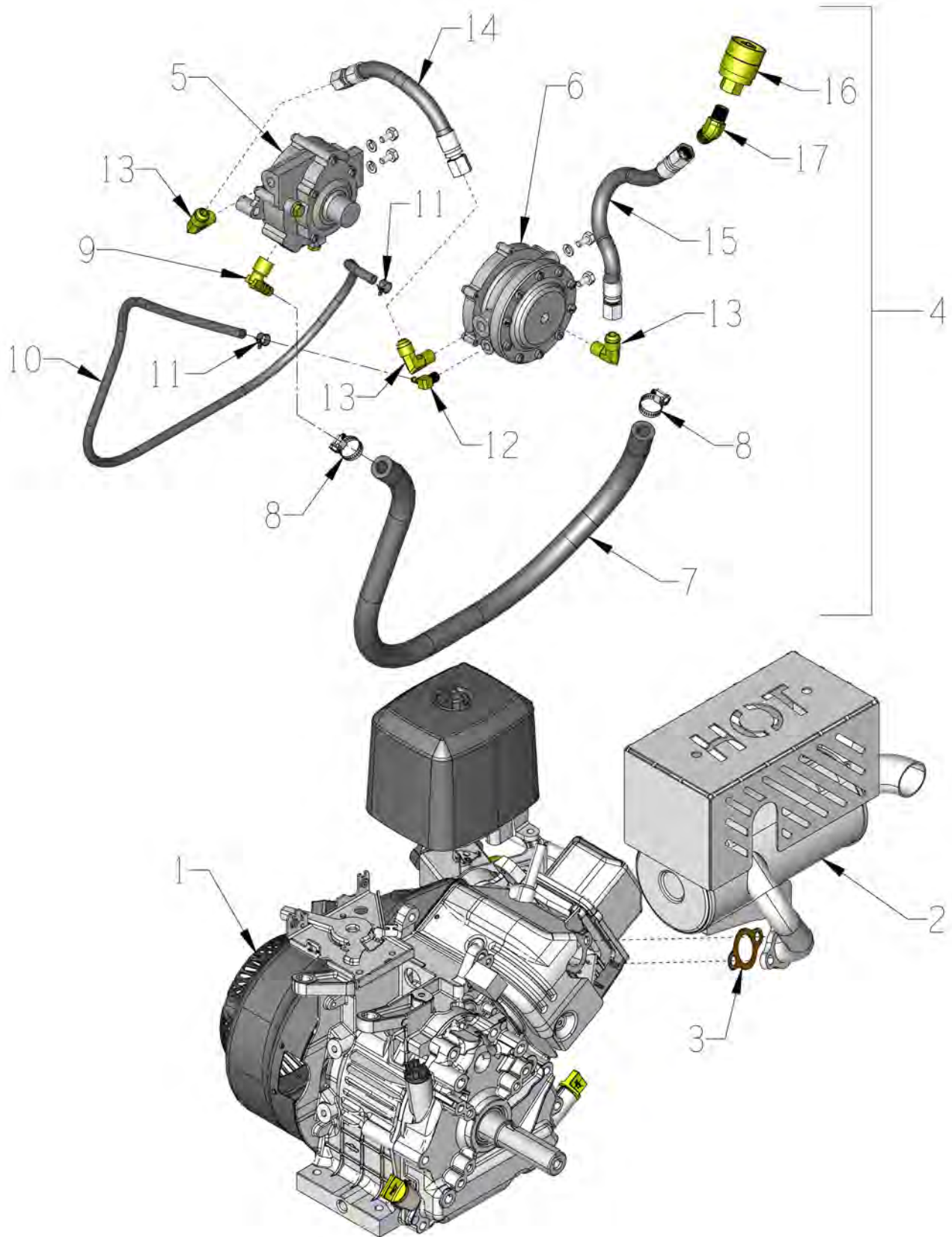
MODEL CPM-8P

ILLUSTRATION 16: PROPANE ENGINE GROUPING



PARTS LISTING			
ILLUSTRATION 16: PROPANE ENGINE GROUPING			
ITEM #	PART #	DESCRIPTION	QTY.
1	15095	ENGINE, 305CC VANGUARD PULL START INCLUDES FUEL CONVERSION KIT. SEE ILLUSTRATION 17 FOR DETIALS.	1
2	100529	OIL DRAIN KIT 1/4MIP X 4-1/4"	1
3	100484	PLATE, ENGINE REINFORCING, CPM-8P	1
4	10918	BOLT, CARRIAGE 5/16-18 X 1-3/4 ZINC	3
5	10056	BOLT, CARRIAGE 5/16-18 X 2 ZINC	1
6	10213	WASHER, FLAT 5/16 SAE ZINC	4
7	10801	WASHER, LOCK 5/16 ZINC	4
8	10054	NUT, HEX 5/16-18 ZINC	5
9	10452	WASHER, LOCK, INT. TOOTH 5/16"	1
10	10968	TERM., RING 5/16 16-14GA. INSULATED	1
11	10970	CONN., WIRE QUICK-SPLICE 18-14 GA.	1
12	36042	ADHESIVE CORD CLIP 5/8"SQ.	2
13	15201A	SWITCH W/ WIRES, ROCKER RED ON-OFF	1
14	3611	CABLE, THROTTLE, LEVER-TYPE 54"	1
15	10877	SCREW, CAP STSHW 10-24 X 1/2	2
16	10831	WASHER, LOCK, INT. TOOTH #10	2
17	10982	TIE, CABLE, BLACK NYLON 12"	1
18	10307	KEY 1/4SQ X 2-1/4	1
19	10553	SHEAVE 2.5"OD X 2GR.A X 1"BORE	1
20	40317	KEY 1/4SQ X 1-5/8	1
21	65045	SHEAVE 4.05"OD X 2GR.A X SH	1
22	10505	BUSHING, SHEAVE SH X 1-1/4"BORE	1
23	10249	BELT AX-31	2

ILLUSTRATION 17: PROPANE ENGINE & FUEL CONVERSION KIT



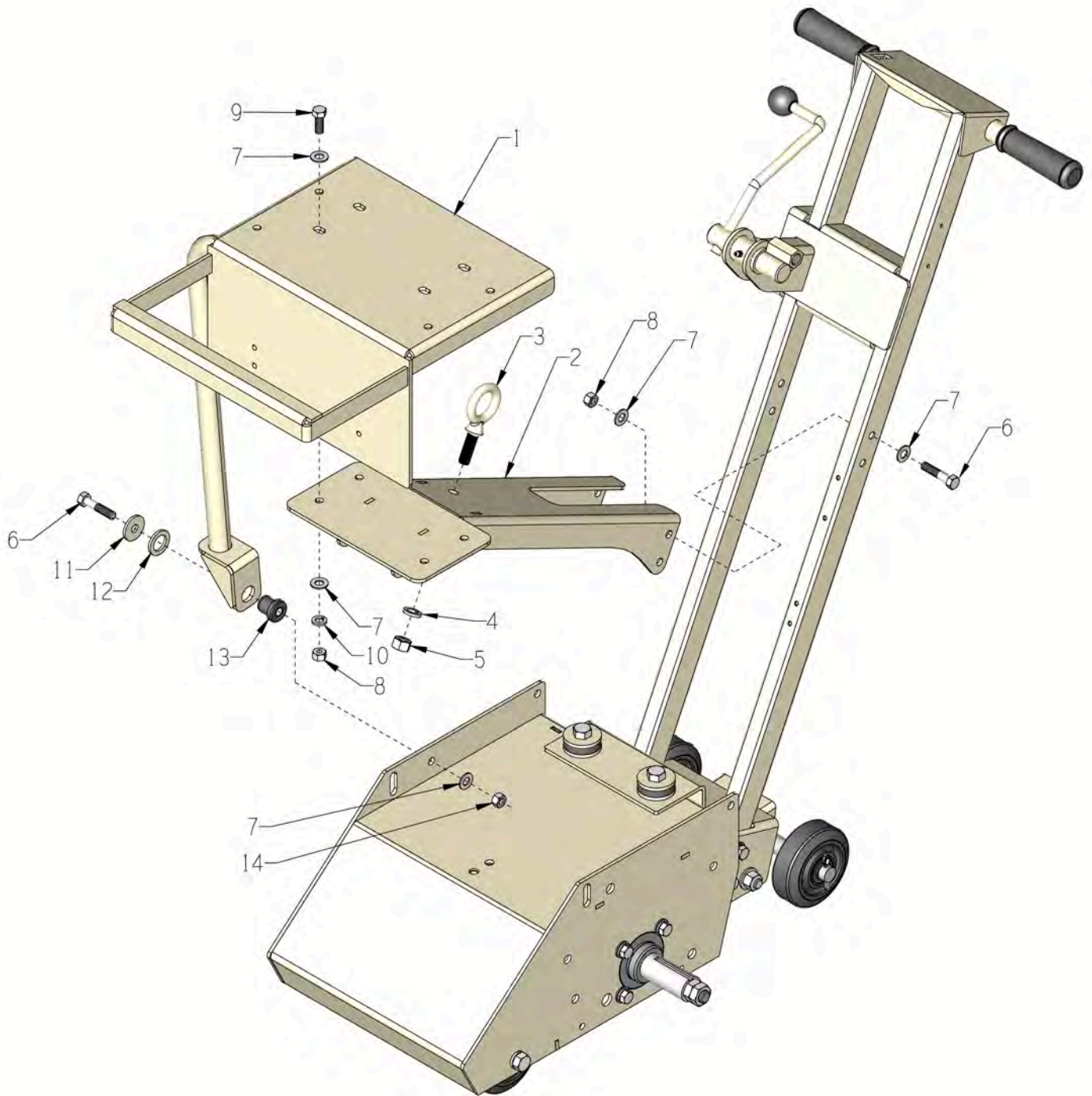
PARTS LISTING

ILLUSTRATION 17: PROPANE ENGINE & FUEL CONVERSION KIT

ITEM #	PART #	DESCRIPTION	QTY.
1	15095	ENGINE, 305CC VANGUARD PULL START (INCLUDES ALL ITEMS LISTED BELOW)	1
2	15095-1	MUFFLER, CATALYTIC BRIGGS 305CC	1
3	15095-21	GASKET, EXHAUST, CPM-8P	1
4	15095-2	KIT, FUEL CONVERSION 305CC	1
5	15095-5	REGULATOR, PROPANE	1
6	15095-6	VACUUM FUEL LOCK OFF, PROPANE	1
7	15095-7	PROPANE FUEL HOSE - LP 1/2 X 30"	1
8	15095-8	CLAMP, LP HOSE	2
9	15095-9	BARB ELBOW 90, 1/2" LP HOSE	1
10	15095-10	HOSE, VACUUM 3/16"ID X 36"L	1
11	15095-11	CLAMP, VACUUM HOSE	2
12	15095-12	BARB ELBOW 90, 3/16"HOSE X 1/8NPT	1
13	15095-13	BRASS FITTING 90° 3/8JIC X 1/4NPT	3
14	15095-14	PROPANE HOSE - HIGH PRESSURE 6"	1
15	15095-15	PROPANE HOSE - HIGH PRESSURE 12"	1
16	15095-3	QUICK DISCONNECT 1-1/4 LH ACME	1
17	15095-4	BRASS FITTING 45° 3/8JIC X 1/4NPT	1

MODEL CPM-8P

ILLUSTRATION 18: PROPANE TANK DECK GROUPING



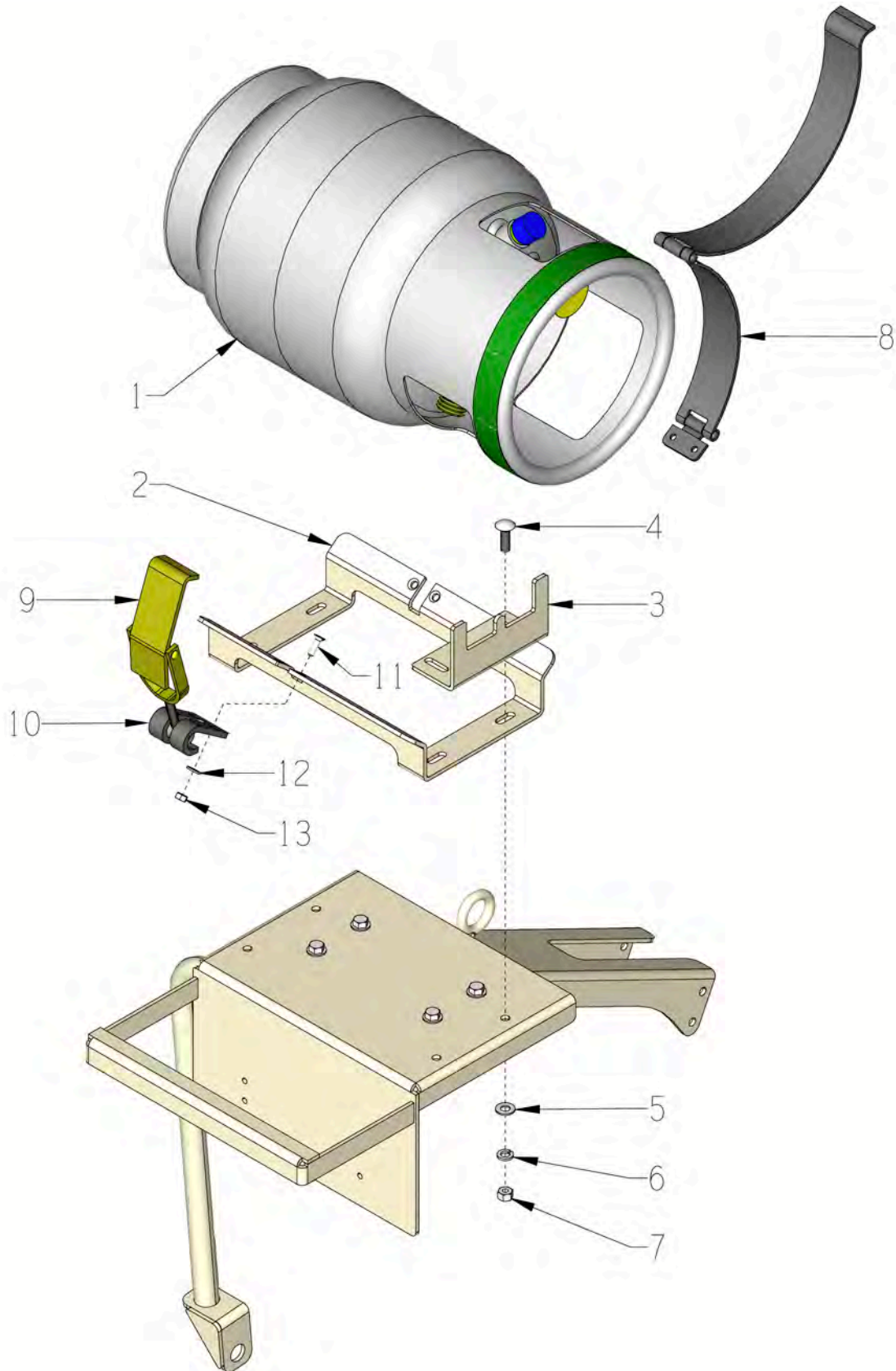
PARTS LISTING

ILLUSTRATION 18: PROPANE TANK DECK GROUPING

ITEM #	PART #	DESCRIPTION	QTY.
1	100420	PROPANE DECK, CPM-8P	1
2	100419	PROPANE DECK SUPPORT, CPM-8P	1
3	10837	BOLT, EYE 1/2-13 X 1-1/2	1
4	10312	WASHER, FLAT 1/2 SAE ZINC	1
5	10155	NUT, HEX NYLON LOCK 1/2-13 ZINC	1
6	10029	SCREW, CAP 3/8-24 X 1-3/4 ZINC	5
7	10025	WASHER, FLAT 3/8 SAE ZINC	17
8	10058	NUT, HEX LOCK 3/8-24 W/ NYLON PATCH	8
9	10021	SCREW, CAP 3/8-24 X 1 ZINC	4
10	10811	WASHER, LOCK 3/8 ZINC	4
11	72006	WASHER, 1-1/4OD X 13/32ID X 1/8THK	1
12	65119	WASHER 13/16 X 1-1/4 X 1/8	1
13	72007	MOUNT, CENTER BONDED, CB-1120-1	1
14	10004	NUT, HEX LOCK 3/8-24 ZINC	1

MODEL CPM-8P

ILLUSTRATION 19: PROPANE TANK GROUPING

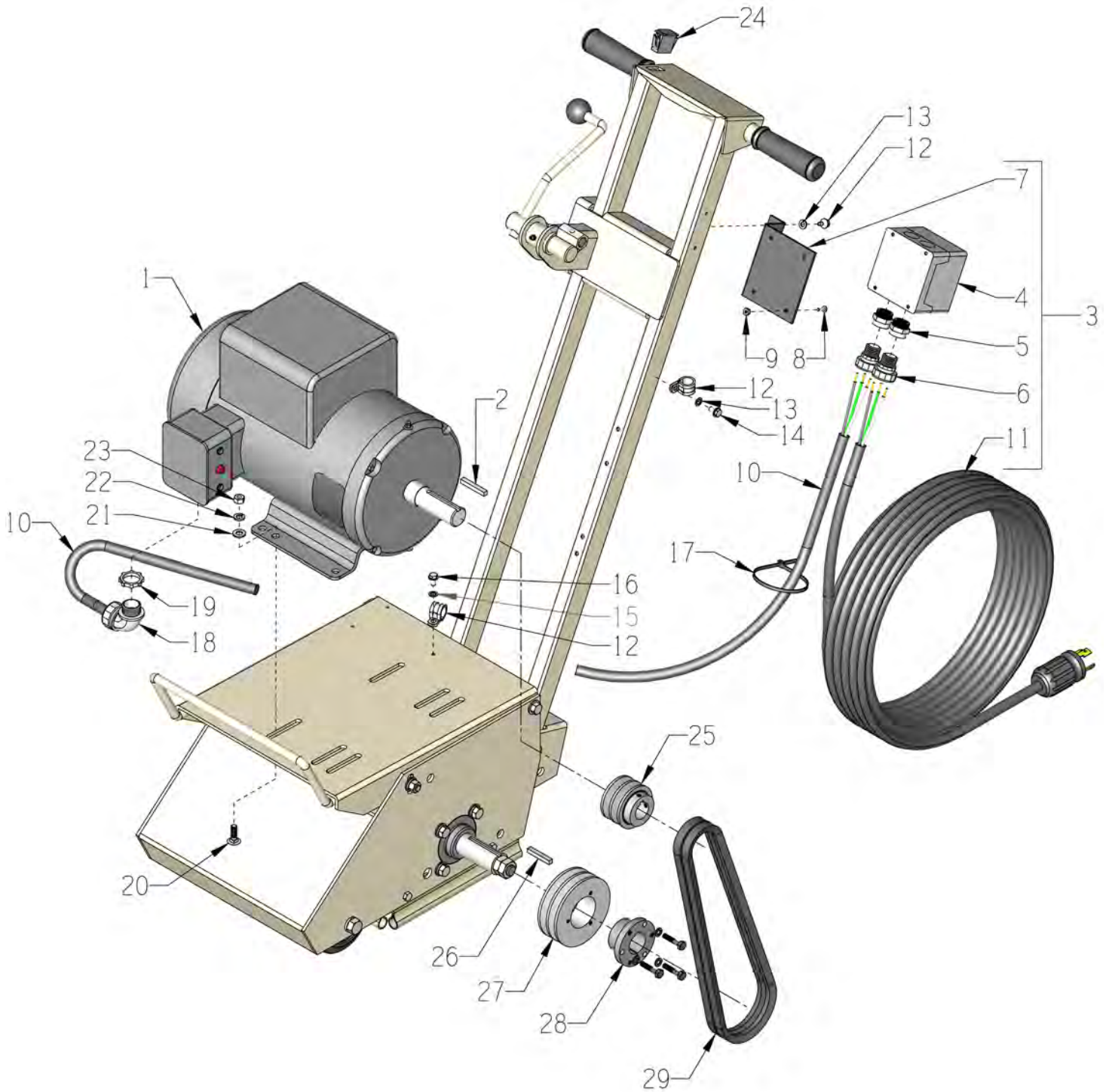


PARTS LISTING

ILLUSTRATION 19: PROPANE TANK GROUPING

ITEM #	PART #	DESCRIPTION	QTY.
1	15099	PROPANE TANK 20LB. VAPOR	1
2	100399	PROPANE TANK CRADLE BRACKET	1
3	101126	PROPANE TANK LOCATOR BRACKET	1
4	10320	BOLT, CARRIAGE 3/8-16 X 1-1/4	4
5	10025	WASHER, FLAT 3/8 SAE ZINC	4
6	10811	WASHER, LOCK 3/8 ZINC	4
7	10156	NUT, HEX NYLON LOCK 3/8-16 ZINC	4
8	77061-2	PROPANE TANK STRAP W/ HINGE	1
9	77061-4	PROPANE TANK TOGGLE CLAMP	1
10	77061-3	PROPANE TANK CLAW BRACKET	1
11	11661	SCREW, FLAT HD SLT 1/4-20 X 1	4
12	10602	WASHER, FLAT 1/4 SAE ZINC	4
13	10861	NUT, KEPS LOCK 1/4-20 ZINC	4

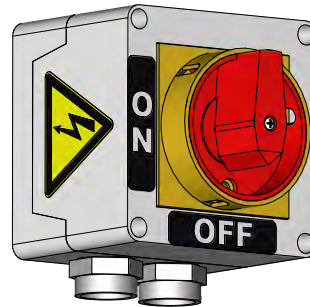
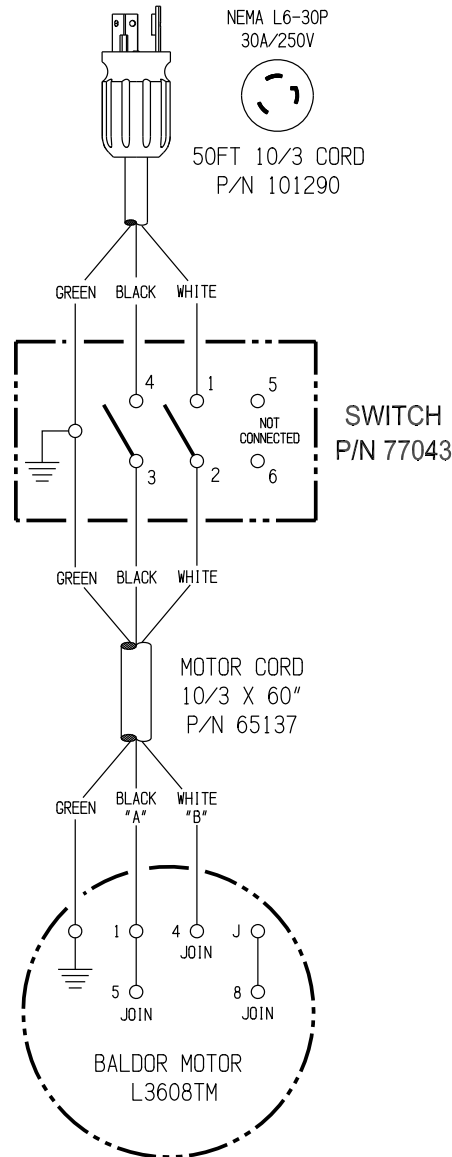
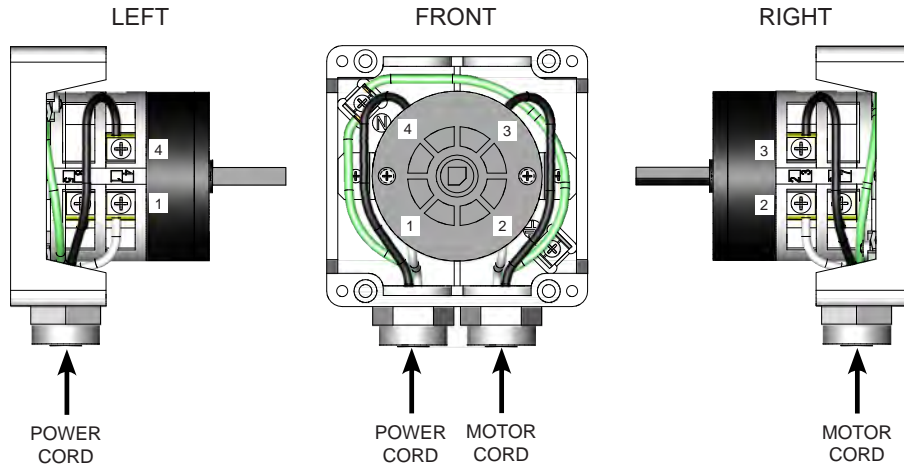
ILLUSTRATION 20: 5HP 1-PHASE MOTOR GROUPING



PARTS LISTING			
ILLUSTRATION 20: 5HP 1-PHASE MOTOR GROUPING			
ITEM #	PART #	DESCRIPTION	QTY.
1	81026	MOTOR, BALDOR 5HP-1PH 60HZ 3450RPM	1
	16121	<u>REPLACEMENT PARTS:</u> CAPACITOR, START, BALDOR EC1161C06	2
	16164	CAPACITOR, RUN, BALDOR #OC3040F 18SP	1
	16540	RESET BUTTON, BALDOR TPBRT25DB	1
2	-----	KEY 1/4"SQ. X 1-3/4 (INCLUDED W/ MOTOR)	1
3	100373	SWITCH ASSEMBLY, W/ CORDS, CPM8-5 (INCLUDES ITEMS 4 THRU 11)	1
4	77043	SWITCH, ROTARY CAM ON/OFF	1
	77043-2	<u>REPLACEMENT PARTS:</u> SWITCH HANDLE, PADLOCKABLE, LOVATO	1
	77043-4	GASKET RING, OPERATOR, LOVATO	1
5	77043-1	SWITCH ADAPTER, PG16 TO 1/2"NPT	2
6	41130	STRAIN RELIEF 1/2NPT X .550-.650"	2
7	77042	BRACKET, ROTARY CAM SWITCH	1
8	11663	SCREW, MACHINE 8-32 X 1/2 RHCD ZINC (LOCATED INSIDE OF SWITCH BOX)	4
9	10462	NUT, KEPS LOCK 8-32 ZINC	4
10	65137	WIRE HARNESS 10/3 X 60"LOA	1
11	101290	CORD 10/3 W/ PLUG, 50FT. 30A/250V	1
12	11565	CLAMP, LOOM, 5/8" (SAE SIZE 10)	2
13	10831	WASHER, LOCK, INT. TOOTH #10	2
14	10877	SCREW, CAP STSHW 10-24 X 1/2	2
15	10038	WASHER, LOCK 1/4 ZINC	2
16	10846	SCREW, CAP STSHW 1/4-20 X 5/8	2
17	10982	TIE, CABLE, BLACK NYLON 12"	1
18	16539	STRAIN RELIEF 90D X 3/4NPT .50-.625	1
19	10740	CONDUIT LOCK NUT 3/4 NP (LOCATED INSIDE OF JUNCTION BOX)	1
20	10819	BOLT, CARRIAGE 5/16-18 X 1	4
21	10213	WASHER, FLAT 5/16 SAE ZINC	4
22	10801	WASHER, LOCK 5/16 ZINC	4
23	10054	NUT, HEX 5/16-18 ZINC	4
24	15204	PLUG, RECT. HOLE, PLASTIC SNAP-IN	1
25	10555	SHEAVE 2.5"OD X 2GR.A X 1-1/8"BORE	1
26	40317	KEY 1/4SQ X 1-5/8	1
27	65045	SHEAVE 4.05"OD X 2GR.A X SH	1
28	10505	BUSHING, SHEAVE SH X 1-1/4"BORE	1
29	10239	BELT A-32	2

WIRING DIAGRAM FOR ROTARY CAM SWITCH

60HZ 1-PHASE 230V

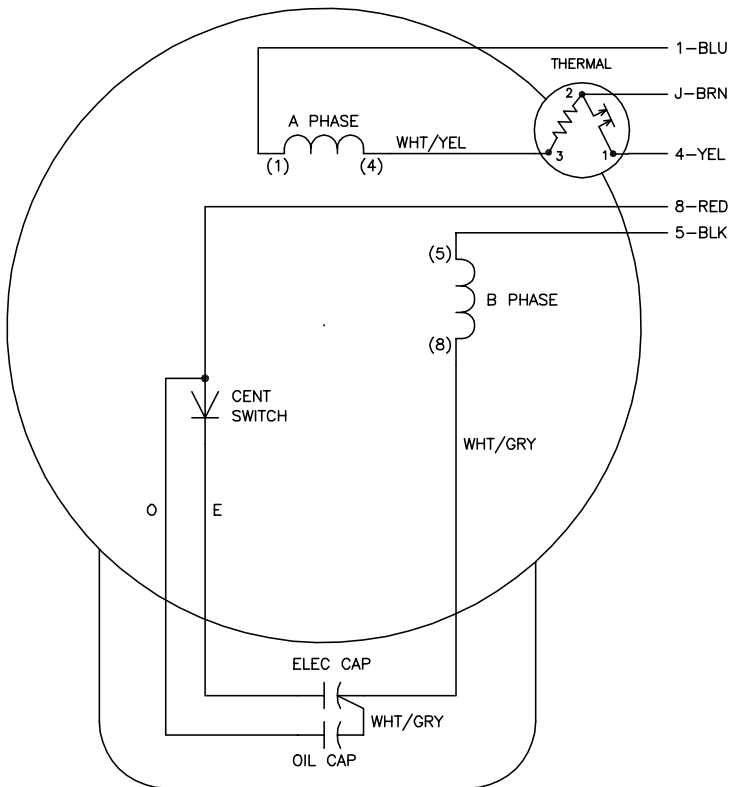


WIRING DIAGRAM FOR 60Hz 1-PHASE MOTOR

BALDOR CAT. NO. L3608TM
 5 H.P., 1 PHASE, 60 HERTZ, 3450 RPM,
 230 VOLT, 19.5 FULL LOAD AMPS

CD0002A02

USE CONNECTIONS FOR OPPOSITE ROTATION SHOWN BELOW
 LINE "A" IS BLACK WIRE, LINE "B" IS WHITE WIRE



	LINE A	LINE B	JOIN
STD	1,8	4	J,5
OPP	1,5	4	J,8

NOTES:

- STANDARD ROTATION IS CCW FACING END OPPOSITE SHAFT EXTENSION.
- MULTIPLE CAPACITORS ARE CONNECTED IN PARALLEL UNLESS OTHERWISE SPECIFIED.
- LEAD COLORS ARE OPTIONAL. LEADS MUST ALWAYS BE NUMBERED AS SHOWN.

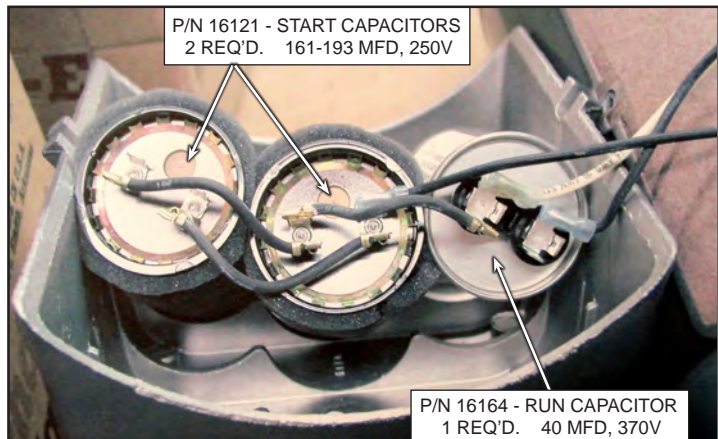
REV. DESC: REMOVE 2-TERMINAL THERMAL DETAIL, SEE CD0002A04		
REV. LTR: D	VERSION: 01	TDR: 00000360649
Z0VZ000D0	FILE: \AAA\00007\520	REVISED: 17:11:40 04/15/2005
	MTL: -	BY: ENJOEPO

BALDOR ELECTRIC Co.

TYPE LC, SV, REV, THERMAL, 5 LEADS

CD0002A02

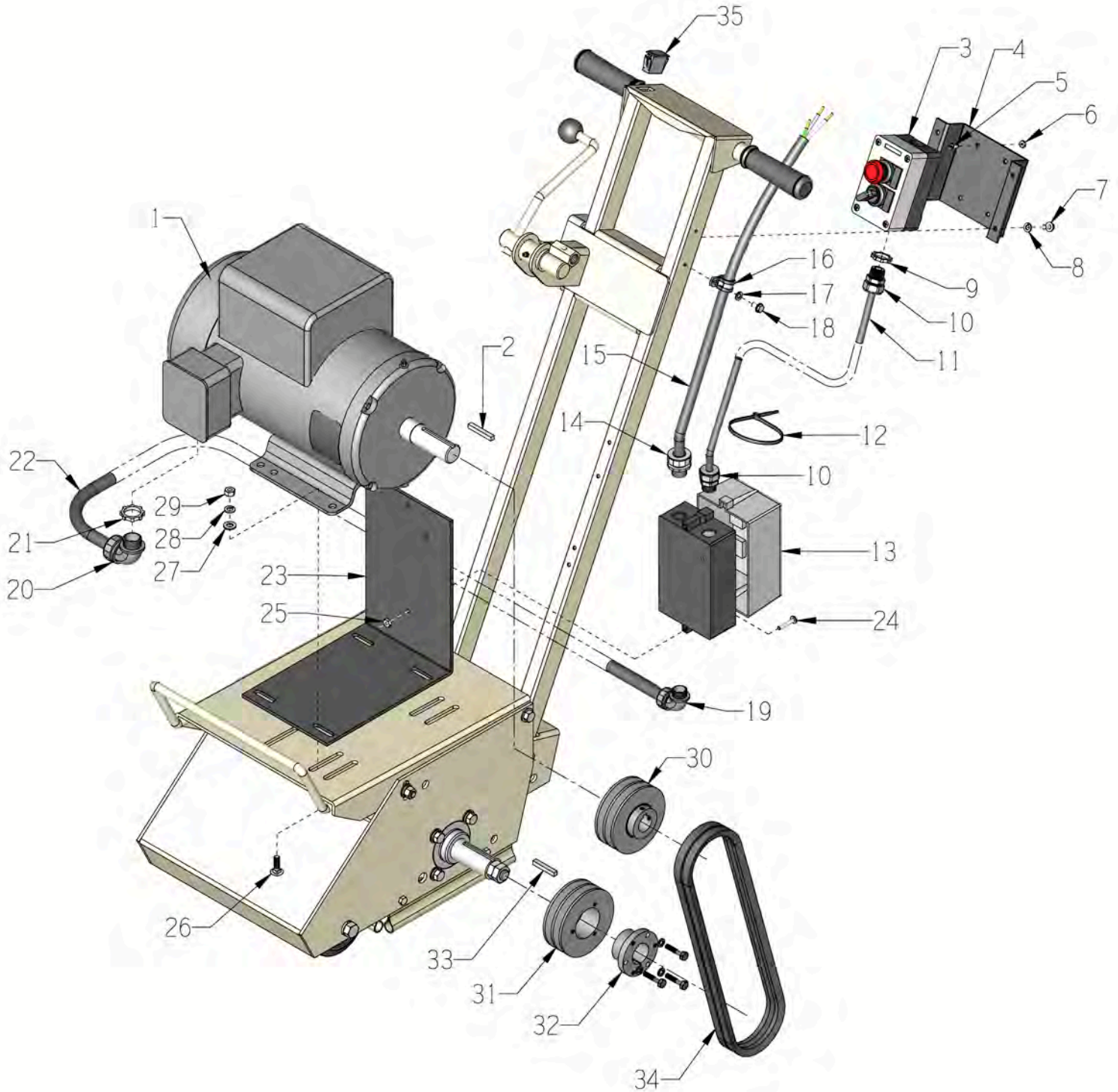
CAPACITOR WIRING DETAIL



Disconnect from power before removing the cover and handling the capacitors or touching the wires.

69600 MODEL CPM-8E

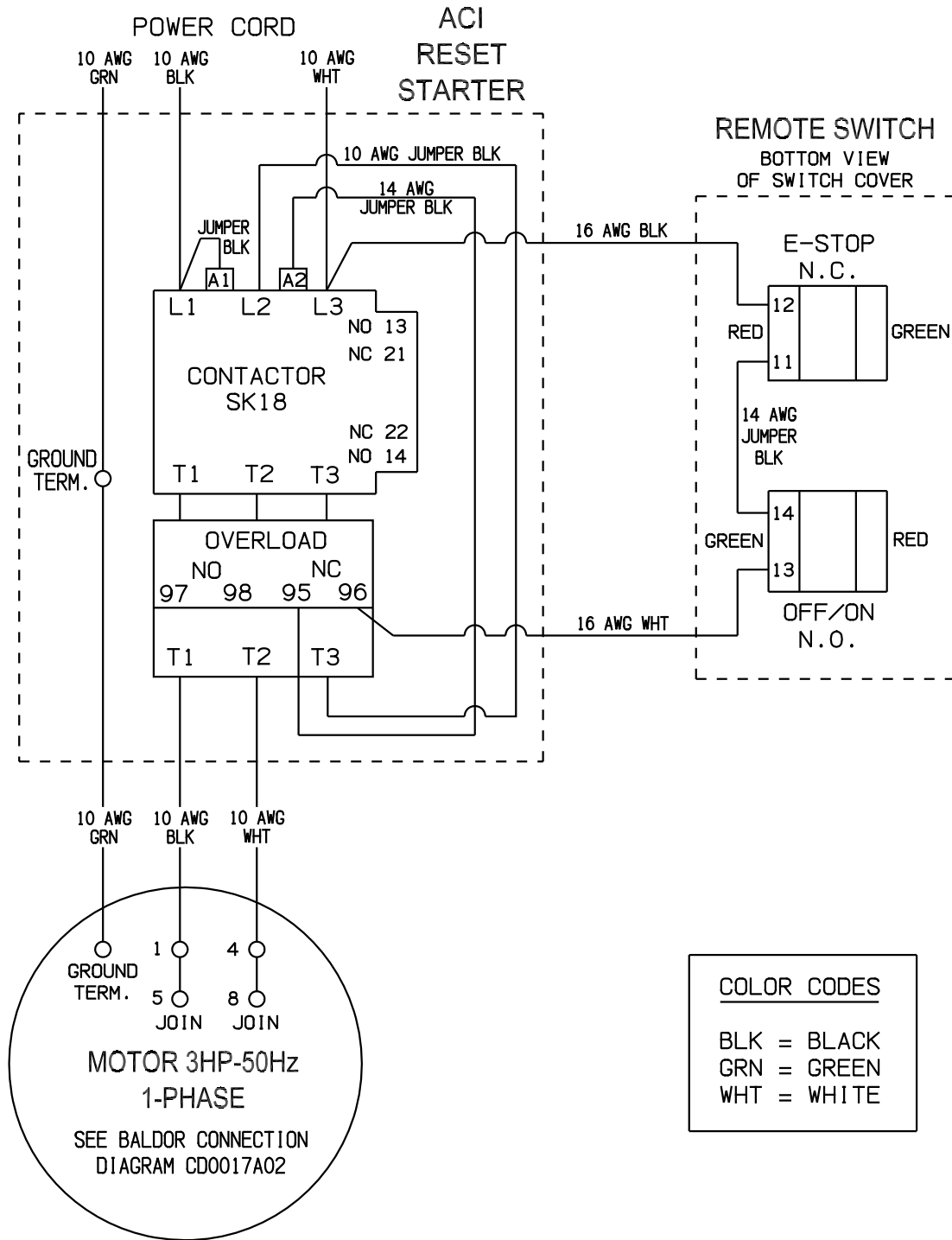
ILLUSTRATION 21: 3HP 1-PHASE 50Hz MOTOR GROUPING



PARTS LISTING - ILLUSTRATION 21: 3HP 1-PHASE 50Hz MOTOR GROUPING			
ITEM #	PART #	DESCRIPTION	QTY.
1	16059	MOTOR, BALDOR 3HP-1PH 50HZ 1425RPM	1
	16059-3	REPLACEMENT PARTS: CAPACITOR, START BALDOR EC1540A06SP	1
	16059-2	CAPACITOR, RUN, BALDOR OC3060C09SP	1
2	-----	KEY 1/4"SQ X 1-3/4 (INCLUDED W/ MOTOR)	1
3	16660	SWITCH BOX COMPLETE, ON/OFF/E-STOP (SEE ILLUS. 22 FOR REPLACEMENT PARTS)	1
4	65088	BRACKET, REMOTE SWITCH, CPM-8	1
5	11663	SCREW, MACHINE 8-32 X 1/2 RHCD ZINC	4
6	10462	NUT, KEPS LOCK 8-32 ZINC	4
7	10846	SCREW, CAP STSHW 1/4-20 X 1/2	4
8	10038	WASHER, LOCK 1/4 ZINC	4
9	10790	CONDUIT LOCK NUT 1/2 NP (LOCATED INSIDE BOX)	1
10	16190	STRAIN RELIEF 1/2NPT X .250-.350"	2
11	65140	WIRE HARNESS 16/2 X 48"LOA	1
12	10982	TIE, CABLE, BLACK NYLON 12"	3
13	16604	STARTER ACI #128844 RESET ONLY 200/240V COIL 11.3-16A O/L (SEE ILLUS. 23 FOR REPLACEMENT PARTS)	1
14	41053	STRAIN RELIEF 1/2NPT X .625-.750"	1
15	101438	WIRE HARNESS 12/3 300V X 50"LOA	1
16	11565	CLAMP, LOOM, 5/8" (SAE SIZE 10)	1
17	10831	WASHER, LOCK, INT. TOOTH #10	1
18	10877	SCREW, CAP STSHW 10-24 X 1/2	1
19	11621	STRAIN RELIEF 90D X 1/2NPT .625-.75	1
20	16539	STRAIN RELIEF 90D X 3/4NPT .50-.625	1
21	10740	CONDUIT LOCK NUT 3/4 NP (LOCATED INSIDE BOX)	1
22	101439	WIRE HARNESS 12/3 300V X 34"LOA	1
23	65087	MOUNT, STARTER, CPM-8/10 DS-18	1
24	11732	SCREW, MACHINE 10-32 X 1-3/4 RPH	2
	10384	SCREW, MACHINE 10-32 X 1 RHP	1
25	10832	NUT, KEPS LOCK 10-32 ZINC	3
26	10820	BOLT, CARRIAGE 5/16-18 X 1-1/4	4
27	10213	WASHER, FLAT 5/16 SAE ZINC	4
28	10801	WASHER, LOCK 5/16 ZINC	4
29	10054	NUT, HEX 5/16-18 ZINC	4
30	65134	SHEAVE 4.0"OD X 2GR.A X 1-1/8"BORE	1
31	65045	SHEAVE 4.05"OD X 2GR.A X SH	1
32	10505	BUSHING, SHEAVE SH X 1-1/4"BORE	1
33	40317	KEY 1/4SQ X 1-5/8	1
34	81007	BELT AX-33	2
35	15204	PLUG, RECT. HOLE, PLASTIC SNAP-IN	1

69600 MODEL CPM-8E

WIRING DIAGRAM FOR STARTER & REMOTE SWITCH



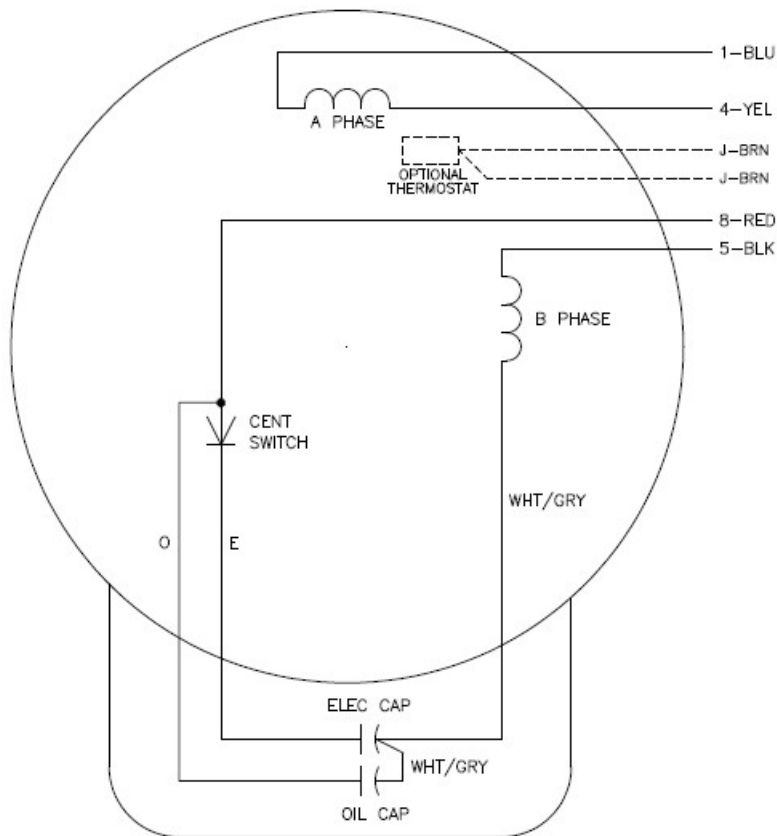
69600 MODEL CPM-8E

WIRING DIAGRAM FOR 3HP 1-PHASE 50Hz MOTOR

BALDOR CAT. NO. L3609T-50
 3 H.P., 1 PHASE, 50 HERTZ, 1440 RPM,
 220 VOLT, 12.0 FULL LOAD AMPS

USE CONNECTIONS FOR OPPOSITE ROTATION SHOWN BELOW
 LINE "A" IS BLACK WIRE, LINE "B" IS WHITE WIRE

CD0017A02



	LINE A	LINE B
STD	1,8	4,5
OPP	1,5	4,8

NOTES:

1. STANDARD ROTATION IS CCW FACING END OPPOSITE SHAFT EXTENSION.
2. OPTIONAL THERMOSTAT IS PROVIDED WHEN SPECIFIED.
3. MULTIPLE CAPACITORS ARE CONNECTED IN PARALLEL UNLESS OTHERWISE SPECIFIED.
4. LEAD COLORS ARE OPTIONAL. LEADS MUST ALWAYS BE NUMBERED AS SHOWN.

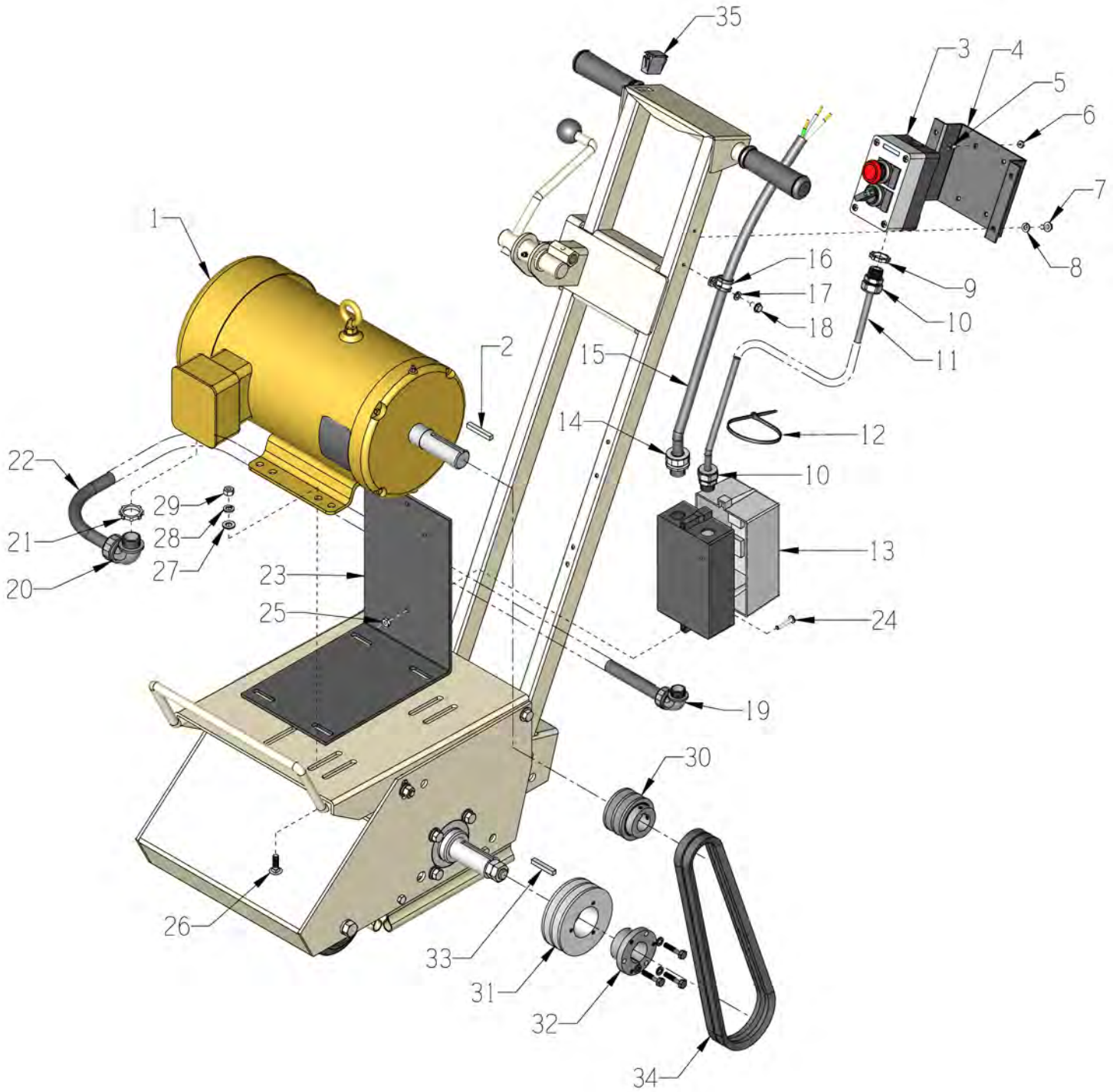
REV. DESC: REVISE TO SHOW OPTIONAL COLORS			
REV. LTR: B	BY: JLP	REVISED: 04/09/99 11:30	TDR: 0178636
Z0VZ10000		FILE: AAA00007514	MDL: -
CD0017A02		MTL: -	

BALDOR ELECTRIC Co.

TYPE LC, SV, REV, 4 LEADS

CD0017A02

ILLUSTRATION 22: 5HP 3-PHASE MOTOR GROUPING

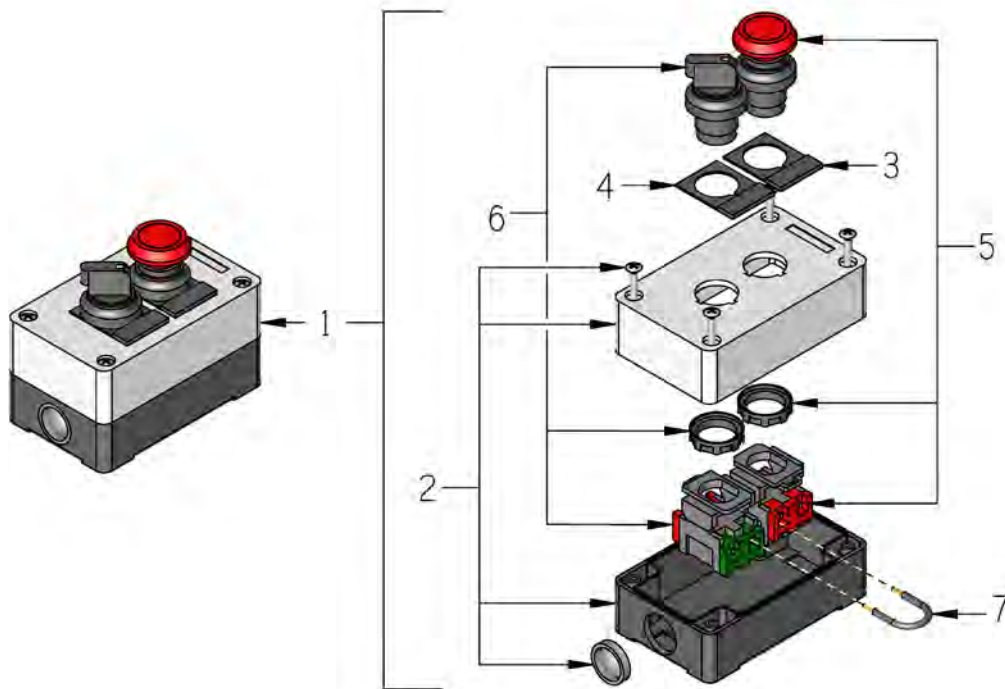


PARTS LISTING - ILLUSTRATION 22: 5HP 3-PHASE MOTOR GROUPING			
ITEM #	PART #	DESCRIPTION	QTY.
1	81022	MOTOR, BALDOR 5HP-3PH-60HZ-230/460V	1
	16020	MOTOR, BALDOR 5HP-3PH-50HZ-230/400V	1
2	-----	KEY 1/4"SQ X 1-3/4 (INCLUDED W/ MOTOR)	1
3	16660	SWITCH BOX COMPLETE, ON/OFF/E-STOP (SEE ILLUS. 22 FOR REPLACEMENT PARTS)	1
4	65088	BRACKET, REMOTE SWITCH, CPM-8	1
5	11663	SCREW, MACHINE 8-32 X 1/2 RHCD ZINC	4
6	10462	NUT, KEPS LOCK 8-32 ZINC	4
7	10846	SCREW, CAP STSHW 1/4-20 X 1/2	4
8	10038	WASHER, LOCK 1/4 ZINC	4
9	10790	CONDUIT LOCK NUT 1/2 NP (LOCATED INSIDE BOX)	1
10	16190	STRAIN RELIEF 1/2NPT X .250-.350"	2
11	65140	WIRE HARNESS 16/2 X 48"LOA	1
12	10982	TIE, CABLE, BLACK NYLON 12"	3
13		STARTER, ACI RESET ONLY (SEE ILLUS. 23 FOR REPLACEMENT PARTS)	
	16604	STARTER ACI #128844 200/240V COIL 11.3-16A O/L	1
	16458	STARTER ACI #128846 440/480V COIL 5.5-7.5A O/L	1
	16459	STARTER ACI #128849 440/480V COIL 7.2-10.0A O/L	1
14	41053	STRAIN RELIEF 1/2NPT X .625-.750"	1
15	65105	WIRE HARNESS 10/4 X 50"LOA	1
16	11565	CLAMP, LOOM, 5/8" (SAE SIZE 10)	1
17	10831	WASHER, LOCK, INT. TOOTH #10	1
18	10877	SCREW, CAP STSHW 10-24 X 1/2	1
19	11621	STRAIN RELIEF 90D X 1/2NPT .625-.75	1
20	16539	STRAIN RELIEF 90D X 3/4NPT .50-.625	1
21	10740	CONDUIT LOCK NUT 3/4 NP (LOCATED INSIDE BOX)	1
22	65108	WIRE HARNESS 10/4 X 34"LOA	1
23	65087	MOUNT, STARTER, CPM-8/10 DS-18	1
24	11732	SCREW, MACHINE 10-32 X 1-3/4 RPH	2
	10384	SCREW, MACHINE 10-32 X 1 RHP	1
25	10832	NUT, KEPS LOCK 10-32 ZINC	3
26	10820	BOLT, CARRIAGE 5/16-18 X 1-1/4	4
27	10213	WASHER, FLAT 5/16 SAE ZINC	4
28	10801	WASHER, LOCK 5/16 ZINC	4
29	10054	NUT, HEX 5/16-18 ZINC	4
30	10555	SHEAVE 2.5"OD X 2GR.A X 1-1/8"BORE (60Hz MOTOR)	1
	10526	SHEAVE 3.0"OD X 2GR.A X 1-1/8"BORE (50Hz MOTOR)	1
31	65045	SHEAVE 4.05"OD X 2GR.A X SH	1
32	10505	BUSHING, SHEAVE SH X 1-1/4"BORE	1
33	40317	KEY 1/4SQ X 1-5/8	1
34	10239	BELT A-32	2
35	15204	PLUG, RECT. HOLE, PLASTIC SNAP-IN	1

ILLUSTRATION 22: SWITCH ASSEMBLY

P/N 16660

REPLACEMENT PARTS



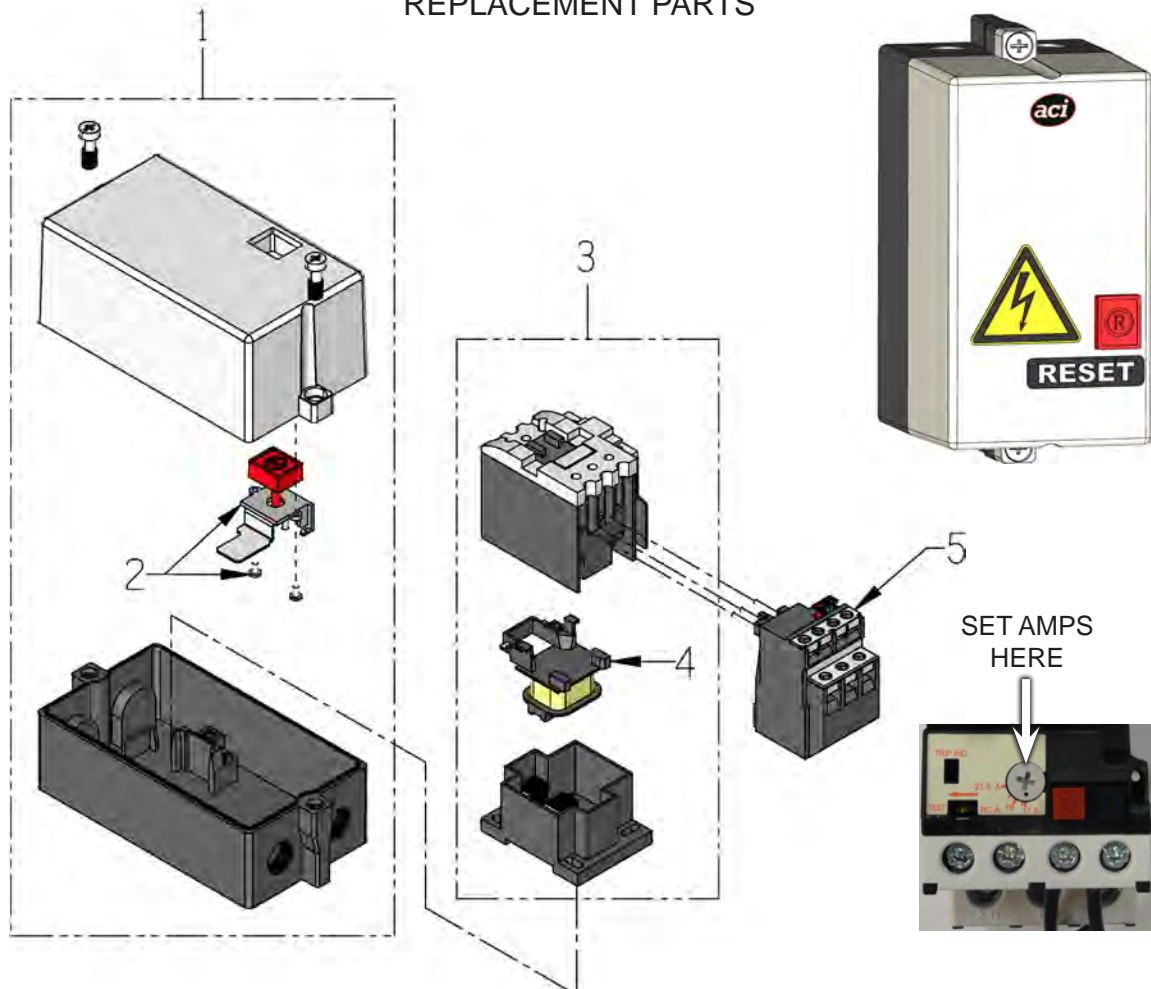
ITEM #	PART #	DESCRIPTION	QTY.
1	16660	SWITCH BOX COMPLETE, ON/OFF/E-STOP (INCLUDES ITEMS 2 THRU 7)	1
2	16661	ENCLOSURE, 2 HOLE ACI PBE2	1
3	16662	LEGEND PLATE, EMER.STOP	1
4	16663	LEGEND PLATE, OFF/ON	1
5	16664	MUSHROOM BUTTON, RED, 1NO+1NC CONT. (INCLUDES CONTACT BLOCK)	1
6	16665	KNOB TYPE SELECTOR SWITCH, BLACK (INCLUDES CONTACT BLOCK)	1
7	16666	WIRE, BLACK JUMPER 14 AWG X 3"	1

69600, 79400 & 79400-50 MODEL CPM-8E

**ILLUSTRATION 23:
ADVANCE CONTROLS, INC. (aci) BRAND
RESET STARTER ASSEMBLY**

P/N 16604, 16458 & 16459

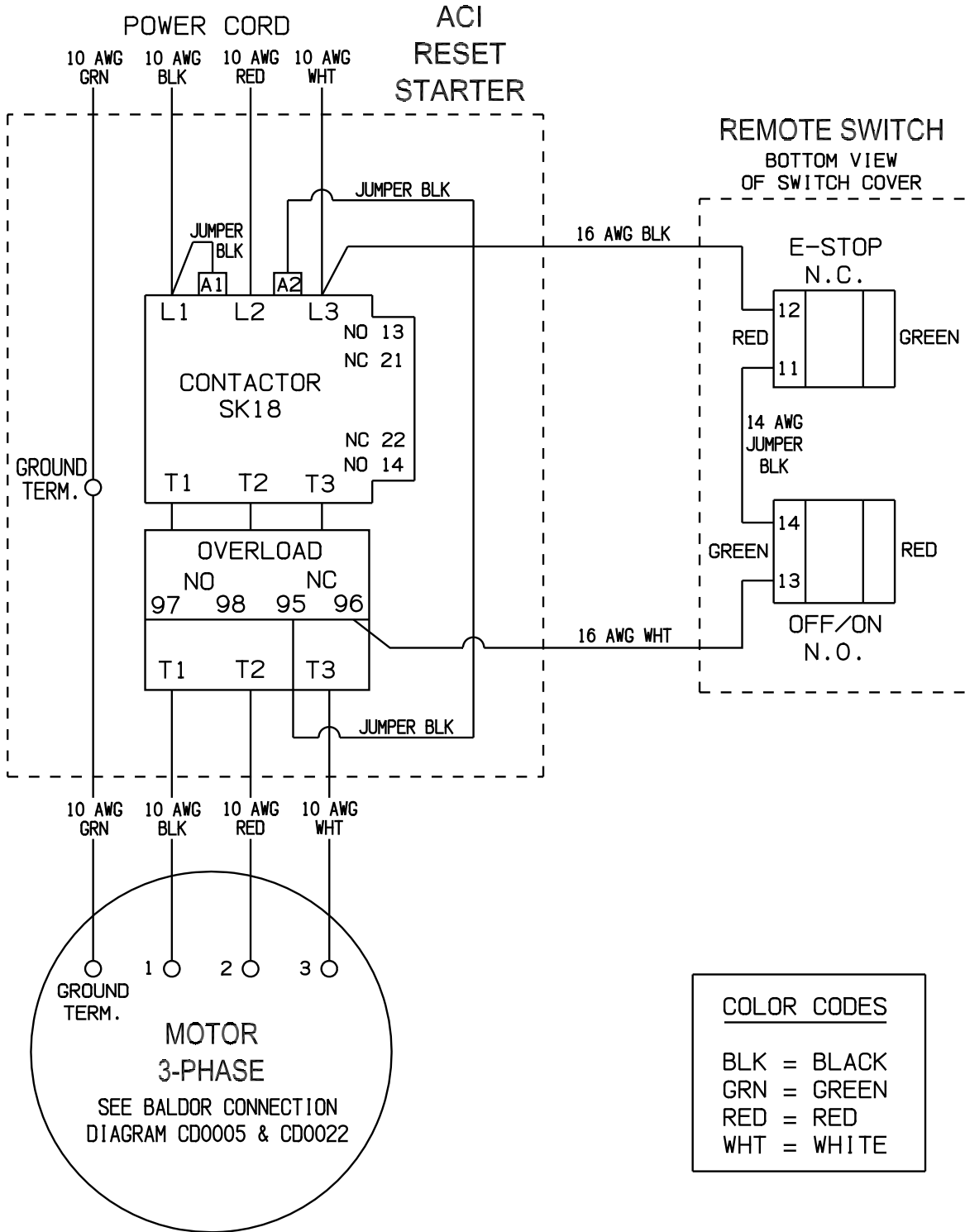
REPLACEMENT PARTS



ITEM #	PART #	DESCRIPTION	QTY.
1	16653	STARTER BOX ONLY, RESET (INCLUDES ITEM 2)	1
2	16655	STOP/RESET PUSHBUTTON ASSY., RED	1
3	16617 16618	CONTACTOR WITH COIL (INCLUDES ITEM 4): STARTER CONT./COIL ACI SK18.310-230 (230V) STARTER CONT./COIL ACI SK18.310-460 (460V)	1
4	16622 16623	STARTER AC COIL ONLY: AC COIL 200/240V-60HZ (230V) AC COIL 440/480V-60HZ (460V)	1
5	16635 16632 16633	STARTER OVERLOAD RELAY: O/L RELAY 10.3-16.0 AMP (220/230V - SET @13AMPS) O/L RELAY 5.5 - 7.5 AMP (460V - SET @ 7AMPS) O/L RELAY 7.2 - 10.0 AMP (50Hz - 380V)	1

79400 & 79400-50 MODEL CPM-8E

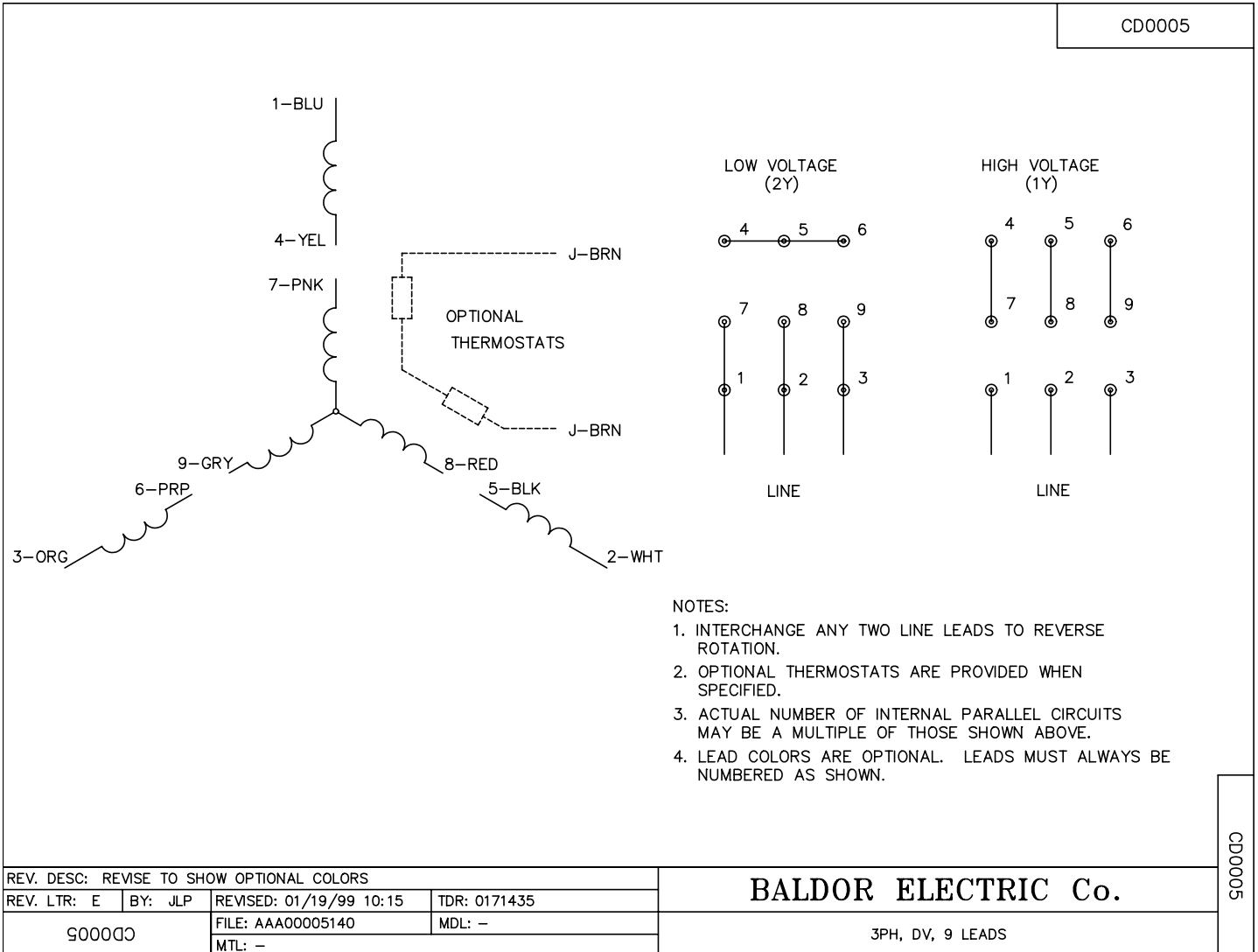
WIRING DIAGRAM FOR STARTER & REMOTE SWITCH



79400 MODEL CPM-8E

WIRING DIAGRAM FOR 60Hz 3-PHASE MOTOR

BALDOR CAT. NO. EM3613T
 5 H.P., 3 PHASE, 60 HERTZ,
 230/460 VOLTS, 11.6/5.8 FULL LOAD AMPS

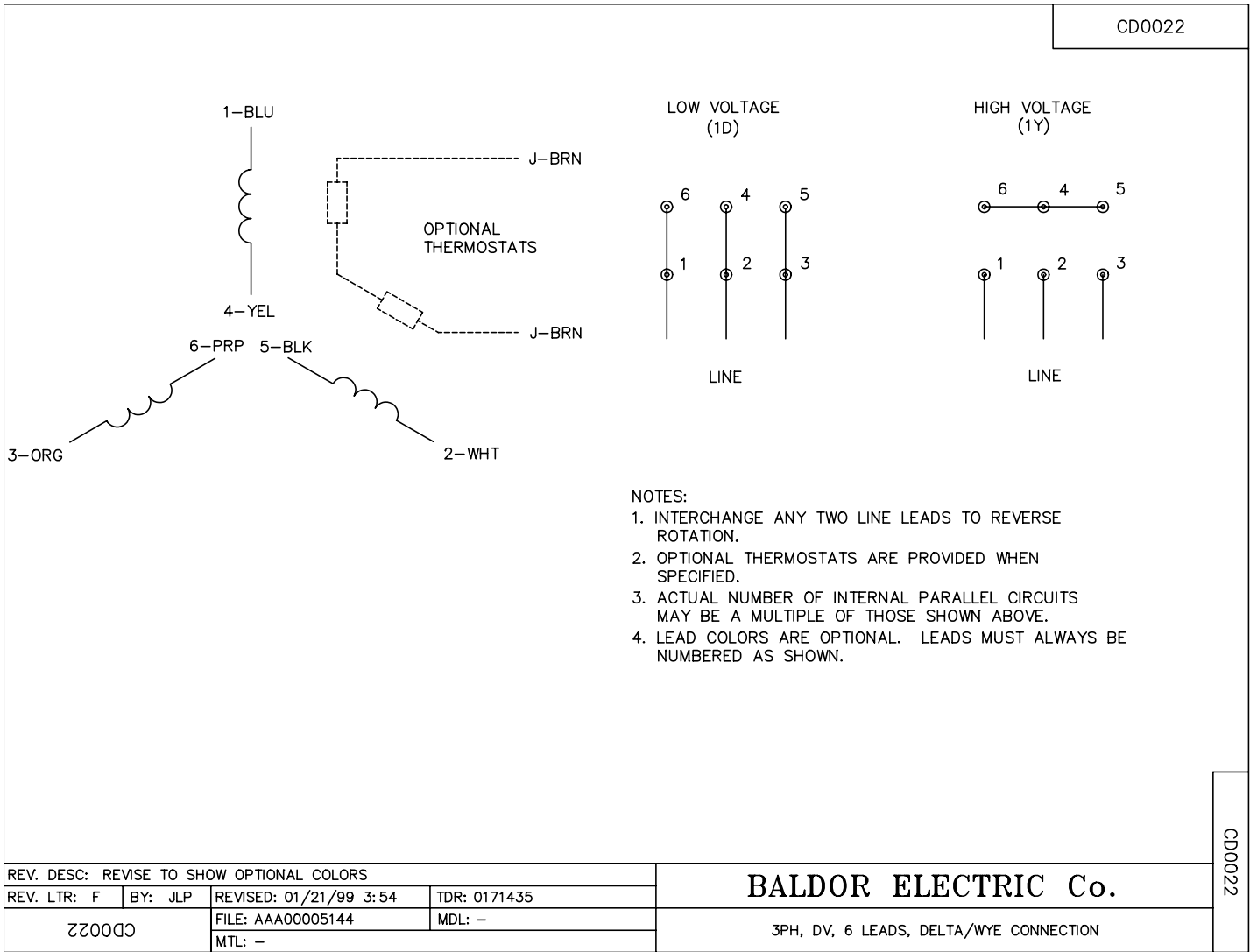


79400-50 MODEL CPM-8E

WIRING DIAGRAM FOR 50Hz 3-PHASE MOTOR

BALDOR CAT. NO. EM3613T-57
 5 H.P., 3 PHASE, 50 HERTZ,
 230/400VOLTS, 11.2/6.4 FULL LOAD AMPS

CD0022



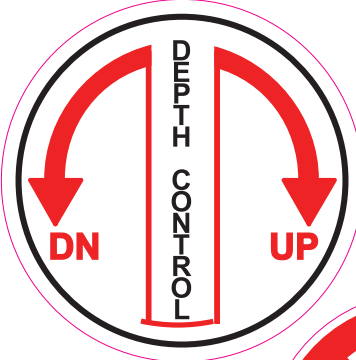
THIS PAGE WAS LEFT BLANK INTENTIONALLY

DECAL SHEET

P/N 92204 Rev.H CPM-4/8/10 & CPL-8 14 x17



WARNING: Cancer and Reproductive Harm. For more information, go to www.P65Warnings.ca.gov



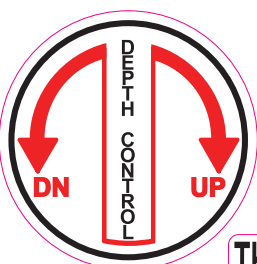
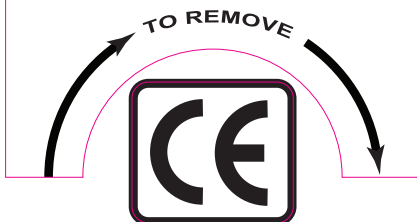
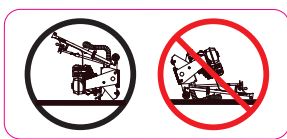
WARNING THERE IS NO OIL IN THIS MACHINE

DO NOT USE IMPACT TOOLS TO TIGHTEN LEFT HAND THREADS



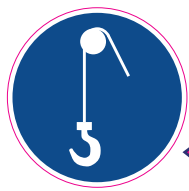
CHECK OIL DAILY

exceeds 85dBA



CAUTION GENERATOR SIZE REQUIREMENT RATE GENERATOR AT 3 TIMES MOTOR RATED HORSEPOWER

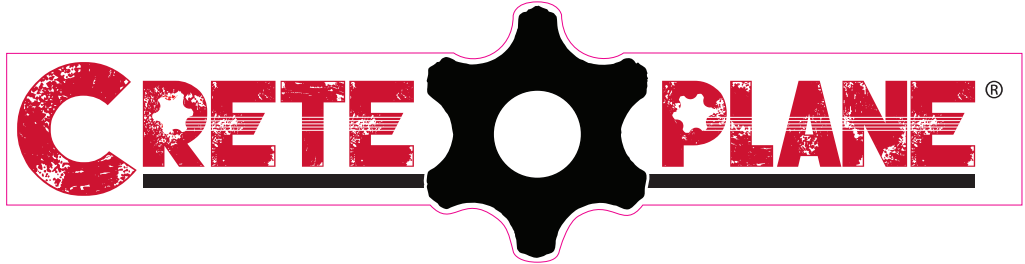
For OSHA Silica Compliance use with EDCC Vacuum



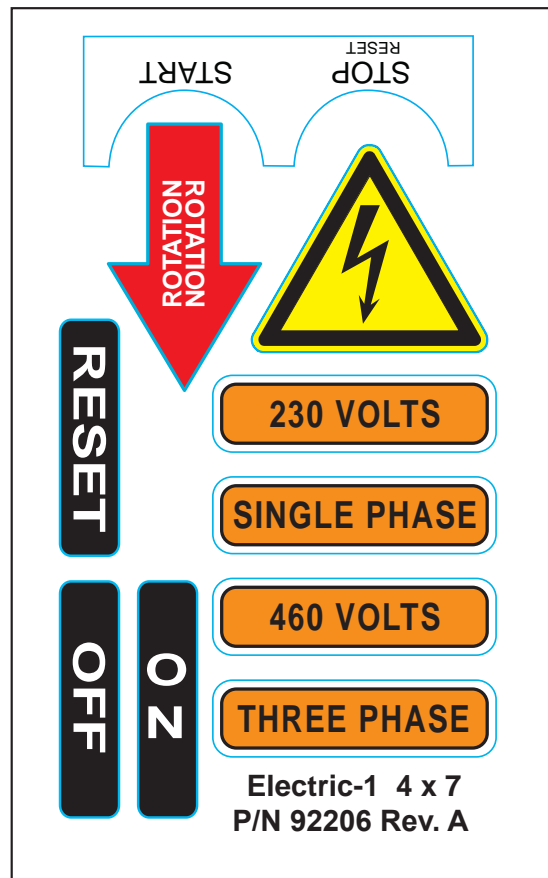
GREASE BEARINGS DAILY



RENTAL-TOUGH



DECALS CONTINUED



**IMPORTANT NOTE
MOTOR MANUAL RESET
DECAL P/N 91332**

P/N 91332

IMPORTANT NOTE:
Make sure the ON/OFF power switch is in the **OFF** position before pressing the reset button on the motor. Failure to do so could cause bodily harm and damage to the machine and/or work surface.

IMPORTANT NOTE:
Make sure the ON/OFF power switch is in the **OFF** position before pressing the reset button on the motor. Failure to do so could cause bodily harm and damage to the machine and/or work surface.

NOTE:
Locate this decal so it is visible, close to and pointing at the **MANUAL RESET** button located on the motor

**IMPORTANT NOTE
STARTER MANUAL RESET
DECAL P/N 91333**

P/N 91333

IMPORTANT NOTE:
Make sure the ON/OFF power switch is in the **OFF** position before pressing the reset button on starter box. Failure to do so could cause bodily harm and damage to the machine and/or work surface.

IMPORTANT NOTE:
Make sure the ON/OFF power switch is in the **OFF** position before pressing the reset button on starter box. Failure to do so could cause bodily harm and damage to the machine and/or work surface.

NOTE:
Locate this decal so it is visible, close to and pointing at the **MANUAL RESET** button located on starter box

THIS PAGE WAS LEFT BLANK INTENTIONALLY

LIMITED EQUIPMENT WARRANTY OF SALE

Equipment Development Company, Inc. herein referred to as EDCO (Seller) warrants that each new unit manufactured by EDCO to be free from defects in material and workmanship in normal use and service for a period of (1) one year (except for the cutter drum assembly on all model concrete/asphalt planers AND the chisel head assembly on all model ALR's & ALR-BS in which case the warranty period shall be 90 days) from date of shipment to the original retail or equipment rental center owner.

Accessories or equipment furnished and installed on the product by EDCO but manufactured by others, including, but not limited to engines, motors, electrical components, transmissions etc., shall carry the accessory manufacturers own warranty.

EDCO will, at its option, repair or replace, at the EDCO factory or at a point designated by EDCO, any part which shall appear to the satisfaction of EDCO inspection to have been defective in material or workmanship.

EDCO reserves the right to modify, alter and improve any part or parts without incurring any obligation to replace any part or parts previously sold without such modified, altered or improved part or parts.

This warranty is in lieu of and excludes all other warranties, expressed, implied, statutory, or otherwise created under applicable law including, but not limited to the warranty of merchantability and the warranty of fitness for a particular purpose in no event shall seller or the manufacturer of the product be liable for special, incidental, or consequential damages, including loss of profits, whether or not caused by or resulting from the negligence of seller and/or the manufacturer of the product unless specifically provided herein. In addition, this warranty shall not apply to any products or portions thereof which have been subjected to abuse, misuse, improper installation, maintenance, or operation, electrical failure or abnormal conditions and to products which have been tampered with, altered, modified, repaired, reworked by anyone not approved by seller or used in any manner inconsistent with the provisions of the above or any instructions or specifications provided with or for the product.

TERMS AND CONDITIONS

(NOT APPLICABLE TO SALES THROUGH AUTHORIZED DISTRIBUTION)

FORCE MAJEURE

Seller's obligation hereunder are subject to, and Seller shall not be held responsible for, any delay or failure to make delivery of all or any part of the Product due to labor difficulties, fires, casualties, accidents, acts of the elements, acts of God, transportation difficulties, delays by a common carrier, inability to obtain Product, materials or components or qualified labor sufficient to timely perform part of or all of the obligations contained in these terms and conditions, governmental regulations or actions, strikes, damage to or destruction in whole or part of manufacturing plant, riots, terrorist attacks or incidents, civil commotions, warlike conditions, flood, tidal waves, typhoon, hurricane, earthquake, lightning, explosion or any other causes, contingencies or circumstances within or without the United States not subject to the Seller's control which prevent or hinder the manufacture or delivery of the Products or make the fulfillment of these terms and conditions impracticable. In the event of the occurrence of any of the foregoing, at the option of Seller, Seller shall be excused from the performance under these Terms and Conditions, or the performance of the Seller shall be correspondingly extended.

This document sets forth the terms and conditions pursuant to which the purchaser ("Purchaser") will purchase and Equipment Development Co. Inc. ("Seller") will sell the products, accessories, attachments (collectively the Products) ordered by the Purchaser. These terms and conditions shall govern and apply to the sale of Seller's Products to Purchaser, regardless of any terms and conditions appearing on any purchase order or other forms submitted by Purchaser to Seller, or the inconsistency of any terms therein and herein.

1. PRICE

All prices set forth on any purchase order or other document are F.O.B. Sellers facility or distribution point, as may be determined by Seller (F.O.B. Point). All prices are exclusive of any and all taxes, including, but not limited to, excise, sales, use, property or transportation taxes related to the sale or use of the Products, now or hereafter imposed, together with all penalties and expenses. Purchaser shall be responsible for collecting and/or paying any and all such taxes, whether or not they are stated in any invoice for the Products. Unless otherwise specified herein, all prices are exclusive of inland transportation, freight, insurance and other costs and expenses relating to the shipment of the Products from the F.O.B. point to Purchaser's facility. Any prepayment by Seller of freight insurance and other costs shall be for the account of Purchaser and shall be repaid to Seller.

2. PAYMENT TERMS

Payment terms are as follows. 2% 10 days (to approved and qualified accounts). Net 30 days. This is a cash discount for invoices paid within 10 days after the invoice date, regardless of date of receipt of shipment. This is not a trade discount and will not be granted to accounts that do not adhere to stated terms.

*All past due accounts are subject to a late payment fee of 1.5% per month or a maximum allowed by law if different, along with the expenses incidental to collection including reasonable attorney's fees and costs.

*Seller reserves the right to hold shipments against past due accounts.

*Seller reserves the right to alter payment terms.

3. FREIGHT TERMS

All shipments will be made F.O.B. shipping point as designated in these Terms and Conditions, and title shall pass at the F.O.B. point. Delivery to the initial common carrier shall constitute delivery to the Purchaser. Any claims for loss or damage during shipment are to be filed with carrier by the Purchaser. Seller will not assume responsibility for the performance of the carrier.

Back orders will be shipped in the most practical fashion with charges consistent with our freight policy established with the original order. UPS, FED EX, MAIL or shipments by other couriers are subject to the same terms and conditions as outlined in paragraph #3 "Freight Terms".

4. DELIVERY, DAMAGES, SHORTAGES

Seller shall use reasonable efforts to attempt to cause the Products to be delivered as provided for in these Terms & Conditions. Delivery to the initial common carrier shall constitute the delivery to the Purchaser. Seller's responsibility, in so far as transportation risks are concerned ceases upon the delivery of the Products in good condition to such carrier at the F.O.B. point and all the Products shall be shipped at the Purchaser's risk. Seller shall not be responsible or liable for any loss of income and/or profits, or incidental, special, consequential damages resulting from Seller's delayed performance in shipment and delivery.

5. RETURN OF DEFECTIVE PRODUCTS

Defective or failed material shall be held at the Purchaser's premises until authorization has been granted by Seller to return or dispose of Products. Products that are to be returned for final inspection must be returned Freight Prepaid in the most economical way. Credit will be issued for material found to be defective upon Seller's inspection based on prices at time of purchase.

6. PRODUCTS ORDERED IN ERROR

Products may be returned, provided that claim is made and Seller is notified within 7 days of receipt of Products, and the Products are in original buyer's possession not more than 30 days prior to return, subject to Seller's approval. If Products are accepted for return, they must be Freight Prepaid and buyer will be charged a minimum of 15% restocking charge, plus a charge back for outbound freight charges if the original order was shipped prepaid. Returns are not accepted for any Products that are specifically manufactured to meet the buyer's requirement of either specifications or quantity.

AGREEMENTS

These Terms and Conditions constitute the entire agreement between Seller and Purchaser as it relates to terms and conditions of sale, and supersedes any and all prior oral or written agreements, correspondence, quotations or understandings heretofore in force between the parties relating to the subject matter hereof. There are no agreements between Seller and Purchaser with respect to the Product herein except those specifically set forth in and made part of these terms and conditions. Any additional terms, conditions and/or prices are rejected by Seller.

These terms and conditions may be modified, cancelled or rescinded only by a written agreement of both parties executed by their duly authorized agents.

USE ONLY GENUINE EDCO PARTS & ACCESSORIES

For your own safety, the safety of others and the life of your machine.

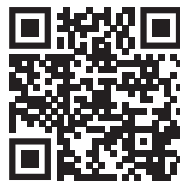
SUBMIT ALL WARRANTY CLAIMS AT:

www.edcoinc.com/customer-support



BEFORE USING THIS PRODUCT

Have You Used EDCO's Online Customer Support??



Scan This QRC or Visit
www.edcoinc.com/customer-support



READ: **EDCO Owner's Manuals and Parts Listings** share basic information and parts of each product. Download and print them whenever needed.



WATCH: **EDCO Product Training Videos** show how to use products, install tooling, and perform basic maintenance.



Example Only

FIND: Somewhere on this product is an **EDCO QRC Training Decal**. Scanning this code provides owner's information, videos, and other training content anywhere/anytime on your mobile device.



JOIN: **EDCOed.com** is a free, 24-hour training space. Each certification track focuses on a specific EDCO product group. The information in these tracks help businesses be successful with those products.

EDCO is always updating online training / information so you always have the most recent content.

Also see Operator's Safety & Limited Warranty Manual

Equipment Development Co., Inc. • 800.638.3326 • techsupport@edcoinc.com