

REVISED STARTING
SERIAL # 160110307**PARTS LIST MANUAL****MODEL SS26-35K****Gasoline Powered
35 H.P. Kohler Command Pro
Self-Propelled Concrete & Asphalt Saw****SAW SET-UP OPTIONS**

SKU NUMBER	BLADE GUARD SIZE	BLADE SPEED
31400-30	30 INCH	1900 RPM
31400-26	24 - 26 INCH	2100 RPM
31400-20	18 - 20 INCH	2100 RPM
31400-16	14 - 16 INCH	2750 RPM

**EQUIPMENT DEVELOPMENT COMPANY, INC.**100 Thomas Johnson Drive, Frederick, MD 21702-4600 USA
Phone: 800-638-3326 or 301-663-1600 • Fax: 800-447-3326 or 301-663-1607
Website: www.edcoinc.com • E-mail: sales@edcoinc.com

Printed in USA

JWA ©2016

READ AND UNDERSTAND THE OPERATORS INSTRUCTION MANUAL THOROUGHLY BEFORE ATTEMPTING TO OPERATE THIS EQUIPMENT.



Death or serious injury could occur if this machine is used improperly.



SAFETY MESSAGES

- Safety Instructions are preceded by a graphic alert symbol of DANGER, WARNING, or CAUTION.



Indicates an imminent hazard which, if not avoided, will result in death or serious injury.



Indicates an imminent hazard which, if not avoided, can result in death or serious injury.



Indicates hazards which, if not avoided, could result in serious injury and or damage to the equipment.

GASOLINE/PROPANE POWERED EQUIPMENT



- Engine exhaust from this product contains chemicals known to the State of California to cause cancer, birth defects or other reproductive harm.



- Gasoline is extremely flammable and poisonous. It should only be dispensed in well ventilated areas, and with a cool engine.

- Small gasoline engines produce high concentrations of carbon monoxide (CO) example: a 5 HP 4 cycle engine operation in an enclosed 100,000 cu. ft. area with only one change of air per hour is capable of providing deadly concentrations of CO in less than fifteen minutes. Five changes of air in the same area will produce noxious fumes in less than 30 minutes. Gasoline or propane powered equipment should not be used in enclosed or partially enclosed areas. Symptoms of CO poisoning include, headache, nausea, weakness, dizziness, visual problems and loss of consciousness. If symptoms occur - get into fresh air and seek medical attention immediately.

ELECTRICAL POWERED EQUIPMENT



Extreme care must be taken when operating electric models with water present: Ensure power cord is properly grounded, is attached to a Ground-Fault-Interrupter (GFI) outlet, and is undamaged.

- Check all electrical cables - be sure connections are tight and cable is continuous and in good condition. Be sure cable is correctly rated for both the operating current and voltage of this equipment.
- Improper connection of the equipment-grounding conductor can result in a risk of electric shock. Check with qualified electrician or service person if there is any doubt as to whether the outlet is properly grounded. Adhere to all local codes and ordinances.
- **NOTE:** In the event of a malfunction or breakdown, grounding provides a path of least resistance for the electric current to dissipate. The motor is equipped with a grounded plug and must be connected to an outlet that is properly installed and properly grounded. DO NOT modify the plug provided on the motor. If the plug does not fit the outlet have a qualified electrician install the proper receptacle.
- Switch motor OFF before disconnecting power.

- Do not disconnect power by pulling cord. To disconnect, grasp the plug, not the cord.
- Unplug power cord at the machine when not in use and before servicing.

GENERAL INSTRUCTIONS

- Equipment should only be operated by trained personnel in good physical condition and mental health (not fatigued). The operator and maintenance personnel must be physically able to handle the bulk weight and power of this equipment.
- This is a one person tool. Maintain a safe operating distance to other personnel. It is the operators' responsibility to keep other people (workers, pedestrians, bystanders, etc.) away during operation. Block off the work area in all directions with roping, safety netting, etc. for a safe distance. Failure to do so may result in others being injured by flying debris or exposing them to harmful dust and noise.
- This equipment is intended for commercial use only.
- For the operator's safety and the safety of others, always keep all guards in place during operation.
- Never let equipment run unattended.



- Personal Protection Equipment and proper safety attire must be worn when operating this machinery. The operator must wear approved safety equipment appropriate for the job such as hard hat and safety shoes when conditions require. Hearing protection MUST be used (operational noise levels of this equipment may exceed 85db). Eye protection MUST be worn at all times.



Keep body parts and loose clothing away from moving parts. Failure to do so could result in dismemberment or death.

- Do not modify the machine.
- Stop motor/engine when adjusting or servicing this equipment. Maintain a safe operating distance from flammable materials. Sparks from the cutting-action of this machine can ignite flammable materials or vapors.

DUST WARNING



Some dust created by power sanding, sawing, grinding, drilling, and other construction activities contains chemicals known to cause cancer, birth defects, or other reproductive harm. Some examples of these chemicals are:

- Lead from lead-based paints, and
 - Crystalline silica from bricks and concrete and other masonry products.
- Your risk of exposure to these chemicals varies depending on how often you do this type of work. To reduce your risk: work in a well ventilated area, use a dust control system, such as an industrial-style vacuum, and wear approved personal safety equipment, such as a dust/particle respirator designed to filter out microscopic particles.

PARTS LIST MANUAL FOR MODEL SS26-35K

TABLE OF CONTENTS

<u>Section</u>	<u>Page Numbers</u>
Safety Messages & General Instructions	2
How To Order Replacement Parts	3
Illustration 1: Frame Grouping	4, 5
Illustration 2: Lift Grouping	6, 7
Illustration 3: Rear Axle Grouping	8, 9
Illustration 4: Transmission, Drive Lever & Linkage Grouping	10, 11
Illustration 5: Clutch Lever & Linkage Grouping	12, 13
Illustration 6: Clutch Grouping	14, 15
Illustration 7: Arbor Grouping	16, 17
Illustration 8: Blade Guard Grouping	18, 19
Illustration 9: Water Pump Grouping	20, 21
Illustration 10: Instrument Panel Grouping	22
Illustration 11: Blade Depth Gauge Grouping	23
Illustration 12: Operating Controls	24
Illustration 13: Guide Bar Assembly	25
Illustration 14: Engine & Mount Grouping	26, 27
Illustration 15: Belt Drive Grouping	28, 29
Illustration 16: Fuel Tank Grouping	30, 31
Illustration 17: Oil Drain Grouping	32
Illustration 18: Battery Grouping	33
Wiring Diagram for SS26-35K	34
Decals Sheets	35, 36, 37
This Page Left Blank Intentionally	38
Notes	39
Limited Equipment Warranty of Sale - Terms & Conditions	40

HOW TO ORDER REPLACEMENT PARTS

- ☐ To insure product safety and reliability, always use genuine EDCO replacement parts when making repairs to the equipment.
- ☐ When calling for parts, specify the MODEL and SERIAL number of the machine, which can be found on the NAME PLATE. Keep that information in the space provided. In addition to this information, give part number, description, and quantity as listed on the parts list to your parts representative.
- ☐ Please note: Due to improvements and changes in the equipment, the illustrations shown may be different than the actual machine.

FILL IN INFORMATION BELOW

Date of Purchase _____

Model # _____

Serial # _____

SKU # _____



EQUIPMENT DEVELOPMENT COMPANY, INC.

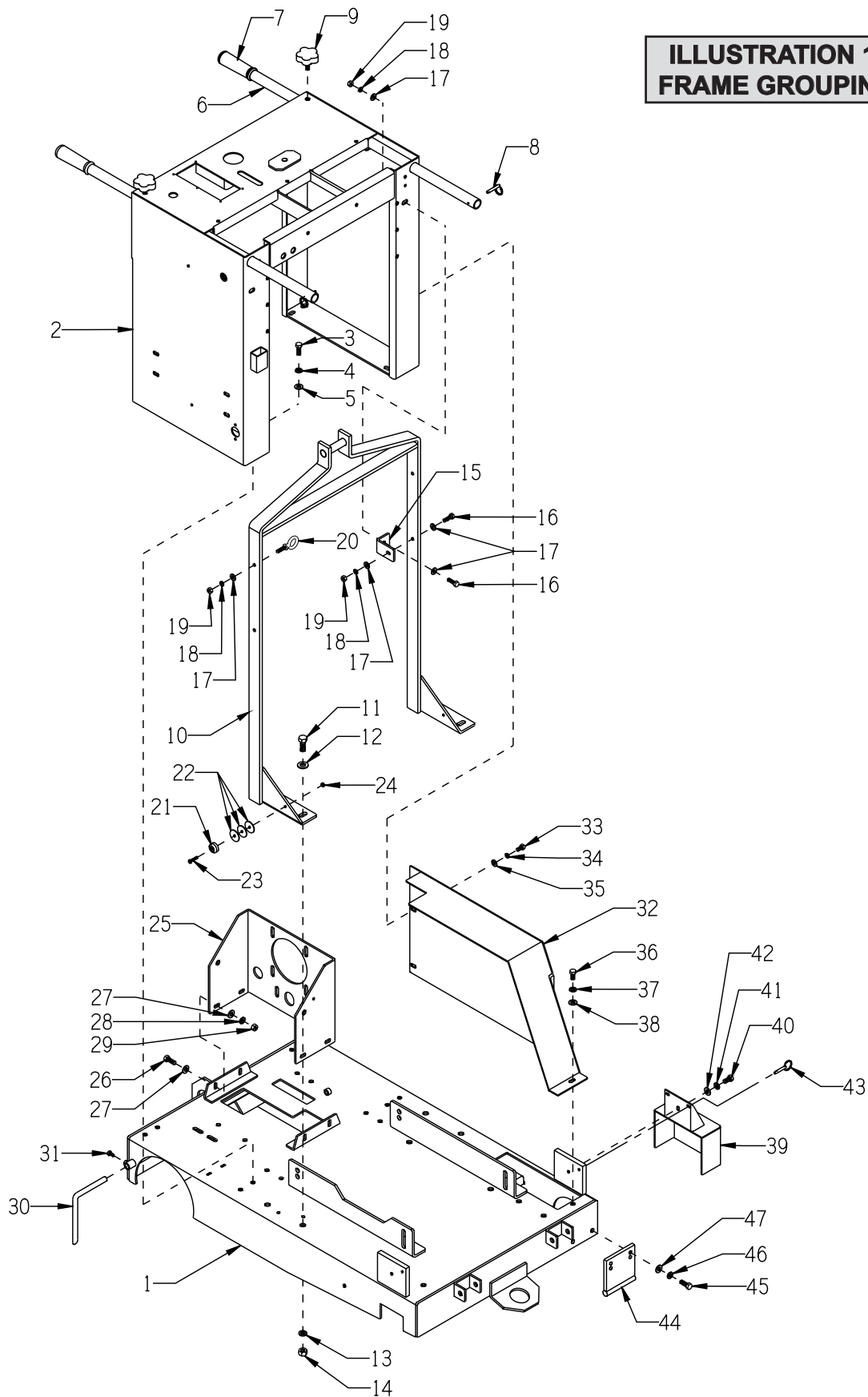
100 Thomas Johnson Drive, Frederick, MD 21702-4600 USA
 Phone: 800-638-3326 or 301-663-1600 • Fax: 800-447-3326 or 301-663-1607
 Website: www.edcoinc.com • E-mail: sales@edcoinc.com

Printed in USA

JWA ©2016

Page 3

**ILLUSTRATION 1:
FRAME GROUPING**



PARTS LISTING - ILLUSTRATION 1: FRAME GROUPING

ITEM #	PART #	DESCRIPTION	QTY.	ITEM #	PART #	DESCRIPTION	QTY.
1	50701	MAIN FRAME, SS-26	1	24	10832	NUT, KEPS LOCK 10-32 ZINC	1
2	50650	CONSOLE, SS-26 GAS	1	25	50508	MOUNT, TRANSMISSION, SS-26	1
3	10055	SCREW, CAP 3/8-16 X 1	8	26	10021	SCREW, CAP 3/8-24 X 1	4
4	10811	WASHER, LOCK 3/8 ZINC	8	27	10025	WASHER, FLAT 3/8 SAE ZINC	8
5	10025	WASHER, FLAT 3/8 SAE ZINC	8	28	10811	WASHER, LOCK 3/8 ZINC	4
6	50522	HANDLE BAR 36", SS-26	2	29	10014	NUT, HEX 3/8-24 ZINC	4
7	10608	GRIP, HAND 1" MODEL AT	2	30	51011	GUIDE POINTER, REAR	1
8	10145	PIN, DETENT RING 3/16 X 1-5/16	2	31	10834	SCREW, CAP 1/4-20 X 1/2 ZINC	1
9	51230	KNOB, STAR CLAMPING 3/8-16 X 1"STUD	2	32	50702K	BELT COVER, SS26-35K	1
10	50606K	BAIL, LIFTING	1	33	10053	SCREW, CAP 5/16-18 X 3/4	3
11	10321	SCREW, CAP 1/2-20 X 1-1/4	4	34	10801	WASHER, LOCK 5/16 ZINC	3
12	10312	WASHER, FLAT 1/2 SAE ZINC	4	35	10213	WASHER, FLAT 5/16 SAE ZINC	3
13	10045	WASHER, LOCK 1/2 ZINC	4	36	10907	SCREW, CAP 3/8-16 X 3/4	1
14	10072	NUT, HEX 1/2-20 ZINC	4	37	10811	WASHER, LOCK 3/8 ZINC	1
15	50711	BRACE, LIFTING BAIL	2	38	10025	WASHER, FLAT 3/8 SAE ZINC	1
16	10806	SCREW, CAP 5/16-18 X 1	4	39	50704	COVER, ARBOR, SS-26	1
17	10213	WASHER, FLAT 5/16 SAE ZINC	9	40	10907	SCREW, CAP 3/8-16 X 3/4	1
18	10801	WASHER, LOCK 5/16 ZINC	5	41	10811	WASHER, LOCK 3/8 ZINC	1
19	10054	NUT, HEX 5/16-18 ZINC	5	42	10025	WASHER, FLAT 3/8 SAE ZINC	1
20	11593	BOLT, EYE SHOULDER 5/16-18 X 1-1/8	1	43	49016	PIN, DETENT RING 1/4 X 1 E.L.	1
21	52022	BUMPER, RUBBER 1OD X 3/16ID X 7/16H	1	44	50703	GUARD, LOWER PULLEY, SS-26	1
22	40378-S1	WASHER, FENDER 1/4ID X 1-1/4OD S.S.	3	45	10055	SCREW, CAP 3/8-16 X 1	2
23	10384	SCREW, MACHINE 10-32 X 1	1	46	10811	WASHER, LOCK 3/8 ZINC	2
				47	10025	WASHER, FLAT 3/8 SAE ZINC	2

**EQUIPMENT DEVELOPMENT COMPANY, INC.**

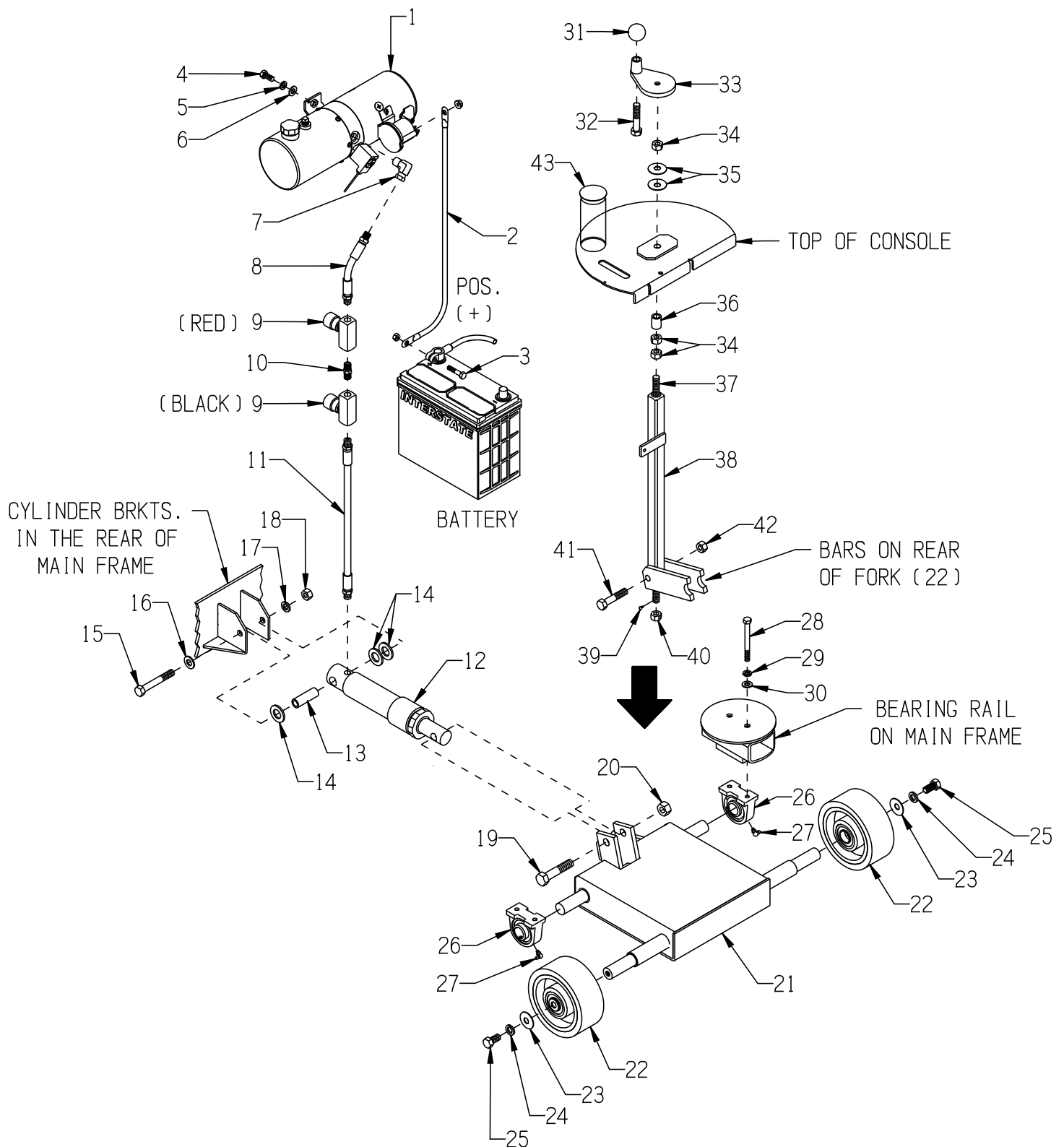
100 Thomas Johnson Drive, Frederick, MD 21702-4600 USA
 Phone: 800-638-3326 or 301-663-1600 • Fax: 800-447-3326 or 301-663-1607
 Website: www.edcoinc.com • E-mail: sales@edcoinc.com

Printed in USA

JWA ©2016

Page 5

ILLUSTRATION 2: LIFT GROUPING



PARTS LISTING - ILLUSTRATION 2: LIFT GROUPING

ITEM #	PART #	DESCRIPTION	QTY.	ITEM #	PART #	DESCRIPTION	QTY.
1	50620	PUMP, HYDRAULIC ELEC., 12VDC M-319 REPLACEMENT PARTS FOR PUMP: 50620-1 SOLENOID 50620-2 VALVE 50620-12 COIL 50620-42 PLUG, VENT (PLASTIC) 01143 50620-43 PLUG, SQUARE HEAD, 1/4 NPT	1	21	50502	FORK, SS-26	1
2	50117R	CABLE, EYE-EYE 4GA. X 24" (RED)	1	22	50439	WHEEL 6 X 2-1/2 X 1"BRG., RED POLY	2
3	10342	SCREW, CAP 5/16-18 X 1-1/2	1	23	10433	WASHER, BELLEVILLE 1/2ID X 3/32THK	2
4	10055	SCREW, CAP 3/8-16 X 1	2	24	10045	WASHER, LOCK 1/2 ZINC	2
5	10811	WASHER, LOCK 3/8 ZINC	2	25	10914	SCREW, CAP 1/2-13 X 1	2
6	10025	WASHER, FLAT 3/8 SAE ZINC	2	26	50222	BEARING, BALL 1" TPB	2
7	10794	FITTING, SWIVEL 90D, 3/8 X 1/4 NPT	1	27	10961	FITTING, GREASE 1/4-28 X 90°	2
8	57078	HOSE, HYDRAULIC 1/4NPT X 6-1/2"LOA	1	28	10868	SCREW, CAP 3/8-16 X 3-1/2	4
9	61116	VALVE, FLOW CONTROL	2	29	10811	WASHER, LOCK 3/8 ZINC	4
10	10717	NIPPLE, HEX 1/4 NPT (BRASS)	1	30	10025	WASHER, FLAT 3/8 SAE ZINC	4
11	50527	HOSE, HYDRAULIC 1/4NPT X 15-1/2"LOA	1	31	14023	KNOB, BALL 1-3/8 W/ 1/2-13THD	1
12	61020	CYLINDER, HYDRAULIC	1	32	10323	SCREW, CAP 1/2-13 X 2-1/2	1
13	61021	SPACER, CYL.REAR 1/2"ID X 2-1/4	1	33	57016	HANDWHEEL, SMALL W/ 1/2-13 THD.	1
14	10009	WASHER, FLAT 3/4 SAE ZINC	3	34	10417	NUT, HEX 1/2-13 ZINC	3
15	10324	SCREW, CAP 1/2-13 X 3-1/2	1	35	10426	WASHER, BELLEVILLE 1/2ID X 3/64THK	2
16	10312	WASHER, FLAT 1/2 SAE ZINC	1	36	50526	SPACER, STEEL 1/2"ID X 1"LG	1
17	10045	WASHER, LOCK 1/2 ZINC	1	37	50409	ROD, ALLTHREAD LINKAGE 1/2-13 X 22"	1
18	10417	NUT, HEX 1/2-13 ZINC	1	38	50412	LINKAGE LOWER TUBE, SS-26	1
19	10326	SCREW, CAP 5/8-11 X 3	1	39	10127	SCREW, DRIVE 1/8 X 1/4"L	1
20	10809	NUT, HEX LOCK 5/8-11 ZINC	1	40	50455	NUT 1/2-13, SPECIAL	1
				41	10343	SCREW, CAP 1/2-20 X 2-1/2	1
				42	10809	NUT, HEX LOCK 5/8-11 ZINC	1
				43	65022	PLUG, HOLE 2"	1



EQUIPMENT DEVELOPMENT COMPANY, INC.

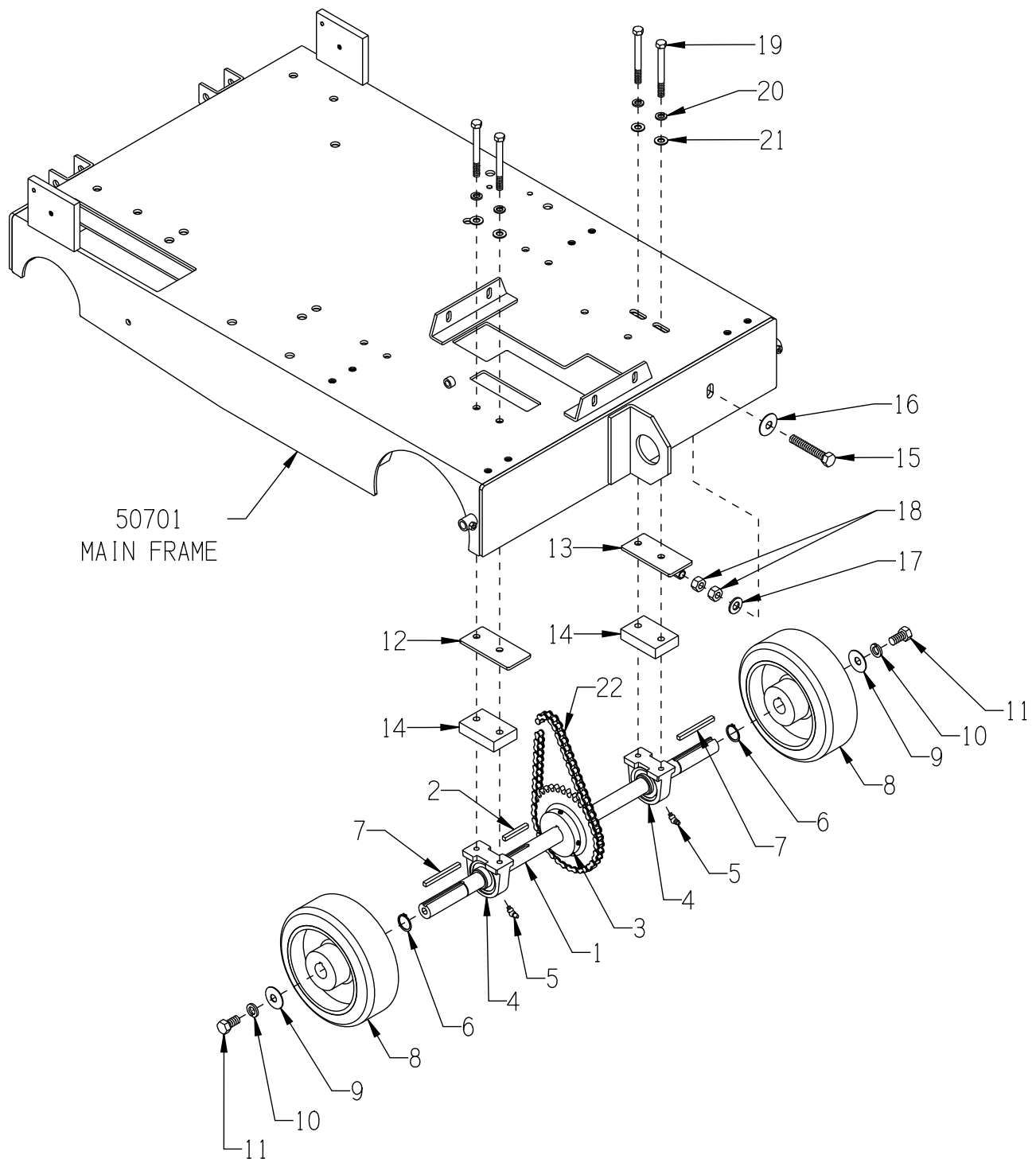
100 Thomas Johnson Drive, Frederick, MD 21702-4600 USA
 Phone: 800-638-3326 or 301-663-1600 • Fax: 800-447-3326 or 301-663-1607
 Website: www.edcoinc.com • E-mail: sales@edcoinc.com

Printed in USA

JWA ©2016

Page 7

ILLUSTRATION 3: REAR AXLE GROUPING



PARTS LISTING - ILLUSTRATION 3: REAR AXLE GROUPING			
ITEM #	PART #	DESCRIPTION	QTY.
1	50519	AXLE SHAFT 1"DIA. X 25"L, SS-26	1
2	10115	KEY 1/4SQ X 2	1
3	61126	SPROCKET #40B34 X 1"BORE	1
4	50222	BEARING, BALL 1" TPB	2
5	10960	FITTING, GREASE 1/4-28 X 45°	2
6	10906	RETAINING RING, EXT. 1"	2
7	10132	KEY 1/4SQ X 3	2
8	61065	WHEEL 8 X 3 X 1"BORE	2
9	10433	WASHER, BELLEVILLE 1/2ID X 3/32THK	2
10	10045	WASHER, LOCK 1/2 ZINC	2
11	10914	SCREW, CAP 1/2-13 X 1	2
12	50511	SHIM, AXLE BEARING, SS-26	1
13	50512	SHIM, AXLE BEARING W/ ADJ.,SS-26	1
14	50510	SPACER, BEARING, SS-26	2
15	10340	BOLT, TAP 1/2-13 X 3 (FULL THREAD)	1
16	10433	WASHER, BELLEVILLE 1/2ID X 3/32THK	1
17	10312	WASHER, FLAT 1/2 SAE ZINC	1
18	10417	NUT, HEX 1/2-13 ZINC	2
19	10318	SCREW, CAP 3/8-16 X 3-3/4	4
20	10811	WASHER, LOCK 3/8 ZINC	4
21	10025	WASHER, FLAT 3/8 SAE ZINC	4
22	50542	CHAIN #40 X 25" + CL, SS-26	1


EQUIPMENT DEVELOPMENT COMPANY, INC.

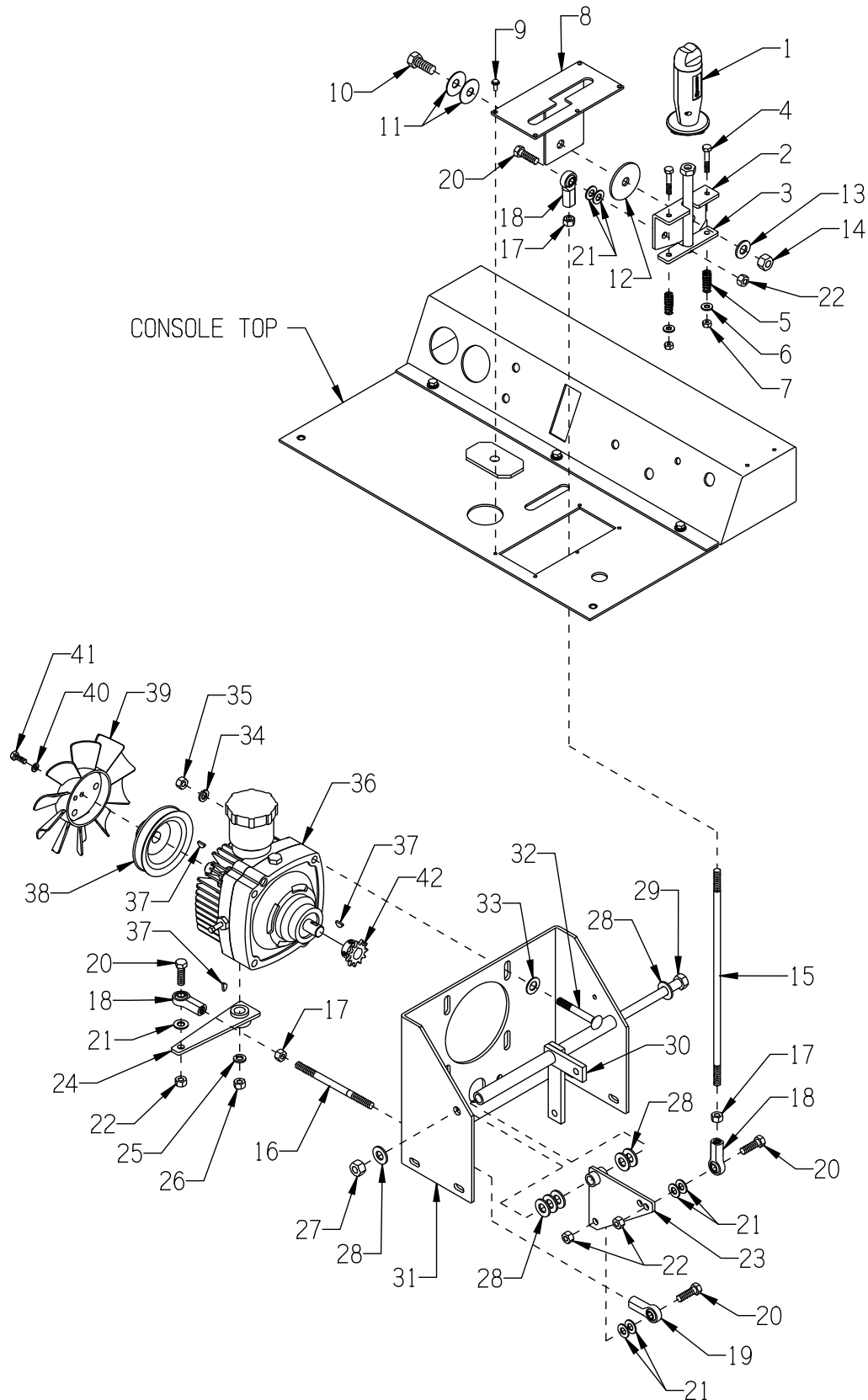
100 Thomas Johnson Drive, Frederick, MD 21702-4600 USA
 Phone: 800-638-3326 or 301-663-1600 • Fax: 800-447-3326 or 301-663-1607
 Website: www.edcoinc.com • E-mail: sales@edcoinc.com

Printed in USA

JWA ©2016

Page 9

ILLUSTRATION 4: TRANSMISSION, DRIVE LEVER & LINKAGE GROUPING



**PARTS LISTING - ILLUSTRATION 4:
TRANSMISSION, DRIVE LEVER & LINKAGE GROUPING**

ITEM #	PART #	DESCRIPTION	QTY.	ITEM #	PART #	DESCRIPTION	QTY.
1	50610	GRIP W/ ROCKER SWITCH	1	20	10309	SCREW, CAP 3/8-24 X 1-1/4	4
	50610-1	INDIVIDUAL PARTS:	1	21	10025	WASHER, FLAT 3/8 SAE ZINC	7
	50614A	GRIP BUILD KIT, 2 HALVES	1	22	10004	NUT, HEX LOCK 3/8-24 ZINC	4
	50615	ROCKER SWITCH W/ WIRES	1	23	57123	BELLCRANK, DRIVE CONTROL	1
		CAP, RUBBER BOOT	1	24	50422	TRANS. CONTROL ARM	1
2	50613	PLATE, DRIVE LEVER	1	25	10811	WASHER, LOCK 3/8 ZINC	1
		PRESSURE		26	10404	NUT, HEX 3/8-16 ZINC	1
3	50608	LEVER, DRIVE, SS-26	1	27	10407	NUT, HEX LOCK 1/2-13 ZINC	1
4	10315	SCREW, CAP 1/4-20 X 1-1/2	2	28	10312	WASHER, FLAT 1/2 SAE ZINC	7
5	57471	SPRING, COMP. .	2	29	10421	SCREW, CAP 1/2-13 X 13	1
		468"OD X 1.25"FL		30	50450	BELL CRANK, CLUTCH, SS-26	1
6	10602	WASHER, FLAT 1/4 SAE ZINC	2	31	50508	MOUNT, TRANSMISSION, SS-26	1
7	10015	NUT, HEX LOCK 1/4-20 ZINC	2	32	10909	BOLT, CARRIAGE 3/8-16 X 3	4
8	50607	GATE, DRIVE LEVER, SS-26	1	33	10040	WASHER, GARRET	4
9	10877	SCREW, CAP STSHW	5			17/32 X 1 X .054	
10	10321	SCREW, CAP 1/2-20 X 1-1/4	1	34	10811	WASHER, LOCK 3/8 ZINC	4
11	10426	WASHER, BELLEVILLE		35	10404	NUT, HEX 3/8-16 ZINC	4
		1/2ID X 3/64THK		36	50061	TRANSMISSION, HYDROSTATIC	1
12	50428	WASHER, FIBER	1	37	50071	KEY, WOODRUFF 1/8 X 1/2	3
		2-1/4OD X 1/2ID X 1/8				(#404)	
13	10312	WASHER, FLAT 1/2 SAE ZINC	1	38	50062	SHEAVE, TRANS.	1
14	10205	NUT, HEX LOCK 1/2-20 ZINC	1			4"OD X 1GR. X .671"B	
15	57124	LINKAGE, ROD 3/8 X 14-5/8"L	1	39	50266	FAN BLADE W/ PLATE 7",	1
16	50420	LINKAGE, ROD 3/8 X 5-3/4"L	1			TRANSMISSION	
17	10014	NUT, HEX 3/8-24 ZINC	3	40	10038	WASHER, LOCK 1/4 ZINC	1
18	10919	ROD END, FEMALE	3	41	10018	SCREW, CAP 1/4-20 X 3/4	1
		3/8-24 R.H. THREAD		42	50048	SPROCKET #3511 X .67"BORE	1
19	10919L	ROD END, FEMALE	1				
		3/8-24 L.H. THREAD					



EQUIPMENT DEVELOPMENT COMPANY, INC.

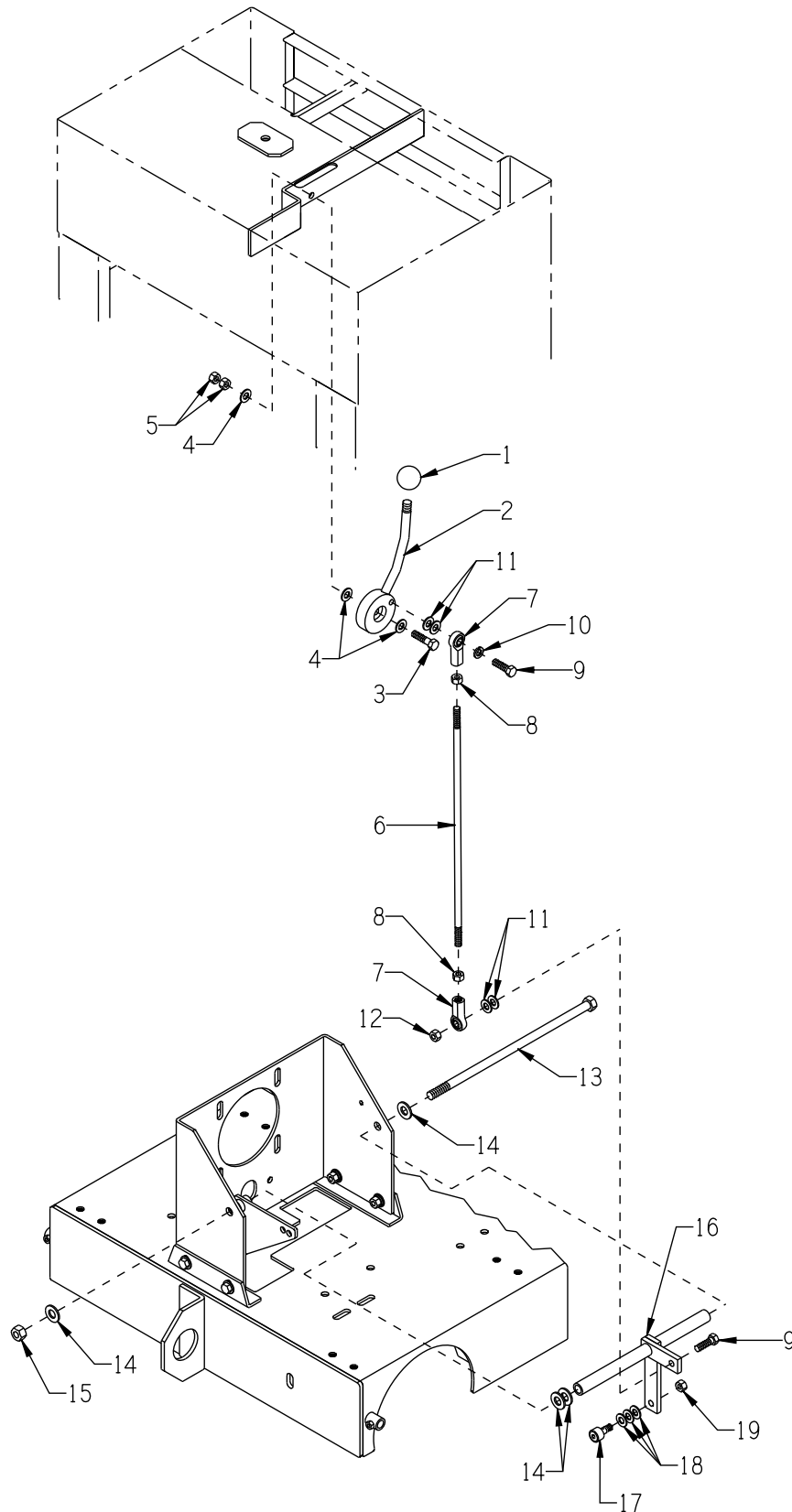
100 Thomas Johnson Drive, Frederick, MD 21702-4600 USA
 Phone: 800-638-3326 or 301-663-1600 • Fax: 800-447-3326 or 301-663-1607
 Website: www.edcoinc.com • E-mail: sales@edcoinc.com

Printed in USA

JWA ©2016

Page 11

ILLUSTRATION 5: CLUTCH LEVER & LINKAGE GROUPING



PARTS LISTING - ILLUSTRATION 5: CLUTCH LEVER & LINKAGE GROUPING			
ITEM #	PART #	DESCRIPTION	QTY.
1	14023	KNOB, BALL 1-3/8 W/ 1/2-13THD, BLK.	1
2	50611	LEVER, CLUTCH, SS-26	1
3	10816	SCREW, CAP 3/8-24 X 1-1/2	1
4	10025	WASHER, FLAT 3/8 SAE ZINC	3
5	10004	NUT, HEX LOCK 3/8-24 ZINC	2
6	50612	LINKAGE, ROD 3/8 X 17"L	1
7	10919	ROD END, FEMALE 3/8-24 R.H. THREAD	2
8	10014	NUT, HEX 3/8-24 ZINC	2
9	10309	SCREW, CAP 3/8-24 X 1-1/4 ZINC	2
10	10811	WASHER, LOCK 3/8 ZINC	1
11	10025	WASHER, FLAT 3/8 SAE ZINC	4
12	10004	NUT, HEX LOCK 3/8-24 ZINC	1
13	10421	SCREW, CAP 1/2-13 X 13	1
14	10312	WASHER, FLAT 1/2 SAE ZINC	4
15	10407	NUT, HEX LOCK 1/2-13 ZINC	1
16	50450	BELL CRANK, CLUTCH, SS-26	1
17	10924	CAM FOLLOWER BRG. 3/4" X 3/8-24THD	1
18	10025	WASHER, FLAT 3/8 SAE ZINC	3
19	10004	NUT, HEX LOCK 3/8-24 ZINC	1


EQUIPMENT DEVELOPMENT COMPANY, INC.

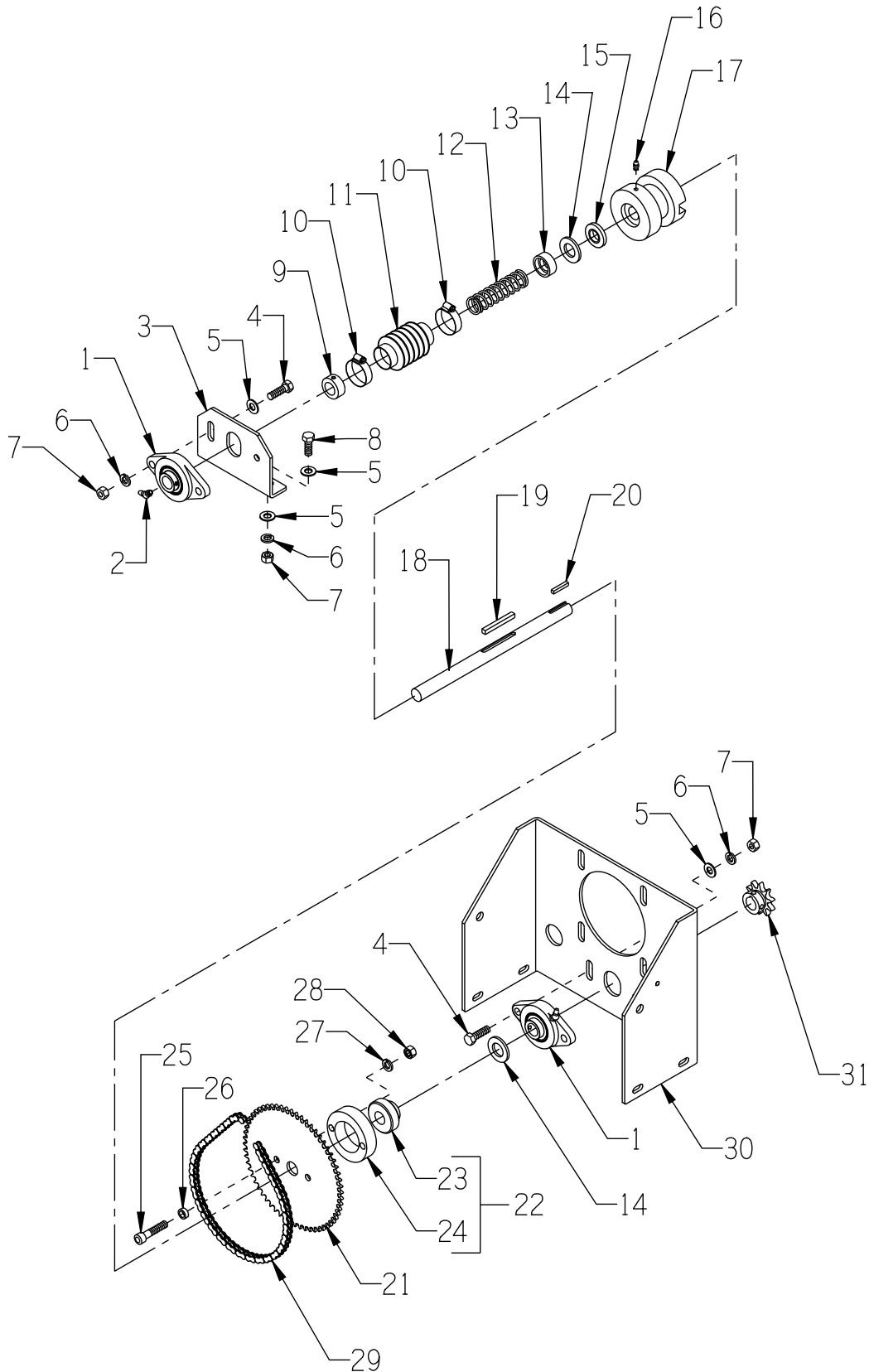
100 Thomas Johnson Drive, Frederick, MD 21702-4600 USA
 Phone: 800-638-3326 or 301-663-1600 • Fax: 800-447-3326 or 301-663-1607
 Website: www.edcoinc.com • E-mail: sales@edcoinc.com

Printed in USA

JWA ©2016

Page 13

ILLUSTRATION 6: CLUTCH GROUPING



PARTS LISTING - ILLUSTRATION 6: CLUTCH GROUPING			
ITEM #	PART #	DESCRIPTION	QTY.
1	50049	BEARING, BALL 3/4" 2-HOLE FLANGE	2
2	10960	FITTING, GREASE 1/4-28 X 45°	2
3	50509	MOUNT, JACKSHAFT BEARING	1
4	10309	SCREW, CAP 3/8-24 X 1-1/4 ZINC	2
5	10025	WASHER, FLAT 3/8 SAE ZINC	8
6	10811	WASHER, LOCK 3/8 ZINC	6
7	10014	NUT, HEX 3/8-24 ZINC	6
8	10021	SCREW, CAP 3/8-24 X 1	2
9	10428	COLLAR, LOCKING 3/4"ID	1
10	10768	CLAMP, HOSE, SAE #16, ADJ. TO 1-1/2	2
11	10930	BELLOWS 1-1/4ID X 2-3/8EL X 1-3/4RL	1
12	10922	SPRING, COMP. 1"OD X 3.75"FL	1
13	57044	CLUTCH SPRING CUP	1
14	10009	WASHER, FLAT 3/4 SAE ZINC	2
15	3695	SEAL, OIL .750 X 1.375 X .250	1
16	10808	FITTING, GREASE 1/4-28 STRAIGHT	1
17	57042	CLUTCH, DOG BLOCK	1
18	50518	JACKSHAFT, CLUTCH 11-1/2", SS-26	1
19	10307	KEY 1/4SQ X 2-1/4	1
20	50523	KEY 3/16SQ X 1-1/8	1
21	50476	SPROCKET, CLUTCH #35A60	1
22	57038A	BEARING & CARRIER ASSY., CLUTCH	1
23	57038	BEARING, BALL 3/4ID X 1.8504"OD	1
24	57039	CARRIER, CLUTCH BEARING	1
25	10354	SCREW, SKT. HD. CAP 3/8-24 X 1-3/4	2
26	10113	SPACER, STEEL 9/16OD X 3/8ID X 7/32	2
27	10811	WASHER, LOCK 3/8 ZINC	2
28	10014	NUT, HEX 3/8-24 ZINC	2
29	64032	CHAIN #35 X 24-1/2" + CL	1
30	50508	MOUNT, TRANSMISSION, SS-26	1
31	50436	SPROCKET #40B10 X 3/4"BORE	1


EQUIPMENT DEVELOPMENT COMPANY, INC.

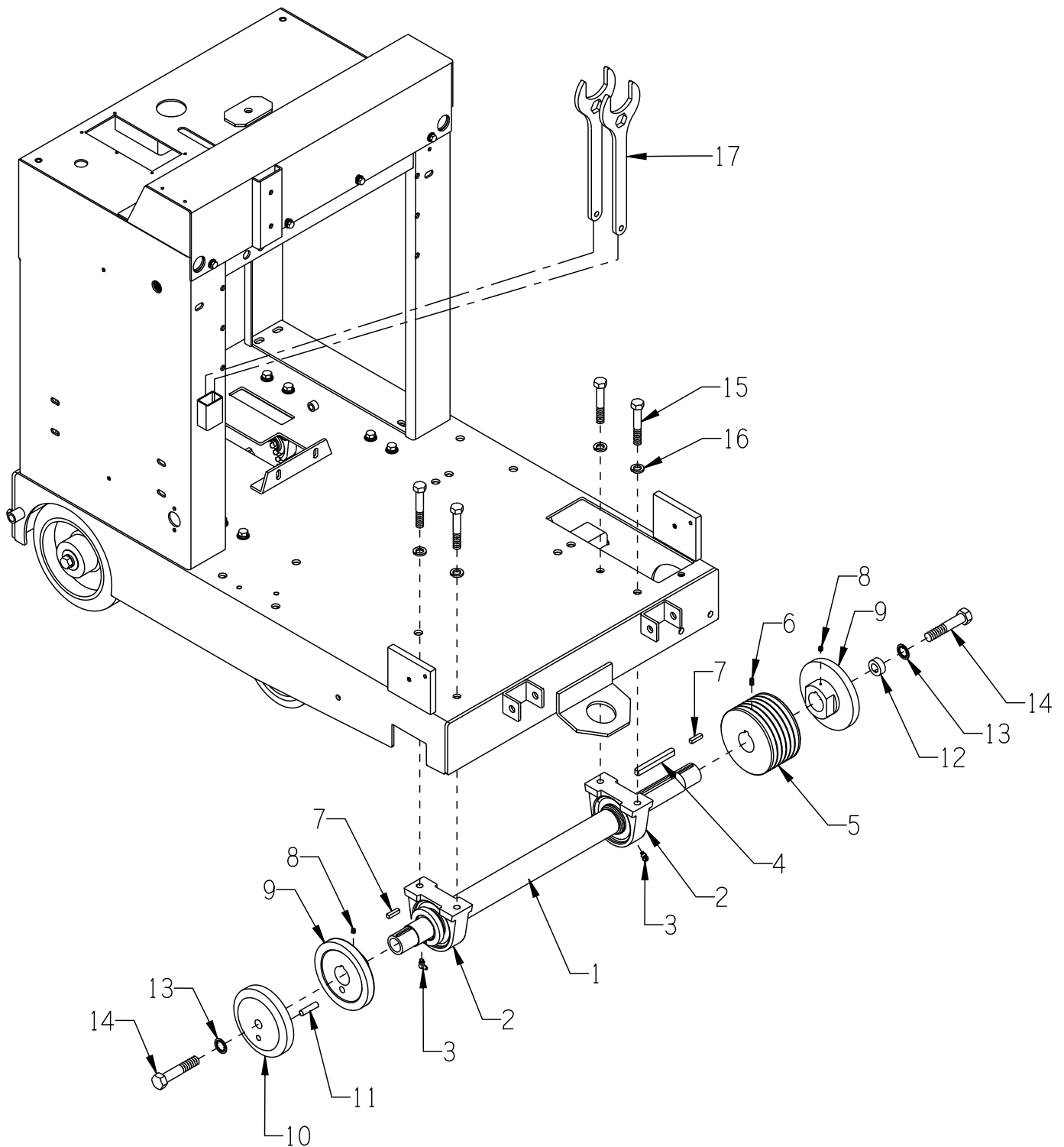
100 Thomas Johnson Drive, Frederick, MD 21702-4600 USA
 Phone: 800-638-3326 or 301-663-1600 • Fax: 800-447-3326 or 301-663-1607
 Website: www.edcoinc.com • E-mail: sales@edcoinc.com

Printed in USA

JWA ©2016

Page 15

ILLUSTRATION 7: ARBOR GROUPING



PARTS LISTING - ILLUSTRATION 7: ARBOR GROUPING			
ITEM #	PART #	DESCRIPTION	QTY.
1	50720	ARBOR SHAFT 28-1/8"L, SS-26	1
2	10111	BEARING, BALL 1-1/2" TAP PIL. BLOCK	2
3	10961	FITTING, GREASE 1/4-28 X 90°	2
4	10074	KEY 3/8SQ X 3-1/2	1
5	50724	SHEAVE 5.30"OD X 6GR.3V X SK. (REQUIRES BUSHING) (30" BLADE SET-UP)	1
	50725	BUSHING, SHEAVE SK X 1-7/16"BORE	
	10512	4.80"OD X 6GR.3V X 1-7/16"B (18"-26" BLADE SET-UP)	
	10511	3.65"OD X 6GR.3V X 1-7/16"B (14"-16" BLADE SET-UP)	
6	11854	SCREW, SET 10-32 X 1/2	4
7	10174	KEY 1/4SQ X 1	2
8	10161	SCREW, SET 1/4-28 X 5/16	2
9	50734	ARBOR BACKING PLATE 6" (30" BLADE SET-UP)	2
	50721	5" (14" - 26" BLADE SET-UP)	
10	57405	ARBOR BLADE CAP 6" (30" BLADE SET-UP)	1
	57403	5" (14" - 26" BLADE SET-UP)	
11	50722	PIN, SHEAR PROOF 3/8 X 1-1/2	1
12	10096	COLLAR, LOCKING 5/8"ID (SET SCREW REMOVED)	1
13	10457	WASHER, LOCK, INT. TOOTH 5/8"	2
14	10359	SCREW, CAP 5/8-11 X 3-1/4	2
15	10499	SCREW, CAP 1/2-13 X 3	4
16	10045	WASHER, LOCK 1/2 ZINC	4
17	57406	WRENCH, ARBOR, 2" & 15/16" COMBO	2


EQUIPMENT DEVELOPMENT COMPANY, INC.

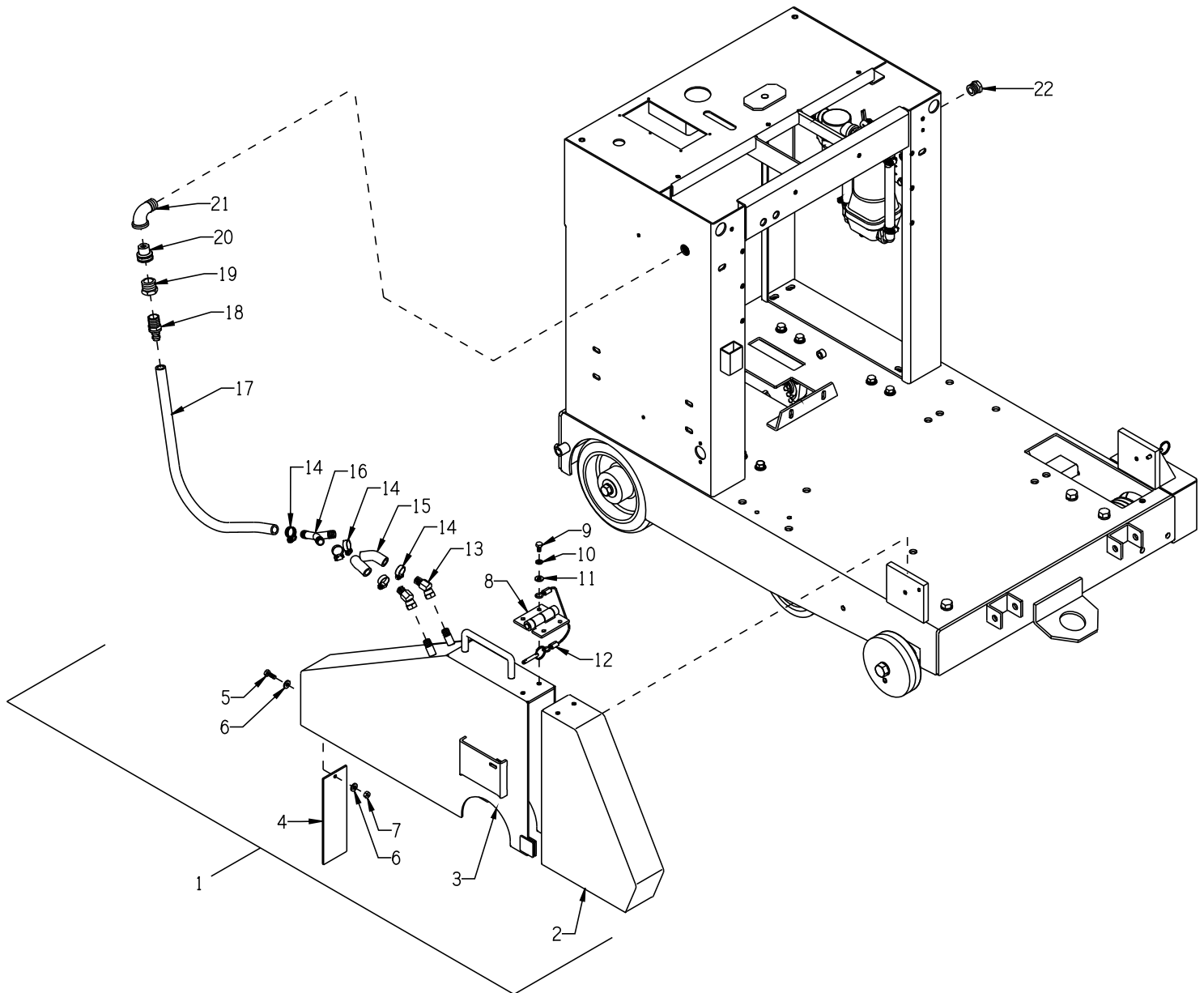
100 Thomas Johnson Drive, Frederick, MD 21702-4600 USA
 Phone: 800-638-3326 or 301-663-1600 • Fax: 800-447-3326 or 301-663-1607
 Website: www.edcoinc.com • E-mail: sales@edcoinc.com

Printed in USA

JWA ©2016

Page 17

ILLUSTRATION 8: BLADE GUARD GROUPING



PARTS LISTING - ILLUSTRATION 8: BLADE GUARD GROUPING			
ITEM #	PART #	DESCRIPTION	QTY.
1	50735A* 57449A* 57450A* 57451A*	BLADE GUARD ASSEMBLY (ITEMS 2 THRU 16) *NOTE: DROP "A" SUFFIX FOR ITEMS 2, 3, 8, 9 10, & 11. 30" BLADE 24" - 26" BLADE (SHOWN) 18" - 20" BLADE 14" - 16" BLADE	1
2	50735F 57449F 57450F 57451F	BLADE GUARD FRONT ONLY 30" BLADE 24" - 26" BLADE (SHOWN) 18" - 20" BLADE 14" - 16" BLADE	1
3	50735R 57449R 57450R 57451R	BLADE GUARD REAR ONLY 30" BLADE 24" - 26" BLADE (SHOWN) 18" - 20" BLADE 14" - 16" BLADE	1
4	41115	FLAP, RUBBER 2-1/2 X 8	1
5	10018	SCREW, CAP 1/4-20 X 3/4	1
6	10602	WASHER, FLAT 1/4 SAE ZINC	2
7	10015	NUT, HEX LOCK 1/4-20 ZINC	1
8	11617	HINGE, BUTT 3 X 3 X 7GA.	1
9	10834	SCREW, CAP 1/4-20 X 1/2 ZINC	4
10	10038	WASHER, LOCK 1/4 ZINC	4
11	10602	WASHER, FLAT 1/4 SAE ZINC	1
12	57482 57483 57484 57485	PIN & CABLE 30" BLADE GUARD 24" - 26" BLADE GUARD 18" - 20" BLADE GUARD 14" - 16" BLADE GUARD	1
13	10710	FITTING, SWIVEL 45, 1/4NPT HYD.	2
14	50069	CLAMP, HOSE, SAE #6, ADJ. TO 13/16	5
15	50532	HOSE, WATER 1/2"ID X 2"L	2
16	10682	BARBED FITTING, "Y" 1/2"HOSE	1
17	57194 57183 57140	HOSE 1/2"ID 22"L FOR 30" GUARD 24"L FOR 24" - 26" GUARD 26"L FOR 14" - 16" & 18" - 20" GUARDS	1
18	80061	BARB, PUSH-ON 1/2HOSE X 1/2MPT	1
19	10780	CONN., MALE 3/4NH X 1/2FPT (BRASS)	1
20	80021	CONN., SWIVEL FEM. 3/4HOSE X 1/2MPT	1
21	10724	ELBOW, STREET 1/2NPT X 90 (BLACK)	1
22	50552	PIPE PLUG 1/2 NPT (BRASS)	1


EQUIPMENT DEVELOPMENT COMPANY, INC.

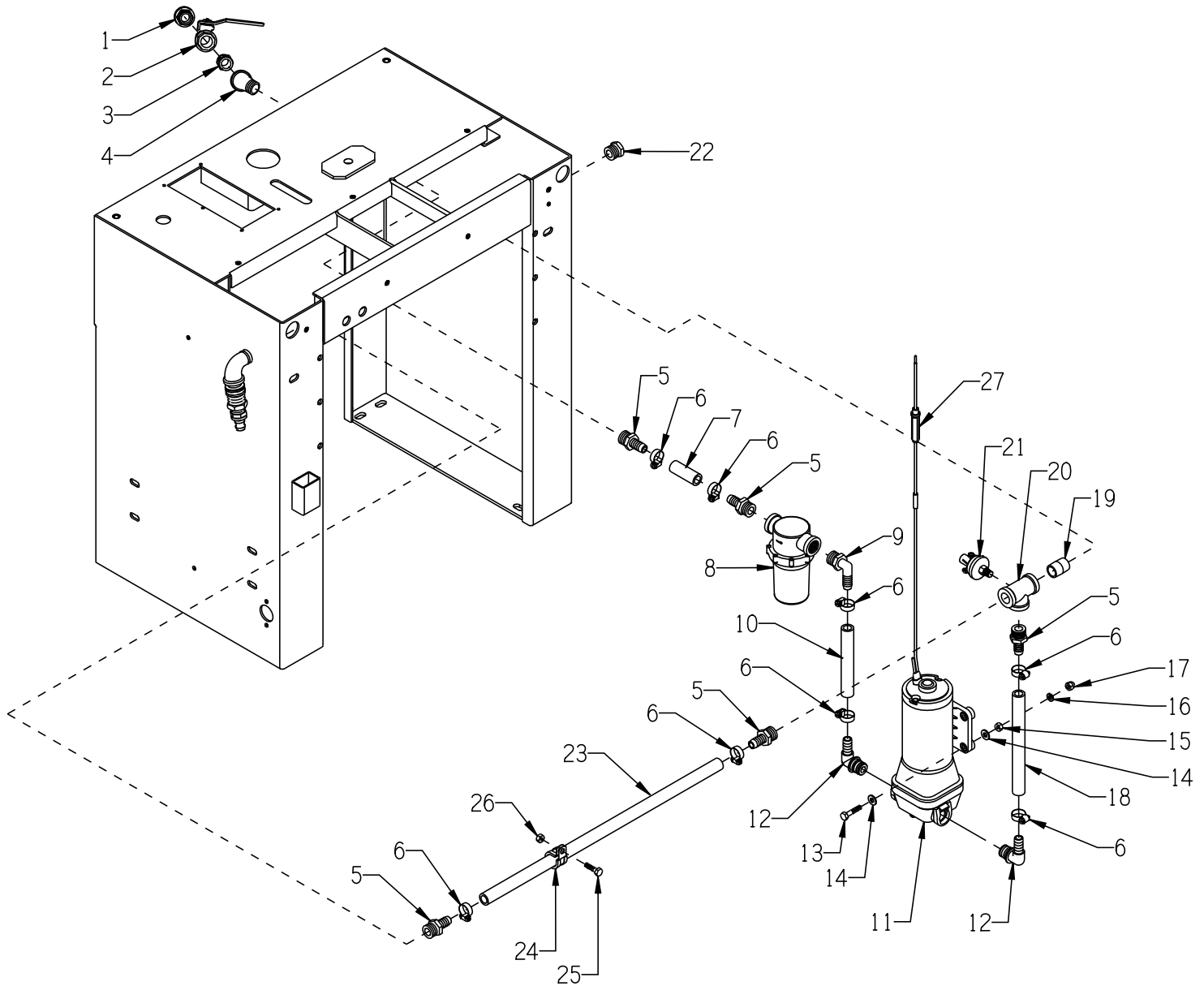
100 Thomas Johnson Drive, Frederick, MD 21702-4600 USA
 Phone: 800-638-3326 or 301-663-1600 • Fax: 800-447-3326 or 301-663-1607
 Website: www.edcoinc.com • E-mail: sales@edcoinc.com

Printed in USA

JWA ©2016

Page 19

ILLUSTRATION 9: WATER PUMP GROUPING



PARTS LISTING - ILLUSTRATION 9: WATER PUMP GROUPING			
ITEM #	PART #	DESCRIPTION	QTY.
1	80021	CONN., SWIVEL FEM. 3/4HOSE X 1/2MPT	1
2	10711A	VALVE & HOSE CONNECTOR ASSY.	1
	10711	VALVE, BALL 1/2 FPT	1
3	10679	NIPPLE, HEX 1/2NPT (BRASS)	1
4	10734	ELBOW, STREET 1/2NPT X 45 (BLACK)	1
5	10680	BARB, 1/2HOSE X 1/2MPT (PLASTIC)	5
6	50069	CLAMP, HOSE, SAE #6, ADJ. TO 13/16	8
7	50532	HOSE, WATER 1/2"ID X 2"L	1
8	57170	STRAINER, NYLON T-STYLE 1/2FPT	1
9	50471	BARB ELBOW 90, 1/2HOSE X 1/2MPT	1
10	57168	HOSE, WATER 1/2"ID X 5-3/8"L	1
11	50470	PUMP, WATER, 12VDC, FLOJET QUAD (INCLUDES ITEM 12)	1
12	50469	PUMP QUAD PORT BARB ELBOW 1/2" (INCLUDED W/ PUMP, ITEM 11)	2
13	10905	SCREW, CAP 1/4-20 X 1-1/4	4
14	10602	WASHER, FLAT 1/4 SAE ZINC	8
15	10015	NUT, HEX LOCK 1/4-20 ZINC	4
16	10038	WASHER, LOCK 1/4 ZINC	4
17	10876	NUT, ACORN 1/4-20	4
18	57176	HOSE, WATER 1/2"ID X 7-5/8"L	1
19	10728	PIPE NIPPLE, CLOSE 1/2NPT (BLACK)	1
20	50525	PIPE TEE, WATER PRESS. SW. 1/2 NPT	1
21	51030	SWITCH, PRESSURE, 76061 2 N/C	1
22	50552	PIPE PLUG 1/2 NPT (BRASS)	1
23	50655	HOSE, WATER 1/2"ID X 20"L, SS-26	1
24	11565	CLAMP, LOOM, 5/8" (SAE SIZE 10) RUBBER PIECE REMOVED	1
25	10031	SCREW, CAP 1/4-20 X 1	1
26	10861	NUT, KEPS LOCK 1/4-20 ZINC	1
27	50447	FUSE & HOLDER, 10 AMP	1

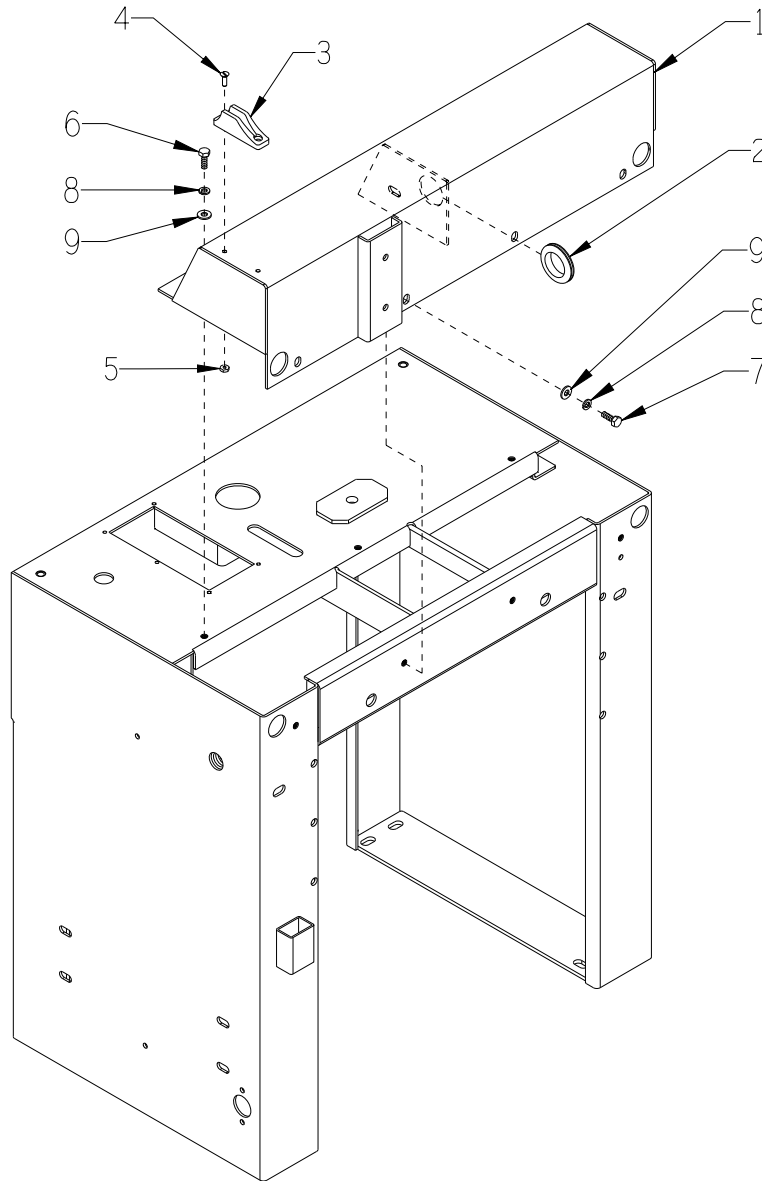

EQUIPMENT DEVELOPMENT COMPANY, INC.

100 Thomas Johnson Drive, Frederick, MD 21702-4600 USA
 Phone: 800-638-3326 or 301-663-1600 • Fax: 800-447-3326 or 301-663-1607
 Website: www.edcoinc.com • E-mail: sales@edcoinc.com

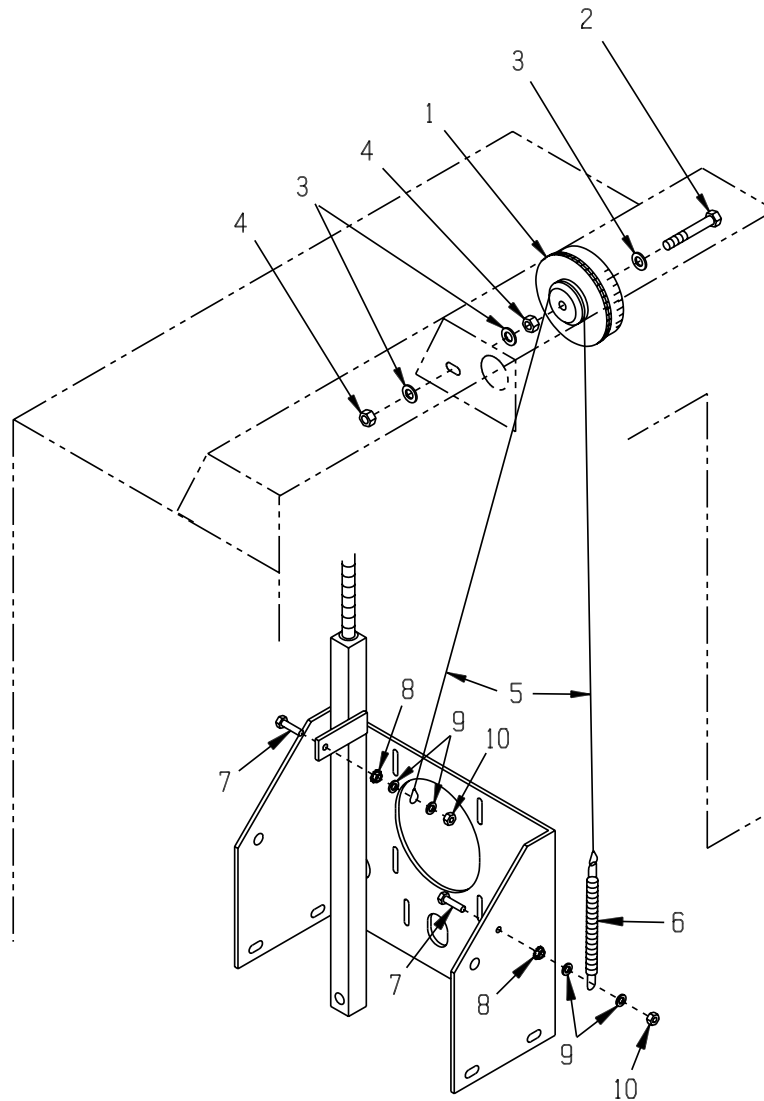
Printed in USA

JWA ©2016

Page 21

ILLUSTRATION 10: INSTRUMENT PANEL GROUPING

ITEM #	PART #	DESCRIPTION	QTY.
1	50651	INSTRUMENT PANEL, SS26-35K	1
2	57149	GROMMET 1-1/4ID X 1/8GRV. X 1-1/2GD	1
3	11591	ROPE CLEAT, NYLON JAM 3/16"-5/16"	1
4	11594	SCREW, MACHINE 10-32 X 5/8, SLT.FLT	2
5	10832	NUT, KEPS LOCK 10-32 ZINC	2
6	10018	SCREW, CAP 1/4-20 X 3/4	5
7	10031	SCREW, CAP 1/4-20 X 1	2
8	10038	WASHER, LOCK 1/4 ZINC	7
9	10602	WASHER, FLAT 1/4 SAE ZINC	7

ILLUSTRATION 11: BLADE DEPTH GAUGE GROUPING

ITEM #	PART #	DESCRIPTION	QTY.
1	57132	WHEEL, DEPTH GAUGE	1
2	10336	SCREW, CAP 3/8-24 X 2-1/4	1
3	10025	WASHER, FLAT 3/8 SAE ZINC	3
4	10004	NUT, HEX LOCK 3/8-24 ZINC	2
5	57143	CABLE, DEPTH GAUGE 3/32 X 34"L	1
6	3636	SPRING, EXT. 6"L	1
7	10031	SCREW, CAP 1/4-20 X 1	2
8	10861	NUT, KEPS LOCK 1/4-20 ZINC	2
9	10602	WASHER, FLAT 1/4 SAE ZINC	4
10	10150	NUT, HEX NYLON LOCK 1/4-20 ZINC	2

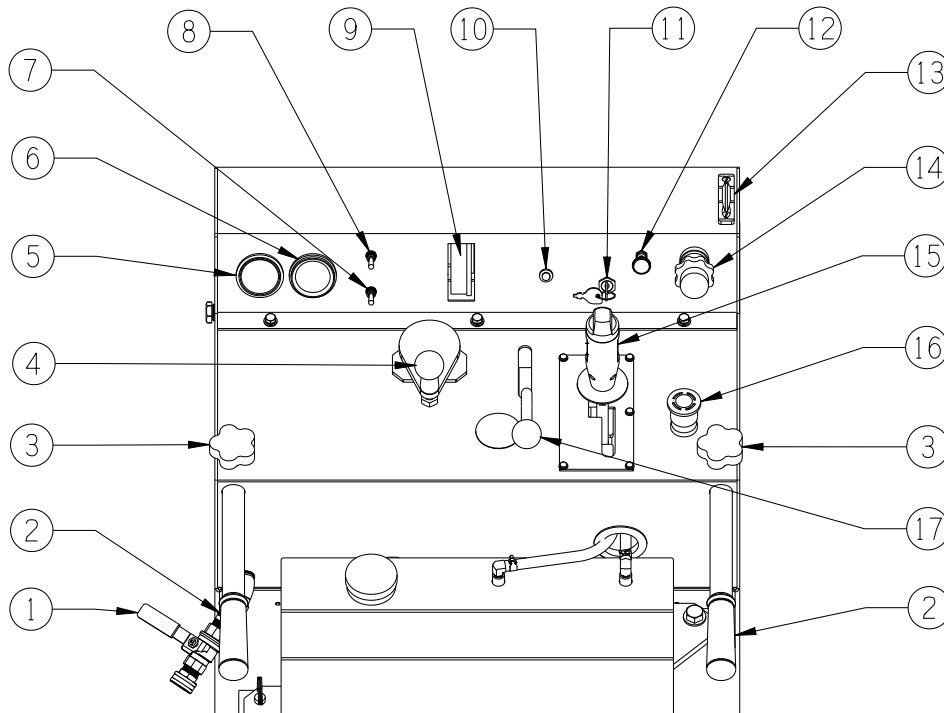
**EQUIPMENT DEVELOPMENT COMPANY, INC.**

100 Thomas Johnson Drive, Frederick, MD 21702-4600 USA
 Phone: 800-638-3326 or 301-663-1600 • Fax: 800-447-3326 or 301-663-1607
 Website: www.edcoinc.com • E-mail: sales@edcoinc.com

Printed in USA

JWA ©2016

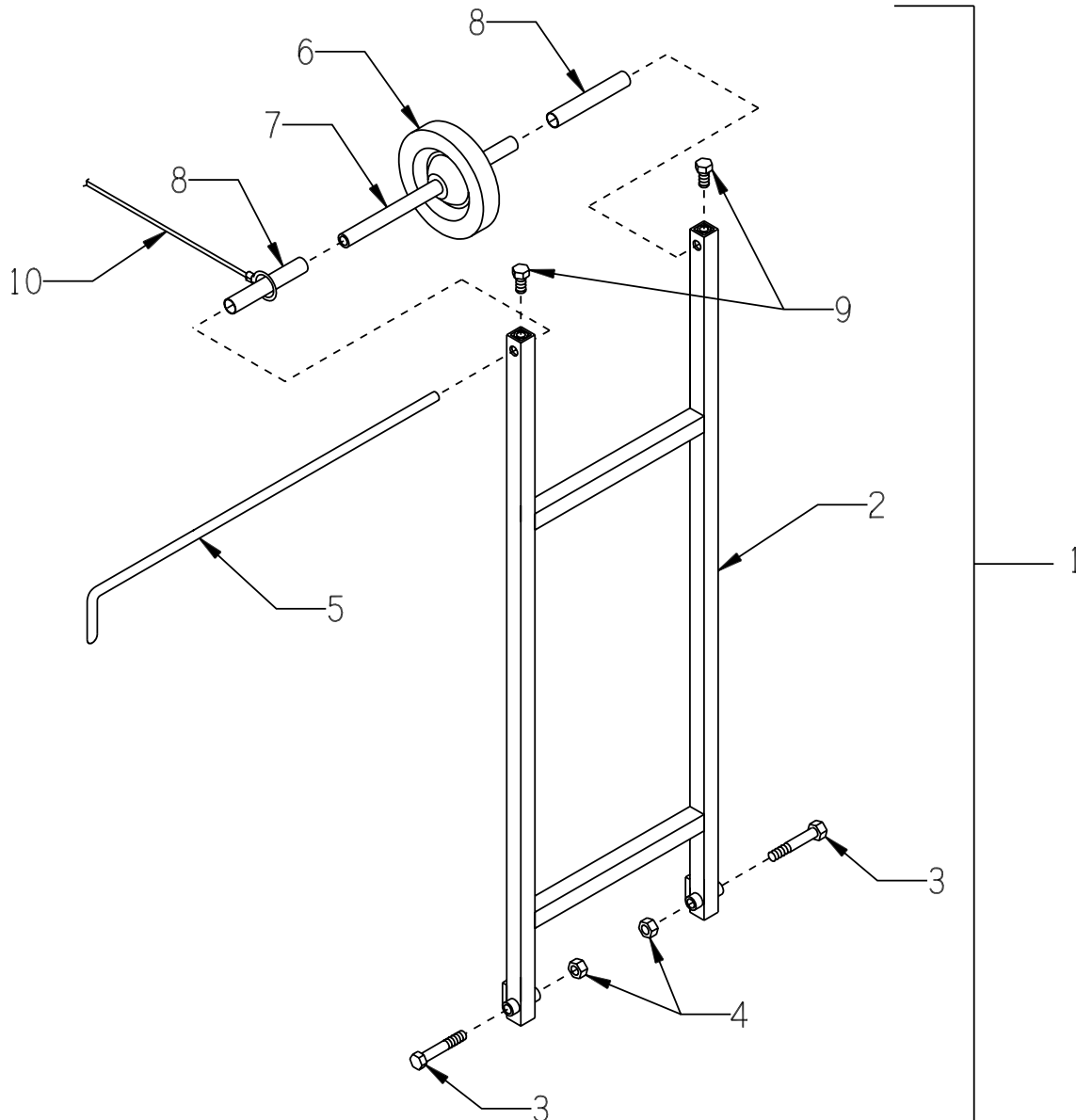
Page 23

ILLUSTRATION 12: OPERATING CONTROLS

ITEM #	PART #	DESCRIPTION	QTY.
1	-----	WATER HOOK-UP AND VALVE (ILLUS. 9)	1
2	-----	EXTENDABLE HANDLES (ILLUS. 1)	2
3	51230	HANDLE LOCK KNOB, STAR CLAMPING 3/8-16 X 1"STUD (ILLUS. 1)	2
4	-----	DEPTH CONTROL (ILLUS. 2)	1
5	10631	AMMETER YE2, 30 OR 60 AMP	1
6	10637	METER, HOUR 2-1/16"	1
7	10633	"WATER PUMP" SWITCH, TOGGLE SPST	1
8	10633	"BLADE SAVER" SWITCH, TOGGLE SPST	1
9	-----	DEPTH INDICATOR (ILLUS. 11)	1
10	15264	"LOW OIL INDICATOR" LAMP, OIL PRESSURE, RED	1
11	15266	"IGNITION" SWITCH, KEY, KOHLER 25 099 29-S	1
12	15129	"CHOKE" CABLE, CONTROL 72"	1
13	11591	ROPE CLEAT, NYLON JAM 3/16"-5/16" (ILLUS. 10)	1
14	50560	"THROTTLE" CABLE, VERNIER ADJ. LOCKING CONTROL	1
15	-----	DRIVE LEVER W/ BLADE LIFT/LOWER SWITCH (ILLUS. 4)	1
16	15275-G	SWITCH, E-STOP W/ GREEN N.O.CONTACT INCLUDES:	1
	15275	PUSHBUTTON, TURN TO RELEASE E-STOP	1
	15276	MOUNTING ADAPTER, PUSHBUTTON	1
	15277	CONTACT ELEMENT, NO GREEN LM2TC10	1
17	-----	CLUTCH CONTROL LEVER (ILLUS. 5)	1

ILLUSTRATION 13: GUIDE BAR ASSEMBLY

E-SS2635K-PL-0116



ITEM #	PART #	DESCRIPTION	QTY.
1	57119A	GUIDE BAR ASSEMBLY (INCLUDES ITEMS 2 THRU 9)	1
2	57119	GUIDE BAR	1
3	10202	SCREW, CAP 1/2-20 X 3	2
4	10154	NUT, HEX NYLON LOCK 1/2-20 ZINC	2
5	50514	POINTER, FRONT 24-1/2"	1
6	50536	WHEEL 5 X 1-1/2 X 3/4"BORE	1
7	57120	AXLE TUBE, GUIDE WHEEL	1
8	57171	SPACER TUBE 5-1/16, GUIDE BAR WHEEL	2
9	10304	SCREW, CAP 1/2-20 X 1	2
10	50555	ROPE, GUIDE BAR (NOT INCLUDED W/ GUIDE BAR ASSY.)	1



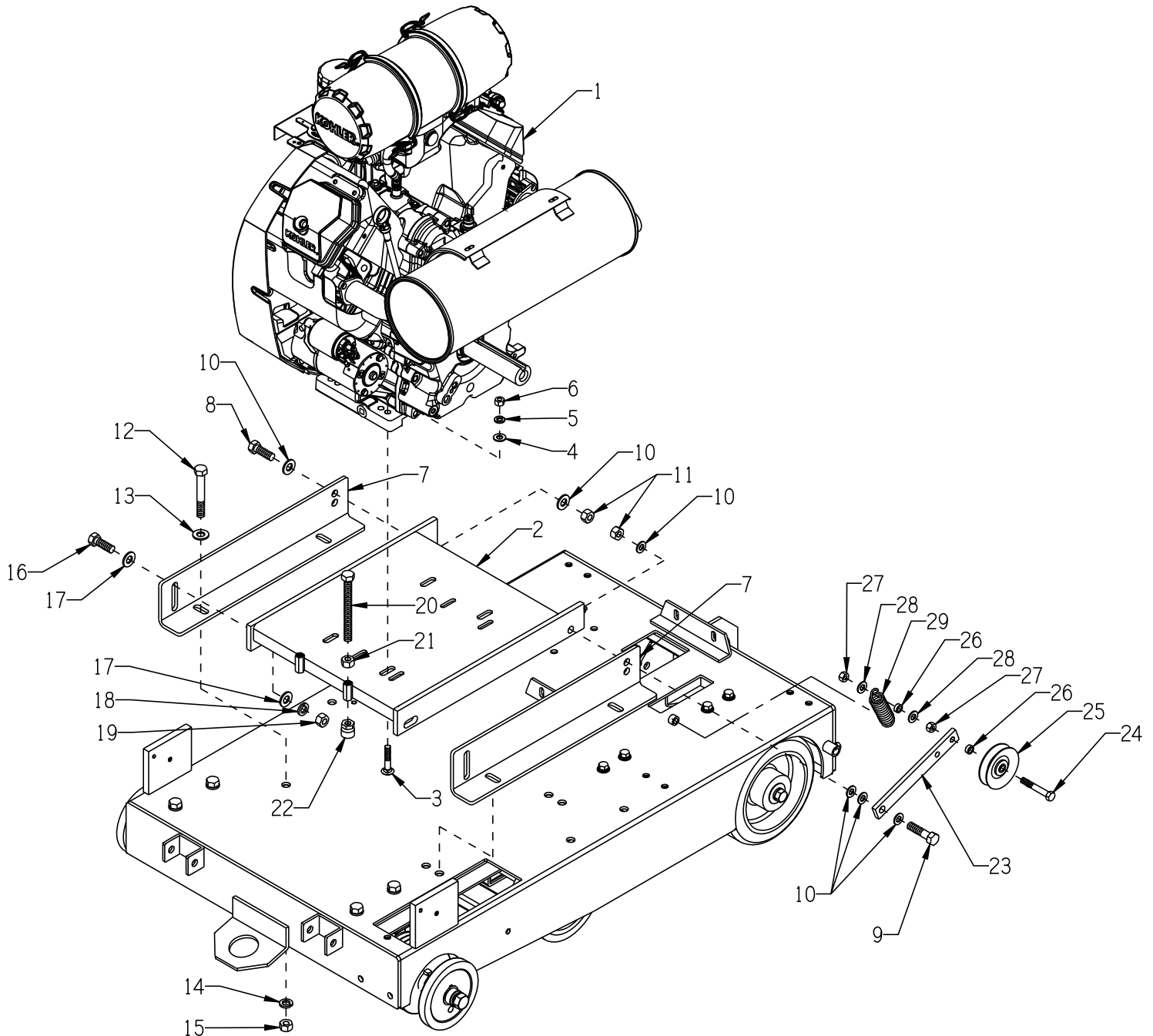
EQUIPMENT DEVELOPMENT COMPANY, INC.
 100 Thomas Johnson Drive, Frederick, MD 21702-4600 USA
 Phone: 800-638-3326 or 301-663-1600 • Fax: 800-447-3326 or 301-663-1607
 Website: www.edcoinc.com • E-mail: sales@edcoinc.com

Printed in USA

JWA ©2016

Page 25

ILLUSTRATION 14: ENGINE & MOUNT GROUPING



PARTS LISTING - ILLUSTRATION 14: ENGINE & MOUNT GROUPING			
ITEM #	PART #	DESCRIPTION	QTY.
1	15070	ENGINE, KOHLER 35HP COMMAND PRO PA-CH980-3000	1
	15244	AIR FILTER REPLACEMENTS:	1
	15245	ELEMENT, AIR FILTER - PRIMARY (OUTER) ELEMENT, AIR FILTER - SECONDARY (INNER)	1
2	50506KS	MOUNT, GASOLINE ENGINE, SS-26	1
3	10364	BOLT, CARRIAGE 3/8-16 X 2 GRADE 5	4
4	10025	WASHER, FLAT 3/8 SAE ZINC	4
5	10811	WASHER, LOCK 3/8 ZINC	4
6	10404	NUT, HEX 3/8-16 ZINC	4
7	50507	BRACKET, ENGINE MOUNT, SS-26	2
8	10308	SCREW, CAP 1/2-20 X 1-1/2	1
9	10322	SCREW, CAP 1/2-20 X 2	1
10	10312	WASHER, FLAT 1/2 SAE ZINC	6
11	10205	NUT, HEX LOCK 1/2-20 ZINC	2
12	10324	SCREW, CAP 1/2-13 X 3-1/2	4
13	10312	WASHER, FLAT 1/2 SAE ZINC	4
14	10045	WASHER, LOCK 1/2 ZINC	4
15	10417	NUT, HEX 1/2-13 ZINC	4
16	10356	SCREW, CAP 1/2-13 X 1-1/2	2
17	10312	WASHER, FLAT 1/2 SAE ZINC	4
18	10045	WASHER, LOCK 1/2 ZINC	2
19	10417	NUT, HEX 1/2-13 ZINC	2
20	10373	BOLT, TAP 1/2-13 X 5 (FULL THREAD)	2
21	10417	NUT, HEX 1/2-13 ZINC	2
22	50710	TOGGLE PAD 7/8"D X 15/16"H X 1/2-13	2
23	50544	ARM, IDLER, SS-26	1
24	10393	SCREW, CAP 3/8-24 X 2-1/2	1
25	50115	IDLER PULLEY 3"OD X 1GR.AB X 3/8"B	1
26	10113	SPACER, STEEL 9/16OD X 3/8ID X 7/32	2
27	10004	NUT, HEX LOCK 3/8-24 ZINC	2
28	10025	WASHER, FLAT 3/8 SAE ZINC	2
29	50074	SPRING, EXT. 1"OD X 3-15/16	1


EQUIPMENT DEVELOPMENT COMPANY, INC.

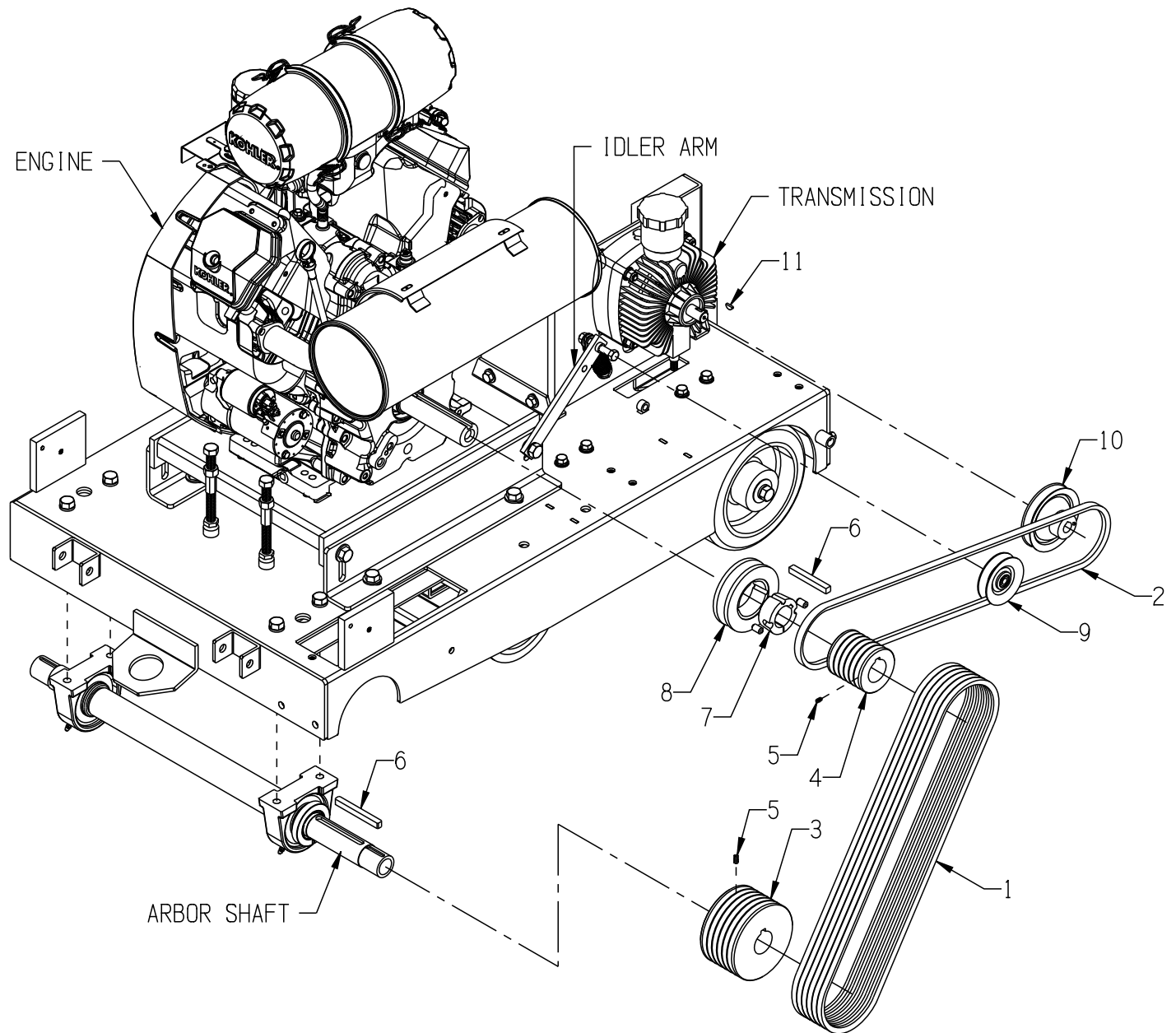
100 Thomas Johnson Drive, Frederick, MD 21702-4600 USA
 Phone: 800-638-3326 or 301-663-1600 • Fax: 800-447-3326 or 301-663-1607
 Website: www.edcoinc.com • E-mail: sales@edcoinc.com

Printed in USA

JWA ©2016

Page 27

ILLUSTRATION 15: BELT DRIVE GROUPING



PARTS LISTING - ILLUSTRATION 15: BELT DRIVE GROUPING

ITEM #	PART #	DESCRIPTION	QTY.
1	10228 50498	BELT (ARBOR) SEE CHART 3VX-450 3VX-425	6
2	10284	BELT A-55 (TRANSMISSION)	1
3	50724 50725 10512 10511	SHEAVE (ARBOR) SEE CHART BELOW & ILLUS. 7, ITEM 5 5.30"OD X 6GR.3V X SK (REQUIRES BUSHING) BUSHING, SHEAVE SK X 1-7/16"BORE 4.80"OD X 6GR.3V X 1-7/16"B 3.65"OD X 6GR.3V X 1-7/16"B	1
4	10510	SHEAVE 2.8"OD X 6GR.3V X 1-7/16"B (ENGINE)	1
5	11854	SCREW, SET 10-32 X 1/2	8
6	10074	KEY 3/8SQ X 3-1/2	2
7	10531	BUSHING, TAPER-LOCK 1610 1-7/16"B	1
8	10528	SHEAVE 4.15"OD X 1GR.AB X TPR-LOCK	1
9	50115	IDLER PULLEY 3"OD X 1GR.AB X 3/8"B (SEE ILLUS. 14 , ITEM 25)	1
10	50062	SHEAVE, TRANS. 4"OD X 1GR. X .671"B (SEE ILLUS. 4 , ITEM 38)	1
11	50071	KEY, WOODRUFF 1/8 X 1/2 (#404)	1

MODEL SS26-35K BELT DRIVE SPECIFICATION CHART

ENGINE TYPE	ENGINE RPM	BLADE DIAMETER	BLADE SPEED (RPM)	ENGINE SHEAVE	ARBOR SHEAVE	ARBOR BELT (6 REQ'D.)	TRANSMISSION BELT
KOHLER GASOLINE CH980-3000 35 HP	3600	14" – 16"	2750	2.80" (10510)	3.65" (10511)	3VX425 (50498)	A55 (10284)
		18" – 20"	2100		4.80" (10512)	3VX450 (10228)	
		24" – 26"			5.30" (50724)		
		30"	1900				

**EQUIPMENT DEVELOPMENT COMPANY, INC.**

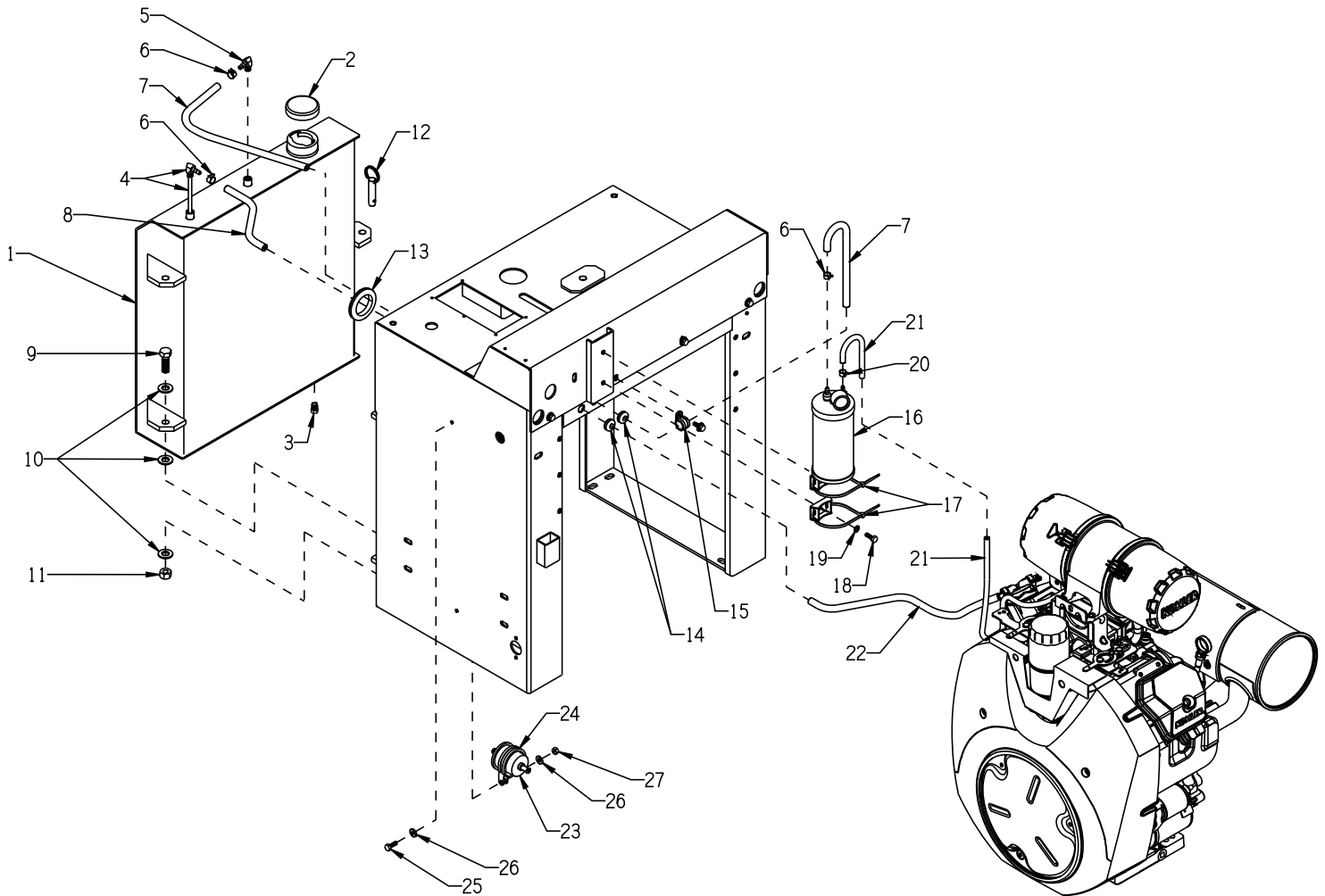
100 Thomas Johnson Drive, Frederick, MD 21702-4600 USA
 Phone: 800-638-3326 or 301-663-1600 • Fax: 800-447-3326 or 301-663-1607
 Website: www.edcoinc.com • E-mail: sales@edcoinc.com

Printed in USA

JWA ©2016

Page 29

ILLUSTRATION 16: FUEL TANK GROUPING



PARTS LISTING - ILLUSTRATION 16: FUEL TANK GROUPING			
ITEM #	PART #	DESCRIPTION	QTY.
1	50504	TANK, FUEL 6.4 GAL. SS-26	1
2	61081	CAP, FUEL TANK W/ VITON GASKET	1
3	11650	PIPE PLUG 1/8 NPT (BRASS)	1
4	50309	TUBE, FUEL PICK-UP 19-3/4", SS26	1
5	10771	BARB ELBOW 90, 1/4HOSE X 1/8MPT	1
6	10763	CLAMP, HOSE, SPRING-BAND 7/16" RED	6
7	10948	TUBING, EVAP LOW PERM. FUEL 1/4"ID X 44"L	3.67 FT.
8	10948	TUBING, EVAP LOW PERM. FUEL 1/4"ID X 15"L	1.25 FT
9	10308	SCREW, CAP 1/2-20 X 1-1/2	2
10	10312	WASHER, FLAT 1/2 SAE ZINC	6
11	10205	NUT, HEX LOCK 1/2-20 ZINC	2
12	10125	PIN, DETENT RING 1/2 X 1-1/2 E.L.	1
13	51253	GROMMET 1-45/64ID X 1/8GRV. X 2GD	1
14	57148	GROMMET 3/8ID X 1/8GRV. X 5/8GD (I.D. OPENED UP FOR FUEL LINE)	2
15	11565	CLAMP, LOOM, 5/8" (SAE SIZE 10)	1
16	51298	CANISTER, CARBON 468935A FOR KOHLER	1
17	10982	TIE, CABLE, BLACK NYLON 11-1/4"	2
18	10834	SCREW, CAP 1/4-20 X 1/2 ZINC	2
19	10451	WASHER, LOCK, INT. TOOTH 1/4"	2
20	10762	CLAMP, HOSE, SPRING-BAND 3/8" GREEN	2
21	15259	TUBING, EVAP LOW PERM. FUEL 3/16"ID X 21"L	1.75 FT.
22	10948	TUBING, EVAP LOW PERM. FUEL 1/4"ID X 18"L	1.5 FT.
23	15116	FILTER, FUEL 1/4" IN LINE	1
24	11566	CLAMP, LOOM, 1-5/8"	1
25	10018	SCREW, CAP 1/4-20 X 3/4	1
26	10602	WASHER, FLAT 1/4 SAE ZINC	2
27	10861	NUT, KEPS LOCK 1/4-20 ZINC	1


EQUIPMENT DEVELOPMENT COMPANY, INC.

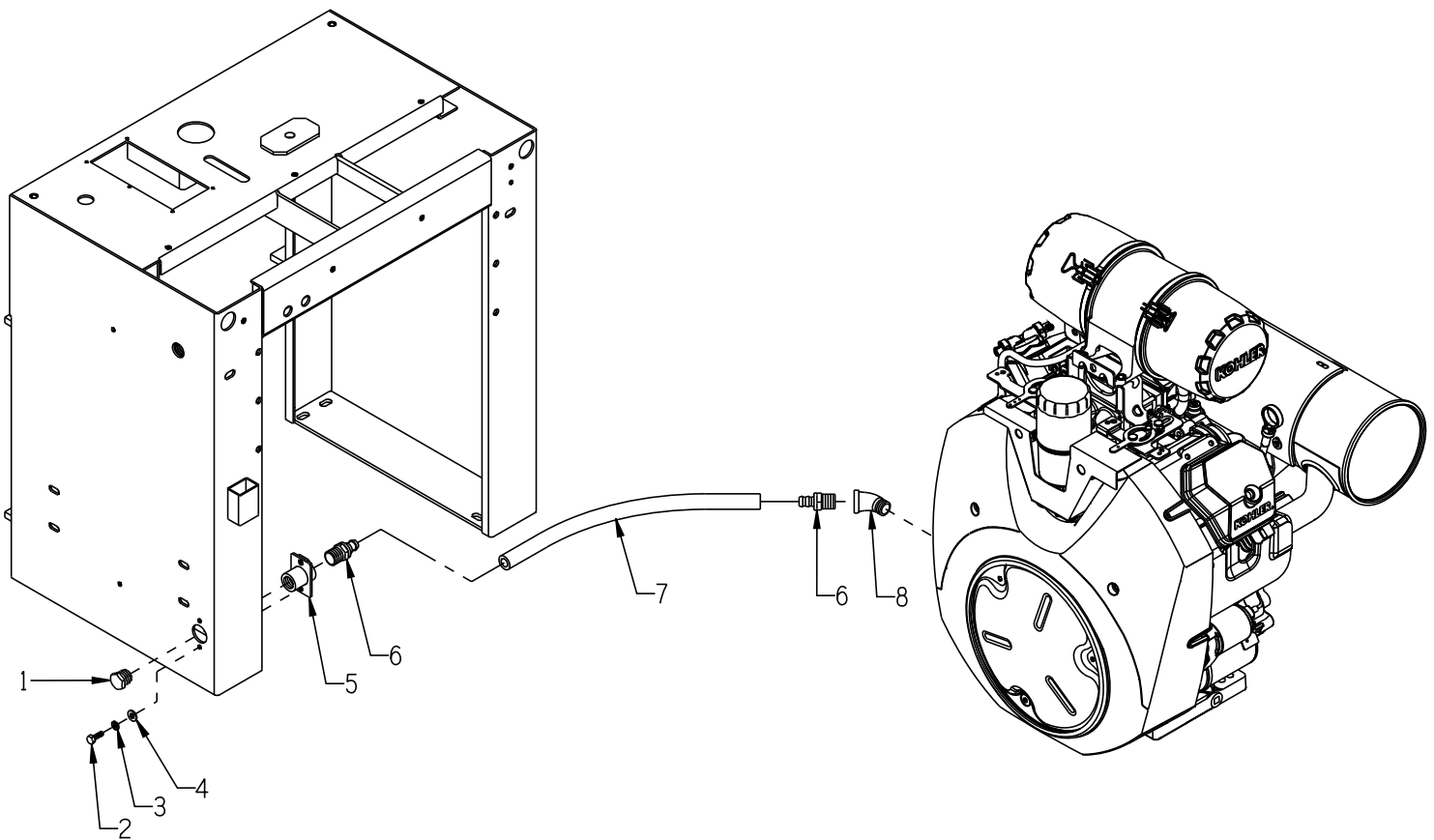
100 Thomas Johnson Drive, Frederick, MD 21702-4600 USA
 Phone: 800-638-3326 or 301-663-1600 • Fax: 800-447-3326 or 301-663-1607
 Website: www.edcoinc.com • E-mail: sales@edcoinc.com

Printed in USA

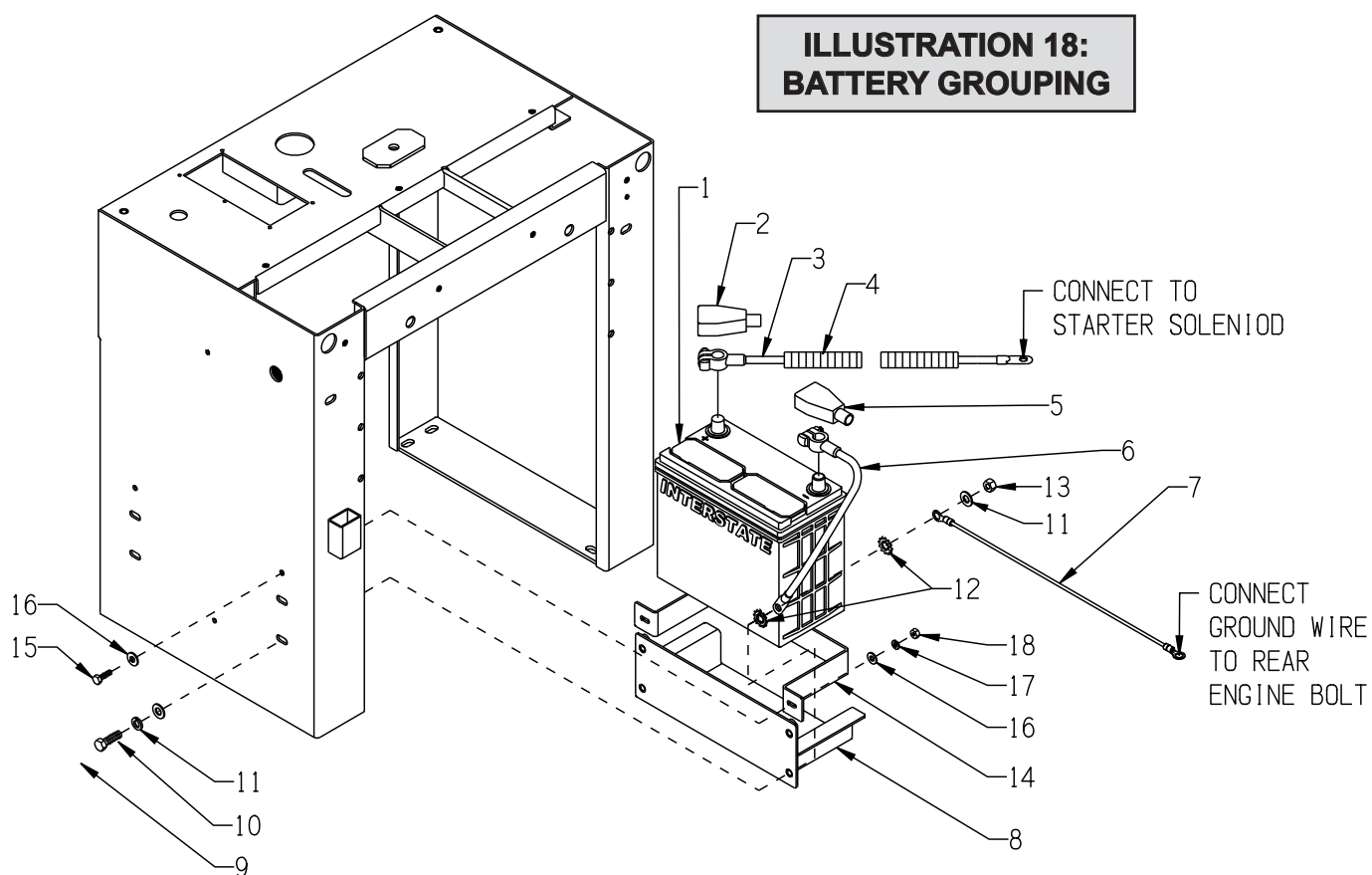
JWA ©2016

Page 31

ILLUSTRATION 17: OIL DRAIN GROUPING



ITEM #	PART #	DESCRIPTION	QTY.
1	50552	PIPE PLUG 1/2 NPT (BRASS)	1
2	10018	SCREW, CAP 1/4-20 X 3/4	2
3	10038	WASHER, LOCK 1/4 ZINC	2
4	10602	WASHER, FLAT 1/4 SAE ZINC	2
5	50604	BRACKET, OIL DRAIN, SS26	1
6	80061	BARB, PUSH-ON 1/2HOSE X 1/2MPT	2
7	50659	HOSE, PUSH-ON 1/2"ID X 16-1/2"L	1
8	10734	ELBOW, STREET 1/2NPT X 45 (BLACK)	1

**ILLUSTRATION 18:
BATTERY GROUPING**


ITEM #	PART #	DESCRIPTION	QTY.
1	50321	BATTERY 12 VOLT/500 CCA(POST TERM.) INTERSTATE MT-51R	1
2	10928	INSULATOR, BAT.TERM.POST (RED)	1
3	57055	CABLE, BATTERY 4GA. X 53" (RED)	1
4	50739	LOOM, FLEX 5/8 X 52"L, SS26-35K	1
5	10929	INSULATOR, BAT.TERM.POST (BLACK)	1
6	50323B	CABLE, BATTERY 4GA. X 12" (BLACK)	1
7	50740	WIRE, GROUND, 10GA X 16", SS26-35K	1
8	50677	TRAY, BATTERY, SS26-35K/15B NOTE: TRAY FOR INTERSTATE MT-51R BATTERY.	1
9	10333	SCREW, CAP 3/8-16 X 1-1/4	1
	10907	SCREW, CAP 3/8-16 X 3/4	3
10	10811	WASHER, LOCK 3/8 ZINC	4
11	10025	WASHER, FLAT 3/8 SAE ZINC	5
12	11862	WASHER, LOCK, INT./EXT. TOOTH 3/8"	2
13	10404	NUT, HEX 3/8-16 ZINC	1
14	50678	STRAP, BATTERY, SS26-35K/15B NOTE: STRAP FOR INTERSTATE MT-51R BATTERY.	1
15	10031	SCREW, CAP 1/4-20 X 1	2
16	10602	WASHER, FLAT 1/4 SAE ZINC	4
17	10038	WASHER, LOCK 1/4 ZINC	2
18	10015	NUT, HEX LOCK 1/4-20 ZINC	2


EQUIPMENT DEVELOPMENT COMPANY, INC.

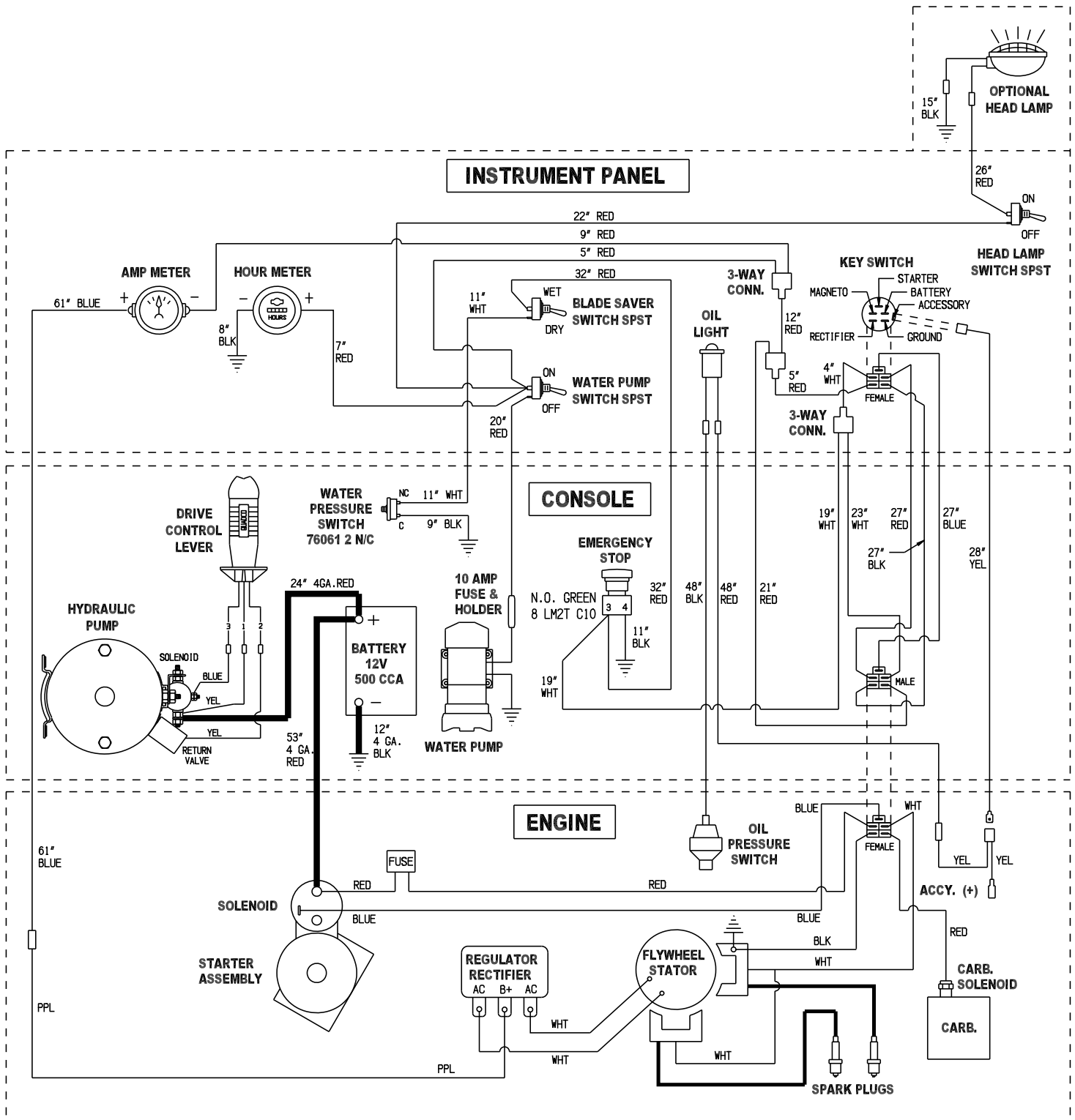
100 Thomas Johnson Drive, Frederick, MD 21702-4600 USA
 Phone: 800-638-3326 or 301-663-1600 • Fax: 800-447-3326 or 301-663-1607
 Website: www.edcoinc.com • E-mail: sales@edcoinc.com

Printed in USA

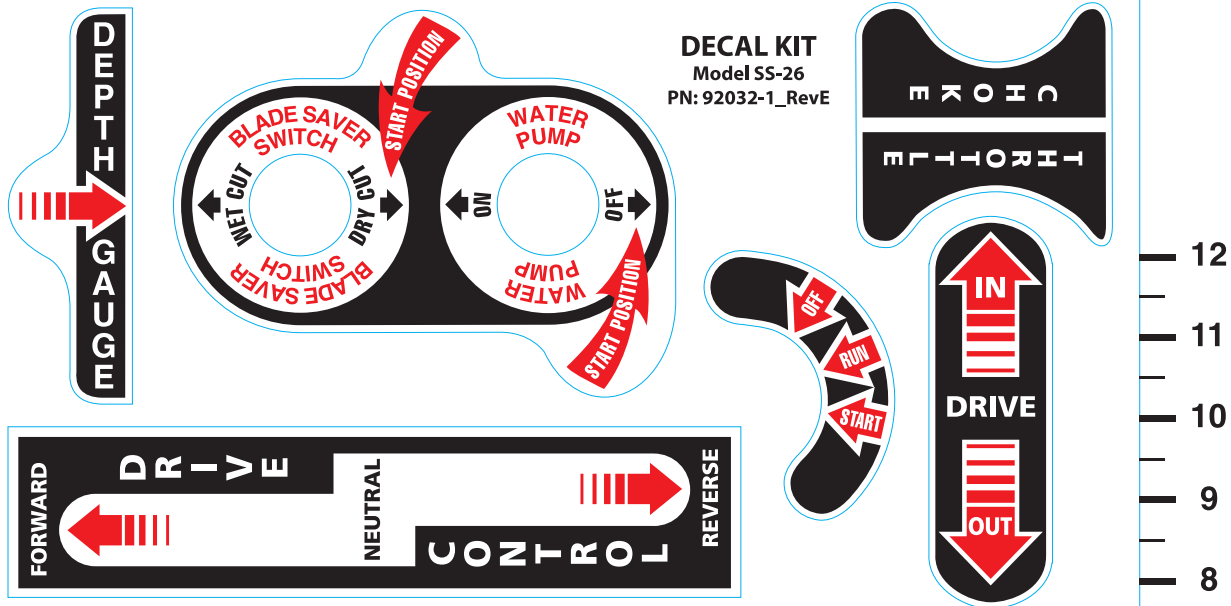
JWA ©2016

Page 33

WIRING DIAGRAM FOR SS26-35K



DECAL SHEET P/N 92032-1

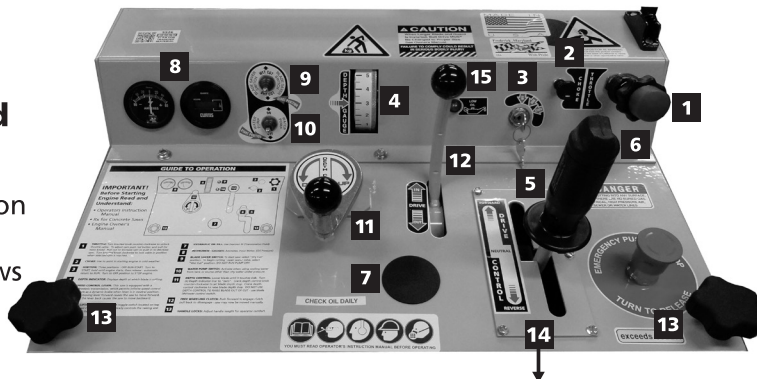


GUIDE TO OPERATION

IMPORTANT!

Before Starting Engine Read and Understand:

- Operators Instruction Manual
- Rx for Concrete Saws
- Engine Owner's Manual



- 1 THROTTLE:** Turn knurled knob counter-clockwise to unlock throttle cable. To adjust rpm push red button and pull (or twist knob). Pull out to increase rpm or push in to decrease rpm. Turn knurled knob clockwise to lock cable in positions when selected rpm is reached. Machine should always be ran at full throttle.
- 2 CHOKE:** Use to assist in starting engine in cold weather.
- 3 IGNITION:** Three positions - OFF-RUN-START. Turn to START, hold until engine starts, then release - automatic return to RUN. Turn to OFF position to STOP engine.
- 4 DEPTH INDICATOR:** Displays depth at which blade is cutting. Step cut for cuts deeper than 3".
- 5 SPEED CONTROL LEVER:** This saw is equipped with a hydrostatic transmission, which permits infinite speed control and acts as a dynamic brake when lever is in neutral position. Slowly moving lever forward causes the saw to move forward. Pulling the lever back causes the saw to move backward.
- 6 BLADE LIFT/LOWER CONTROL:** A toggle switch located on top of (5) Speed Control Lever hydraulically controls the raising and lowering of the blade.
- 7 HYDRAULIC OIL FILL:** Use Dextron III (Transmission Fluid)
- 8 INSTRUMENT GAUGES:** Ammeter, Hour Meter.
- 9 BLADE SAVER SWITCH:** To start saw: select "Dry Cut" position. To begin cutting: open water valve, select "Wet Cut" position. DO NOT RUN PUMP DRY.
- 10 WATER PUMP SWITCH:** Activate when using cooling water from tank or source other than city water under pressure.
- 11 DEPTH CONTROL:** Lower blade until it touches slab. Adjust (4) Depth Indicator Dial to "zero". Crank depth control knob counter-clockwise to set blade depth stop. Crank depth control clockwise to raise blade depth stop. DO NOT USE DEPTH CONTROL TO RAISE BLADE OUT OF CUT - use blade lift/lower control switch.
- 12 FREE WHEELING CLUTCH:** Push forward to engage clutch pull back to disengage - saw may be moved manually when clutch is disengaged.
- 13 HANDLE LOCKS:** Adjust handle length for operator comfort. Retighten after adjustment.
- 14 TRACKING:** Saw is preset at the factory. If saw pulls left or right while cutting contact your rental agent for adjustment. See operators manual for instructions.
- 15 LOW OIL LIGHT INDICATOR**

SS-26



EQUIPMENT DEVELOPMENT COMPANY, INC.
100 Thomas Johnson Drive, Frederick, MD 21702-4600 USA
Phone: 800-638-3326 or 301-663-1600 • Fax: 800-447-3326 or 301-663-1607
Website: www.edcoinc.com • E-mail: sales@edcoinc.com

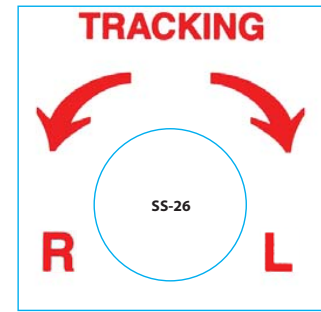
Printed in USA

JWA ©2016

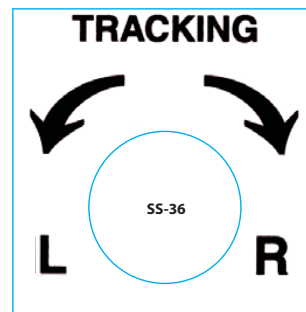
Page 35

DECAL SHEET P/N 92032-2

DECAL KIT Model SS-26 Model SS-36 PN: 92032-2 RevB



CHECK OIL DAILY

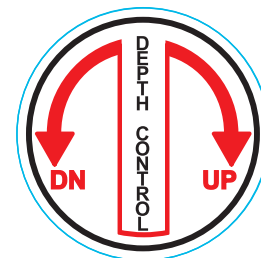
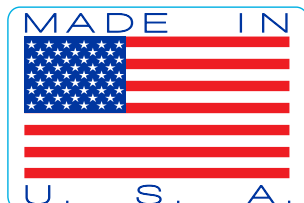
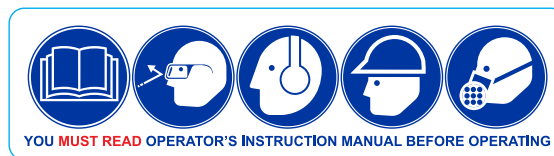
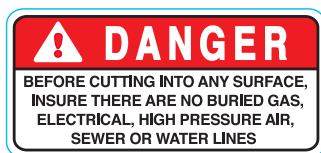


DECAL SHEET P/N 92032-3

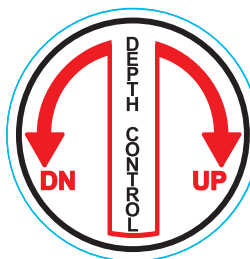
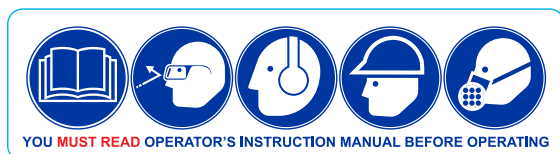
P/N 92032-3 RevC

SS-26

14x17 Sheet



CALIFORNIA PROPOSITION 65 WARNING
The engine exhaust from this product contains chemicals known to the State of California to cause cancer, birth defects or other reproductive harm.



DIESEL FUEL



EQUIPMENT DEVELOPMENT COMPANY, INC.

100 Thomas Johnson Drive, Frederick, MD 21702-4600 USA

Phone: 800-638-3326 or 301-663-1600 • Fax: 800-447-3326 or 301-663-1607

Website: www.edcoinc.com • E-mail: sales@edcoinc.com

Printed in USA

JWA ©2016

Page 37

THIS PAGE WAS LEFT BLANK INTENTIONALLY



LIMITED EQUIPMENT WARRANTY OF SALE - TERMS & CONDITIONS

Equipment Development Company, Inc. herein referred to as EDCO (Seller) warrants that each new unit manufactured by EDCO to be free from defects in material and workmanship in normal use and service for a period of (1) one year (except for the cutter drum assembly on all model concrete/asphalt planes, in which case the warranty period shall be 90 days) from date of shipment to the original retail or equipment rental center owner.

Accessories or equipment furnished and installed on the product by EDCO but manufactured by others, including, but not limited to engines, motors, electrical components, transmissions etc., shall carry the accessory manufacturers own warranty.

EDCO will, at its option, repair or replace, at the EDCO factory or at a point designated by EDCO, any part which shall appear to the satisfaction of EDCO inspection to have been defective in material or workmanship.

EDCO reserves the right to modify, alter and improve any part or parts without incurring any obligation to replace any part or parts previously sold without such modified, altered or improved part or parts.

This warranty is in lieu of and excludes all other warranties, expressed, implied, statutory, or otherwise created under applicable law including, but not limited to the warranty of merchantability and the warranty of fitness for a particular purpose in no event shall seller or the manufacturer of the product be liable for special, incidental, or consequential damages, including loss of profits, whether or not caused by or resulting from the negligence of seller and/or the manufacturer of the product unless specifically provided herein. In addition, this warranty shall not apply to any products or portions thereof which have been subjected to abuse, misuse, improper installation, maintenance, or operation, electrical failure or abnormal conditions and to products which have been tampered with, altered, modified, repaired, reworked by anyone not approved by seller or used in any manner inconsistent with the provisions of the above or any instructions or specifications provided with or for the product.

FORCE MAJEURE

Seller's obligation hereunder are subject to, and Seller shall not be held responsible for, any delay or failure to make delivery of all or any part of the Product due to labor difficulties, fires, casualties, accidents, acts of the elements, acts of God, transportation difficulties, delays by a common carrier, inability to obtain Product, materials or components or qualified labor sufficient to timely perform part of or all of the obligations contained in these terms and conditions, governmental regulations or actions, strikes, damage to or destruction in whole or part of manufacturing plant, riots, terrorist attacks or incidents, civil commotions, warlike conditions, flood, tidal waves, typhoon, hurricane, earthquake, lightning, explosion or any other causes, contingencies or circumstances within or without the United States not subject to the Seller's control which prevent or hinder the manufacture or delivery of the Products or make the fulfillment of these terms and conditions impracticable. In the event of the occurrence of any of the foregoing, at the option of Seller, Seller shall be excused from the performance under these Terms and Conditions, or the performance of the Seller shall be correspondingly extended.

This document sets forth the terms and conditions pursuant to which the purchaser ("Purchaser") will purchase and Equipment Development Co. Inc. ("Seller") will sell the products, accessories, attachments (collectively the Products) ordered by the Purchaser. These terms and conditions shall govern and apply to the sale of Seller's Products to Purchaser, regardless of any terms and conditions appearing on any purchase order or other forms submitted by Purchaser to Seller, or the inconsistency of any terms therein and herein.

1. PRICE

All prices set forth on any purchase order or other document are F.O.B. Sellers facility or distribution point, as may be determined by Seller (F.O.B. Point). All prices are exclusive of any and all taxes, including, but not limited to, excise, sales, use, property or transportation taxes related to the sale or use of the Products, now or hereafter imposed, together with all penalties and expenses. Purchaser shall be responsible for collecting and/or paying any and all such taxes, whether or not they are stated in any invoice for the Products. Unless otherwise specified herein, all prices are exclusive of inland transportation, freight, insurance and other costs and expenses relating to the shipment of the Products from the F.O.B. point to Purchaser's facility. Any prepayment by Seller of freight insurance and other costs shall be for the account of Purchaser and shall be repaid to Seller.

2. PAYMENT TERMS

Payment terms are as follows. 2% 10 days (to approved and qualified accounts). Net 30 days. This is a cash discount for invoices paid within 10 days after the invoice date, regardless of date of receipt of shipment. This is not a trade discount and will not be granted to accounts that do not adhere to stated terms.

*All past due accounts are subject to a late payment fee of 1.5% per month or a maximum allowed by law if different, along with the expenses incidental to collection including reasonable attorney's fees and costs.

*Seller reserves the right to hold shipments against past due accounts.

*Seller reserves the right to alter payment terms.

3. FREIGHT TERMS

All shipments will be made F.O.B. shipping point as designated in these Terms and Conditions, and title shall pass at the F.O.B. point. Delivery to the initial common carrier shall constitute delivery to the Purchaser. Any claims for loss or damage during shipment are to be filed with carrier by the Purchaser. Seller will not assume responsibility for the performance of the carrier.

Back orders will be shipped in the most practical fashion with charges consistent with our freight policy established with the original order. UPS, FED EX, MAIL or shipments by other couriers are subject to the same terms and conditions as outlined in paragraph #3 "Freight Terms".

4. DELIVERY, DAMAGES, SHORTAGES

Seller shall use reasonable efforts to attempt to cause the Products to be delivered as provided for in these Terms & Conditions. Delivery to the initial common carrier shall constitute the delivery to the Purchaser. Seller's responsibility, in so far as transportation risks are concerned ceases upon the delivery of the Products in good condition to such carrier at the F.O.B. point and all the Products shall be shipped at the Purchaser's risk. Seller shall not be responsible or liable for any loss of income and/or profits, or incidental, special, consequential damages resulting from Seller's delayed performance in shipment and delivery.

5. RETURN OF DEFECTIVE PRODUCTS

Defective or failed material shall be held at the Purchaser's premises until authorization has been granted by Seller to return or dispose of Products. Products that are to be returned for final inspection must be returned Freight Prepaid in the most economical way. Credit will be issued for material found to be defective upon Seller's inspection based on prices at time of purchase.

6. PRODUCTS ORDERED IN ERROR

Products may be returned, provided that claim is made and Seller is notified within 7 days of receipt of Products, and the Products are in original buyer's possession not more than 30 days prior to return, subject to Seller's approval. If Products are accepted for return, they must be Freight Prepaid and buyer will be charged a minimum of 15% restocking charge, plus a charge back for outbound freight charges if the original order was shipped prepaid. Returns are not accepted for any Products that are specifically manufactured to meet the buyer's requirement of either specifications or quantity.

AGREEMENTS

These Terms and Conditions constitute the entire agreement between Seller and Purchaser as it relates to terms and conditions of sale, and supersedes any and all prior oral or written agreements, correspondence, quotations or understandings heretofore in force between the parties relating to the subject matter hereof. There are no agreements between Seller and Purchaser with respect to the Product herein except those specifically set forth in and made part of these terms and conditions. Any additional terms, conditions and/or prices are rejected by Seller.

These terms and conditions may be modified, cancelled or rescinded only by a written agreement of both parties executed by their duly authorized agents.

USE ONLY GENUINE EDCO PARTS & ACCESSORIES
For your own safety, the safety of others and the life of your machine.
Equipment Development Company, Inc.