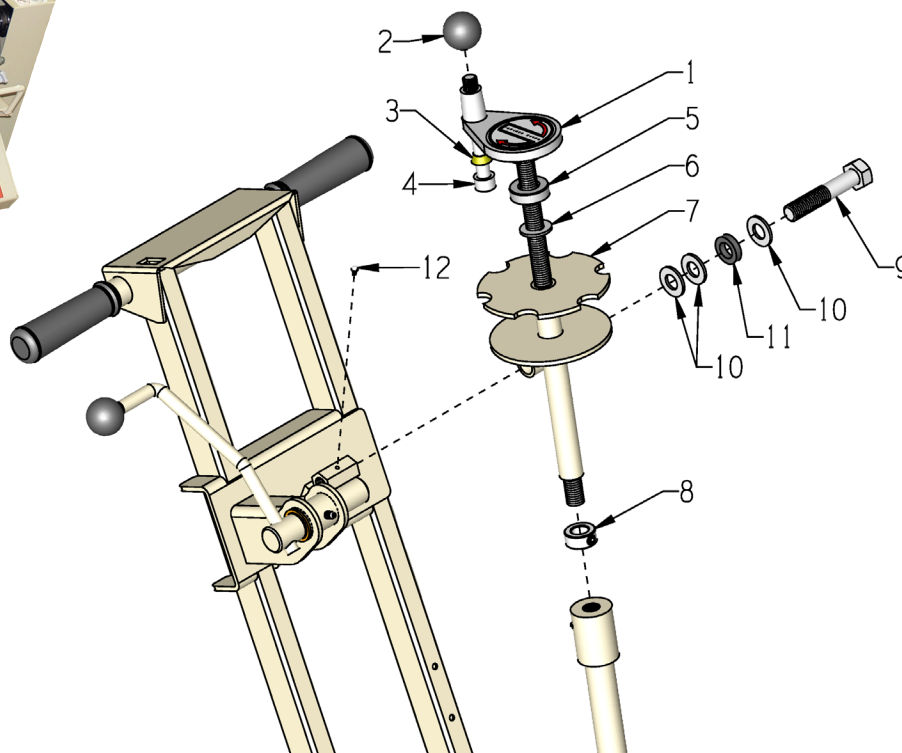




# MODEL CPM-8

## LINKAGE SUPPORT RETROFIT KIT #101278K

NEW ASSEMBLY TO BE USED FOR FINER DEPTH ADJUSTMENT



ITEMS 1 THRU 8 ARE SUB-ASSEMBLED.

ITEMS 9 THRU 12 ARE LOOSE PARTS FOR ASSEMBLING TO CAM ON HANDLE.

ITEM #	PART #	DESCRIPTION	QTY.
1	41012	HANDWHEEL, SMALL W/ 5/8-8 X 15" ROD NOTE: INCLUDE DEPTH CONTROL DECAL	1
2	14023	KNOB, BALL 1-3/8 W/ 1/2-13THD, BLK.	2
3	50550	SLEEVE, BRASS 1/2" TAPERED	1
4	10411	SCREW, SKT. HD. CAP 1/2-13 X 4 ZINC	1
5	85005	BEARING, THRUST BALL 5/8	1
6	10073	WASHER, FLAT 5/8 SAE ZINC	1
7	101278	LINKAGE SUPPORT WELDMENT, CPM-8	1
8	10096	COLLAR, LOCKING 5/8" ID	1
9	10359	SCREW, CAP 5/8-11 X 3-1/4	1
10	10073	WASHER, FLAT 5/8 SAE ZINC	3
11	79035	BUSHING, RUBBER 1-1/16 X 5/8 X 1/4	1
12	10127	SCREW, DRIVE 1/8 X 1/4" L	1

**SEE PAGE 2 FOR INSTALLATION INSTRUCTIONS**

## CPM-8 AND CPM-10

### INSTRUCTIONS FOR REPLACING THE DEPTH CONTROL WITH THE NEW FEATHER STYLE DEPTH CONTROL

#### Disassembly:

- 1 - Using a chisel and hammer, knock the head off the drive screw locking the mounting bolt in place.
- 2 - Using a 1/8 drill bit, drill out the remaining drive screw at no more than 1/4" in depth.  
\*\* This step is important to keep from damaging the internal threads when the mounting hardware is removed. \*\*
- 3 - Remove the mounting hardware.
- 4 - With the depth control now disconnected from the engage/disengage assembly, unscrew the depth control hand wheel from the lower linkage.

#### Assembly:

- 5 - Before Installing the new mounting hardware, it may be necessary to chase the threads in the hex coupling with a 5/8-11 tap to clean up the threads if they were damaged while removing the 5/8-11 x 3-1/4 capscrew in step #3.
  - 6 - Screw the new depth control hand wheel into the lower linkage.
  - 7 - Install the new mounting hardware to connect the feather depth control to the engage/disengage assembly in the same pattern as the hardware removed in step #3.
  - 8 - Insert the new drive screw into the 1/8" hole where the old drive screw was removed and drilled out. Using a hammer drive the drive screw into place.
  - 9 - Using the grease fitting on the engage/disengage assembly, add grease.
- Feather Depth Control Assembly is complete.



#### EQUIPMENT DEVELOPMENT COMPANY, INC.

100 Thomas Johnson Drive, Frederick, MD 21702-4600 USA  
Phone: 800-638-3326 or 301-663-1600 • Fax: 800-447-3326 or 301-663-1607  
Website: [www.edcoinc.com](http://www.edcoinc.com) • E-mail: [techsupport@edcoinc.com](mailto:techsupport@edcoinc.com)

Printed in USA  
©2023