



REVISED STARTING  
SERIAL # 240710118

## PARTS LIST MANUAL MODEL SS-30E



### Electric Powered Self-Propelled Concrete & Asphalt Saw

#### SAW SET-UP OPTIONS

SKU NUMBER	BLADE GUARD SIZE	BLADE SPEED
34300-30-460	30 INCH	1755 RPM
34300-30-50/415	30 INCH	1450 RPM

**READ AND UNDERSTAND THE OPERATOR'S SAFETY MANUAL THOROUGHLY  
BEFORE ATTEMPTING TO OPERATE THIS EQUIPMENT.**

Death or serious injury could occur if this machine is used improperly.

Machine specific Operator's Instruction Manuals are offered at [edcoinc.com/customer-support/parts-and-manuals](http://edcoinc.com/customer-support/parts-and-manuals)



#### EQUIPMENT DEVELOPMENT COMPANY, INC.

100 Thomas Johnson Drive, Frederick, MD 21702-4600 USA  
Phone: 800-638-3326 or 301-663-1600 • Fax: 800-447-3326 or 301-663-1607  
Website: [www.edcoinc.com](http://www.edcoinc.com) • E-mail: [techsupport@edcoinc.com](mailto:techsupport@edcoinc.com)

Printed in USA  
JWA ©2024

**SAFETY INFORMATION****SAFETY MESSAGES**

• Safety Instructions are preceded by a graphic alert symbol of DANGER, WARNING, or CAUTION.



Indicates an imminent hazard which, if not avoided, will result in death or serious injury.



Indicates an imminent hazard which, if not avoided, can result in death or serious injury.



Indicates hazards which, if not avoided, could result in serious injury and or damage to the equipment.

**GASOLINE / PROPANE POWERED EQUIPMENT**

• Engine exhaust from this product contains chemicals known to the State of California to cause cancer, birth defects or other reproductive harm.



• Tilting a gasoline powered machine fitted with an EPA approved vented charcoal filter gas cap, beyond 20° can cause fuel leakage. If a leak occurs, do not

start or run the engine until the leak is fixed. Eliminate all other ignition sources in the immediate area (no smoking, flares, sparks or flames). Use approved gasoline absorbing material to contain the fuel leakage. Then use clean, non-sparking tools to collect absorbed materials then dispose of these contaminants properly.



• Gasoline is extremely flammable and poisonous. It should only be dispensed in well ventilated areas, and with a cool engine.

• Small gasoline engines produce high concentrations of carbon monoxide (CO) example: a 5 HP 4 cycle engine operation in an enclosed 100,000 cu. ft. area with only one change of air per hour is capable of providing deadly concentrations of CO in less than fifteen minutes. Five changes of air in the same area will produce noxious fumes in less than 30 minutes. Gasoline powered equipment should not be used in enclosed or partially enclosed areas. Symptoms of CO poisoning include, head-ache, nausea, weakness, dizziness, visual problems and loss of consciousness. If symptoms occur - get into fresh air and seek medical attention immediately.

- Never refuel a hot engine or an engine while it is running.
- Engines are shipped from factory without fuel/oil.



• Propane is extremely flammable and is heavier than air and tends to settle in low areas where a spark or flame could ignite gas. DO NOT start or operate this propane engine in a poorly ventilated area where leaking propane gas could accumulate and endanger safety of persons in area. If headache develops, shut off machine. Have it checked for carbon monoxide emissions by a qualified technician before using it again. To ensure personal safety, installation and repair of propane fuel supply systems must be performed only by qualified technicians. Carbon monoxide emissions from this machine are greatly increased due to a dirty combustion air cleaner.

**ELECTRICAL POWERED EQUIPMENT**

Extreme care must be taken when operating electric models with water present: Ensure power cord is properly grounded, is attached to a Ground-Fault-Interrupter (GFI) outlet, and is undamaged.

- Check all electrical cables - be sure connections are tight and cable is continuous and in good condition. Be sure cable is correctly rated for both the operating current and voltage of this equipment.
- Improper connection of the equipment grounding conductor can result in a risk of electric shock. Check with qualified electrician or service person if there is any doubt as to whether the outlet is properly grounded. Adhere to all local codes and ordinances.
- NOTE: In the event of a malfunction or breakdown, grounding provides a path of least resistance for the electric current to dissipate. The motor is equipped with a grounded plug and must be connected to an outlet that is properly installed and properly grounded. DO NOT modify the plug provided on the motor. If the plug does not fit the outlet have a qualified electrician install the proper receptacle.

**ELECTRICAL POWERED EQUIPMENT CONTINUED**

- Do not disconnect power by pulling cord. To disconnect, grasp the plug, not the cord.
- Unplug power cord at the machine when not in use and before servicing.
- Switch motor OFF before disconnecting power.
- Never use frayed, damaged, taped or under rated extension cords. Electrical shock could result in death or serious injury to the operator and damage to the equipment.
- Assure you are using the proper extension cord length.

**GENERAL INSTRUCTIONS**

- Equipment should only be operated by trained personnel in good physical condition and mental health (not fatigued). The operator and maintenance personnel must be physically able to handle the bulk weight and power of this equipment.
- This is a one person tool. Maintain a safe operating distance to other personnel. It is the operators' responsibility to keep other people (workers, pedestrians, bystanders, etc.) away during operation. Block off the work area in all directions with roping, safety netting, etc. Failure to do so may result in others being injured by flying debris or exposing them to harmful dust and noise.
- This equipment is intended for commercial use only.
- For the operator's safety and the safety of others, always keep all guards in place during operation.
- Never let equipment run unattended.



- Personal Protection Equipment and proper safety attire must be worn when operating this machinery. The operator must wear approved safety equipment appropriate for the job such as hard hat and safety shoes when conditions require. Hearing protection **MUST** be used when operational noise levels of this equipment may exceed 85db. Eye protection **MUST** be worn at all times.



Keep body parts, loose clothing and accessories away from moving parts. Failure to do so could result in dismemberment or death.

- Do not modify the machine.
- Stop motor/engine when adjusting or servicing this equipment. Maintain a safe operating distance from flammable materials. Sparks from the cutting-action of this machine can ignite flammable materials or vapors.

**DUST WARNING**

Some dust created by power sanding, sawing, grinding, drilling, and other construction activities contains chemicals known to cause cancer, birth defects, or other reproductive harm. Materials being removed can be toxic or hazardous. A breathing respirator is required to help protect the operator.

Some examples of these chemicals are:

- Lead from lead-based paints.
- Crystalline silica from bricks, concrete and other masonry products. Your risk of exposure to these chemicals varies depending on how often you do this type of work. To reduce your risk: work in a well ventilated area, use a dust control system, such as an industrial-style vacuum, and wear approved personal safety equipment, such as a dust/particle respirator designed to filter out microscopic particles.
- See more on the importance of dust prevention and silica warnings at: [osha.gov/silica](http://osha.gov/silica)
- More concrete and silica dust suppression training and educational materials available at [edcoinc.com/silica-standards](http://edcoinc.com/silica-standards) or scan the QR code on page 5.
- Written exposure plans are provided at <http://www.edcoinc.com/written-exposure-control-plans/>



# PARTS LIST MANUAL

## MODEL SS-30E

### TABLE OF CONTENTS

<u>Section</u>	<u>Page Numbers</u>
Safety Information ! .....	2
How To Order Replacement Parts .....	3
Illustration 1: Frame Grouping .....	4, 5
Illustration 2: Lift Grouping .....	6, 7
Illustration 3: Rear Axle Grouping .....	8, 9
Illustration 4: Transmission, Drive Lever & Linkage Grouping .....	10, 11
Illustration 5: Clutch Lever & Linkage Grouping .....	12, 13
Illustration 6: Clutch Grouping .....	14, 15
Illustration 7: Arbor Grouping .....	16, 17
Illustration 8: Blade Guard Grouping .....	18, 19
Illustration 9: Water Pump Grouping .....	20, 21
Illustration 10: Instrument Panel, Console Front & Rear Panel Grouping .....	22
Illustration 11: Blade Depth Gauge Grouping .....	23
Illustration 12: Operating Controls .....	24
Illustration 13: Guide Bar Assembly .....	25
Illustration 14: Motor & Mount Grouping .....	26, 27
Illustration 15: Alternator Grouping .....	28
Illustration 16: Battery Grouping .....	29
Illustration 17: Belt Drive Grouping .....	30, 31
Illustration 18: Starter & E-Stop Switch Grouping .....	32, 33
Illustration 19: Emergency Stop Switch .....	34
Illustration 20: Advance Controls, Inc. (aci) Brand Start-Stop Starter Assembly ..	35
Wiring Diagram for 60Hz Model .....	36
Wiring Diagram for 60Hz Motor .....	37
Wiring Diagram for 50Hz Model .....	38
Wiring Diagram for 50Hz Motor .....	39
Decals Sheets .....	40, 41, 42
Limited Equipment Warranty of Sale .....	43
EDCO's Online Customer Support .....	44 Back Cover

#### HOW TO ORDER REPLACEMENT PARTS

- ☐ To insure product safety and reliability, always use genuine EDCO replacement parts when making repairs to the equipment.
- ☐ When calling for parts, specify the MODEL and SERIAL number of the machine, which can be found on the NAME PLATE. Keep that information in the space provided. In addition to this information, give part number, description, and quantity as listed on the parts list to your parts representative.
- ☐ Please note: Due to improvements and changes in the equipment, the illustrations shown may be different than the actual machine.

#### FILL IN INFORMATION BELOW

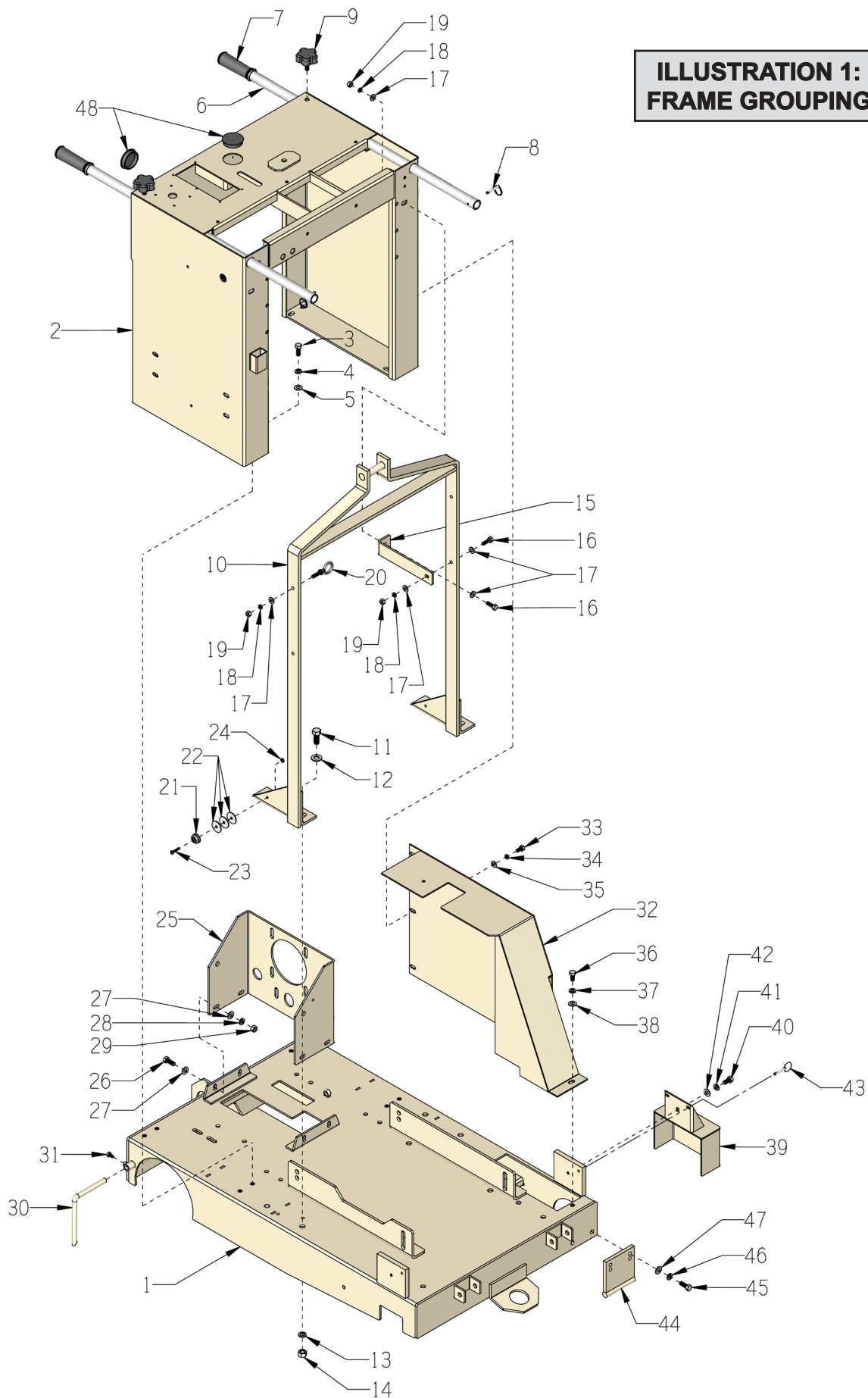
Date of Purchase \_\_\_\_\_

Model # \_\_\_\_\_

Serial # \_\_\_\_\_

SKU # \_\_\_\_\_

**ILLUSTRATION 1:  
FRAME GROUPING**

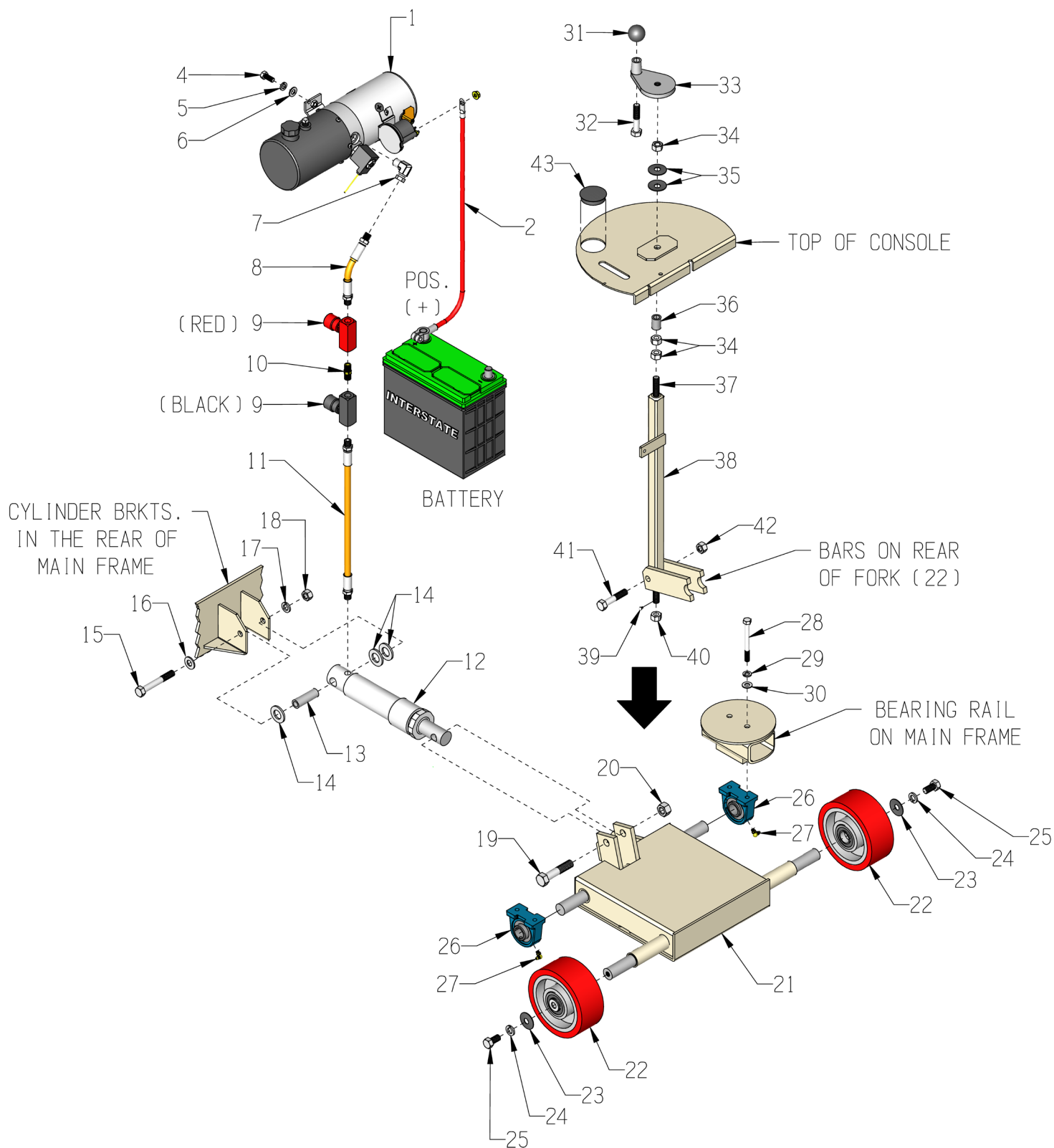




**PARTS LISTING - ILLUSTRATION 1: FRAME GROUPING**

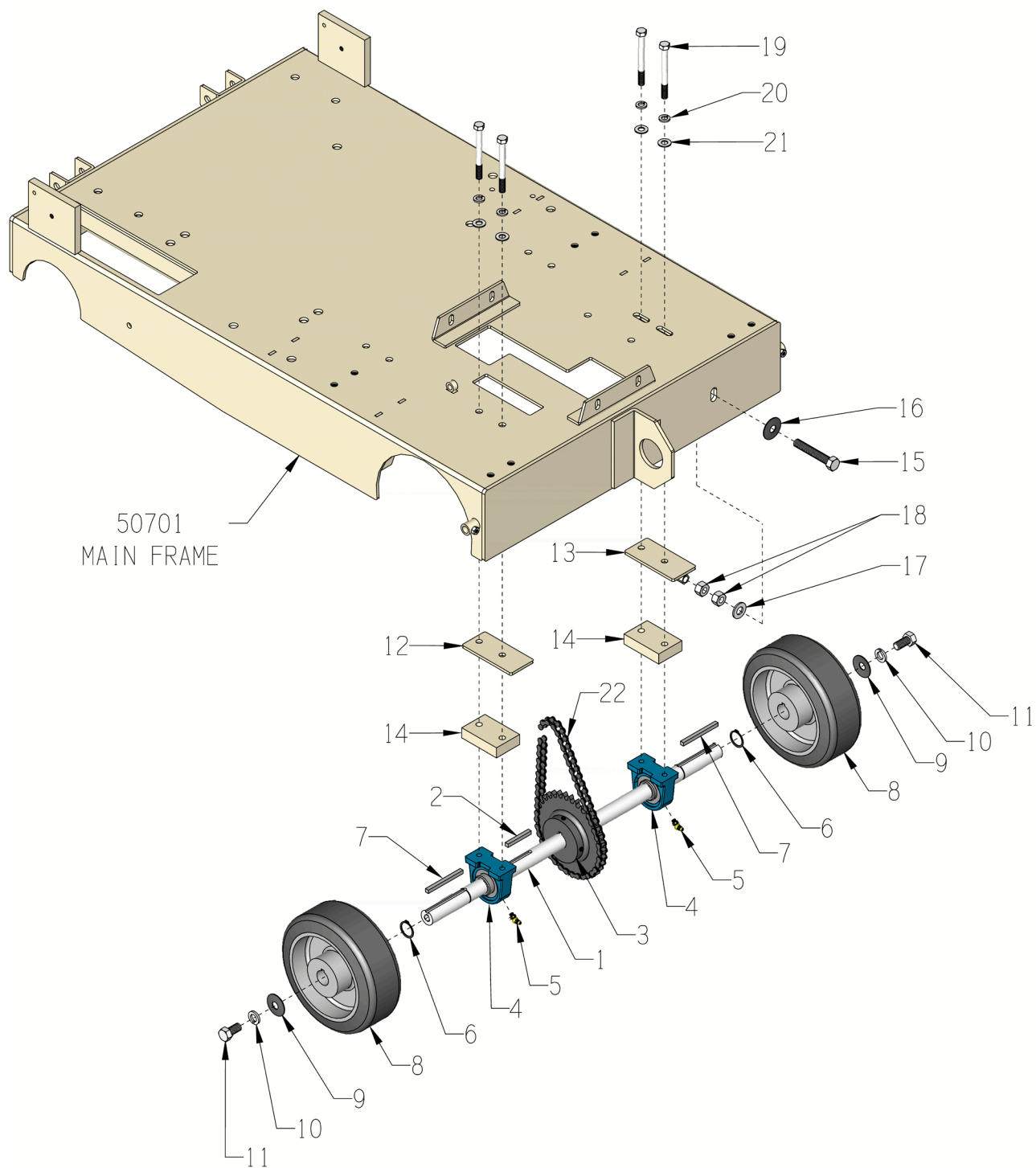
ITEM #	PART #	DESCRIPTION	QTY.	ITEM #	PART #	DESCRIPTION	QTY.
1	50701	MAIN FRAME, SS-30	1	24	10832	NUT, KEPS LOCK 10-32 ZINC	1
2	50650E	CONSOLE, SS-30E	1	25	50508	MOUNT, TRANSMISSION, SS-30	1
3	10055	SCREW, CAP 3/8-16 X 1 ZINC	8	26	10021	SCREW, CAP 3/8-24 X 1 ZINC	4
4	10811	WASHER, LOCK 3/8 ZINC	8	27	10025	WASHER, FLAT 3/8 SAE ZINC	8
5	10025	WASHER, FLAT 3/8 SAE ZINC	8	28	10811	WASHER, LOCK 3/8 ZINC	4
6	50522	HANDLE BAR 36", ZINC PLATED	2	29	10014	NUT, HEX 3/8-24 ZINC	4
7	10608	GRIP, HAND 1" MODEL AT	2	30	51011	GUIDE POINTER, REAR, SS	1
8	10145	PIN, DETENT RING 3/16 X 1-5/16	2	31	10834	SCREW, CAP 1/4-20 X 1/2 ZINC	1
9	51230	KNOB, STAR CLAMPING 3/8-16 X 1"STUD	2	32	50670	BELT COVER, SS-30E	1
10	50606E	BAIL, LIFTING, SS-30E	1	33	10053	SCREW, CAP 5/16-18 X 3/4 ZINC	3
11	10321	SCREW, CAP 1/2-20 X 1-1/4 ZINC	4	34	10801	WASHER, LOCK 5/16 ZINC	3
12	10312	WASHER, FLAT 1/2 SAE ZINC	4	35	10213	WASHER, FLAT 5/16 SAE ZINC	3
13	10045	WASHER, LOCK 1/2 ZINC	4	36	10907	SCREW, CAP 3/8-16 X 3/4 ZINC	1
14	10072	NUT, HEX 1/2-20 ZINC	4	37	10811	WASHER, LOCK 3/8 ZINC	1
15	50711E	BRACE, LIFTING BAIL, SS-30E	2	38	10025	WASHER, FLAT 3/8 SAE ZINC	1
16	10806	SCREW, CAP 5/16-18 X 1 ZINC	4	39	50704	COVER, ARBOR, SS-30	1
17	10213	WASHER, FLAT 5/16 SAE ZINC	9	40	10907	SCREW, CAP 3/8-16 X 3/4 ZINC	1
18	10801	WASHER, LOCK 5/16 ZINC	5	41	10811	WASHER, LOCK 3/8 ZINC	1
19	10054	NUT, HEX 5/16-18 ZINC	5	42	10025	WASHER, FLAT 3/8 SAE ZINC	1
20	11593	BOLT, EYE SHOULDER 5/16-18 X 1-1/8	1	43	49016	PIN, DETENT RING 1/4 X 1 E.L.	1
21	52022	BUMPER, RUBBER 1OD X 3/16ID X 7/16H	1	44	50703	GUARD, LOWER PULLEY, SS-30	1
22	40378-S1	WASHER, FENDER 1/4ID X 1-1/4OD S.S.	3	45	10055	SCREW, CAP 3/8-16 X 1 ZINC	2
23	10384	SCREW, MACHINE 10-32 X 1	1	46	10811	WASHER, LOCK 3/8 ZINC	2
				47	10025	WASHER, FLAT 3/8 SAE ZINC	2
				48	65022	PLUG, HOLE 2"	2

## ILLUSTRATION 2: LIFT GROUPING



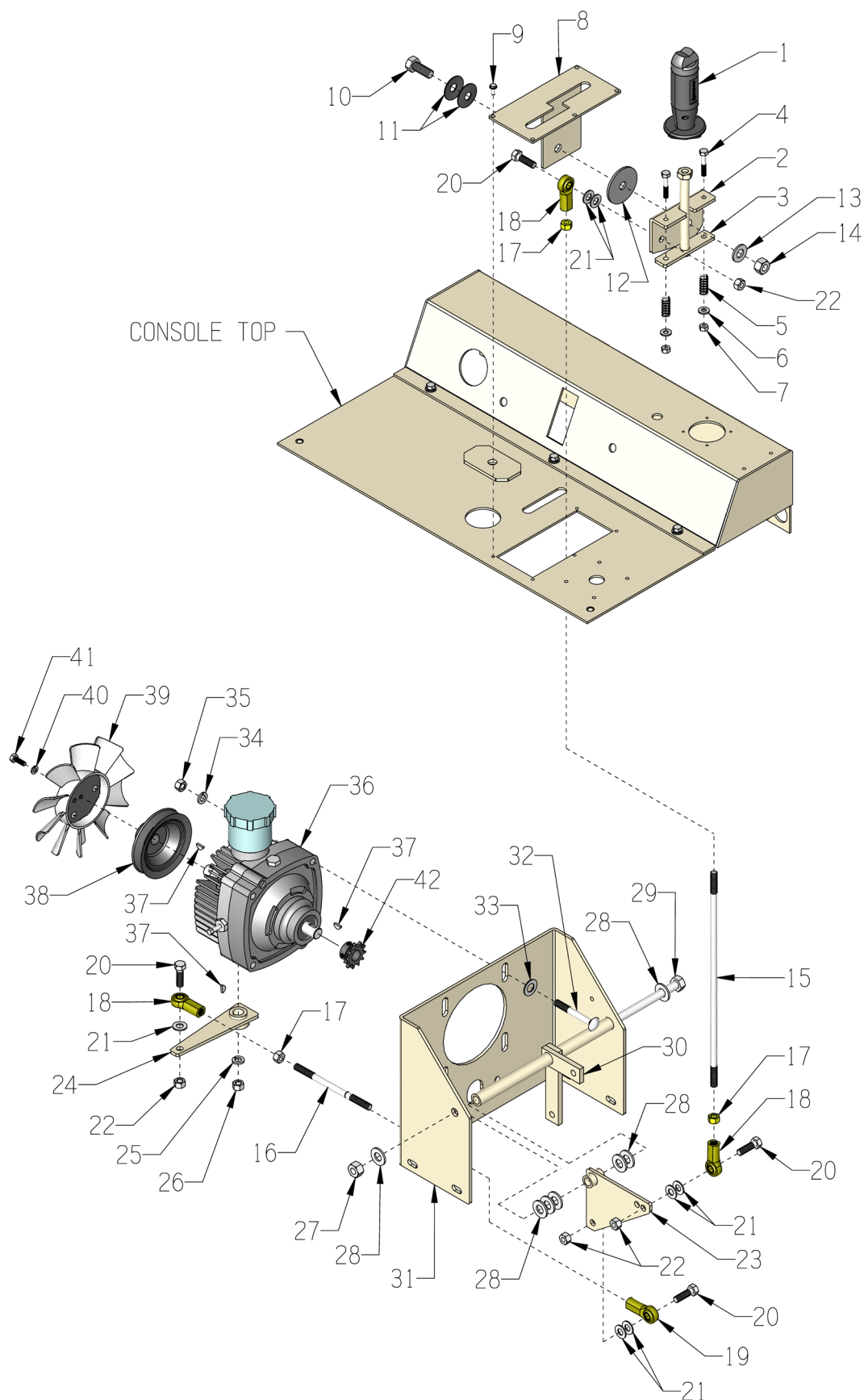
## PARTS LISTING - ILLUSTRATION 2: LIFT GROUPING

ITEM #	PART #	DESCRIPTION	QTY.	ITEM #	PART #	DESCRIPTION	QTY.
1	50620	PUMP, HYDRAULIC ELEC., 12VDC M-319	1	21	50502	FORK, SS-30	1
	50620-1	SOLENOID		22	50439	WHEEL 6 X 2-1/2 X 1"BRG., RED POLY	2
	50620-2	VALVE		23	10433	WASHER, BELLEVILLE 1/2ID X 3/32THK	2
	50620-12	COIL		24	10045	WASHER, LOCK 1/2 ZINC	2
	50620-42	PLUG, VENT (PLASTIC) 01143		25	10914	SCREW, CAP 1/2-13 X 1 ZINC	2
	10776	PLUG, SQUARE HEAD, 1/4 NPT		26	50222	BEARING, BALL 1" TPB	2
2	50324R	CABLE, BATTERY 4GA. X 24" (RED)	1	27	10961	FITTING, GREASE 1/4-28 X 90°	2
3	-----	NO ITEM	0	28	10868	SCREW, CAP 3/8-16 X 3-1/2 ZINC	4
4	10055	SCREW, CAP 3/8-16 X 1 ZINC	2	29	10811	WASHER, LOCK 3/8 ZINC	4
5	10811	WASHER, LOCK 3/8 ZINC	2	30	10025	WASHER, FLAT 3/8 SAE ZINC	4
6	10025	WASHER, FLAT 3/8 SAE ZINC	2	31	14023	KNOB, BALL 1-3/8 W/ 1/2-13THD	1
7	10794	FITTING, SWIVEL 90D, 3/8 X 1/4 NPT	1	32	10323	SCREW, CAP 1/2-13 X 2-1/2 ZINC	1
8	57078	HOSE, HYDRAULIC 1/4NPT X 6-1/2"LOA	1	33	57016	HANDWHEEL, SMALL W/ 1/2-13 THD.	1
9	61116	VALVE, FLOW CONTROL	2	34	10417	NUT, HEX 1/2-13 ZINC	3
10	10717	NIPPLE, HEX 1/4 NPT (BRASS)	1	35	10426	WASHER, BELLEVILLE 1/2ID X 3/64THK	2
11	50527	HOSE, HYDRAULIC 1/4NPT X 15-1/2"LOA	1	36	50526	SPACER, STEEL 1/2"ID X 1"LG	1
12	61020	CYLINDER, HYDRAULIC, SS30	1	37	50409	ROD, ALLTHREAD LINKAGE 1/2-13 X 22"	1
13	61021	SPACER, CYL.REAR 1/2"ID X 2-1/4	1	38	50412	LINKAGE LOWER TUBE, SS-30	1
14	10009	WASHER, FLAT 3/4 SAE ZINC	3	39	10127	SCREW, DRIVE 1/8 X 1/4"L	1
15	10324	SCREW, CAP 1/2-13 X 3-1/2	1	40	50455	NUT 1/2-13, SPECIAL	1
16	10312	WASHER, FLAT 1/2 SAE ZINC	1	41	10343	SCREW, CAP 1/2-20 X 2-1/2 ZINC	1
17	10045	WASHER, LOCK 1/2 ZINC	1	42	10809	NUT, HEX LOCK 5/8-11 ZINC	1
18	10417	NUT, HEX 1/2-13 ZINC	1	43	65022	PLUG, HOLE 2"	1
19	10326	SCREW, CAP 5/8-11 X 3 ZINC	1				
20	10809	NUT, HEX LOCK 5/8-11 ZINC	1				

**ILLUSTRATION 3: REAR AXLE GROUPING**

PARTS LISTING - ILLUSTRATION 3: REAR AXLE GROUPING			
ITEM #	PART #	DESCRIPTION	QTY.
1	50519	AXLE SHAFT 1"DIA. X 25"L, SS-30	1
2	10115	KEY 1/4SQ X 2	1
3	61126	SPROCKET #40B34 X 1"BORE	1
4	50222	BEARING, BALL 1" TPB	2
5	10960	FITTING, GREASE 1/4-28 X 45°	2
6	10906	RETAINING RING, EXT. 1"	2
7	10132	KEY 1/4SQ X 3	2
8	61065	WHEEL 8 X 3 X 1"BORE	2
9	10433	WASHER, BELLEVILLE 1/2ID X 3/32THK	2
10	10045	WASHER, LOCK 1/2 ZINC	2
11	10914	SCREW, CAP 1/2-13 X 1 ZINC	2
12	50511	SHIM, AXLE BEARING, SS-30	1
13	50512	SHIM, AXLE BEARING W/ ADJ.,SS-30	1
14	50510	SPACER, BEARING, SS-30	2
15	10340	BOLT, TAP 1/2-13 X 3 (FULL THREAD)	1
16	10433	WASHER, BELLEVILLE 1/2ID X 3/32THK	1
17	10312	WASHER, FLAT 1/2 SAE ZINC	1
18	10417	NUT, HEX 1/2-13 ZINC	2
19	10318	SCREW, CAP 3/8-16 X 3-3/4 ZINC	4
20	10811	WASHER, LOCK 3/8 ZINC	4
21	10025	WASHER, FLAT 3/8 SAE ZINC	4
22	50542	CHAIN #40 X 25" + CL, SS-30	1

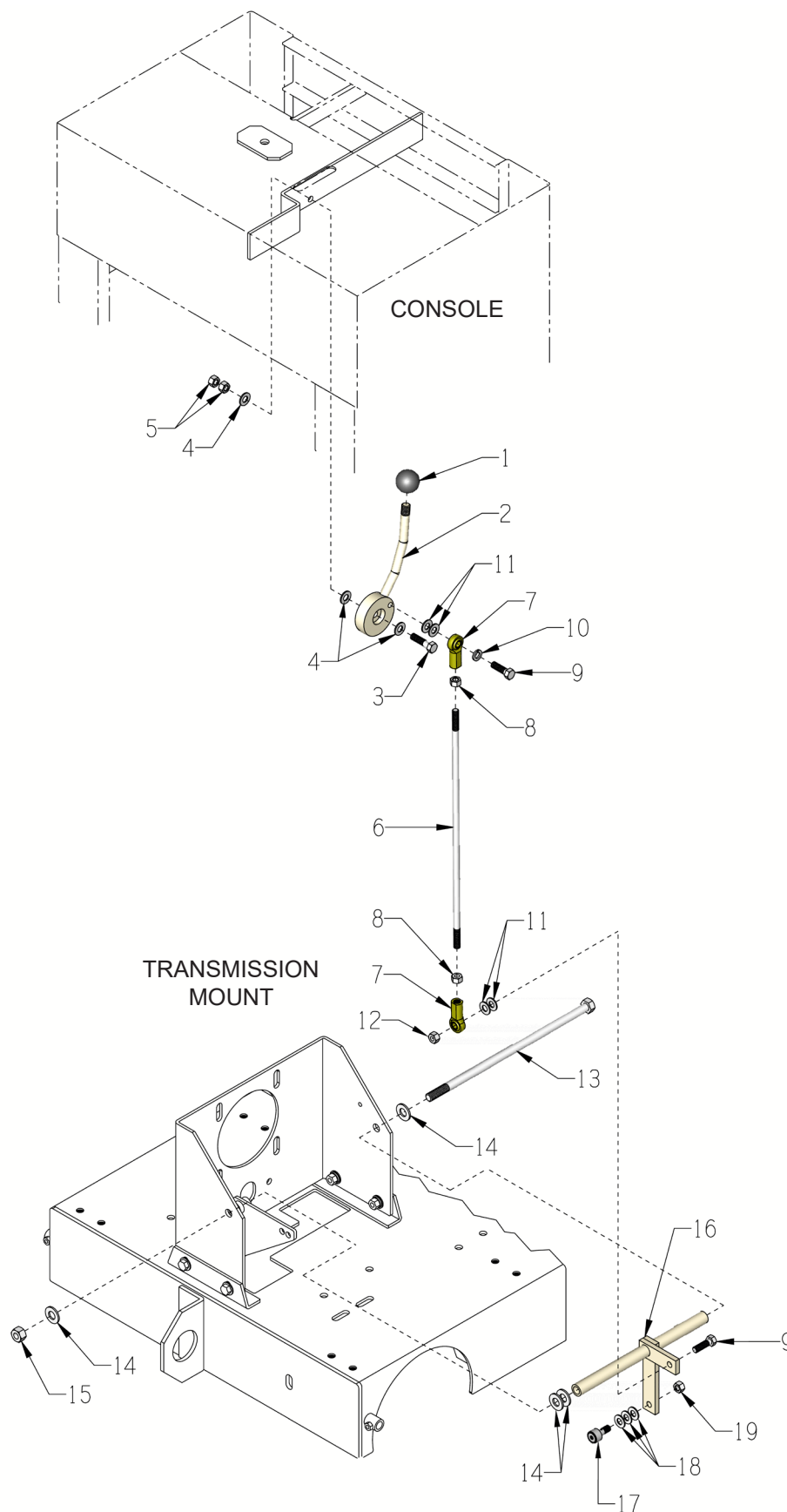
# ILLUSTRATION 4: TRANSMISSION, DRIVE LEVER & LINKAGE GROUPING





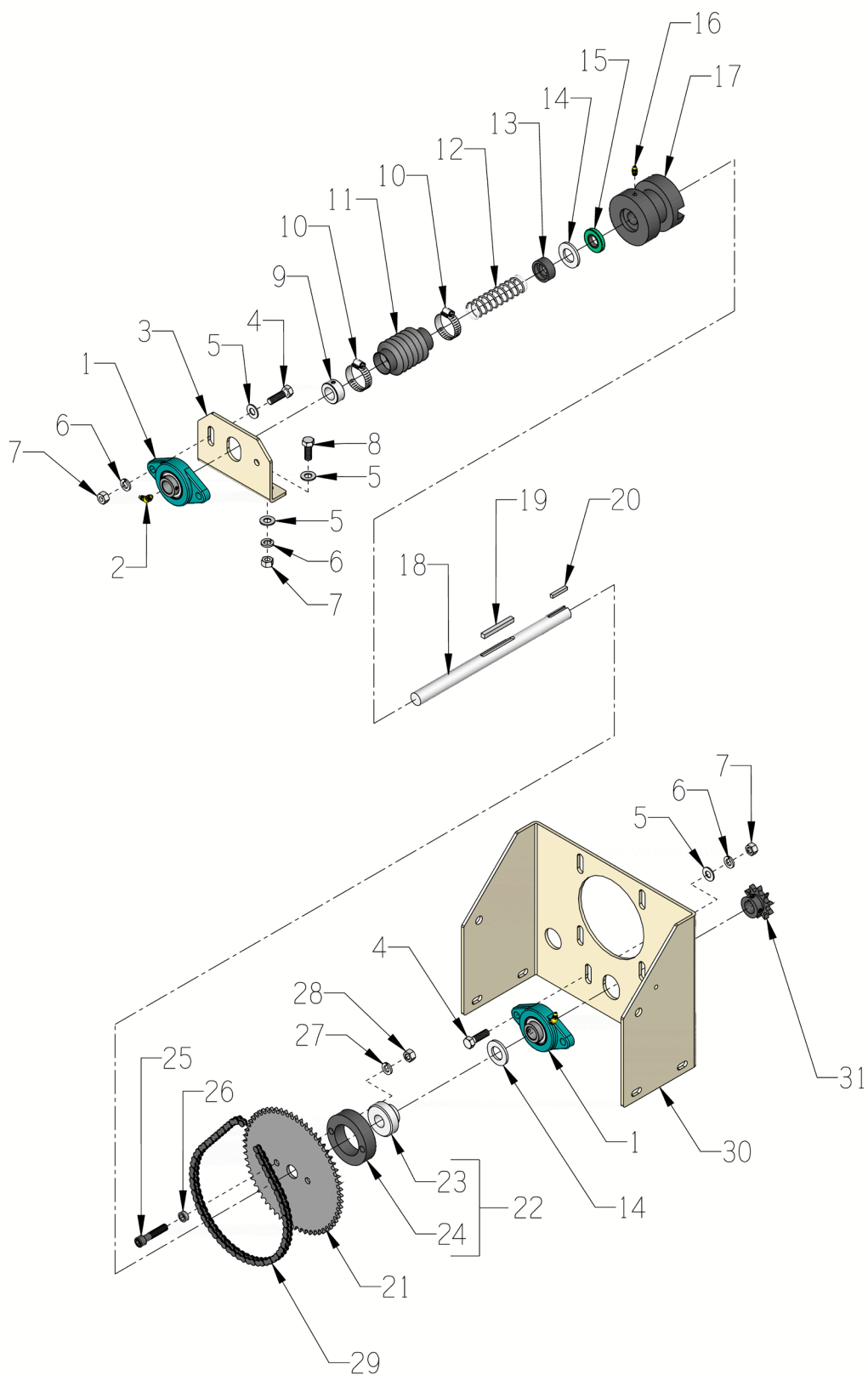
**PARTS LISTING - ILLUSTRATION 4:  
TRANSMISSION, DRIVE LEVER & LINKAGE GROUPING**

ITEM #	PART #	DESCRIPTION	QTY.	ITEM #	PART #	DESCRIPTION	QTY.
1	50610	GRIP W/ ROCKER SWITCH	1	20	10309	SCREW, CAP 3/8-24 X 1-1/4 ZINC	4
	50614A	INDIVIDUAL PARTS:	1	21	10025	WASHER, FLAT 3/8 SAE ZINC	7
	50615	ROCKER SWITCH W/ WIRES	1	22	10004	NUT, HEX LOCK 3/8-24 ZINC	4
		CAP, RUBBER BOOT	1	23	57123	BELLCRANK, DRIVE CONTROL	1
2	50613	PLATE, DRIVE LEVER	1	24	50422	TRANS. CONTROL ARM	1
		PRESSURE		25	10811	WASHER, LOCK 3/8 ZINC	1
3	50608	LEVER, DRIVE, SS-30	1	26	10404	NUT, HEX 3/8-16 ZINC	1
4	10315	SCREW, CAP 1/4-20 X 1-1/2 ZINC	2	27	10407	NUT, HEX LOCK 1/2-13 ZINC	1
5	57471	SPRING, COMP. .	2	28	10312	WASHER, FLAT 1/2 SAE ZINC	7
		468"OD X 1.25"FL		29	10421	SCREW, CAP 1/2-13 X 13 ZINC	1
6	10602	WASHER, FLAT 1/4 SAE ZINC	2	30	50450	BELL CRANK, CLUTCH, SS-30	1
7	10015	NUT, HEX LOCK 1/4-20 ZINC	2	31	50508	MOUNT, TRANSMISSION, SS-30	1
8	50607	GATE, DRIVE LEVER, SS-30	1	32	10909	BOLT, CARRIAGE 3/8-16 X 3 ZINC	4
9	10877	SCREW, CAP STSHW	5	33	10040	WASHER, GARRET	4
		10-24 X 1/2				17/32 X 1 X .054	
10	10321	SCREW, CAP 1/2-20 X 1-1/4 ZINC	1	34	10811	WASHER, LOCK 3/8 ZINC	4
11	10426	WASHER, BELLEVILLE		35	10404	NUT, HEX 3/8-16 ZINC	4
		1/2ID X 3/64THK		36	50061	TRANSMISSION, HYDROSTATIC	1
12	50428	WASHER, FIBER	1	37	50071	KEY, WOODRUFF 1/8 X 1/2 #3	3
		2-1/4OD X 1/2ID X 1/8				(404)	
13	10312	WASHER, FLAT 1/2 SAE ZINC	1	38	50062	SHEAVE, TRANS.	1
14	10205	NUT, HEX LOCK 1/2-20 ZINC	1			4"OD X 1GR. X .671"B	
15	57124	LINKAGE, ROD 3/8 X 14-5/8"L	1	39	50266	FAN BLADE W/ PLATE 7",	1
16	50420	LINKAGE, ROD 3/8 X 5-3/4"L	1			TRANSMISSION	
17	10014	NUT, HEX 3/8-24 ZINC	3	40	10038	WASHER, LOCK 1/4 ZINC	1
18	10919	ROD END, FEMALE	3	41	10018	SCREW, CAP 1/4-20 X 3/4 ZINC	1
		3/8-24 R.H. THREAD		42	50048	SPROCKET #3511 X .67"BORE	1
19	10919L	ROD END, FEMALE	1				
		3/8-24 L.H. THREAD					

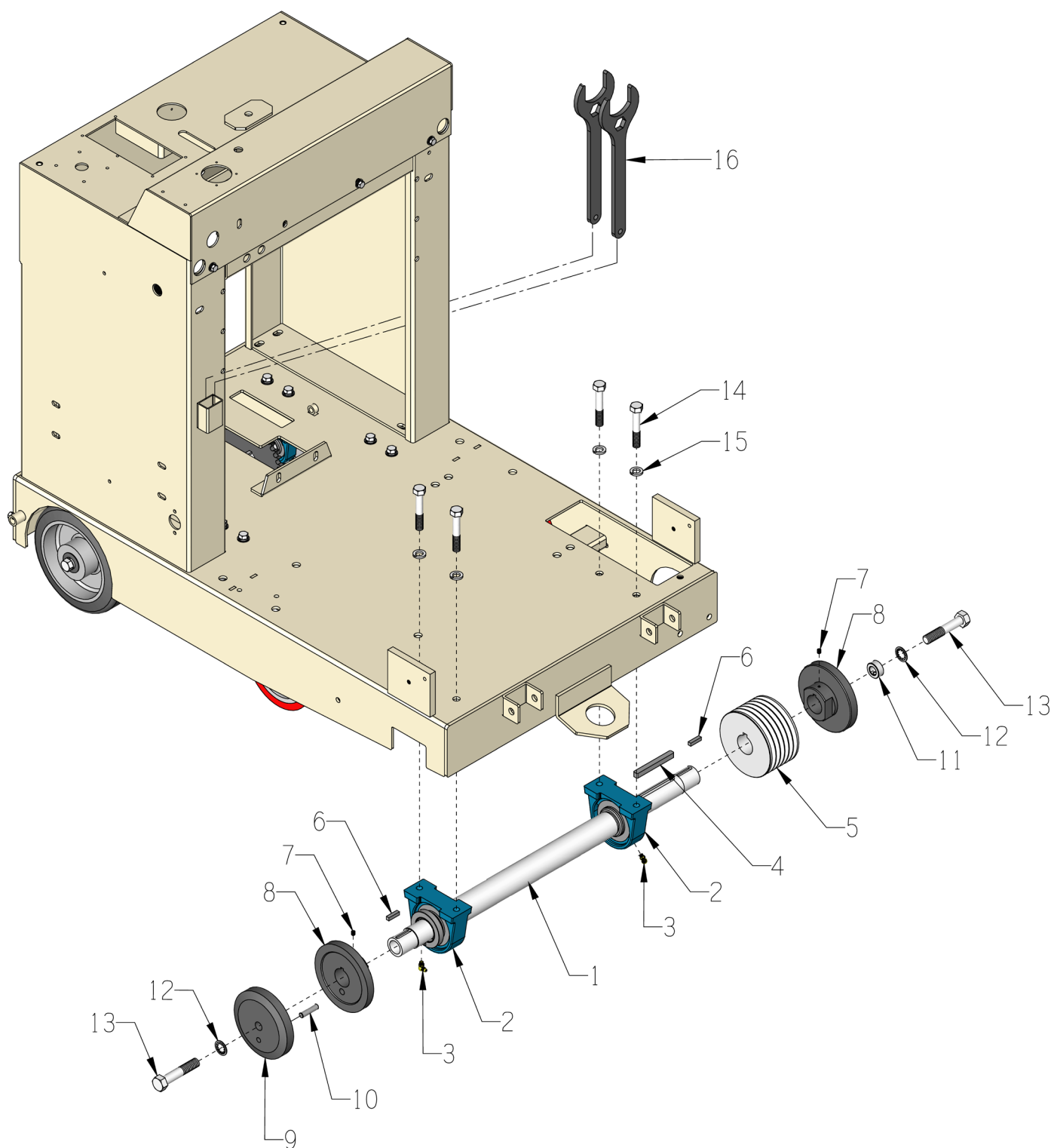
**ILLUSTRATION 5: CLUTCH LEVER & LINKAGE GROUPING**

PARTS LISTING - ILLUSTRATION 5: CLUTCH LEVER & LINKAGE GROUPING			
ITEM #	PART #	DESCRIPTION	QTY.
1	14023	KNOB, BALL 1-3/8 W/ 1/2-13THD, BLK.	1
2	50611	LEVER, CLUTCH, SS-30	1
3	10816	SCREW, CAP 3/8-24 X 1-1/2 ZINC	1
4	10025	WASHER, FLAT 3/8 SAE ZINC	3
5	10004	NUT, HEX LOCK 3/8-24 ZINC	2
6	50612	LINKAGE, ROD 3/8 X 17"L, SS-30	1
7	10919	ROD END, FEMALE 3/8-24 R.H. THREAD	2
8	10014	NUT, HEX 3/8-24 ZINC	2
9	10309	SCREW, CAP 3/8-24 X 1-1/4 ZINC	2
10	10811	WASHER, LOCK 3/8 ZINC	1
11	10025	WASHER, FLAT 3/8 SAE ZINC	4
12	10004	NUT, HEX LOCK 3/8-24 ZINC	1
13	10421	SCREW, CAP 1/2-13 X 13 ZINC	1
14	10312	WASHER, FLAT 1/2 SAE ZINC	4
15	10407	NUT, HEX LOCK 1/2-13 ZINC	1
16	50450	BELL CRANK, CLUTCH, SS-26	1
17	10924	CAM FOLLOWER BRG. 3/4" X 3/8-24THD	1
18	10025	WASHER, FLAT 3/8 SAE ZINC	3
19	10004	NUT, HEX LOCK 3/8-24 ZINC	1

# ILLUSTRATION 6: CLUTCH GROUPING



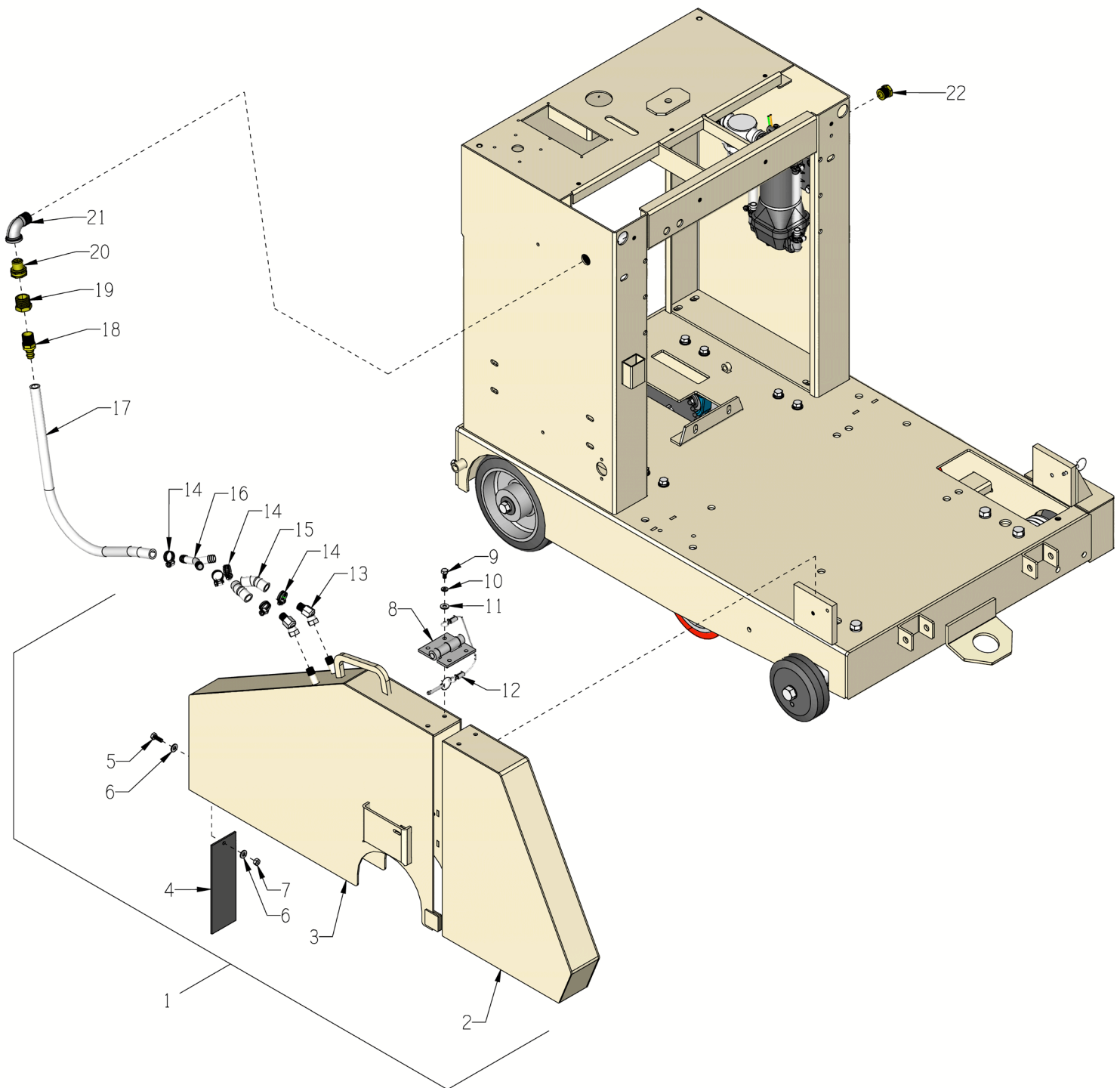
PARTS LISTING - ILLUSTRATION 6: CLUTCH GROUPING			
ITEM #	PART #	DESCRIPTION	QTY.
1	50049	BEARING, BALL 3/4" 2-HOLE FLANGE	2
2	10960	FITTING, GREASE 1/4-28 X 45°	2
3	50509	MOUNT, JACKSHAFT BEARING, SS-30	1
4	10309	SCREW, CAP 3/8-24 X 1-1/4 ZINC	2
5	10025	WASHER, FLAT 3/8 SAE ZINC	8
6	10811	WASHER, LOCK 3/8 ZINC	6
7	10014	NUT, HEX 3/8-24 ZINC	6
8	10021	SCREW, CAP 3/8-24 X 1 ZINC	2
9	10428	COLLAR, LOCKING 3/4"ID	1
10	10768	CLAMP, HOSE, SAE #12, ADJ. TO 1-1/4	2
11	10930	BELLOWS 1-1/4ID X 2-3/8EL X 1-3/4RL	1
12	10922	SPRING, COMP. 1"OD X 3.75"FL	1
13	57044	CLUTCH SPRING CUP	1
14	10009	WASHER, FLAT 3/4 SAE ZINC	2
15	3695	SEAL, OIL .750 X 1.375 X .250	1
16	10808	FITTING, GREASE 1/4-28 STRAIGHT	1
17	57042	CLUTCH, DOG BLOCK	1
18	50518	JACKSHAFT, CLUTCH 11-1/2", SS-30	1
19	10307	KEY 1/4SQ X 2-1/4	1
20	50523	KEY 3/16SQ X 1-1/8	1
21	50476	SPROCKET, CLUTCH #35A60	1
22	57038A	BEARING & CARRIER ASSY., CLUTCH	1
23	57038	BEARING, BALL 3/4ID X 1.8504"OD	1
24	57039	CARRIER, CLUTCH BEARING	1
25	10354	SCREW, SKT. HD. CAP 3/8-24 X 1-3/4	2
26	10113	SPACER, STEEL 9/16OD X 3/8ID X 7/32	2
27	10811	WASHER, LOCK 3/8 ZINC	2
28	10014	NUT, HEX 3/8-24 ZINC	2
29	64032	CHAIN #35 X 24-1/2" + CL	1
30	50508	MOUNT, TRANSMISSION, SS-30	1
31	50436	SPROCKET #40B10 X 3/4"BORE	1

**ILLUSTRATION 7: ARBOR GROUPING**

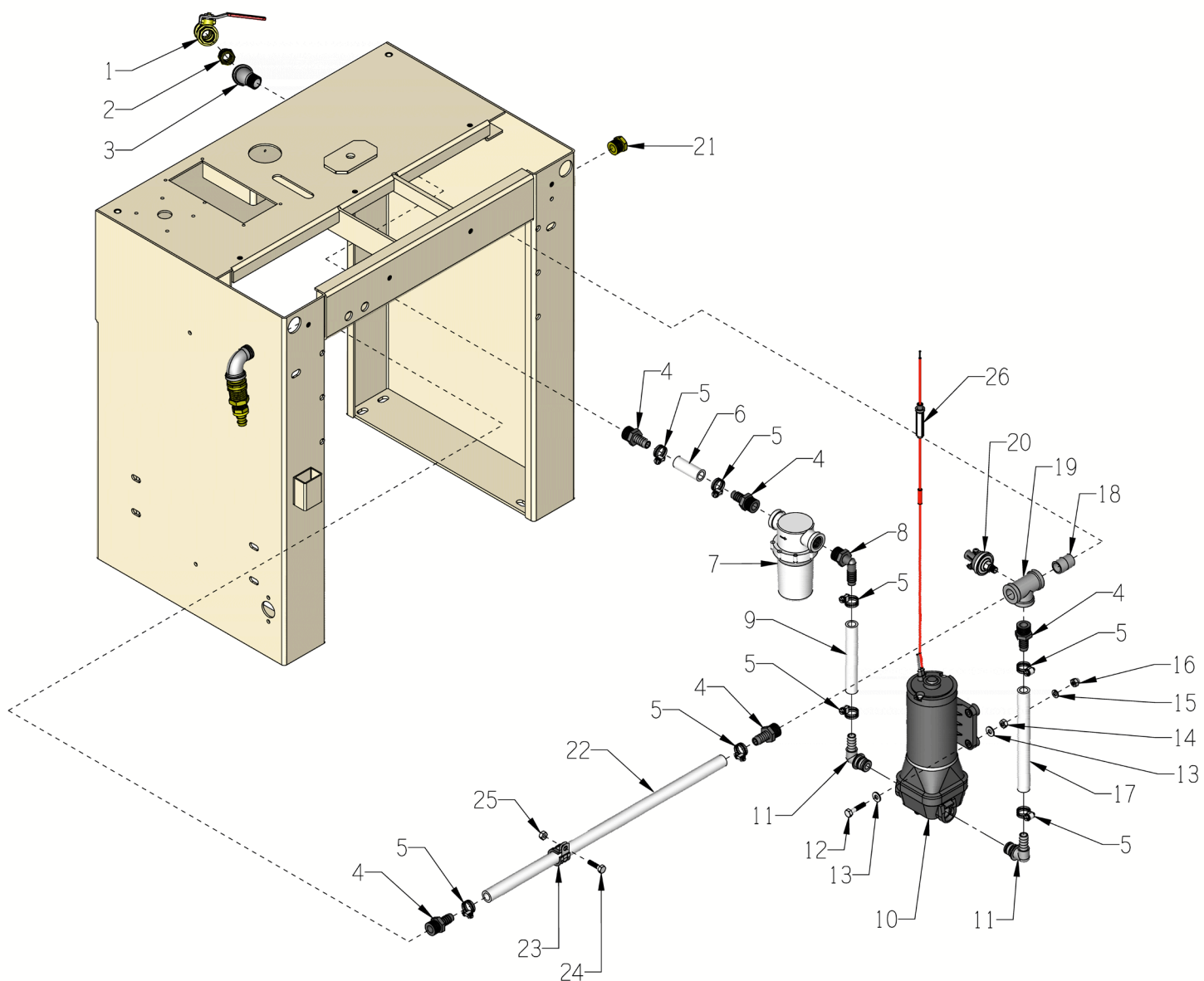


PARTS LISTING - ILLUSTRATION 7: ARBOR GROUPING			
ITEM #	PART #	DESCRIPTION	QTY.
1	50720	ARBOR SHAFT 28-1/8"L, SS-30	1
2	10111	BEARING, BALL 1-1/2" TAP PIL. BLOCK	2
3	10961	FITTING, GREASE 1/4-28 X 90°	2
4	57441	KEY 3/8SQ. X 3-3/8	1
5	10512	SHEAVE 4.80"OD X 6GR.3V X 1-7/16"B	1
6	11854	SCREW, SET 10-32 X 1/2	4
7	10174	KEY 1/4SQ X 1	2
8	10161	SCREW, SET 1/4-28 X 5/16	2
9	50734	ARBOR BACKING PLATE 6", SS-30	2
10	57405	ARBOR BLADE CAP 6", SS-30	1
11	50722	PIN, SHEAR PROOF 3/8 X 1-1/2	1
12	10096	COLLAR, LOCKING 5/8"ID (SET SCREW REMOVED)	1
13	10457	WASHER, LOCK, INT. TOOTH 5/8"	2
14	10359	SCREW, CAP 5/8-11 X 3-1/4 ZINC	2
15	10499	SCREW, CAP 1/2-13 X 3	4
16	10045	WASHER, LOCK 1/2 ZINC	4
17	57406	WRENCH, ARBOR, 2" & 15/16" COMBO	2

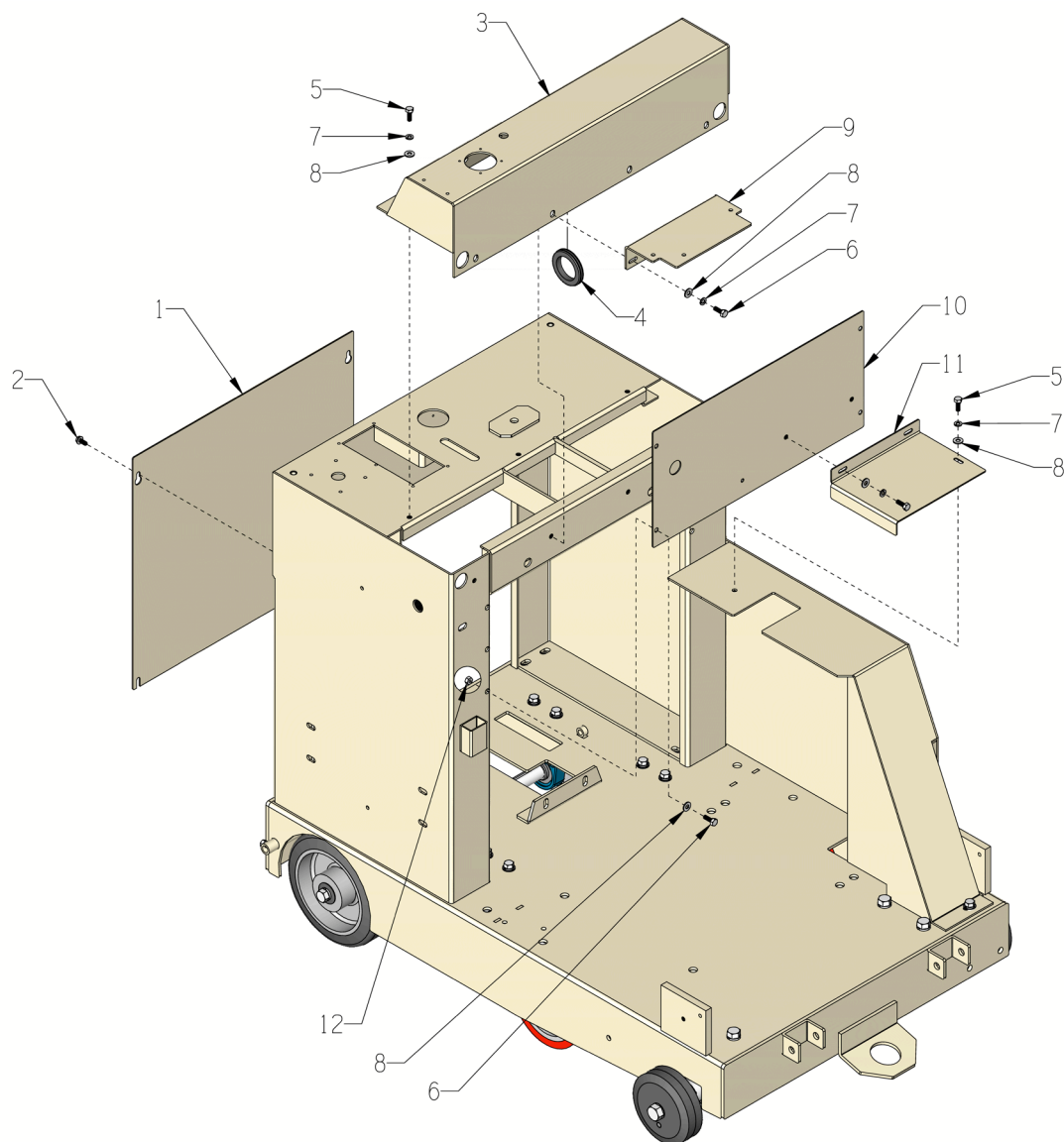
## ILLUSTRATION 8: BLADE GUARD GROUPING



PARTS LISTING - ILLUSTRATION 8: BLADE GUARD GROUPING			
ITEM #	PART #	DESCRIPTION	QTY.
1	50735A	GUARD ASSY., BLADE 30", SS-30 (INCLUDES ITEMS 2 THRU 16)	1
2	50735F	GUARD, BLADE 30", FRONT ONLY, SS-30	1
3	50735R	GUARD, BLADE 30", REAR ONLY, SS-30	1
4	41115	FLAP, RUBBER 2-1/2 X 8	1
5	10018	SCREW, CAP 1/4-20 X 3/4	1
6	10602	WASHER, FLAT 1/4 SAE ZINC	2
7	10015	NUT, HEX LOCK 1/4-20 ZINC	1
8	11617	HINGE, BUTT 3 X 3 X 7GA.	1
9	10834	SCREW, CAP 1/4-20 X 1/2 ZINC	4
10	10038	WASHER, LOCK 1/4 ZINC	4
11	10602	WASHER, FLAT 1/4 SAE ZINC	1
12	57482	PIN & CABLE, 30" BLADE GUARD	1
13	10710	FITTING, SWIVEL 45, 1/4NPT HYD.	2
14	50069	CLAMP, HOSE, SAE #6, ADJ. TO 13/16	5
15	50532	HOSE, WATER 1/2"ID X 3"L	2
16	10682	BARBED FITTING, "Y" 1/2"HOSE	1
17	57194	HOSE 1/2"ID X 18"L, SS-30	1
18	80061	BARB, PUSH-ON 1/2HOSE X 1/2MPT	1
19	10780	CONN., MALE 3/4NH X 1/2FPT (BRASS)	1
20	80021	CONN., SWIVEL FEM. 3/4HOSE X 1/2MPT	1
21	10724	ELBOW, STREET 1/2NPT X 90 (BLACK)	1
22	50552	PIPE PLUG 1/2 NPT (BRASS)	1

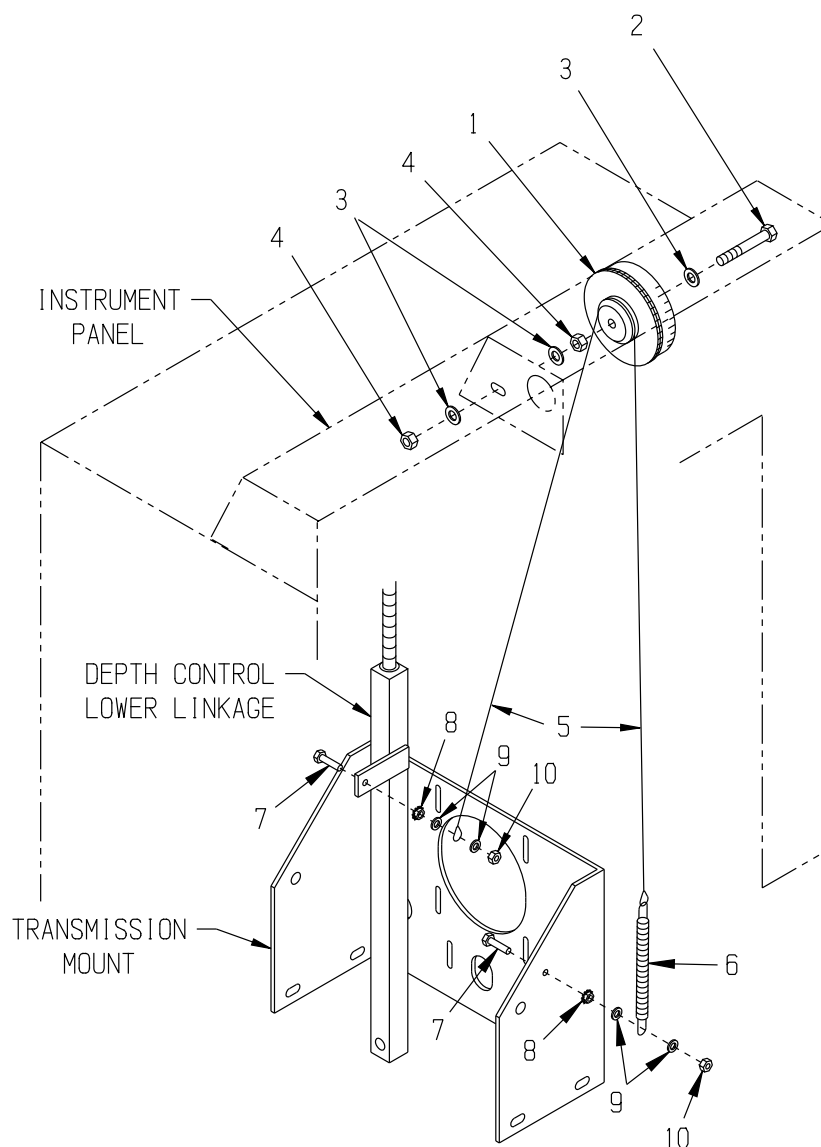
**ILLUSTRATION 9: WATER PUMP GROUPING**

<b>PARTS LISTING - ILLUSTRATION 9: WATER PUMP GROUPING</b>			
<b>ITEM #</b>	<b>PART #</b>	<b>DESCRIPTION</b>	<b>QTY.</b>
1	10711A	VALVE & HOSE CONNECTOR ASSY.	1
2	10679	NIPPLE, HEX 1/2NPT (BRASS)	1
3	10734	ELBOW, STREET 1/2NPT X 45 (BLACK)	1
4	10680	BARB, 1/2HOSE X 1/2MPT (PLASTIC)	5
5	50069	CLAMP, HOSE, SAE #6, ADJ. TO 13/16	8
6	50532	HOSE, WATER 1/2"ID X 2"L	1
7	57170	STRAINER, NYLON T-STYLE 1/2FPT	1
8	50471	BARB ELBOW 90, 1/2HOSE X 1/2MPT	1
9	57168	HOSE, WATER 1/2"ID X 5-3/4"L	1
10	50470	PUMP, WATER, 12VDC, FLOJET QUAD (INCLUDES ITEM 11)	1
11	50469	PUMP QUAD PORT BARB ELBOW 1/2" (INCLUDED W/ PUMP, ITEM 10)	2
12	10905	SCREW, CAP 1/4-20 X 1-1/4 ZINC	4
13	10602	WASHER, FLAT 1/4 SAE ZINC	8
14	10015	NUT, HEX LOCK 1/4-20 ZINC	4
15	10038	WASHER, LOCK 1/4 ZINC	4
16	10876	NUT, ACORN 1/4-20	4
17	57176	HOSE, WATER 1/2"ID X 7-5/8"L	1
18	10728	PIPE NIPPLE, CLOSE 1/2NPT (BLACK)	1
19	50525	PIPE TEE, WATER PRESS. SW. 1/2 NPT	1
20	51030	SWITCH, PRESSURE, 76061 2 N/C	1
21	50552	PIPE PLUG 1/2 NPT (BRASS)	1
22	50655	HOSE, WATER 1/2"ID X 20"L, SS-30	1
23	11565	CLAMP, LOOM, 5/8" (SAE SIZE 10) RUBBER PIECE REMOVED	1
24	10031	SCREW, CAP 1/4-20 X 1 ZINC	1
25	10861	NUT, KEPS LOCK 1/4-20 ZINC	1
26	50447	FUSE & HOLDER, 10 AMP AGC IN-LINE	1

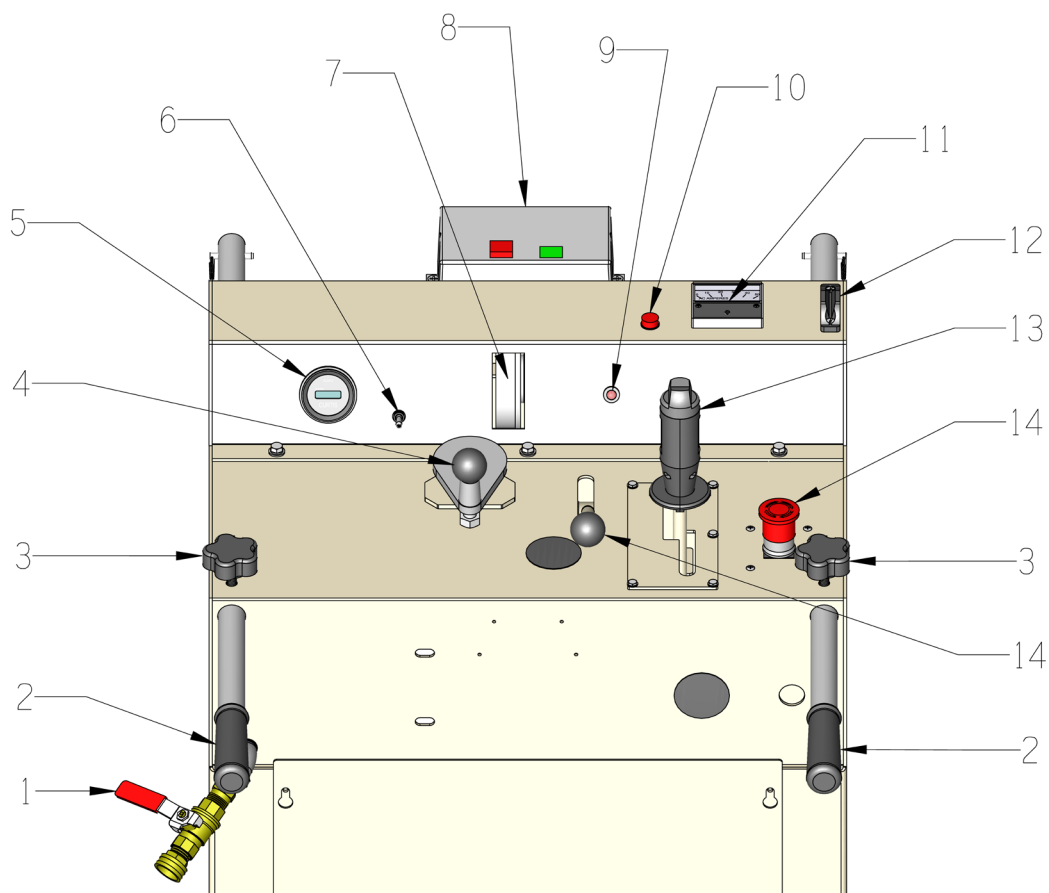
**ILLUSTRATION 10: INSTRUMENT PANEL, CONSOLE FRONT & REAR PANEL GROUPING**

ITEM #	PART #	DESCRIPTION	QTY.
1	50674	BACK PANEL, SS-30E	1
2	10846	SCREW, CAP STSHW 1/4-20 X 1/2	4
3	50651E	INSTRUMENT PANEL, SS-30E	1
4	51253	GROMMET 1-45/64ID X 1/8GRV. X 2GD	1
5	10018	SCREW, CAP 1/4-20 X 3/4 ZINC	8
6	10031	SCREW, CAP 1/4-20 X 1 ZINC	6
7	10038	WASHER, LOCK 1/4 ZINC	10
8	10602	WASHER, FLAT 1/4 SAE ZINC	14
9	50664	MOUNTING BRKT., CONTROL BOX, SS-30E	1
10	50668	CONSOLE FRONT COVER, SS-30E	1
11	50669	ALTERNATOR COVER, SS-30E	1
12	10150	NUT, HEX NYLON LOCK 1/4-20 ZINC	4



**ILLUSTRATION 11: BLADE DEPTH GAUGE GROUPING**

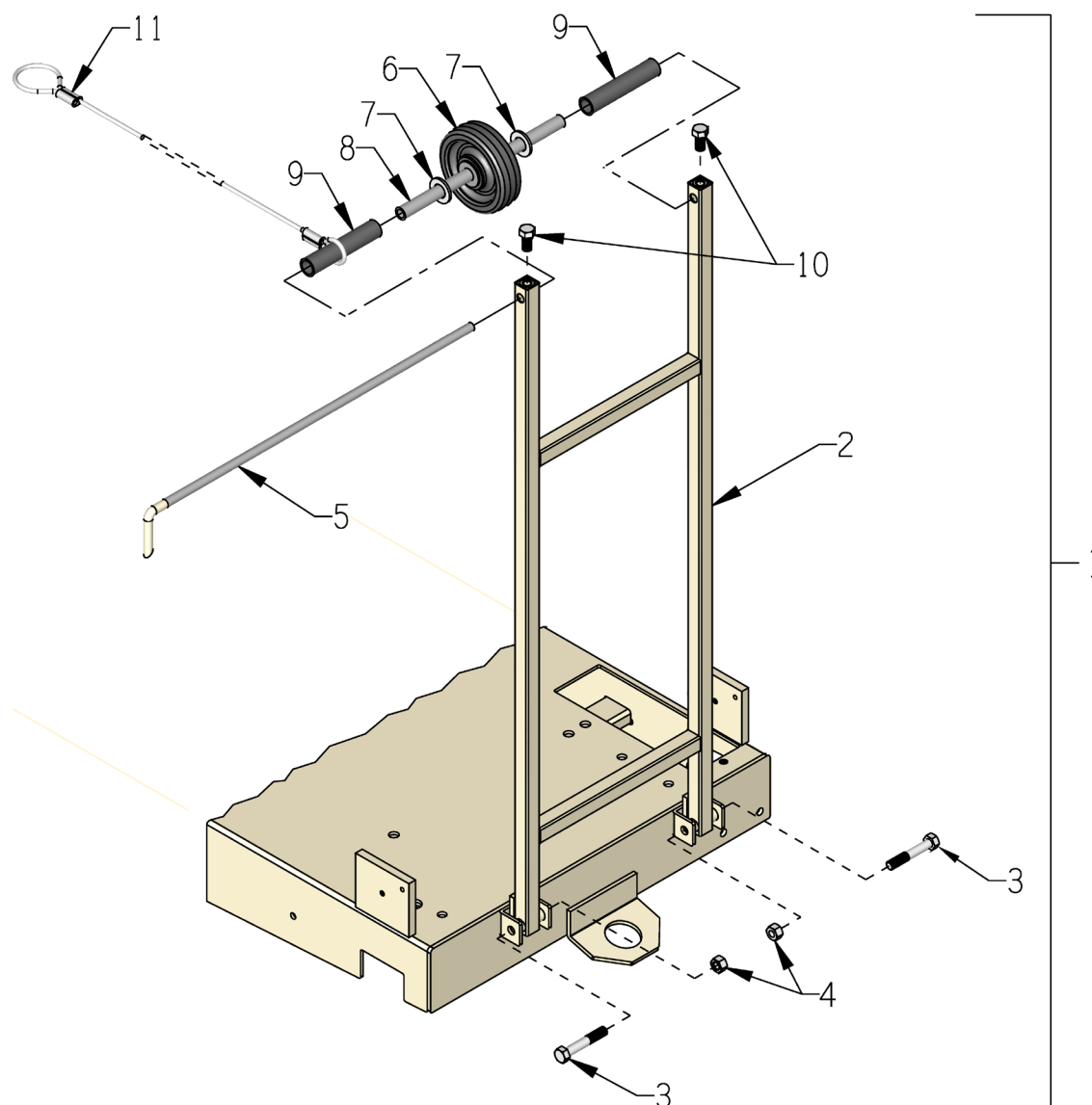
ITEM #	PART #	DESCRIPTION	QTY.
1	57132	WHEEL, DEPTH GAUGE	1
2	10336	SCREW, CAP 3/8-24 X 2-1/4 ZINC	1
3	10025	WASHER, FLAT 3/8 SAE ZINC	3
4	10004	NUT, HEX LOCK 3/8-24 ZINC	2
5	57143	CABLE, DEPTH GAUGE 3/32 X 34"L	1
6	3636	SPRING, EXT. 6"L	1
7	10031	SCREW, CAP 1/4-20 X 1 ZINC	2
8	10861	NUT, KEPS LOCK 1/4-20 ZINC	2
9	10602	WASHER, FLAT 1/4 SAE ZINC	4
10	10150	NUT, HEX NYLON LOCK 1/4-20 ZINC	2

**ILLUSTRATION 12: OPERATING CONTROLS**


ITEM #	PART #	DESCRIPTION	QTY.
1	-----	WATER HOOK-UP AND VALVE (ILLUS. 9)	1
2	-----	EXTENDABLE HANDLES (ILLUS. 1)	2
3	51230	HANDLE LOCK KNOB, STAR CLAMPING 3/8-16 X 1"STUD (ILLUS. 1)	2
4	-----	DEPTH CONTROL (ILLUS. 2)	1
5	10637	METER, HOUR 2-1/16"	1
6	10633	"WATER PUMP" SWITCH, TOGGLE SPST	1
7	-----	DEPTH INDICATOR (ILLUS. 11)	1
8	-----	ON/OFF STARTER BOX (ILLUS. 18)	1
9	10633	"BATTERY SAVER" SWITCH, TOGGLE SPST	1
10	16544	"LOW WATER PRESSURE ALERT" LAMP, 12V JUMBO RED	1
11	16543	AMMETER, AC ANALOG 0-50 AMP	1
12	11591	ROPE CLEAT, NYLON JAM 3/16"-5/16"	1
	11594	SCREW, MACHINE 10-32 X 5/8, SLT.FLT	2
	10832	NUT, KEPS LOCK 10-32 ZINC	2
13	-----	DRIVE LEVER W/ BLADE LIFT/LOWER SWITCH (ILLUS. 4)	1
14	-----	EMERGENCY STOP SWITCH (ILLUS. 18 & 19)	1
15	-----	CLUTCH CONTROL LEVER (ILLUS. 5)	1

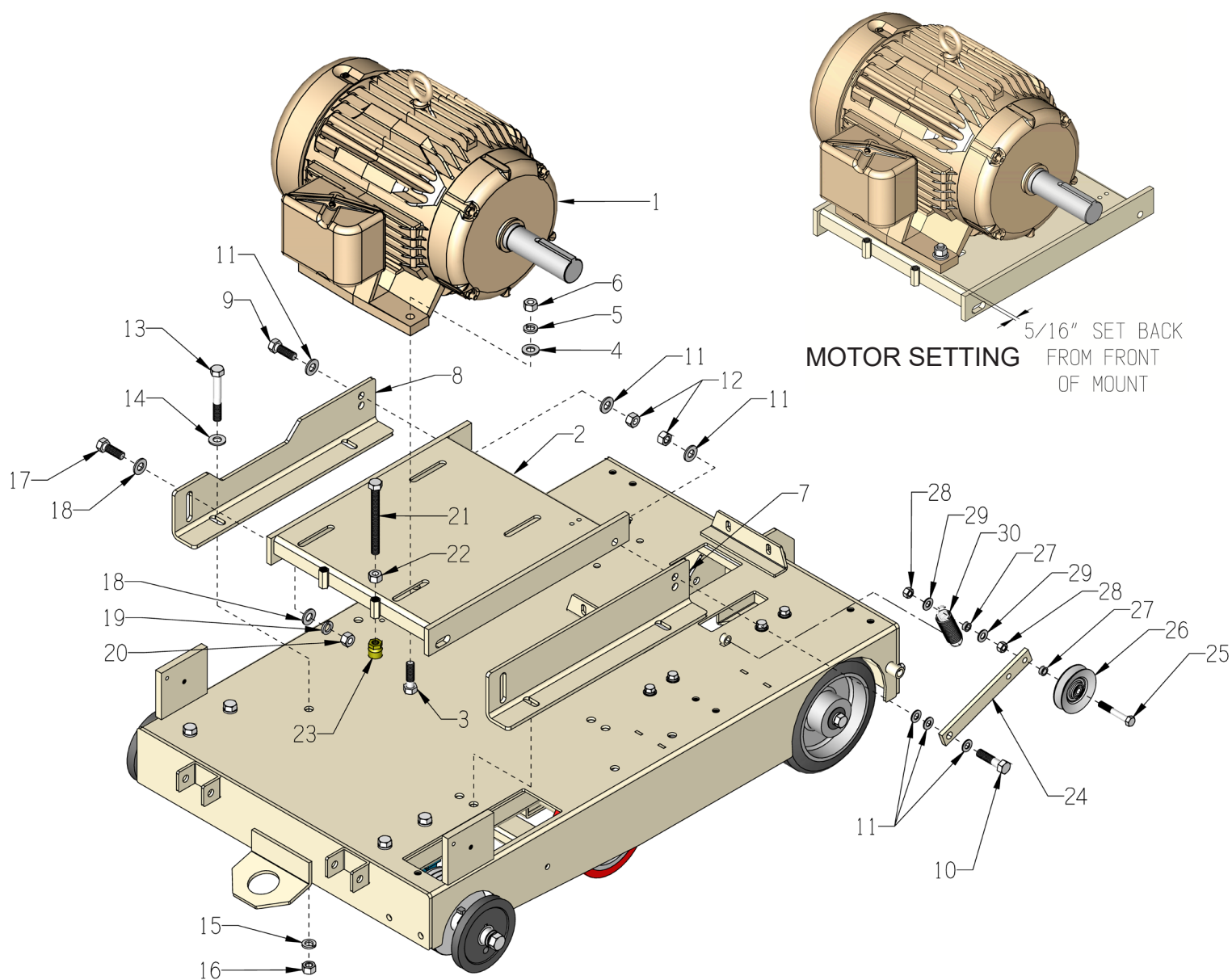
**ILLUSTRATION 13: GUIDE BAR ASSEMBLY**

PART # 57119A

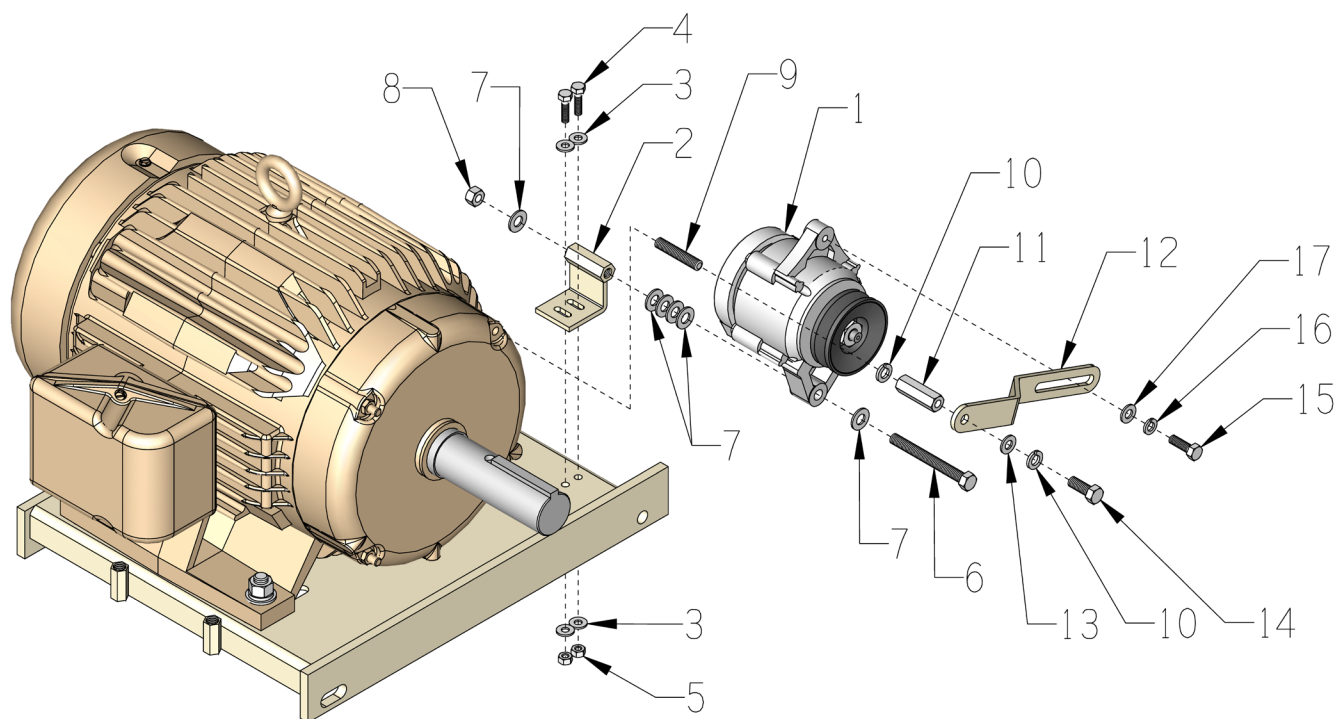


ITEM #	PART #	DESCRIPTION	QTY.
1	57119A	GUIDE BAR ASSY., SS-30 (INCLUDES ITEMS 2 THRU 11)	1
2	57119	GUIDE BAR, SS-30	1
3	10202	SCREW, CAP 1/2-20 X 3	2
4	10154	NUT, HEX NYLON LOCK 1/2-20 ZINC	2
5	50514	POINTER, FRONT 24-1/2", SS-30	1
6	50536	WHEEL 5 X 1-1/2 X 3/4"BORE	1
7	10009	WASHER, FLAT 3/4 SAE ZINC	2
8	57120	AXLE TUBE, GUIDE WHEEL, SS-30	1
9	57171	SPACER TUBE 5-1/16, GUIDE BAR WHEEL	2
10	10304	SCREW, CAP 1/2-20 X 1 ZINC	2
11	50555	ROPE, GUIDE BAR, SS-30	1

# ILLUSTRATION 14: MOTOR & MOUNT GROUPING

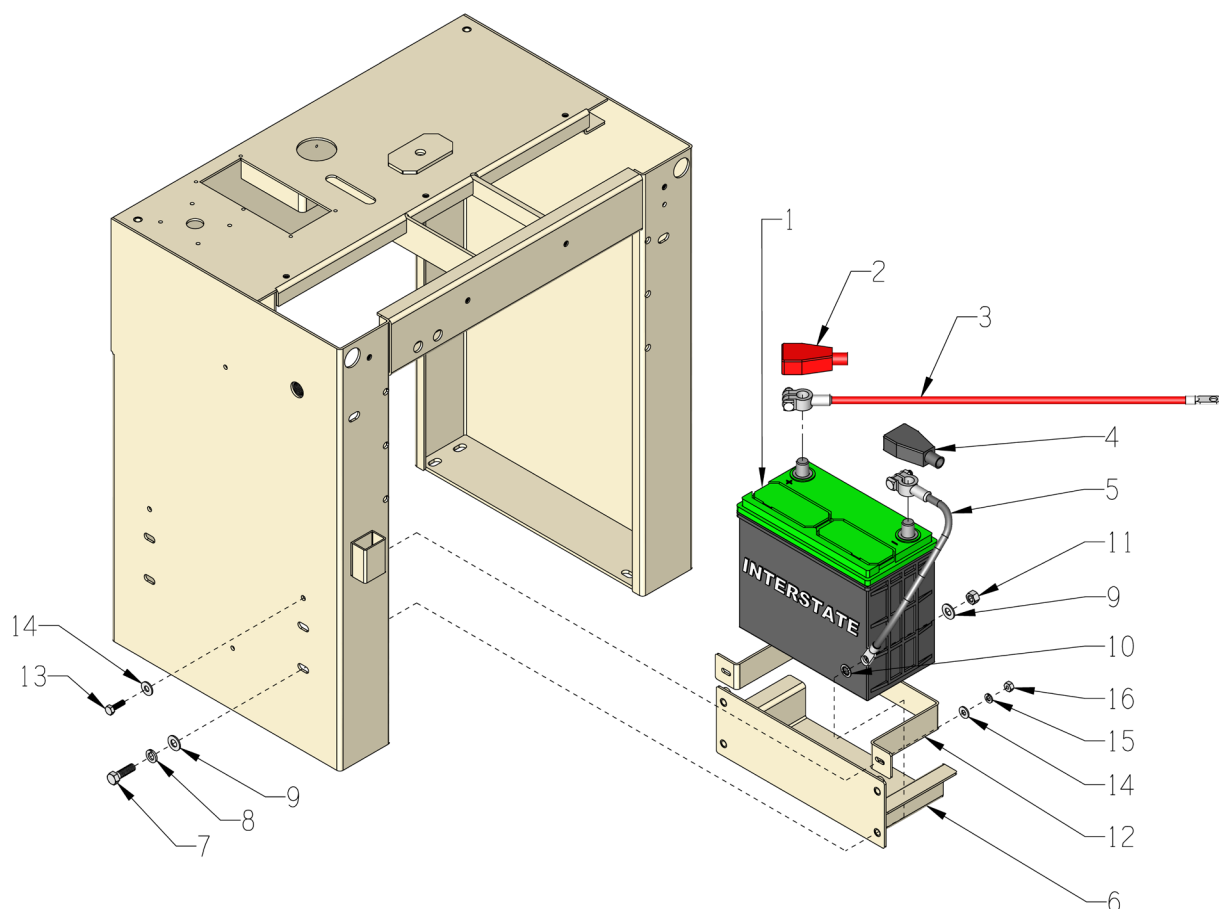


PARTS LISTING - ILLUSTRATION 14: MOTOR & MOUNT GROUPING			
ITEM #	PART #	DESCRIPTION	QTY.
1	16076 16085	MOTOR BALDOR 15HP-3PH-60HZ-1755RPM BALDOR 15HP-3PH-50HZ-1460RPM	1
2	50506E	MOUNT, MOTOR, SS-30E	1
3	10498	SCREW, CAP 1/2-20 X 1-3/4	4
4	10312	WASHER, FLAT 1/2 SAE ZINC	4
5	10045	WASHER, LOCK 1/2 ZINC	4
6	10072	NUT, HEX 1/2-20 ZINC	4
7	50507	BRACKET, ENGINE/MOTOR MOUNT, SS-30	1
8	50507E	BRACKET, MOTOR MOUNT, SS-30E	1
9	10308	SCREW, CAP 1/2-20 X 1-1/2 ZINC	1
10	10322	SCREW, CAP 1/2-20 X 2 ZINC	1
11	10312	WASHER, FLAT 1/2 SAE ZINC	6
12	10205	NUT, HEX LOCK 1/2-20 ZINC	2
13	10324	SCREW, CAP 1/2-13 X 3-1/2 ZINC	4
14	10312	WASHER, FLAT 1/2 SAE ZINC	4
15	10045	WASHER, LOCK 1/2 ZINC	4
16	10417	NUT, HEX 1/2-13 ZINC	4
17	10356	SCREW, CAP 1/2-13 X 1-1/2	2
18	10312	WASHER, FLAT 1/2 SAE ZINC	4
19	10045	WASHER, LOCK 1/2 ZINC	2
20	10417	NUT, HEX 1/2-13 ZINC	2
21	10373	BOLT, TAP 1/2-13 X 5 (FULL THREAD)	2
22	10417	NUT, HEX 1/2-13 ZINC	2
23	50710	TOGGLE PAD 7/8"D X 15/16"H X 1/2-13	2
24	50544	ARM, IDLER, SS-30	1
25	10393	SCREW, CAP 3/8-24 X 2-1/2	1
26	50115	IDLER PULLEY 3"OD X 1GR.AB X 3/8"B	1
27	10113	SPACER, STEEL 9/16OD X 3/8ID X 7/32	2
28	10004	NUT, HEX LOCK 3/8-24 ZINC	2
29	10025	WASHER, FLAT 3/8 SAE ZINC	2
30	50074	SPRING, EXT. 1"OD X 3-15/16	1

**ILLUSTRATION 15: ALTERNATOR GROUPING**


ITEM #	PART #	DESCRIPTION	QTY.
1	15260	ALTERNATOR, 12V/40A MINI ONE-WIRE	1
2	50672	ALTERNATOR BRACKET, SS-30E	1
3	10602	WASHER, FLAT 1/4 SAE ZINC	4
4	10031	SCREW, CAP 1/4-20 X 1 ZINC	2
5	10015	NUT, HEX LOCK 1/4-20 ZINC	2
6	52015	BOLT, TAP 3/8-16 X 3-1/2(FULL THD.)	1
7	10025	WASHER, FLAT 3/8 SAE ZINC (SPACE AS REQ'D.)	6
8	10810	NUT, HEX LOCK 3/8-16 ZINC	1
9	50752	ROD, ALLTHREAD 3/8-16 X 2"L	1
10	10811	WASHER, LOCK 3/8 ZINC	2
11	10447	ROD COUPLING 3/8-16 X 1-3/4	1
12	50671	ALTERNATOR TENSIONER BRKT, SS-30E	1
13	10025	WASHER, FLAT 3/8 SAE ZINC	1
14	10055	SCREW, CAP 3/8-16 X 1 ZINC	1
15	10806	SCREW, CAP 5/16-18 X 1 ZINC	1
16	10801	WASHER, LOCK 5/16 ZINC	1
17	10213	WASHER, FLAT 5/16 SAE ZINC	1

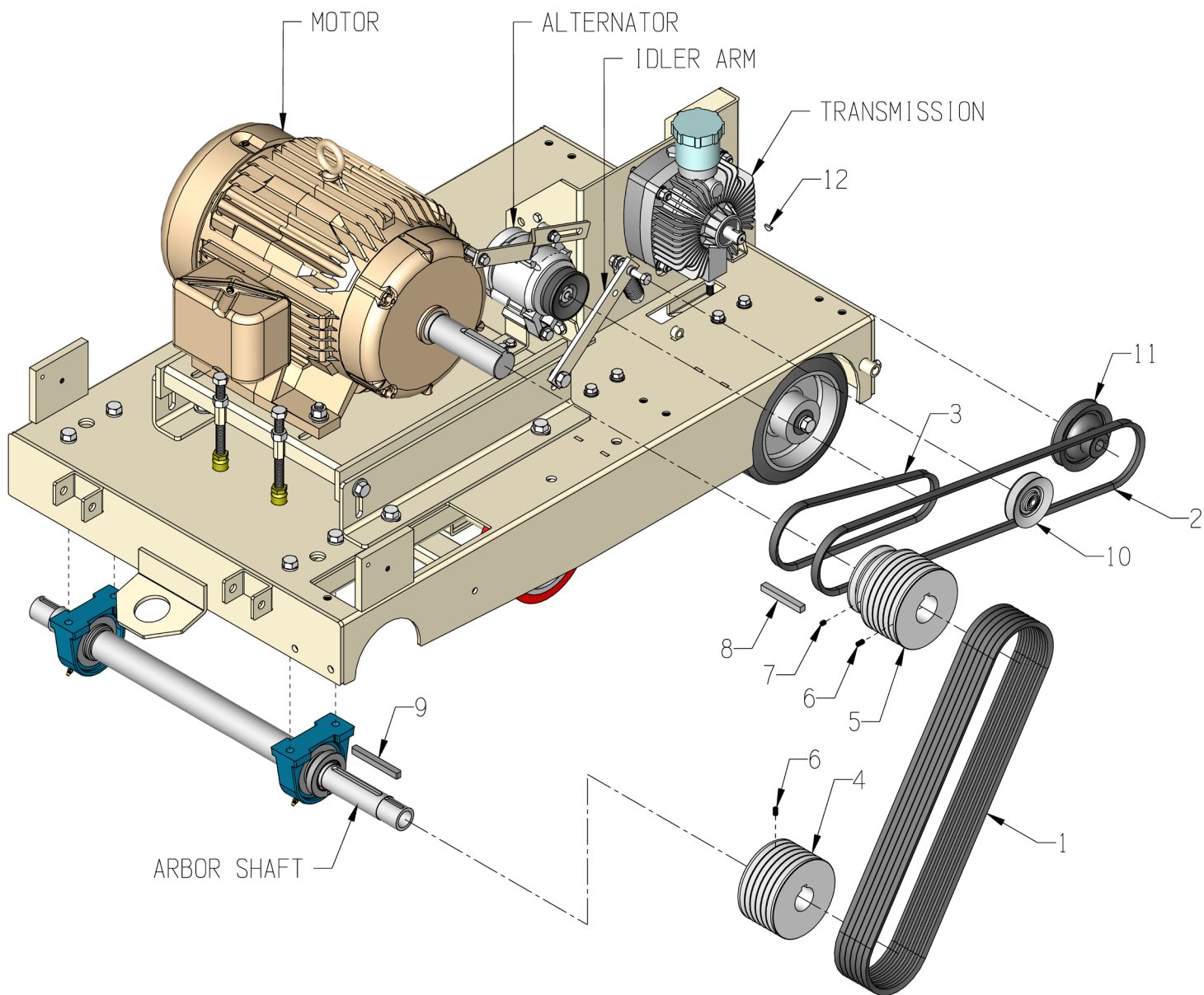
### ILLUSTRATION 16: BATTERY GROUPING



ITEM #	PART #	DESCRIPTION	QTY.
1	50321	BATTERY 12 VOLT/500 CCA(MT-51R)	1
2	10928	INSULATOR, BAT.TERM.POST (RED)	1
3	50324R	CABLE, BATTERY 4GA. X 24" (RED)	1
4	10929	INSULATOR, BAT.TERM.POST (BLACK)	1
5	50323B	CABLE, BATTERY 4GA. X 12" (BLACK)	1
6	50677	TRAY, BATTERY, SS-30	1
7	10333 10907	SCREW, CAP 3/8-16 X 1-1/4 ZINC SCREW, CAP 3/8-16 X 3/4 ZINC	1 3
8	10811	WASHER, LOCK 3/8 ZINC	4
9	10025	WASHER, FLAT 3/8 SAE ZINC	5
10	10453	WASHER, LOCK, INT. TOOTH 3/8"	1
11	10404	NUT, HEX 3/8-16 ZINC	1
12	50678	STRAP, BATTERY, SS-30	1
13	10031	SCREW, CAP 1/4-20 X 1 ZINC	2
14	10602	WASHER, FLAT 1/4 SAE ZINC	4
15	10038	WASHER, LOCK 1/4 ZINC	2
16	10015	NUT, HEX LOCK 1/4-20 ZINC	2



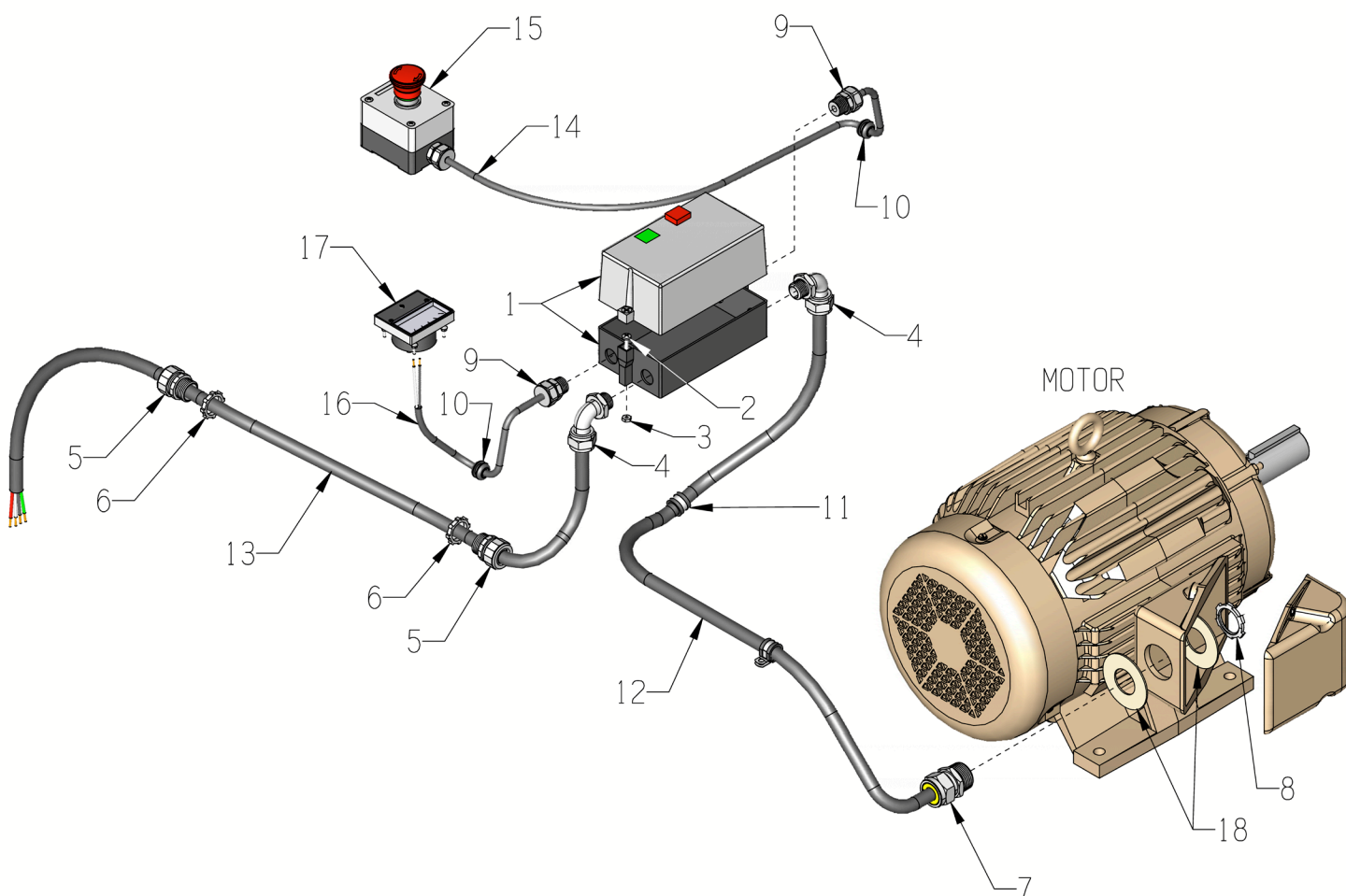
# ILLUSTRATION 17: BELT DRIVE GROUPING



PARTS LISTING - ILLUSTRATION 17: BELT DRIVE GROUPING			
ITEM #	PART #	DESCRIPTION	QTY.
1	10235	BELT 3VX-475	6
2	10284	BELT A-55	1
3	10262	BELT A-28	1
4	10512	SHEAVE 4.80"OD X 6GR.3V X 1-7/16"B (SEE ILLUS. 7 , ITEM 5)	1
5	50676	SHEAVE (50673 + 50675 WELDED) 50673 - 4"OD X 2GR.A X 1-5/8"BORE 50675 - 4.80"OD X 6GR.3V X 1-5/8"B	1
6	11854	SCREW, SET 10-32 X 1/2	8
7	10139	SCREW, SET 1/4-20 X 5/16	2
8	-----	KEY 3/8SQ X 2-7/8 (INCLUDED W/ MOTOR)	1
9	10074	KEY 3/8SQ X 3-1/2	1
10	50115	IDLER PULLEY 3"OD X 1GR.AB X 3/8"B (SEE ILLUS. 14 , ITEM 26)	1
11	50062	SHEAVE, TRANS. 4"OD X 1GR. X .671"B (SEE ILLUS. 4 , ITEM 38)	1
12	50071	KEY, WOODRUFF 1/8 X 1/2 #3 (404))	1

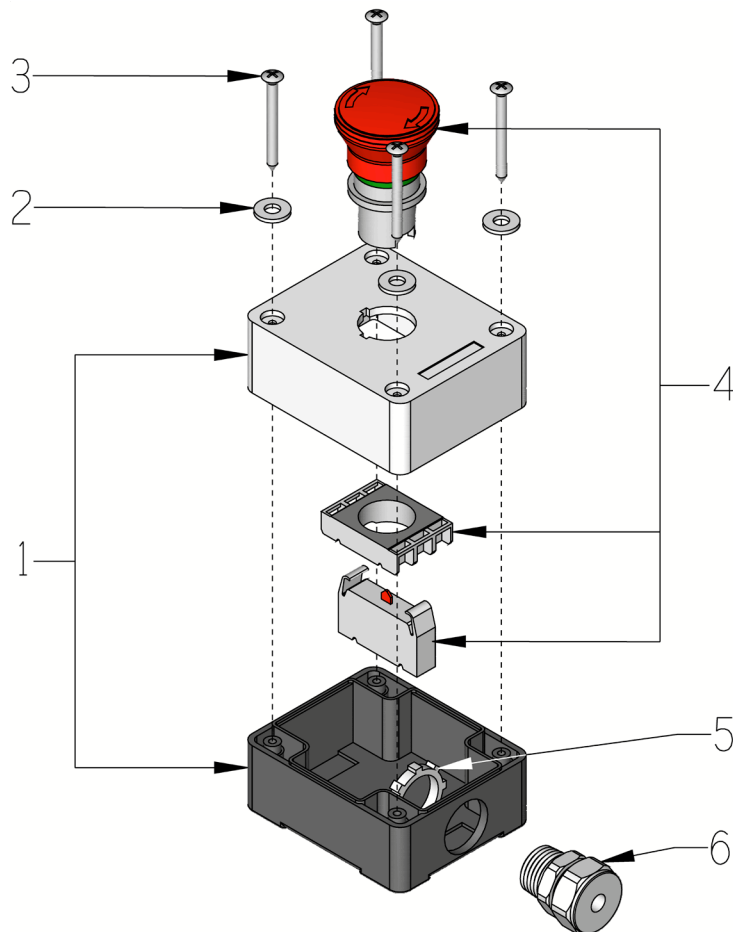
MODEL SS-30E BELT DRIVE SPECIFICATION CHART								
MOTOR	MOTOR RPM	BLADE SPEED (RPM)	BLADE DIAMETER	ENGINE SHEAVES	ARBOR SHEAVE	ARBOR BELT (6 REQ'D.)	TRANSMISSION BELT	ALTERNATOR BELT
BALDOR EGDM2333T (16076) 15HP/60Hz	1755	1755	24" - 30"	4.80"/4.0" (50676)	4.80" (10512)	3VX-475 (10235)	A-55 (10284)	A-28 (10262)
BALDOR EM2333T-58 (16085) 15HP/50Hz	1450	1450						

**ILLUSTRATION 18:  
STARTER & E-STOP SWITCH GROUPING**



**PARTS LISTING - ILLUSTRATION 18:  
STARTER & E-STOP SWITCH GROUPING**

ITEM #	PART #	DESCRIPTION	QTY.
1	16416	STARTER ACI #128863 START-STOP (SEE ILLUS. 20 FOR REPLACEMENT PARTS)	1
2	11732	SCREW, MACHINE 10-32 X 1-3/4 RHP	2
	10384	SCREW, MACHINE 10-32 X 1 RHP	1
3	10832	NUT, KEPS LOCK 10-32 ZINC	3
4	11621	STRAIN RELIEF 90D X 1/2NPT .625-.75	2
5	10605	STRAIN RELIEF 3/4NPT X .650-.750"	2
6	10740	CONDUIT LOCK NUT 3/4 NP	2
7	16172	STRAIN RELIEF 1"NPT X .625-.750"	1
8	10770	CONDUIT LOCK NUT 1" NP	1
9	16190	STRAIN RELIEF 1/2NPT X .250-.350"	2
10	57148	GROMMET 3/8ID X 1/8GRV. X 5/8GD	2
11	11565	CLAMP, LOOM, 5/8" (SAE SIZE 10)	2
12	50680	CORD, MOTOR 10/4 600V X 66"LOA	1
13	50681	CORD, POWER 10/4 600V X 54"LOA	1
14	50682	CORD, E-STOP 16/2 300V X 45"LOA	1
15	-----	E-STOP SWITCH (SEE ILLUS. 19 FOR BREAKDOWN)	1
16	50683	CORD, AMMETER 16/2 300V X 24"LOA	1
17	16543	AMMETER, AC ANALOG 0-50 AMP	1
18	50753	WASHER, JUNCTION BOX, SS-30E	2

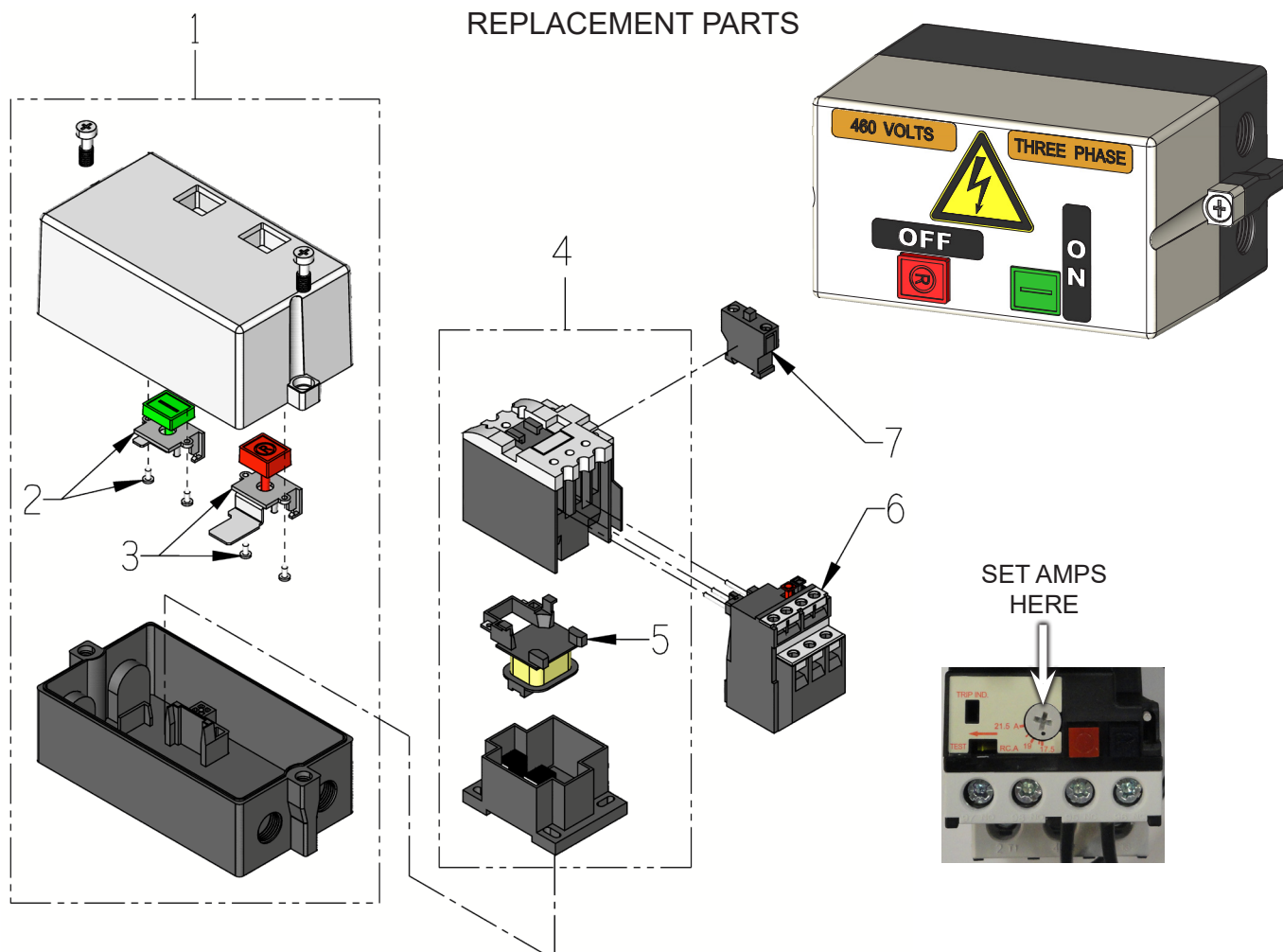
**ILLUSTRATION 19: EMERGENCY STOP SWITCH**


ITEM #	PART #	DESCRIPTION	QTY.
1	16668	ENCLOSURE, 1 HOLE ACI PBE1	1
2	10892	WASHER, FLAT #10 SS .218 X .437	4
3	-----	SCREW (INCLUDED W/ ENCLOSURE, ITEM 1)	4
4	15275-R	SWITCH, E-STOP W/ RED N.C. CONTACT	1
5	10790	CONDUIT LOCK NUT 1/2 NP	1
6	16190	STRAIN RELIEF 1/2NPT X .250-.350"	1

## ILLUSTRATION 20: ADVANCE CONTROLS, INC. (aci) BRAND START-STOP STARTER ASSEMBLY

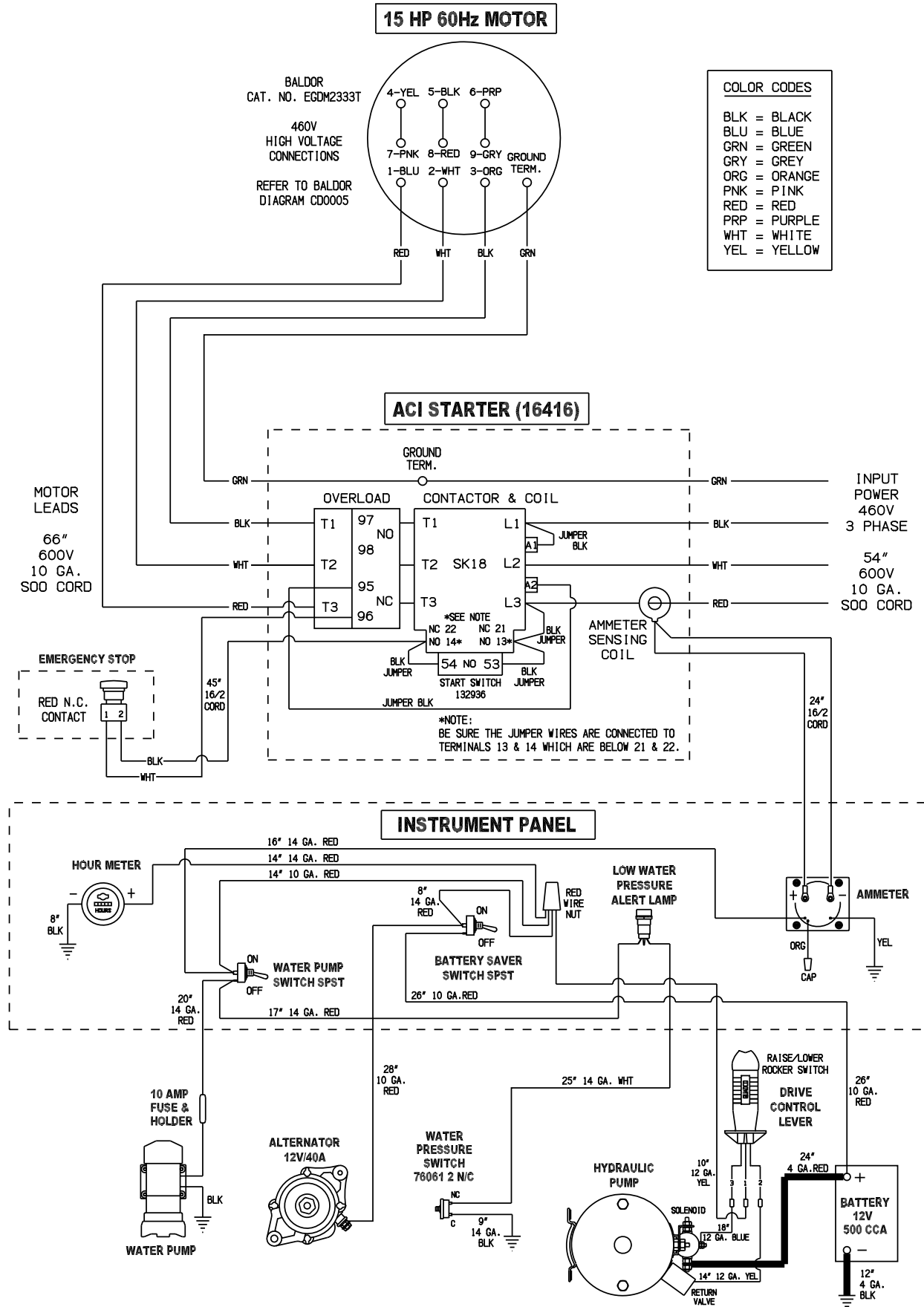
P/N 16416

### REPLACEMENT PARTS



ITEM #	PART #	DESCRIPTION	QTY.
1	16652	STARTER BOX ONLY, START-STOP (INCLUDES ITEM 2 & 3)	1
2	16656	START PUSHBUTTON ASSY., GREEN	1
3	16655	STOP/RESET PUSHBUTTON ASSY., RED	1
4	16618	STARTER CONT./COIL ACI SK18.310-460 (INCLUDES ITEM 5)	1
5	16623	STARTER AC COIL 440/480V-60HZ	1
6	16637	STARTER OVERLOAD RELAY 17.5-21.5A (460V-60Hz: SET AMPS @ 20.8)	1
7	16667	START SWITCH, SS-1, ACI #132936	1

# WIRING DIAGRAM FOR 60Hz MODEL

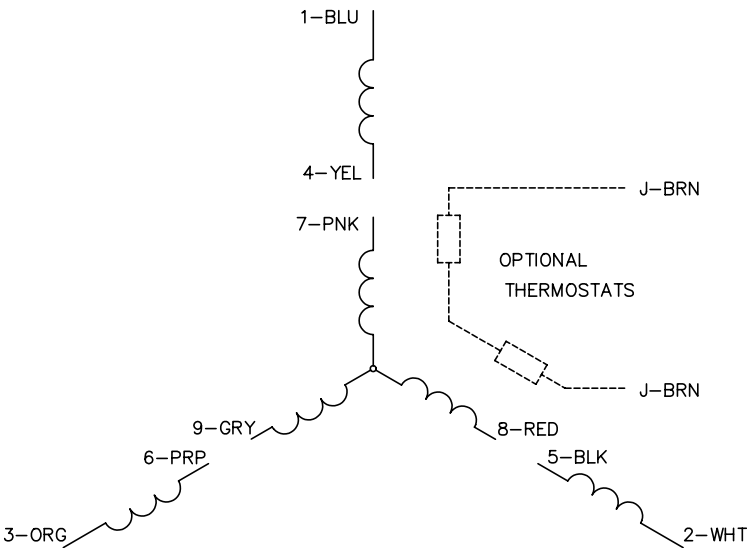




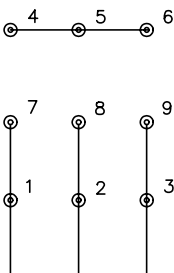
WIRING DIAGRAM FOR 60Hz MOTOR

BALDOR CAT. NO. EGDM2333T

CD0005

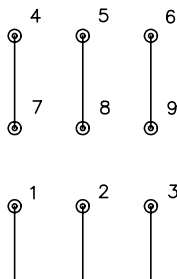


LOW VOLTAGE  
(2Y)



LINE

HIGH VOLTAGE  
(1Y)



LINE

- NOTES:
1. INTERCHANGE ANY TWO LINE LEADS TO REVERSE ROTATION.
  2. OPTIONAL THERMOSTATS ARE PROVIDED WHEN SPECIFIED.
  3. ACTUAL NUMBER OF INTERNAL PARALLEL CIRCUITS MAY BE A MULTIPLE OF THOSE SHOWN ABOVE.
  4. LEAD COLORS ARE OPTIONAL. LEADS MUST ALWAYS BE NUMBERED AS SHOWN.

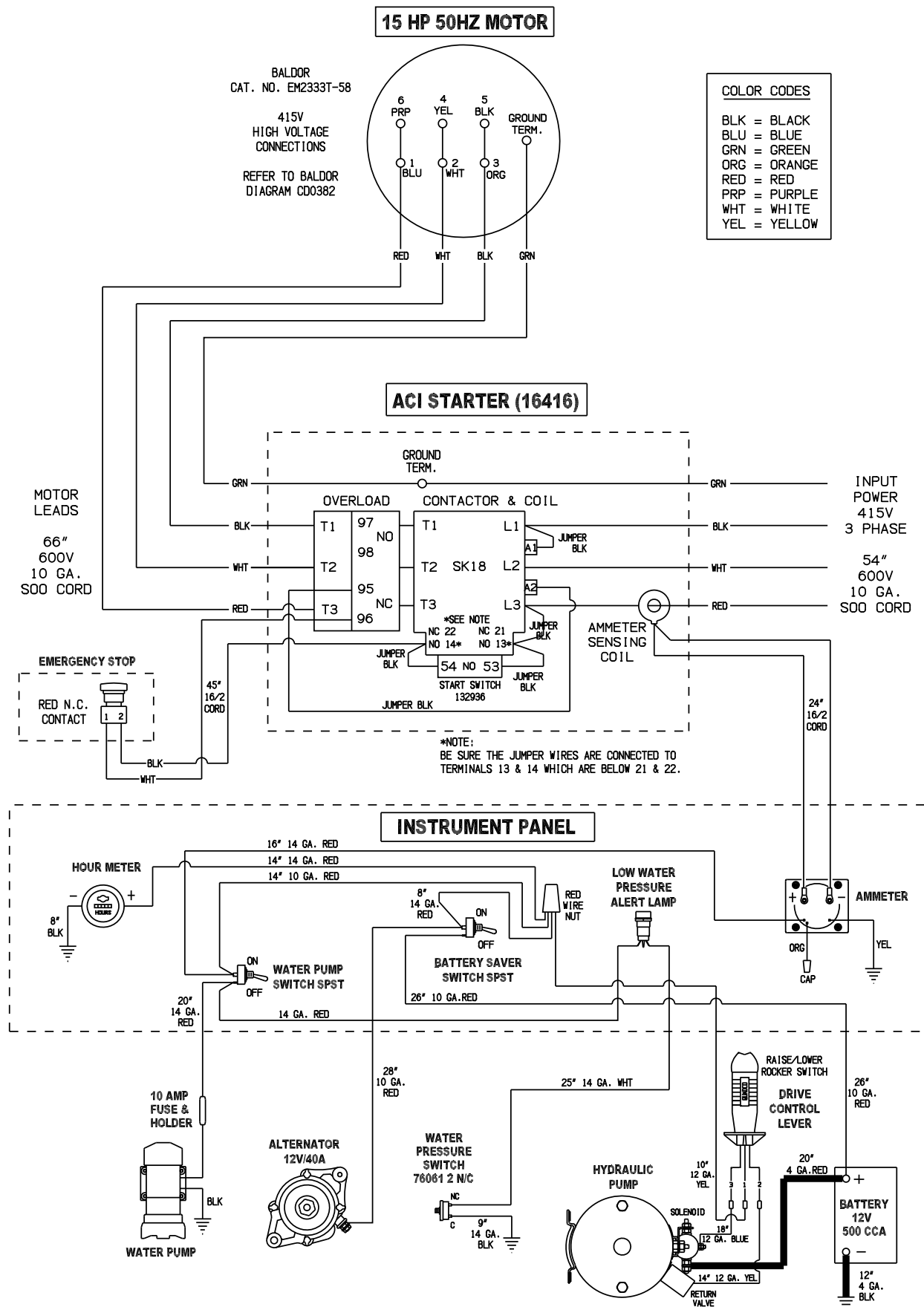
REV. DESC: REVISE TO SHOW OPTIONAL COLORS			
REV. LTR: E	BY: JLP	REVISED: 01/19/99 10:15	TDR: 0171435
CD0005		FILE: AAA00005140	MDL: -
		MTL: -	

BALDOR ELECTRIC Co.

3PH, DV, 9 LEADS

CD0005

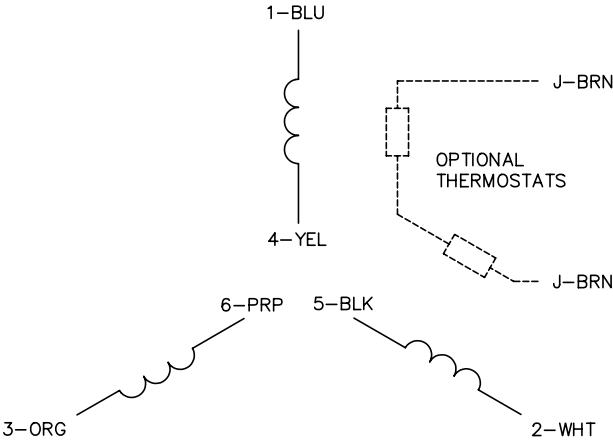
## WIRING DIAGRAM FOR 50Hz MODEL



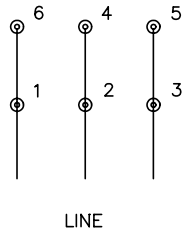
WIRING DIAGRAM FOR 50Hz MOTOR

BALDOR CAT. NO. EM2333T-58

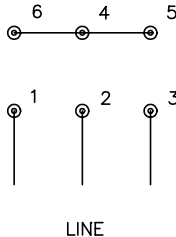
CD0382



RUN CONNECTION  
(1D)



START CONNECTION  
(1Y)



- NOTES:
- 1. INTERCHANGE ANY TWO LINE LEADS TO REVERSE ROTATION.
  - 2. OPTIONAL THERMOSTATS ARE PROVIDED WHEN SPECIFIED.
  - 3. ACTUAL NUMBER OF INTERNAL PARALLEL CIRCUITS MAY BE A MULTIPLE OF THOSE SHOWN ABOVE.
  - 4. LEAD COLORS ARE OPTIONAL. LEADS MUST ALWAYS BE NUMBERED AS SHOWN.
  - 5. FOR ACROSS-THE-LINE STARTING, USE 'RUN' CONNECTION.

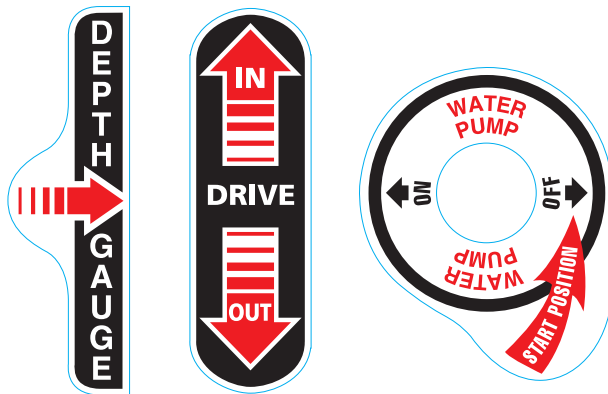
REV. DESC: ADD NOTE 5 FOR DOL STARTING			
REV. LTR: E	BY: JLP	REVISED: 11/30/00 2:26	TDR: 0226155
789000		FILE: AAA00005243	REF: -
		MTL: -	

BALDOR ELECTRIC Co.

3PH, SV, 6 LEADS, Y START/D RUN

CD0382

## DECAL SHEET P/N 92032-4



**DECAL KIT**  
Model SS-26E  
PN: 92032-4\_RevA

**LOW WATER  
PRESSURE ALERT**

**BATTERY SAVER**  
TURN OFF WHEN  
MACHINE NOT IN USE

**ADJUST CUTTING  
SPEED TO  
21 AMPS OR LESS**

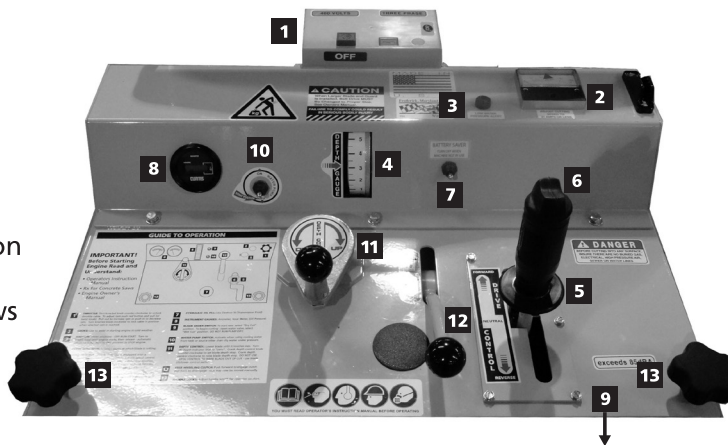


## GUIDE TO OPERATION

### IMPORTANT!

Before Starting  
Read and  
Understand:

- Operators Instruction Manual
- Rx for Concrete Saws
- Engine Owner's Manual

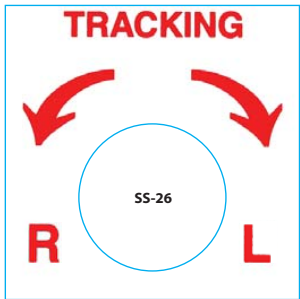


- 1 ON/OFF STARTER BOX:** Depress green button to energize motor. Depress red button to stop.
- 2 AMMETER:** Adjust forward cutting speed to 21 AMPS or less. Continued use above 21 AMPS will cause thermal overload to shut off machine.
- 3 LOWER WATER PRESSURE ALERT:** Will shut off machine to protect blade.
- 4 DEPTH INDICATOR:** Displays depth at which blade is cutting. Step cut for cuts deeper than 3".
- 5 SPEED CONTROL LEVER:** This saw is equipped with a hydrostatic transmission, which permits infinite speed control and acts as a dynamic brake when lever is in neutral position. Slowly moving lever forward causes the saw to move forward. Pulling the lever back causes the saw to move backward.
- 6 BLADE LIFT/LOWER CONTROL:** A toggle switch located on top of (5) Speed Control Lever hydraulically controls the raising and lowering of the blade.
- 7 BATTERY SAVER:** Turn on to operate machine. Turn off to protect battery.
- 8 HOUR METER:** Records amount of time machine is turned on.
- 9 TRACKING:** Saw is preset at the factory. If saw pulls left or right while cutting contact your rental agent for adjustment. See operators manual for instructions.
- 10 WATER PUMP SWITCH:** Activate when using cooling water from tank or source other than city water under pressure.
- 11 DEPTH CONTROL:** Lower blade until it touches slab. Turn (4) Depth Indicator Dial to "zero". Crank depth control knob counter-clockwise to set blade depth stop. Crank depth control clockwise to raise blade depth stop. DO NOT USE DEPTH CONTROL TO RAISE BLADE OUT OF CUT - use blade lift/lower control switch.
- 12 FREE WHEELING CLUTCH:** Push forward to engage clutch pull back to disengage - saw may now be moved manually.
- 13 HANDLE LOCKS:** Adjust handle length for operator comfort.

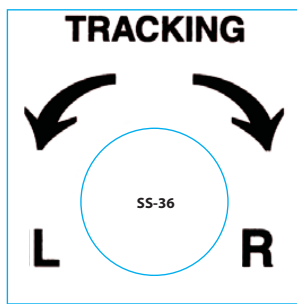
SS-26

DECAL SHEET P/N 92032-2

DECAL KIT Model SS-26 Model SS-36 PN: 92032-2 RevB



CHECK OIL DAILY

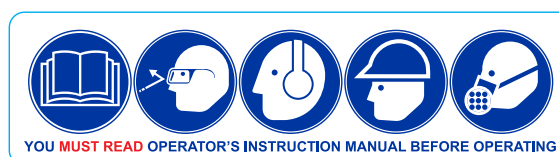
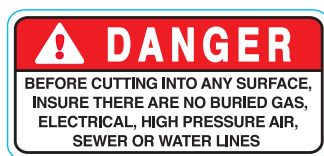


## DECAL SHEET P/N 92032-3

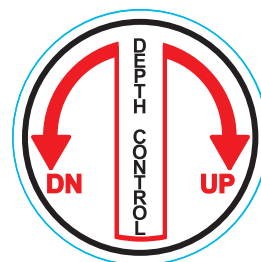
P/N 92032-3 RevD

SS-30

14x17 Sheet



exceeds 85dBA



WARNING: Cancer and Reproductive Harm.  
For more information, go to [www.P65Warnings.ca.gov](http://www.P65Warnings.ca.gov)



## LIMITED EQUIPMENT WARRANTY OF SALE

Equipment Development Company, Inc. herein referred to as EDCO (Seller) warrants that each new unit manufactured by EDCO to be free from defects in material and workmanship in normal use and service for a period of (1) one year (except for the cutter drum assembly on all model concrete/asphalt planers AND the chisel head assembly on all model ALR's & ALR-BS in which case the warranty period shall be 90 days) from date of shipment to the original retail or equipment rental center owner.

Accessories or equipment furnished and installed on the product by EDCO but manufactured by others, including, but not limited to engines, motors, electrical components, transmissions etc., shall carry the accessory manufacturers own warranty.

EDCO will, at its option, repair or replace, at the EDCO factory or at a point designated by EDCO, any part which shall appear to the satisfaction of EDCO inspection to have been defective in material or workmanship.

EDCO reserves the right to modify, alter and improve any part or parts without incurring any obligation to replace any part or parts previously sold without such modified, altered or improved part or parts.

This warranty is in lieu of and excludes all other warranties, expressed, implied, statutory, or otherwise created under applicable law including, but not limited to the warranty of merchantability and the warranty of fitness for a particular purpose in no event shall seller or the manufacturer of the product be liable for special, incidental, or consequential damages, including loss of profits, whether or not caused by or resulting from the negligence of seller and/or the manufacturer of the product unless specifically provided herein. In addition, this warranty shall not apply to any products or portions thereof of which have been subjected to abuse, misuse, improper installation, maintenance, or operation, electrical failure or abnormal conditions and to products which have been tampered with, altered, modified, repaired, reworked by anyone not approved by seller or used in any manner inconsistent with the provisions of the above or any instructions or specifications provided with or for the product.

### TERMS AND CONDITIONS

(NOT APPLICABLE TO SALES THROUGH AUTHORIZED DISTRIBUTION)

#### FORCE MAJEURE

Seller's obligation hereunder are subject to, and Seller shall not be held responsible for, any delay or failure to make delivery of all or any part of the Product due to labor difficulties, fires, casualties, accidents, acts of the elements, acts of God, transportation difficulties, delays by a common carrier, inability to obtain Product, materials or components or qualified labor sufficient to timely perform part of or all of the obligations contained in these terms and conditions, governmental regulations or actions, strikes, damage to or destruction in whole or part of manufacturing plant, riots, terrorist attacks or incidents, civil commotions, warlike conditions, flood, tidal waves, typhoon, hurricane, earthquake, lightning, explosion or any other causes, contingencies or circumstances within or without the United States not subject to the Seller's control which prevent or hinder the manufacture or delivery of the Products or make the fulfillment of these terms and conditions impracticable. In the event of the occurrence of any of the foregoing, at the option of Seller, Seller shall be excused from the performance under these Terms and Conditions, or the performance of the Seller shall be correspondingly extended.

This document sets forth the terms and conditions pursuant to which the purchaser ("Purchaser") will purchase and Equipment Development Co. Inc. ("Seller") will sell the products, accessories, attachments (collectively the Products) ordered by the Purchaser. These terms and conditions shall govern and apply to the sale of Seller's Products to Purchaser, regardless of any terms and conditions appearing on any purchase order or other forms submitted by Purchaser to Seller, or the inconsistency of any terms therein and herein.

#### 1. PRICE

All prices set forth on any purchase order or other document are F.O.B. Sellers facility or distribution point, as may be determined by Seller (F.O.B. Point). All prices are exclusive of any and all taxes, including, but not limited to, excise, sales, use, property or transportation taxes related to the sale or use of the Products, now or hereafter imposed, together with all penalties and expenses. Purchaser shall be responsible for collecting and/or paying any and all such taxes, whether or not they are stated in any invoice for the Products. Unless otherwise specified herein, all prices are exclusive of inland transportation, freight, insurance and other costs and expenses relating to the shipment of the Products from the F.O.B. point to Purchaser's facility. Any prepayment by Seller of freight insurance and other costs shall be for the account of Purchaser and shall be repaid to Seller.

#### 2. PAYMENT TERMS

Payment terms are as follows. 2% 10 days (to approved and qualified accounts). Net 30 days. This is a cash discount for invoices paid within 10 days after the invoice date, regardless of date of receipt of shipment. This is not a trade discount and will not be granted to accounts that do not adhere to stated terms.

\*All past due accounts are subject to a late payment fee of 1.5% per month or a maximum allowed by law if different, along with the expenses incidental to collection including reasonable attorney's fees and costs.

\*Seller reserves the right to hold shipments against past due accounts.

\*Seller reserves the right to alter payment terms.

#### 3. FREIGHT TERMS

All shipments will be made F.O.B. shipping point as designated in these Terms and Conditions, and title shall pass at the F.O.B. point. Delivery to the initial common carrier shall constitute delivery to the Purchaser. Any claims for loss or damage during shipment are to be filed with carrier by the Purchaser. Seller will not assume responsibility for the performance of the carrier.

Back orders will be shipped in the most practical fashion with charges consistent with our freight policy established with the original order. UPS, FED EX, MAIL or shipments by other couriers are subject to the same terms and conditions as outlined in paragraph #3 "Freight Terms".

#### 4. DELIVERY, DAMAGES, SHORTAGES

Seller shall use reasonable efforts to attempt to cause the Products to be delivered as provided for in these Terms & Conditions. Delivery to the initial common carrier shall constitute the delivery to the Purchaser. Seller's responsibility, in so far as transportation risks are concerned ceases upon the delivery of the Products in good condition to such carrier at the F.O.B. point and all the Products shall be shipped at the Purchaser's risk. Seller shall not be responsible or liable for any loss of income and/or profits, or incidental, special, consequential damages resulting from Seller's delayed performance in shipment and delivery.

#### 5. RETURN OF DEFECTIVE PRODUCTS

Defective or failed material shall be held at the Purchaser's premises until authorization has been granted by Seller to return or dispose of Products. Products that are to be returned for final inspection must be returned Freight Prepaid in the most economical way. Credit will be issued for material found to be defective upon Seller's inspection based on prices at time of purchase.

#### 6. PRODUCTS ORDERED IN ERROR

Products may be returned, provided that claim is made and Seller is notified within 7 days of receipt of Products, and the Products are in original buyer's possession not more than 30 days prior to return, subject to Seller's approval. If Products are accepted for return, they must be Freight Prepaid and buyer will be charged a minimum of 15% restocking charge, plus a charge back for outbound freight charges if the original order was shipped prepaid. Returns are not accepted for any Products that are specifically manufactured to meet the buyer's requirement of either specifications or quantity.

#### AGREEMENTS

These Terms and Conditions constitute the entire agreement between Seller and Purchaser as it relates to terms and conditions of sale, and supersedes any and all prior oral or written agreements, correspondence, quotations or understandings heretofore in force between the parties relating to the subject matter hereof. There are no agreements between Seller and Purchaser with respect to the Product herein except those specifically set forth in and made part of these terms and conditions. Any additional terms, conditions and/or prices are rejected by Seller.

These terms and conditions may be modified, cancelled or rescinded only by a written agreement of both parties executed by their duly authorized agents.

### USE ONLY GENUINE EDCO PARTS & ACCESSORIES

**For your own safety, the safety of others and the life of your machine.**

#### SUBMIT ALL WARRANTY CLAIMS AT:

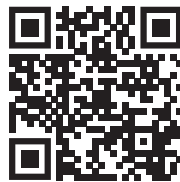
[edcoinc.com/warranty-request-claim/](http://edcoinc.com/warranty-request-claim/)





## BEFORE USING THIS PRODUCT

Have You Used EDCO's Online Customer Support??



Scan This QRC or Visit  
[www.edcoinc.com/customer-support](http://www.edcoinc.com/customer-support)



**READ:** **EDCO Owner's Manuals and Parts Listings** share basic information and parts of each product. Download and print them whenever needed.



**WATCH:** **EDCO Product Training Videos** show how to use products, install tooling, and perform basic maintenance.



*Example Only*

**FIND:** Somewhere on this product is an **EDCO QRC Training Decal**. Scanning this code provides owner's information, videos, and other training content anywhere/anytime on your mobile device.



CONCRETE KNOWLEDGE

**JOIN:** **EDCOed.com** is a free, 24-hour training space. Each certification track focuses on a specific EDCO product group. The information in these tracks help businesses be successful with those products.

EDCO is always updating online training / information so you always have the most recent content.

Also see Operator's Safety & Limited Warranty Manual

Equipment Development Co., Inc. • 800.638.3326 • [techsupport@edcoinc.com](mailto:techsupport@edcoinc.com)